



Western Michigan University
ScholarWorks at WMU

Legacy Scout Tickets from Pure Oil Company

8-20-2021

MGRRE_PureOilScoutTickets_Dusseau and Lapointe_1_21115064920000

MGRRE
Western Michigan University

Follow this and additional works at: <https://scholarworks.wmich.edu/pure>



Part of the Geology Commons

WMU ScholarWorks Citation

MGRRE, "MGRRE_PureOilScoutTickets_Dusseau and Lapointe_1_21115064920000" (2021). *Legacy Scout Tickets from Pure Oil Company*. 6048.
<https://scholarworks.wmich.edu/pure/6048>

This Document is brought to you for free and open access via ScholarWorks at WMU. It has been accepted for inclusion in Legacy Scout Tickets from Pure Oil Company by an authorized administrator of ScholarWorks at WMU. See the National Digital Catalogue - Science Base Catalogue for more collections submitted by MGRRE.



MGRRE_PureOilScoutTickets_Dusseau and Lapointe_1_21115064920000

API 21115064920000

Permit Number 6492

Lease Name Dusseau and Lapointe

Well Number 1

County Monroe

Township 06S

Range 06E

Section 19

2021 DEQ or Pure co_name Abele, Joseph

Pure Number 49

Latitude 41.94516

Longitude -83.76368

DATE April 16, 1941

THE PURE OIL COMPANY

LOCATION REPORT

Date December 2, 1944

A.F.E. No. _____

Division Mich. Producing District _____ Lease Dusseau & LaPointeAcres _____ Lease No. _____ Elevation _____ Well No. 1 (Serial No. 49)Quadrangle SW SE NW Sec. 19 Twp. 6 S Rge. 6 E ^{XBR.}_{XDist.} Twp. DundeeSurvey _____ County Monroe State MichiganOperator Joseph Abele Map Dundee Township, Monroe County

Feet from North Line of Lease

" " East " " "

" " South " " "

" " West " " "

Feet from North Line of Section

" " East " " "

" " South " " "

" " West " " "

LEGEND

○ Location



Gas Well



Oil Well



Gas - Distillate Well



Dry Hole



Dry Showing Oil



Dry Showing Gas



Abandoned Location



Abandoned Gas Well



Abandoned Oil Well



Input Well

Plugged and abandoned 10-23-44.

Total Depth 2162'.

N

Remarks: _____ Scale _____

Submitted by _____ Civil Engineer Approved by _____ Division Manager

Approved by _____ Vice-President - General Manager

STATE Michigan COUNTY Monroe DIST. Dundee TWP. Dundee SEC. 19 TOWN 6 S RANGE 6 E
WELL No. 1 (SERIAL No. 49) FARM Dussseau and LaPointe ACRES _____

NAME OF STREAM OR WATERS _____ QUADRANGLE SW SE NW SE - NW

OPERATOR Joseph Abele Map Dundee Township, Monroe County
Joseph Abele Dundee Monroe

Feet from North Line of Farm

" " East " " "
" " South " " "
" " West " " "

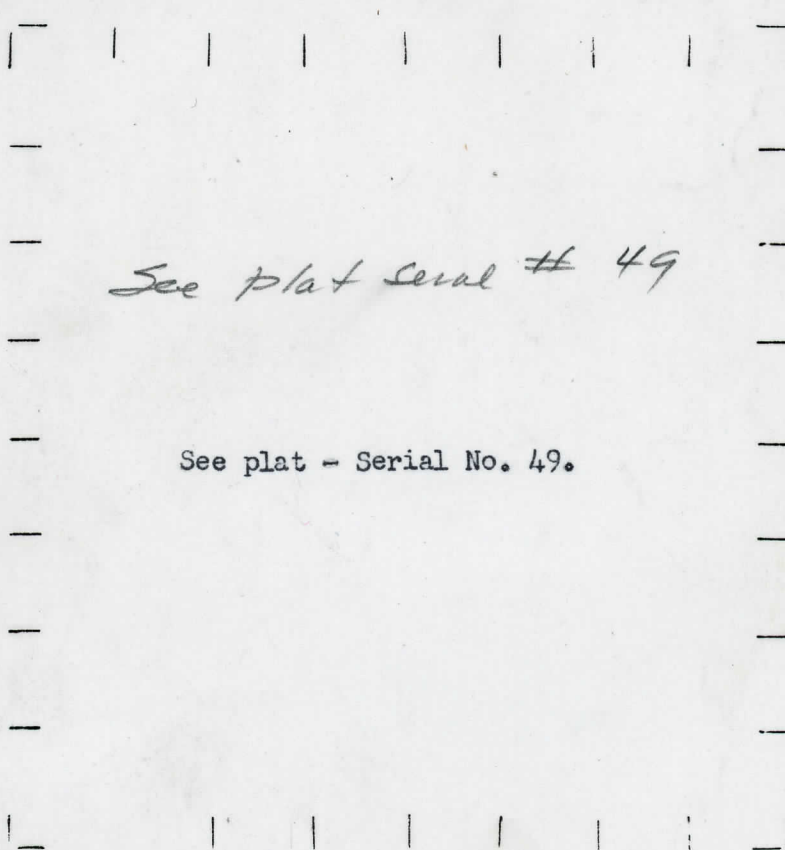
Feet from North Line of Section

" " East " " "
" " South " " "
" " West " " "

LEGEND

- | | |
|------------------|----------------------|
| ○ LOCATION | ⊙ DRY HOLE |
| ⊕ RIG | ◆ DRY SHOWING OIL |
| ⊕ DRILLING | ⊙ DRY SHOWING GAS |
| ☀ GAS WELL | ⊙ ABANDONED LOCATION |
| ● OIL WELL | ☀ ABANDONED GAS WELL |
| ◆ SMALL OIL WELL | ● ABANDONED OIL WELL |

NOTE: Below make tracing from map, (when no map is obtainable make sketch) showing farm, center of section, this location with measurements and also wells, dry holes, or other locations in the vicinity of this location.



REMARKS: Change of operator

SIGNED

W
Superintendent or Foreman.

OBSERVER Joseph Vreje
NAME OF STREAM OR WATERS
WELL No. 1 (SERIAL No. 49) FARM
STATE Michigan COUNTY Dundee TWP. Dundee SEC. 19 TOWN 6 S RANGE 6 E
FREC. Dusseau & LaPointe
QUADRANGLE SW SE NW
ACRES

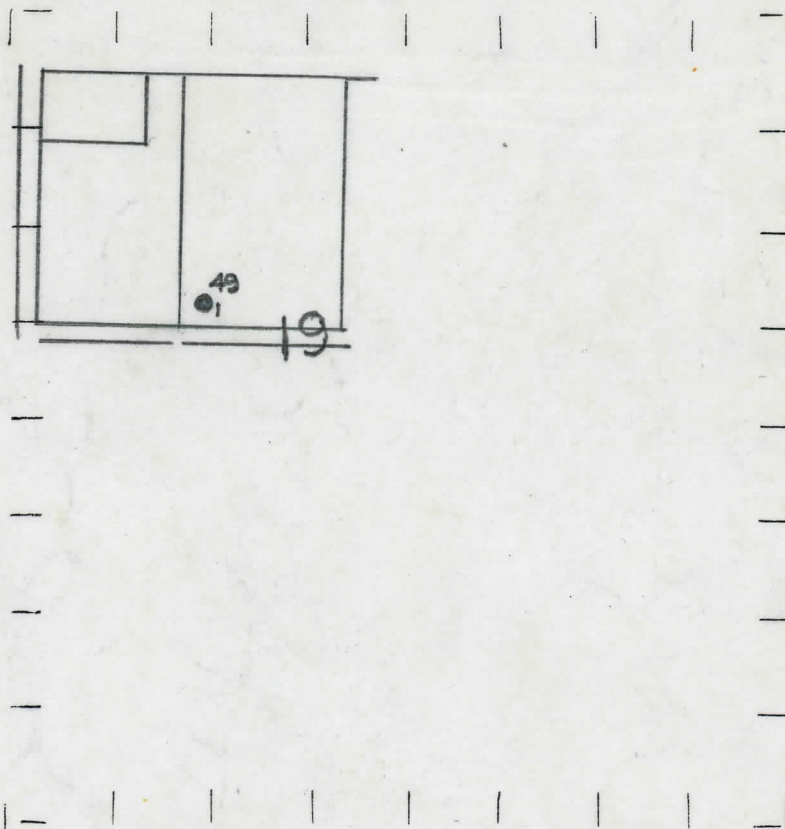
NAME OF STREAM OR WATERS
OPERATOR Bridger Basin Oil Corporation
Map Dundee Township, Monroe County
Bridger Basin Oil Corp.
Feet from North Line of Farm

25250 " " East " " "
25250 " " South " " "
25250 " " West " " "
Feet from North Line of Section
1071070 " " East " " $\frac{1}{4}$
25250 " " South " " $\frac{1}{4}$
" " West " " "

LEGEND

- | | |
|------------------|----------------------|
| ○ LOCATION | ⊙ DRY HOLE |
| ⊙ RIG | ⊙ DRY SHOWING OIL |
| ⊕ DRILLING | ⊙ DRY SHOWING GAS |
| ☀ GAS WELL | ⊙ ABANDONED LOCATION |
| ● OIL WELL | ☀ ABANDONED GAS WELL |
| ⬮ SMALL OIL WELL | ⬮ ABANDONED OIL WELL |

NOTE: Below make tracing from map, (when no map is obtainable make sketch) showing farm, center of section, this location with measurements and also wells, dry holes, or other locations in the vicinity of this location.



REMARKS:

SIGNED

Superintendent or Foreman.

OBSERVATION Big Rock Basin Oil Corporation Map Dundee Township, Monroe County
 NAME OF STREAM OR WATERS QUADREANGLE 34 2E 11N
 WELL No. 1 (SERIAL No. 49) FARM Dusseau & LaPointe ACRES
 STATE Michigan COUNTY Monroe TWP. Dundee SEC. 19 TOWN 6 S RANGE 6 E
 WELL No. 1 (SERIAL No. 49) FARM Dusseau & LaPointe ACRES

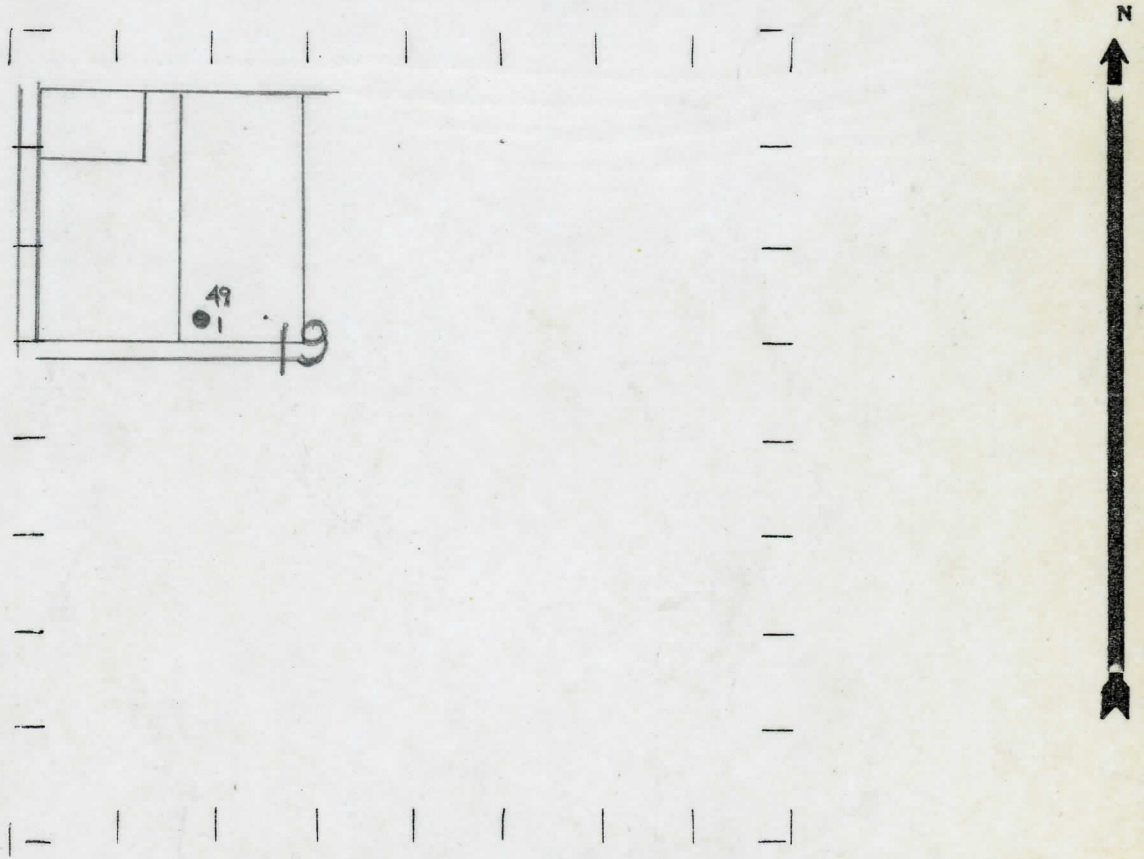
NAME OF STREAM OR WATERS _____ QUADRANGLE SW-SE-NW
 OPERATOR A. V. Oil & Gas Company Map Dundee Township, Monroe County
A. V. Oil & Gas Co. Dundee - Mon.

Feet from North Line of Farm
 " " East " " "
2250 " " South " " "
2250 " " West " " "

Feet from North Line of Section
 " " East " 1/4 "
101070 " " South " 1/4 "
25250 " " West " " "

- LEGEND**
- | | |
|------------------|----------------------|
| ○ LOCATION | ⊙ DRY HOLE |
| ⊕ RIG | ⊙ DRY SHOWING OIL |
| ⊕ DRILLING | ⊙ DRY SHOWING GAS |
| ⊙ GAS WELL | ⊙ ABANDONED LOCATION |
| ● OIL WELL | ⊙ ABANDONED GAS WELL |
| ⊙ SMALL OIL WELL | ⊙ ABANDONED OIL WELL |

NOTE: Below make tracing from map, (when no map is obtainable make sketch) showing farm, center of section, this location with measurements and also wells, dry holes, or other locations in the vicinity of this location.



REMARKS:

SIGNED _____
 Superintendent or Foreman.

STATE OF MICHIGAN DEPARTMENT OF NATURAL RESOURCES
WELL No. 1 (SERIAL No. 49) FARM
STATE MICHIGAN COUNTY Monroe DIST. Dundee TWP. Dundee SEC. 19 TOWN 6 S RANGE 6 E
WELL No. 1 (SERIAL No. 49) FARM Dussseau & LaPointe ACRES

NAME OF STREAM OR WATERS QUADRANGLE SW SE NW

OPERATOR Bridger Basin Oil Corporation Map Dundee Township, Monroe County

Bridger Basin Oil Corp

Dundee - Monroe

Feet from North Line of Farm

East " " "

25250

South " " "

25250

West " " "

Feet from North Line of Section

1070

East " 1/4 "

25250

South " 1/4 "

West " " "

LEGEND

○ LOCATION

① RIG

⊕ DRILLING

☀ GAS WELL

● OIL WELL

⦿ SMALL OIL WELL

⊖ DRY HOLE

⦿ DRY SHOWING OIL

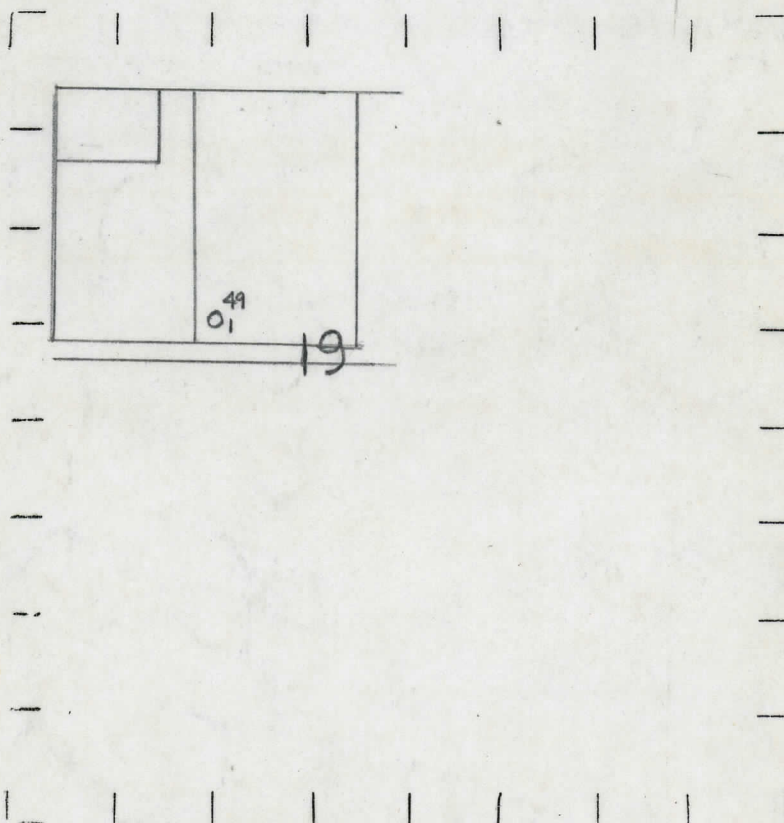
⦿ DRY SHOWING GAS

⊖ ABANDONED LOCATION

☀ ABANDONED GAS WELL

⦿ ABANDONED OIL WELL

NOTE: Below make tracing from map, (when no map is obtainable make sketch) showing farm, center of section, this location with measurements and also wells, dry holes, or other locations in the vicinity of this location.



REMARKS:

SIGNED

Superintendent or Foreman.

Signed D. C. Shackelford