



Western Michigan University
ScholarWorks at WMU

Legacy Scout Tickets from Pure Oil Company

8-20-2021

MGRRE_PureOilScoutTickets_Dusseau & Lapointe_2_21115067980000

MGRRE
Western Michigan University

Follow this and additional works at: <https://scholarworks.wmich.edu/pure>



Part of the Geology Commons

WMU ScholarWorks Citation

MGRRE, "MGRRE_PureOilScoutTickets_Dusseau & Lapointe_2_21115067980000" (2021). *Legacy Scout Tickets from Pure Oil Company*. 6053.
<https://scholarworks.wmich.edu/pure/6053>

This Document is brought to you for free and open access via ScholarWorks at WMU. It has been accepted for inclusion in Legacy Scout Tickets from Pure Oil Company by an authorized administrator of ScholarWorks at WMU. See the National Digital Catalogue - Science Base Catalogue for more collections submitted by MGRRE.



MGRRE_PureOilScoutTickets_Dusseau & Lapointe_2_21115067980000

API 21115067980000

Permit Number 6798

Lease Name Dusseau & Lapointe

Well Number 2

County Monroe

Township 06S

Range 06E

Section 19

2021 DEQ or Pure co_name Bridger Basin Oil Corporation

Pure Number 54

Latitude 41.94511

Longitude -83.76182

THE PURE OIL COMPANY

DATE February 21, 1941

LOCATION REPORT

No. 54

STATE Michigan COUNTY Monroe DIST. Dundee SEC. 19 TOWN 6 S RANGE 6 E
WELL No. 2 (SERIAL No. 54) FARM Dusseau and LaPointe ACRES

NAME OF STREAM OR WATERS _____ QUADRANGLE SE SE NWOPERATOR Bridger Basin Oil Corporation Map Dundee Township, Monroe County_____
Feet from North Line of Farm_____
" " East " " "_____
" " South " " "_____
" " West " " "_____
Feet from North Line of Section_____
" " East " " "_____
" " South " " "_____
" " West " " "

LEGEND

○ LOCATION

① RIG

⊕ DRILLING

☀ GAS WELL

● OIL WELL

● SMALL OIL WELL

○ DRY HOLE

● DRY SHOWING OIL

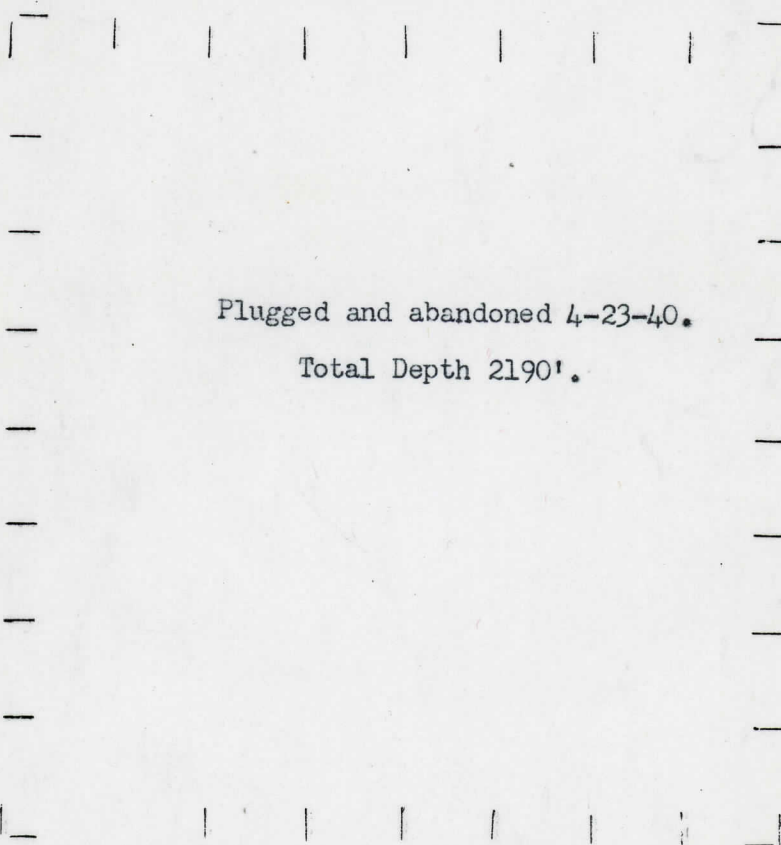
○ DRY SHOWING GAS

○ ABANDONED LOCATION

☀ ABANDONED GAS WELL

● ABANDONED OIL WELL

NOTE: Below make tracing from map, (when no map is obtainable make sketch) showing farm, center of section, this location with measurements and also wells, dry holes, or other locations in the vicinity of this location.



N



REMARKS:

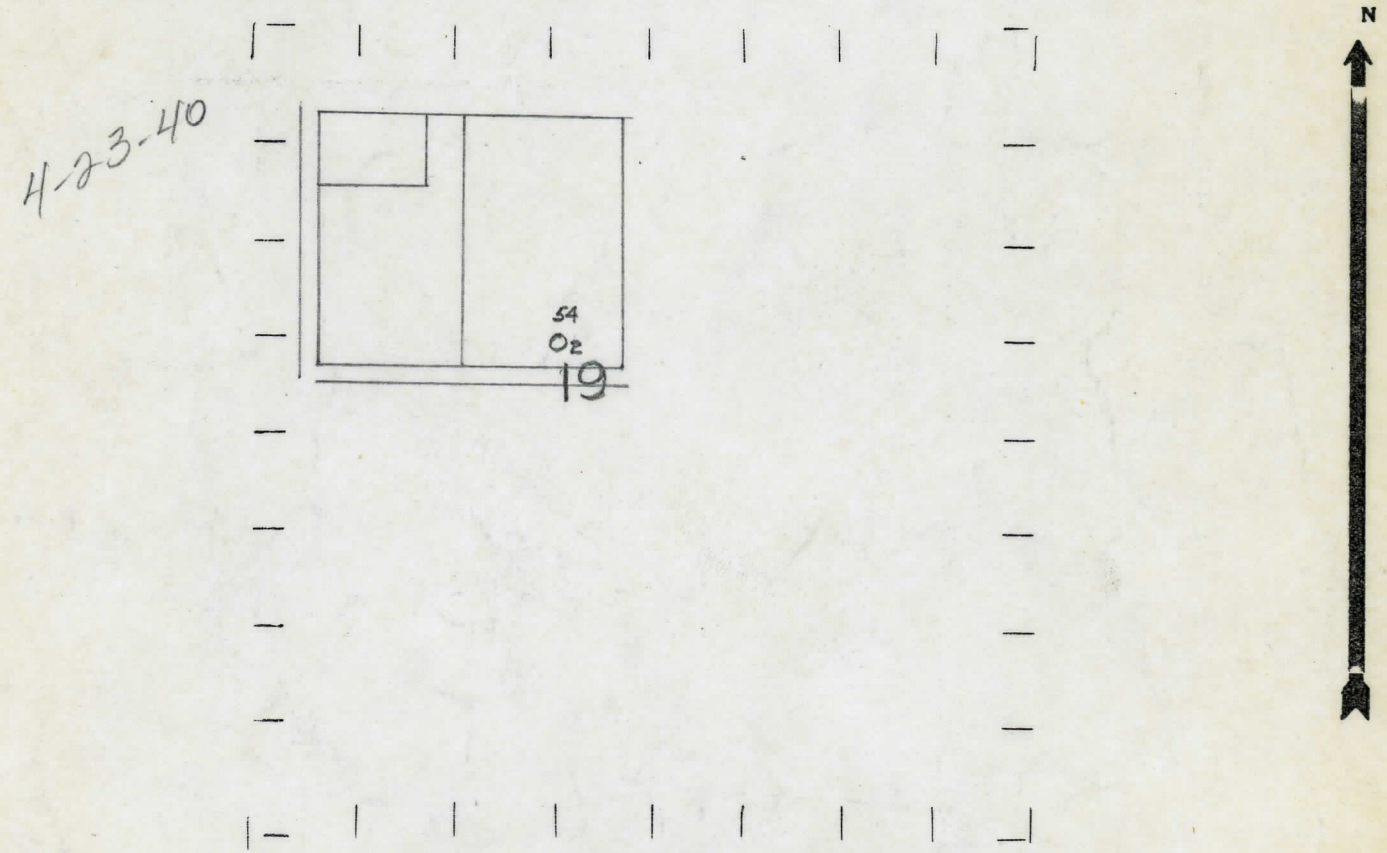
SIGNED

Superintendent or Foreman.

NAME OF STREAM OR WATERS
WELL No. 22 (SERIAL No. 54) FARM
STATE Michigan COUNTY Monroe TWP. Dundee SEC. 19 TOWN 6 S RANGE 6 E
WELL No. 22 (SERIAL No. 54) FARM
NAME OF STREAM OR WATERS
OPERATOR Bridger Basin Oil Corporation Map Dundee Township, Monroe County
Feet from North Line of Farm
Feet from North Line of Section

BRIDGER BASIN OIL COMPANY
LOCATION REPORT
No. 54
Dundee Township, Monroe County
Dusseau & LaPointe
SE SE NW
Bridger Basin Oil Corp.
Dundee - Mon.
LEGEND
O LOCATION
① RIG
⊕ DRILLING
☀ GAS WELL
● OIL WELL
● SMALL OIL WELL
⊖ DRY HOLE
⊕ DRY SHOWING OIL
☀ DRY SHOWING GAS
⊖ ABANDONED LOCATION
☀ ABANDONED GAS WELL
● ABANDONED OIL WELL

NOTE: Below make tracing from map, (when no map is obtainable make sketch) showing farm, center of section, this location with measurements and also wells, dry holes, or other locations in the vicinity of this location.



REMARKS:

SIGNED
Superintendent or Foreman.

DATE November 16, 1939

Corrected

LOCATION REPORT

No. 54

STATE Michigan

COUNTY Monroe

Monroe

DIST. Dundee

TWP. Dundee

SEC. 19

TOWN 6-S

RANGE 6-E

WELL No. 2 (SERIAL No. 54) FARM Dusseau & Lapointe

ACRES

NAME OF STREAM OR WATERS

QUADRANGLE SE SE NW

OPERATOR A. V. Oil & Gas Company

Map Dundee Township, Monroe County

A. V. Oil & Gas Co

Dundee - Mon

Feet from North Line of Farm

Loc

LEGEND

○ LOCATION

① RIG

⊕ DRILLING

☀ GAS WELL

● OIL WELL

⬮ SMALL OIL WELL

⊙ DRY HOLE

⬮ DRY SHOWING OIL

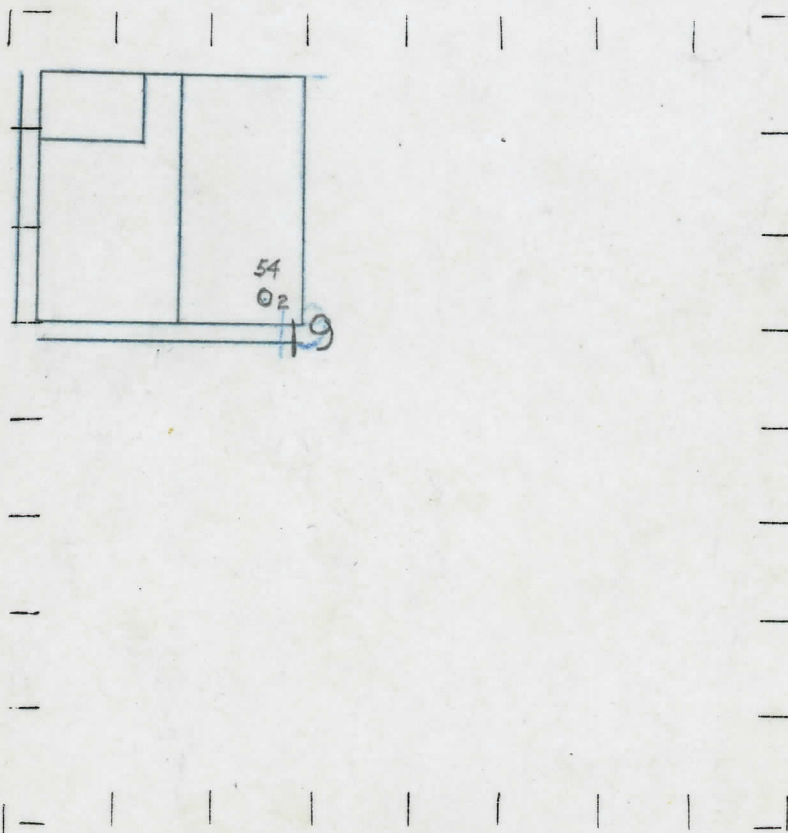
⊙ DRY SHOWING GAS

⊙ ABANDONED LOCATION

☀ ABANDONED GAS WELL

⬮ ABANDONED OIL WELL

NOTE: Below make tracing from map, (when no map is obtainable make sketch) showing farm, center of section, this location with measurements and also wells, dry holes, or other locations in the vicinity of this location.



REMARKS:

SIGNED

Superintendent or Foreman.

DATE September 28, 1939

Collected

LOCATION REPORT

No. 54DATE September 28, 1939

LOCATION REPORT

No. 54STATE MichiganCOUNTY MonroeDIST. DundeeTWP. DundeeSEC. 19TOWN. 6-SRANGE 6-EWELL No. 2 (SERIAL No. 54) FARMRREE. Dusseau & LaPointe

ACRES

NAME OF STREAM OR WATERS

QUADRANGLE SE SE NWOPERATOR A. V. Oil & Gas Company

Map

Dundee Township, Monroe countyA. V. Oil & Gas Co.Dundee-Monroe

Feet from North Line of Farm

" " East " " "

3330

" " South " " "

9180

" " West " " "

Feet from North Line of Section

" " East " " 1/440400" " South " " 1/433330

" " West " " "

LEGEND

○ LOCATION

① RIG

⊕ DRILLING

☀ GAS WELL

● OIL WELL

⬮ SMALL OIL WELL

⊙ DRY HOLE

⬮ DRY SHOWING OIL

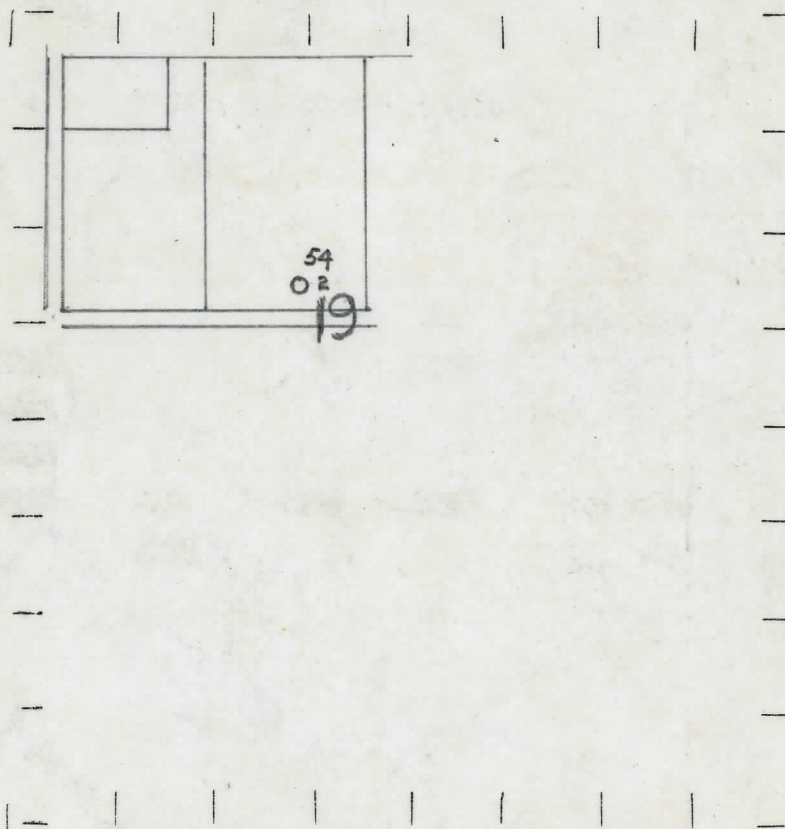
⊙ DRY SHOWING GAS

⊙ ABANDONED LOCATION

⬮ ABANDONED GAS WELL

⬮ ABANDONED OIL WELL

NOTE: Below make tracing from map, (when no map is obtainable make sketch) showing farm, center of section, this location with measurements and also wells, dry holes, or other locations in the vicinity of this location.



REMARKS:

SIGNED

Superintendent or Foreman.

Michigan Producing

No. 54

State Mich. County Lenox Twp. Dundee Sec. 19 Twp. 6 S Rge. 6 E
(Serial No.)

Well No. 2 (country) 54 Farm Dusseau & LaPointe Acres

Operator **Bridger Basin Oil Corp.** Information secured ~~from~~ ^{by} **Scouting Department**

Date well started **12-16-39** Dated well completed **2-2-40** Elevation **676.3**

PRODUCTION RECORD

1st 24 hours natural

2nd 24 hours natural

Date of shot 2-3-40 and 2-6-40 No. of quarts 250 From _____ to _____ From _____ to _____

Date of acid **3-8-40** No. of gallons **1000**

1st 24 hours after acid ~~shock~~ 50 Barrels (Pumped)

1st shot
2nd 24 hours after ~~shot~~ Filled up 1000 ft. Oil.

FORMATION AND CASING RECORD

[illegible]

Remarks 2120' C.T.M. equals 2115' S.L.M.

D. C. Shackelford

D. C. Shackelford