



Western Michigan University
ScholarWorks at WMU

Legacy Scout Tickets from Pure Oil Company

8-20-2021

MGRRE_PureOilScoutTickets_Duval, Amelia_1_21115069650000

MGRRE

Western Michigan University

Follow this and additional works at: <https://scholarworks.wmich.edu/pure>



Part of the Geology Commons

WMU ScholarWorks Citation

MGRRE, "MGRRE_PureOilScoutTickets_Duval, Amelia_1_21115069650000" (2021). *Legacy Scout Tickets from Pure Oil Company*. 6057.

<https://scholarworks.wmich.edu/pure/6057>

This Document is brought to you for free and open access via ScholarWorks at WMU. It has been accepted for inclusion in Legacy Scout Tickets from Pure Oil Company by an authorized administrator of ScholarWorks at WMU. See the National Digital Catalogue - Science Base Catalogue for more collections submitted by MGRRE.



MGRRE_PureOilScoutTickets_Duval, Amelia_1_21115069650000

API 21115069650000

Permit Number 6965

Lease Name Duval, Amelia

Well Number 1

County Monroe

Township 06S

Range 06E

Section 31

2021 DEQ or Pure co_name Good and Good Drilling

Pure Number 58

Latitude 41.9207452

Longitude -83.7639517

WELL REPORT — OUTSIDE OPERATIONS

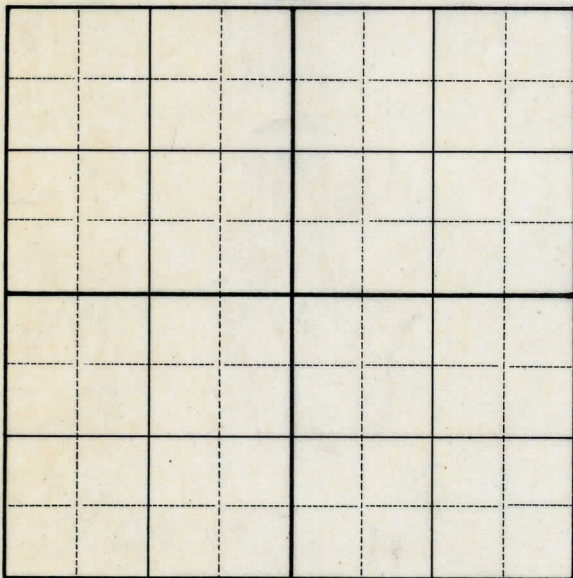
SERIAL NO. 58

STATE Michigan ~~MSH~~ Monroe CO.
 OPERATOR M. R. McPheron
 FARM Amelia Duval WELL NO. 1
 TWP. Summerfield S. 31 T. 6S R. 6E
~~SURVEY~~
 LOC. SW NE NW

WILDCAT ☐ FIELD ☐ FIELD NAME _____
 MAP NO. _____ CO-ORD. _____ ELEV. _____
 STATUS _____

Operator's name changed from:
 James S. Brailey

NORTH



DATE 8-7-50 SCOUT H. J. G.

THE PURE OIL COMPANY

Date 2-3-42 Corrected LOCATION REPORT A.F.E. No. _____

Division Mich. Producing District _____ Lease Amelia Duval

Acres _____ Lease No. _____ Elevation _____ Well No. 1 (Serial No. 58)

Quadrangle SW NE NW Sec. 31 Twp. 6 S Rge. 6 E ~~Butte~~ ~~Dist~~ Twp. Summerfield

Survey _____ County Monroe State Michigan

Operator James S. Brailey Map Summerfield Township, Monroe County

____ Feet from North Line of Lease
____ " " East " " "
____ " " South " " "
____ " " West " " "
____ Feet from North Line of Section
____ " " East " " "
____ " " South " " "
____ " " West " " "

LEGEND

- Location
- ☀ Gas Well
- Oil Well
- ☀ or ☀ Gas - Distillate Well
- or ○ Dry Hole
- Dry Showing Oil
- ☀ Dry Showing Gas
- ⊗ Abandoned Location
- ☀ or ☀ Abandoned Gas Well
- or ● Abandoned Oil Well
- or ○ Input Well



See plat - Serial No. Monroe 58.

Remarks: Change of operator. Scale _____

Submitted by J.S. - Scouting Department Approved by _____ Division Manager
~~Scout Engineer~~
Approved by _____ Vice-President - General Manager

DATE November 9, 1939 *Corrected* LOCATION REPORT No. 58
STATE Michigan COUNTY Dundee ~~DIST~~ Monroe ~~TWP~~ Summerfield SEC. 31 TOWN 6 S RANGE 6 E
WELL No. 11 (SERIAL No. 58) FARM Amelia Duval ACRES
NAME OF STREAM OR WATERS QUADRANGLE SW NE NW

OPERATOR A. V. Oil & Gas Company Map Dundee Township, Monroe County
215 A.V. Oil & Gas Co. Monroe - Dundee
Feet from North Line of Farm

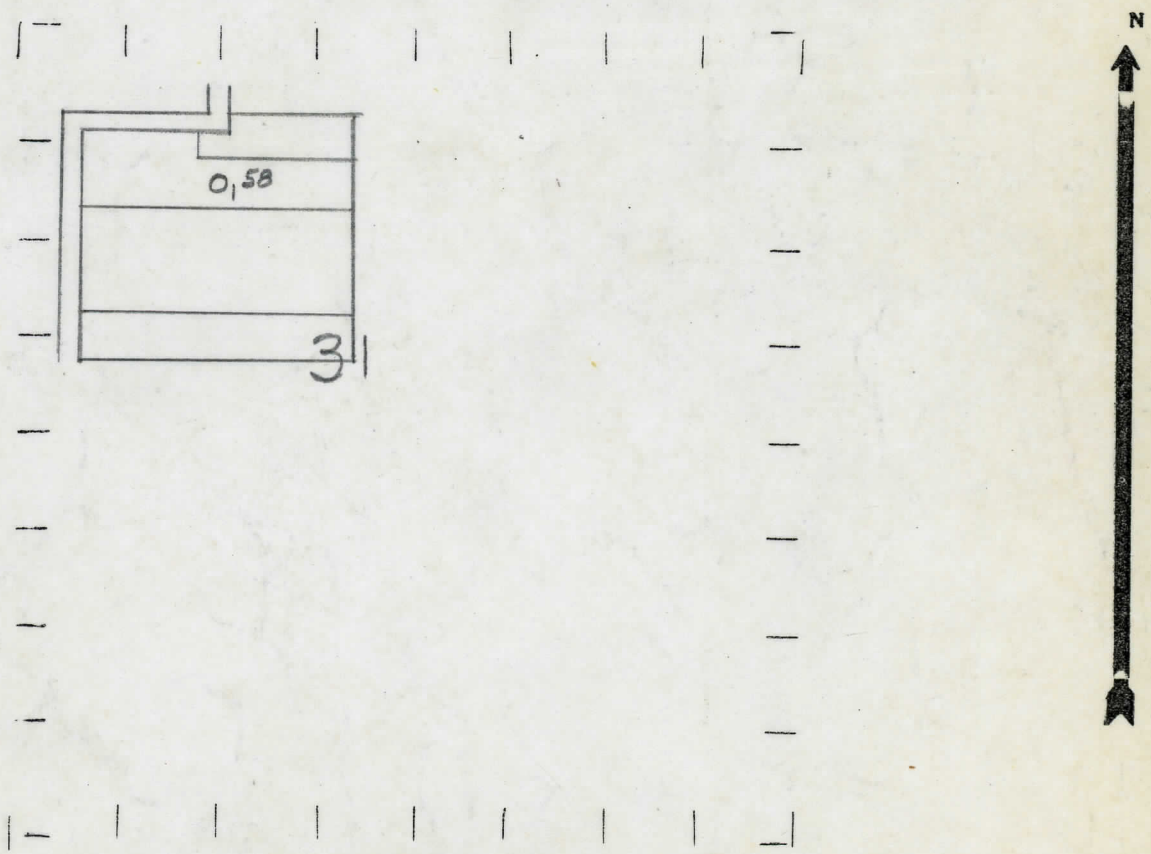
131332 " " East " " "
215215 " " South " " "
" " West " " "

74343 Feet from North Line of Section
1332332 " " East " 1/4 "
" " South " " "
" " West " " "

Change in top.

- LEGEND
- LOCATION
 - ① RIG
 - ⊕ DRILLING
 - ☀ GAS WELL
 - OIL WELL
 - ⬮ SMALL OIL WELL
 - ⊙ DRY HOLE
 - ⬮ DRY SHOWING OIL
 - ⊙ DRY SHOWING GAS
 - ⬮ ABANDONED LOCATION
 - ☀ ABANDONED GAS WELL
 - ⬮ ABANDONED OIL WELL

NOTE: Below make tracing from map, (when no map is obtainable make sketch) showing farm, center of section, this location with measurements and also wells, dry holes, or other locations in the vicinity of this location.



REMARKS:

SIGNED _____

Superintendent or Foreman.

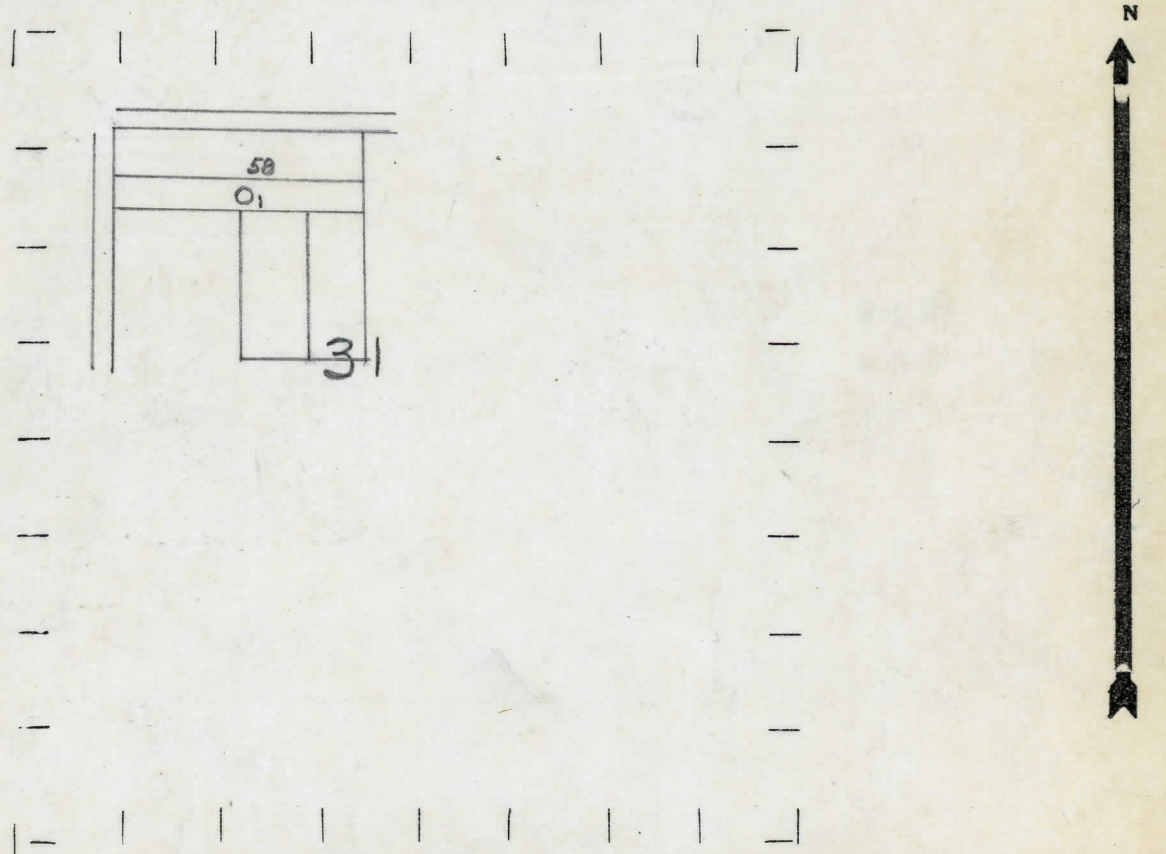
DATE November 2, 1939 LOCATION REPORT No. 38
 STATE Michigan COUNTY Monroe DIST. Summerfield SEC. 31 TOWN 7 S RANGE 6 E
 WELL No. 1 (SERIAL No. 58) FARM Amelia Duvall ACRES
 NAME OF STREAM OR WATERS _____ QUADRANGLE SW NW NW

OPERATOR A. V. Oil & Gas Company Map Summerfield Township, Monroe County
215 215 A.V. Oil & Gas Co. Feet from North Line of Farm
13 132 " " East " " "
215 215 " " South " " "
 " " West " " "
74 73 Feet from North Line of Section
13 132 " " East " " "
 " " South " " "
 " " West " " "

50
 10-30-39

- LEGEND
- LOCATION
 - ⊙ RIG
 - ⊕ DRILLING
 - ☼ GAS WELL
 - OIL WELL
 - ⦿ SMALL OIL WELL
 - ⊖ DRY HOLE
 - ⦿ DRY SHOWING OIL
 - ⊖ DRY SHOWING GAS
 - ⦿ ABANDONED LOCATION
 - ☼ ABANDONED GAS WELL
 - ⦿ ABANDONED OIL WELL

NOTE: Below make tracing from map, (when no map is obtainable make sketch) showing farm, center of section, this location with measurements and also wells, dry holes, or other locations in the vicinity of this location.



REMARKS: _____

 SIGNED _____
 Superintendent or Foreman.

Signed **D. C. Shackelford**