



Western Michigan University
ScholarWorks at WMU

Legacy Scout Tickets from Pure Oil Company

8-20-2021

MGRRE_PureOilScoutTickets_Montry, Henry_2_21115073930000

MGRRE

Western Michigan University

Follow this and additional works at: <https://scholarworks.wmich.edu/pure>



Part of the Geology Commons

WMU ScholarWorks Citation

MGRRE, "MGRRE_PureOilScoutTickets_Montry, Henry_2_21115073930000" (2021). *Legacy Scout Tickets from Pure Oil Company*. 6071.

<https://scholarworks.wmich.edu/pure/6071>

This Document is brought to you for free and open access via ScholarWorks at WMU. It has been accepted for inclusion in Legacy Scout Tickets from Pure Oil Company by an authorized administrator of ScholarWorks at WMU. See the National Digital Catalogue - Science Base Catalogue for more collections submitted by MGRRE.



MGRRE_PureOilScoutTickets_Montry, Henry_2_21115073930000

API 21115073930000

Permit Number 7393

Lease Name Montry, Henry

Well Number 2

County Monroe

Township 06S

Range 06E

Section 30

2021 DEQ or Pure co_name Vanco Oil and Gas Syndicate

Pure Number 72

Latitude 41.92297

Longitude -83.76395

THE PURE OIL COMPANY

LOCATION REPORT

DATE 10-1-41No. 72STATE Mich. COUNTY Monroe DISTRICT Dundee SEC. 30 TOWN 6 S RANGE 6 EWELL No. 2 (SERIAL No. 72) FARM Henry Montry ACRESNAME OF STREAM OR WATERS QUADRANGLE SW SE SWOPERATOR Vanco Oil and Gas Company Map Dundee Township, Monroe County

Feet from North Line of Farm

" " East " " "

" " South " " "

" " West " " "

Feet from North Line of Section

" " East " " "

" " South " " "

" " West " " "

LEGEND

○ LOCATION

① RIG

⊕ DRILLING

☼ GAS WELL

● OIL WELL

● SMALL OIL WELL

⊙ DRY HOLE

◆ DRY SHOWING OIL

⊙ DRY SHOWING GAS

⊙ ABANDONED LOCATION

☼ ABANDONED GAS WELL

● ABANDONED OIL WELL

NOTE: Below make tracing from map, (when no map is obtainable make sketch) showing farm, center of section, this location with measurements and also wells, dry holes, or other locations in the vicinity of this location.

Plugged and abandoned 4-29-41.

Total depth 2184'.

N

REMARKS:

SIGNED

Superintendent or Foreman.

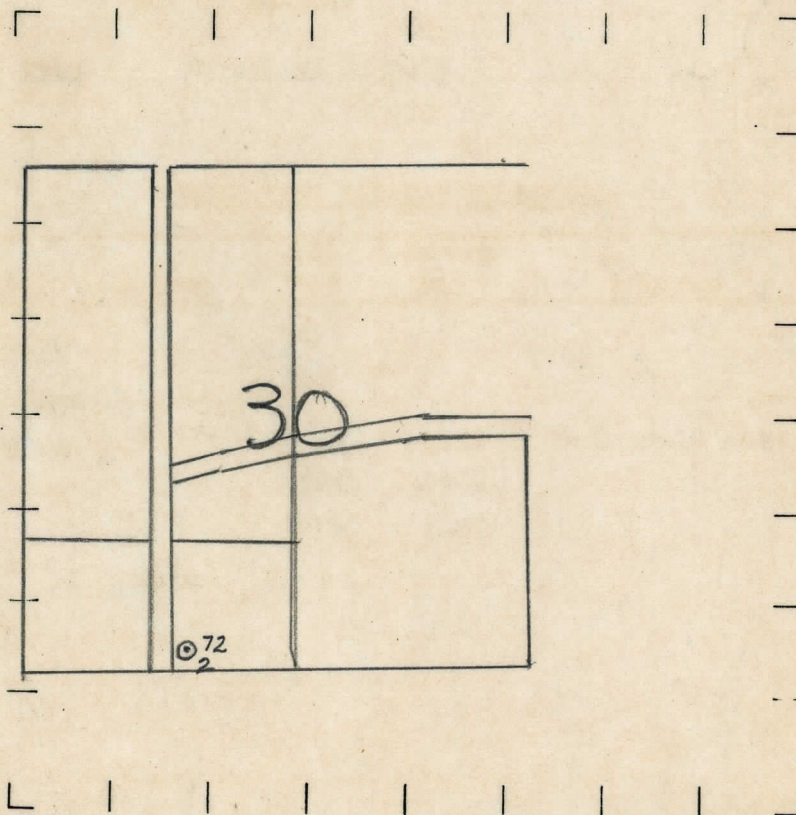
OBSERVATOR VANCO OIL & GAS COMPANY THE PURE OIL COMPANY
 NAME OF STREAM OR WATERS LOCATION REPORT QUADRANGLE NSM 2E73M
 WELL No. 2 (SERIAL No. 72) FARM Henry Montry ACRES
 NAME OF STREAM OR WATERS QUADRANGLE SW SE SW
 OPERATOR Vanco Oil & Gas Co. MAP Dundee Township, Monroe County

Feet from North Line of Farm
 " " East " " "
 610 0 " " South " " "
 220 20 " " West " " "
 Feet from North Line of Section
 1317 7 " " East " 1/4 "
 70 " " South " 1/4 "
 " " West " " "

4-29-41

- LEGEND**
- | | |
|------------------|----------------------|
| ○ LOCATION | ⊕ DRY HOLE |
| ① RIG | ⊕ DRY SHOWING OIL |
| ⊕ DRILLING | ⊕ DRY SHOWING GAS |
| ⊕ GAS WELL | ⊕ ABANDONED LOCATION |
| ● OIL WELL | ⊕ ABANDONED GAS WELL |
| ⊕ SMALL OIL WELL | ⊕ ABANDONED OIL WELL |

NOTE: Below make tracing from map, (when no map is obtainable make sketch) showing farm, center of section, this location with measurements and also wells, dry holes, or other locations in the vicinity of this location. Make copy to keep for reference and send original to Chicago office.



REMARKS:

SIGNED

Superintendent or Foreman.

