



Western Michigan University
ScholarWorks at WMU

Legacy Scout Tickets from Pure Oil Company

8-20-2021

**MGRRE_PureOilScoutTickets_McCarty,
George_1_21115075190000**

MGRRE
Western Michigan University

Follow this and additional works at: <https://scholarworks.wmich.edu/pure>



Part of the Geology Commons

WMU ScholarWorks Citation

MGRRE, "MGRRE_PureOilScoutTickets_McCarty, George_1_21115075190000" (2021). *Legacy Scout Tickets from Pure Oil Company*. 6074.
<https://scholarworks.wmich.edu/pure/6074>

This Document is brought to you for free and open access via ScholarWorks at WMU. It has been accepted for inclusion in Legacy Scout Tickets from Pure Oil Company by an authorized administrator of ScholarWorks at WMU. See the National Digital Catalogue - Science Base Catalogue for more collections submitted by MGRRE.



MGRRE_PureOilScoutTickets_McCarty, George_1_21115075190000

API 21115075190000

Permit Number 7519

Lease Name McCarty, George

Well Number 1

County Monroe

Township 07S

Range 06E

Section 6

2021 DEQ or Pure co_name MCDonald, J. J.

Pure Number 75

Latitude 41.90737

Longitude -83.75103

THE PURE OIL COMPANY
The Pure Oil Company
LOCATION REPORT

DATE April 10, 1940No. 75

STATE Michigan COUNTY Monroe DIST. Summerfield TWP. Summerfield SEC. 66 TOWN 7 S RANGE 6 E
WELL No. 1 (SERIAL No. 75) FARM George McCarty ACRES

NAME OF STREAM OR WATERS _____ QUADRANGLE NE NE NEOPERATOR J. J. McDonald Map Summerfield Township, Monroe County330 330 Feet from North Line of Farm330 330 " " East " " "

" " South " " "

" " West " " "

330 330 Feet from North Line of Section330 330 " " East " " "

" " South " " "

" " West " " "

LEGEND

○ LOCATION

① RIG

⊕ DRILLING

☼ GAS WELL

● OIL WELL

● SMALL OIL WELL

⊙ DRY HOLE

● DRY SHOWING OIL

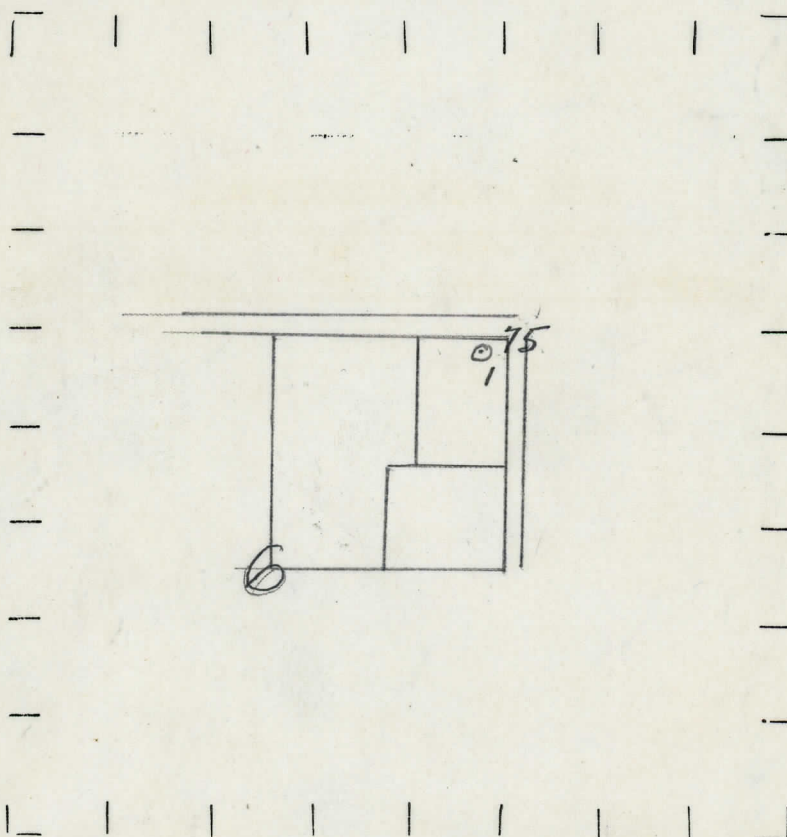
⊙ DRY SHOWING GAS

⊙ ABANDONED LOCATION

☼ ABANDONED GAS WELL

● ABANDONED OIL WELL

NOTE: Below make tracing from map. (when no map is obtainable make sketch) showing farm, center of section, this location with measurements and also wells, dry holes, or other locations in the vicinity of this location.



REMARKS:

SIGNED

Superintendent or Foreman.

Signed