



Western Michigan University
ScholarWorks at WMU

Legacy Scout Tickets from Pure Oil Company

8-20-2021

MGRRE_PureOilScoutTickets_Roe, R & G_3_21115075510000

MGRRE

Western Michigan University

Follow this and additional works at: <https://scholarworks.wmich.edu/pure>



Part of the Geology Commons

WMU ScholarWorks Citation

MGRRE, "MGRRE_PureOilScoutTickets_Roe, R & G_3_21115075510000" (2021). *Legacy Scout Tickets from Pure Oil Company*. 6078.

<https://scholarworks.wmich.edu/pure/6078>

This Document is brought to you for free and open access via ScholarWorks at WMU. It has been accepted for inclusion in Legacy Scout Tickets from Pure Oil Company by an authorized administrator of ScholarWorks at WMU. See the National Digital Catalogue - Science Base Catalogue for more collections submitted by MGRRE.



MGRRE_PureOilScoutTickets_Roe, R & G_3_21115075510000

API 21115075510000

Permit Number 7551

Lease Name Roe, R & G

Well Number 3

County Monroe

Township 06S

Range 06E

Section 30

2021 DEQ or Pure co_name McPheron, M. R.

Pure Number 79

Latitude 41.9281689

Longitude -83.7640139

WELL REPORT - OUTSIDE OPERATIONS

79

SERIAL NO. _____

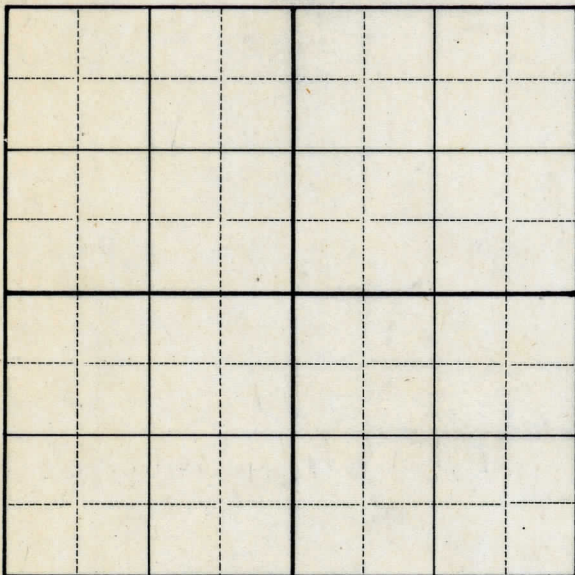
STATE Michigan ~~XXX~~ Monroe ~~PSH~~ CO.OPERATOR M. R. McPheronFARM R. & D. Roe WELL NO. 3~~TWP~~ Dundee 30 6S 6E
SURVEY S. T. R.LOC. SW NE SWWILDCAT ☐ FIELD ☐ FIELD NAME _____

MAP NO. _____ CO-ORD. _____ ELEV. _____

STATUS _____

Operator's name changed from:
James S. Bralley

NORTH

DATE 8-7-50 SCOUT H. J. G.

THE PURE OIL COMPANY

DATE October 23, 1940 *Corrected*

LOCATION REPORT

No.

79

STATE Mich. COUNTY Monroe DIST. Dundee TWP. Dundee SEC. 30 TOWN 6 S RANGE 6 E
WELL No. 33 (SERIAL No. 79) FARM R. and D. Roe ACRES

NAME OF STREAM OR WATERS _____ QUADRANGLE SW NE SW

OPERATOR James S. Brailey Map Dundee Township, Monroe County

Feet from North Line of Farm

" " East " " "
" " South " " "
" " West " " "

Feet from North Line of Section

" " East " " "
" " South " " "
" " West " " "

LEGEND

○ LOCATION

⊙ RIG

⊕ DRILLING

☀ GAS WELL

● OIL WELL

● SMALL OIL WELL

⊙ DRY HOLE

◆ DRY SHOWING OIL

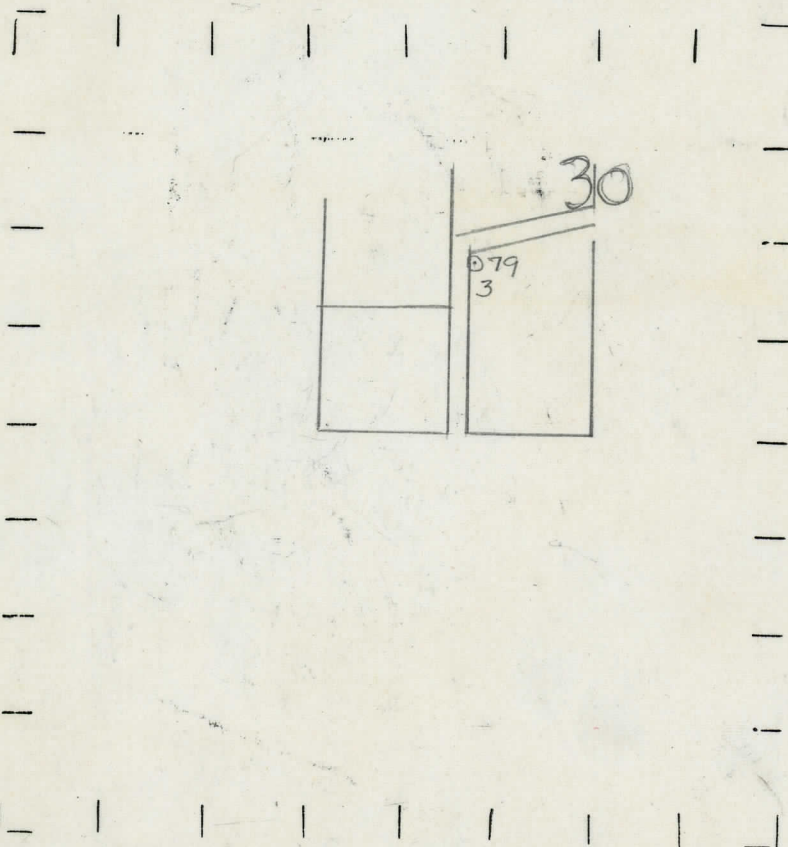
⊙ DRY SHOWING GAS

⊙ ABANDONED LOCATION

☀ ABANDONED GAS WELL

● ABANDONED OIL WELL

NOTE: Below make tracing from map. (when no map is obtainable make sketch) showing farm, center of section, this location with measurements and also wells, dry holes, or other locations in the vicinity of this location.



REMARKS: Correction: location.

SIGNED

Superintendent or Foreman.

STATE Michigan COUNTY Monroe DIST. Dundee SEC. 30 TOWN 6 S RANGE 6 E
WELL No. 33 (SERIAL No. 79) FARM R. and D. Robe ACRES
NAME OF STREAM OR WATERS QUADRANGLE SW NE SW
OPERATOR James S. Brailey Map Dundee Township, Monroe County
James S. Brailey
Feet from North Line of Farm

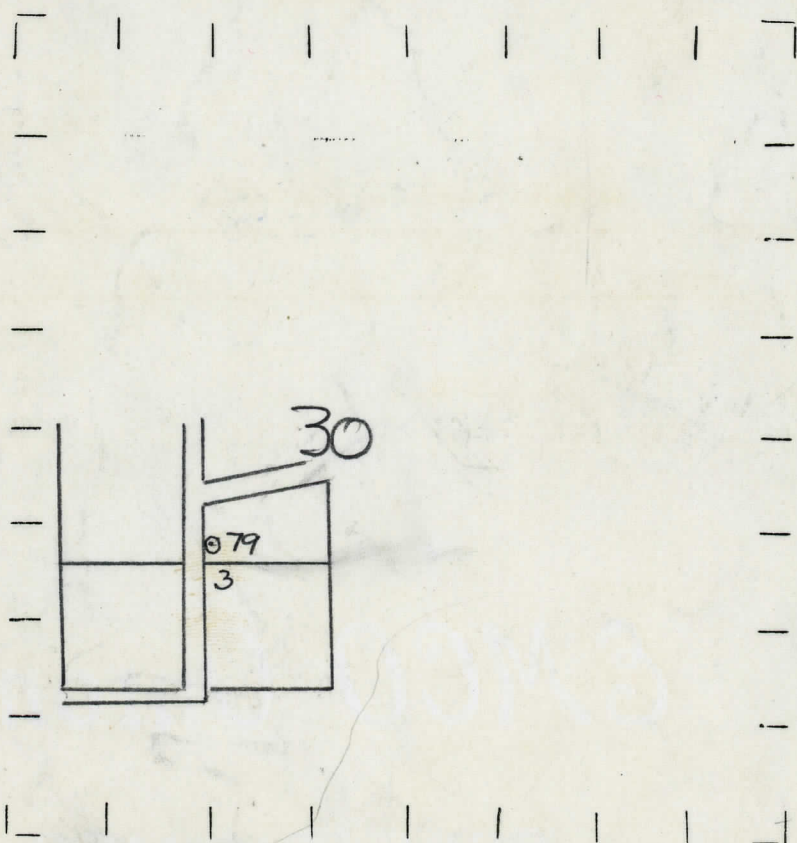
Feet from North Line of Farm	Direction	Feet from North Line of Section
220	East	
220	South	
220	West	
1100	East	
1320	South	
	West	

Loc

LEGEND

- | | |
|------------------|----------------------|
| ○ LOCATION | ⊙ DRY HOLE |
| ① RIG | ⬤ DRY SHOWING OIL |
| ⊕ DRILLING | ⊙ DRY SHOWING GAS |
| ☼ GAS WELL | ⊖ ABANDONED LOCATION |
| ● OIL WELL | ☼ ABANDONED GAS WELL |
| ⬤ SMALL OIL WELL | ⬤ ABANDONED OIL WELL |

NOTE: Below make tracing from map, (when no map is obtainable make sketch) showing farm, center of section, this location with measurements and also wells, dry holes, or other locations in the vicinity of this location.



REMARKS:

SIGNED

W
Superintendent or Foreman.

Michigan Producing Division

Date **August 21, 1940**

No. 79

State Mich. County Monroe Twp. Dundee Sec. 30 Twp. 6 S Rge. 6 E

(Serial No.)

Well No. 3 (County No. 79) Farm R. and D. Roe Acres

Operator **James S. Brailey** Information secured ~~from~~ **Scouting Department**

Date well started 5-1-40 Dated well completed 8-18-40 Elevation 679.5

PRODUCTION RECORD

1st 24 hours natural 240 Barrels

2nd 24 hours natural

[illegible][illegible]

shot
1st 24 hours after acid

shot

2nd 24 hours after acid

FORMATION AND CASING RECORD

[illegible]

Remarks Show oil 810' - small show oil 865' to 870'.

Signed

D. C. Shackelford