



Western Michigan University
ScholarWorks at WMU

Legacy Scout Tickets from Pure Oil Company

8-20-2021

**MGRRE_PureOilScoutTickets_Delaney, John
Heirs_1_21115077320000**

MGRRE
Western Michigan University

Follow this and additional works at: <https://scholarworks.wmich.edu/pure>



Part of the Geology Commons

WMU ScholarWorks Citation

MGRRE, "MGRRE_PureOilScoutTickets_Delaney, John Heirs_1_21115077320000" (2021). *Legacy Scout Tickets from Pure Oil Company*. 6081.
<https://scholarworks.wmich.edu/pure/6081>

This Document is brought to you for free and open access via ScholarWorks at WMU. It has been accepted for inclusion in Legacy Scout Tickets from Pure Oil Company by an authorized administrator of ScholarWorks at WMU. See the National Digital Catalogue - Science Base Catalogue for more collections submitted by MGRRE.



MGRRE_PureOilScoutTickets_Delaney, John Heirs_1_21115077320000

API 21115077320000

Permit Number 7732

Lease Name Delaney, John Heirs

Well Number 1

County Monroe

Township 06S

Range 06E

Section 30

2021 DEQ or Pure co_name Wendrow, B. A.

Pure Number 83

Latitude 41.9368

Longitude -83.75546

THE PURE OIL COMPANY
The Pure Oil Company

DATE June 12, 1940

LOCATION REPORT

No. 83

STATE Michigan COUNTY Monroe DIST. Dundee TWP. Dundee SEC. 300 TOWN 65 RANGE 6E
WELL No. 11 (SERIAL No. 83) FARM John Deane & Sons ACRES
NAME OF STREAM OR WATERS QUADRANGLE NE NW NE
OPERATOR B. A. Hendon Map Dundee Township, Monroe County
Dundee - Monroe

220 220 Feet from North Line of Farm

220 220 " " East " " "

" " South " " "

" " West " " "

220 220 Feet from North Line of Section

" " East " " "

" " South " " "

1100 1100 " " West " " "

LEGEND

○ LOCATION

① RIG

⊕ DRILLING

☼ GAS WELL

● OIL WELL

◆ SMALL OIL WELL

⊙ DRY HOLE

◆ DRY SHOWING OIL

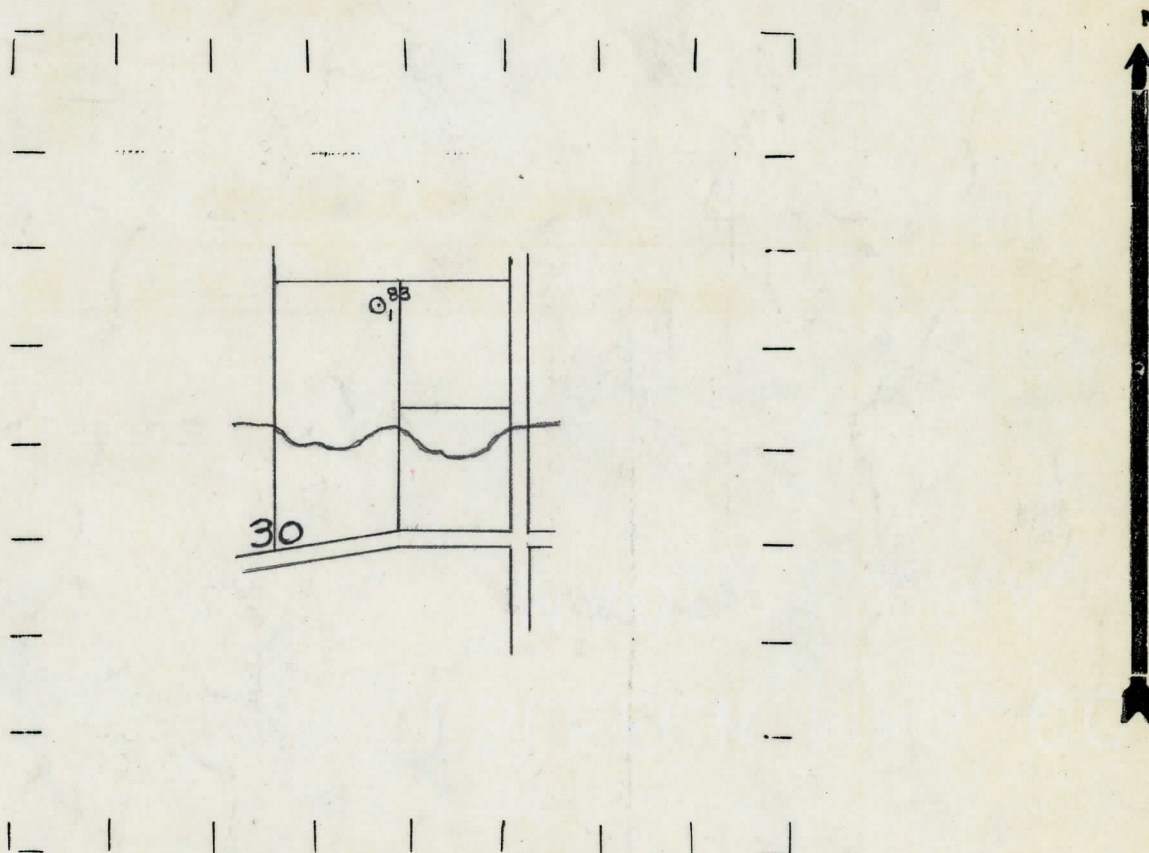
⊙ DRY SHOWING GAS

⊙ ABANDONED LOCATION

☼ ABANDONED GAS WELL

● ABANDONED OIL WELL

NOTE: Below make tracing from map. (when no map is obtainable make sketch) showing farm, center of section, this location with measurements and also wells, dry holes, or other locations in the vicinity of this location.



REMARKS:

SIGNED

Superintendent or Foreman.

D. C. Shackelford