



Western Michigan University
ScholarWorks at WMU

Legacy Scout Tickets from Pure Oil Company

8-20-2021

MGRRE_PureOilScoutTickets_Roe, R & D_4_21115080010000

MGRRE

Western Michigan University

Follow this and additional works at: <https://scholarworks.wmich.edu/pure>



Part of the Geology Commons

WMU ScholarWorks Citation

MGRRE, "MGRRE_PureOilScoutTickets_Roe, R & D_4_21115080010000" (2021). *Legacy Scout Tickets from Pure Oil Company*. 6087.

<https://scholarworks.wmich.edu/pure/6087>

This Document is brought to you for free and open access via ScholarWorks at WMU. It has been accepted for inclusion in Legacy Scout Tickets from Pure Oil Company by an authorized administrator of ScholarWorks at WMU. See the National Digital Catalogue - Science Base Catalogue for more collections submitted by MGRRE.



MGRRE_PureOilScoutTickets_Roe, R & D_4_21115080010000

API 21115080010000

Permit Number 8001

Lease Name Roe, R & D

Well Number 4

County Monroe

Township 06S

Range 06E

Section 30

2021 DEQ or Pure co_name McPheron, M. R.

Pure Number 89

Latitude 41.93038

Longitude -83.76421

THE PURE OIL COMPANY

DATE October 23, 1940 Corrected

LOCATION REPORT

No. 89STATE Mich. COUNTY Monroe DIST. Dundee TWP. Dundee SEC. 30 TOWN 6-S RANGE 6-E
WELL No. 4 (SERIAL No. 889) FARM R. and D. Roe ACRES

NAME OF STREAM OR WATERS

QUADRANGLE SW SE NWOPERATOR James S. BraileyMap Dundee Township, Monroe County

Feet from North Line of Farm

" " East " " "

" " South " " "

" " West " " "

Feet from North Line of Section

1330 330 " " East 1/4" 1/4"124 24 " " South " " "

" " West " " "

LEGEND

○ LOCATION

① RIG

⊕ DRILLING

☼ GAS WELL

● OIL WELL

● SMALL OIL WELL

⊙ DRY HOLE

⊙ DRY SHOWING OIL

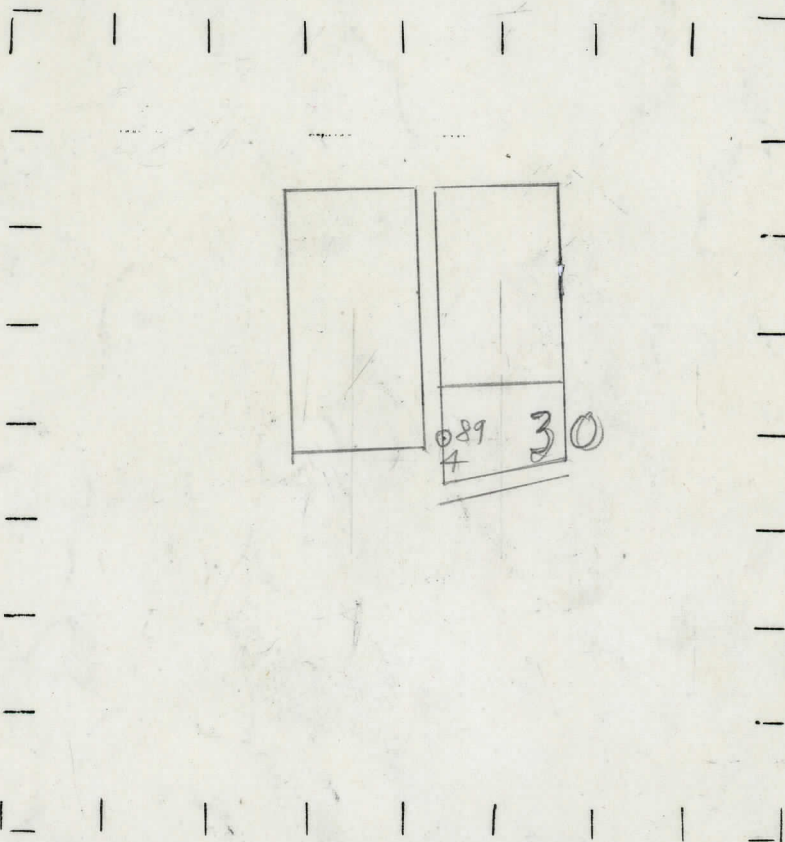
⊙ DRY SHOWING GAS

⊙ ABANDONED LOCATION

⊙ ABANDONED GAS WELL

⊙ ABANDONED OIL WELL

NOTE: Below make tracing from map. (when no map is obtainable make sketch) showing farm, center of section, this location with measurements and also wells, dry holes, or other locations in the vicinity of this location.

REMARKS: Correcting location

SIGNED

W
 Superintendent or Foreman.

NAME OF STREAM OR WATER

MEET NO. (SERIAL NO. 003) EARN

WELL No. 49 (SERIAL No. 89) FARM

NAME OF STREAM OR WATERS

OPERATOR James S. Brailey

697 697 James S Brailey
Feet from North Line of Farm

Feet from North Line of Farm

“ “ East “ “ “

“ “ South “ “ “

220 220

“ “ West “ “ “

200 260

Feet from North Line of Section

1330 1330

“ “ East “ “ “

“ “ South “ “ “

“ “ West. “ “ “

Wash

Prague January 1905

LOCATION REPORT

[illegible]

BDEC

K. SUG D. BOE

YCHER

PREXX

R. and D. Roe

ACRES

QUADRANGLE NW NE SW - SW

Map Dundee Township, Monroe County

Dundee - Monroe


Love

LEGEND

○ LOCATION

① RIG

⊕ DRILLING

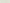
 **GAS WELL**


● OIL WELL

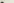
● SMALL OIL WELL

 DRY HOLE

● DRY SHOWING OIL

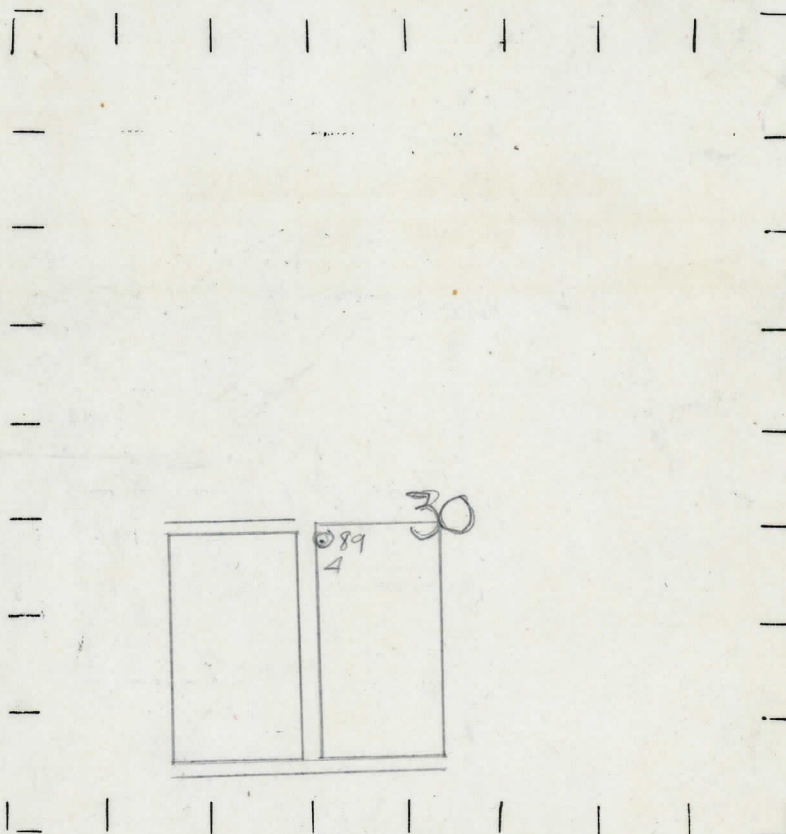
 DRY SHOWING GAS

 ABANDONED LOCATION

 **ABANDONED GAS WELL.**

ABANDONED OIL WELL

NOTE: Below make tracing from map, (when no map is obtainable make sketch) showing farm, center of section, this location with measurements and also wells, dry holes, or other locations in the vicinity of this location.



REMARKS:

SIGNED

Superintendent or Foreman.

