



Western Michigan University
ScholarWorks at WMU

Legacy Scout Tickets from Pure Oil Company

8-20-2021

MGRRE_PureOilScoutTickets_Bragg_1_21115080410000

MGRRE

Western Michigan University

Follow this and additional works at: <https://scholarworks.wmich.edu/pure>



Part of the Geology Commons

WMU ScholarWorks Citation

MGRRE, "MGRRE_PureOilScoutTickets_Bragg_1_21115080410000" (2021). *Legacy Scout Tickets from Pure Oil Company*. 6090.

<https://scholarworks.wmich.edu/pure/6090>

This Document is brought to you for free and open access via ScholarWorks at WMU. It has been accepted for inclusion in Legacy Scout Tickets from Pure Oil Company by an authorized administrator of ScholarWorks at WMU. See the National Digital Catalogue - Science Base Catalogue for more collections submitted by MGRRE.



MGRRE_PureOilScoutTickets_Bragg_1_21115080410000

API 21115080410000

Permit Number 8041

Lease Name Bragg

Well Number 1

County Monroe

Township 06S

Range 06E

Section 30

2021 DEQ or Pure co_name Kernodle, George L

Pure Number 92

Latitude 41.92938

Longitude -83.76558

DATE October 23, 1940

Corrected

THE PURE OIL COMPANY

No. 92Date June 30, 1942

LOCATION REPORT

A.F.E. No. _____

Division Mich. Producing

District _____

Lease BraggAcres _____ Lease No. _____ Elevation _____ Well No. 1 (Serial No. 92)Quadrangle NE NW SW Sec. 30 Twp. 6 S Rge. 6 E Twp. DundeeSurvey _____ County Monroe State MichiganOperator George L. Kernodle Map Dundee Township, Monroe County

Feet from North Line of Lease

" " East " " "

" " South " " "

" " West " " "

Feet from North Line of Section

" " East " " "

" " South " " "

" " West " " "

LEGEND

○ Location



Gas Well



Dry Showing Gas



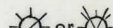
Oil Well



Abandoned Location



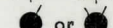
Gas - Distillate Well



Abandoned Gas Well



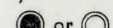
Dry Hole



Abandoned Oil Well



Dry Showing Oil



Input Well

Plugged and abandoned 5-1-42.

Total Depth 2145'.

N

Scale _____

Remarks: _____

Submitted by _____

Civil Engineer

Approved by _____

Approved by _____

Division Manager

Vice-President - General Manager

Date

June 30, 1915

LOCATION REPORT

A.E.E. No.

STATE Mich. COUNTY Monroe DIST. Dundee TWP. Dundee SEC. 30 TOWN 6-S RANGE 6-E
 WELL No. 1 (SERIAL No. 992) FARM Bragg ACRES

NAME OF STREAM OR WATERS QUADRANGLE NE NW SW

OPERATOR George L. Kernodle Map Dundee Township, Monroe County

Feet from North Line of Farm

" " East " " "

" " South " " "

" " West " " "

232/32

Feet from North Line of Section

" " East " " "

" " South " " "

1277/277

" " West " " "

LEGEND

○ LOCATION

⊕ RIG

⊕ DRILLING

☼ GAS WELL

● OIL WELL

● SMALL OIL WELL

⊙ DRY HOLE

⊙ DRY SHOWING OIL

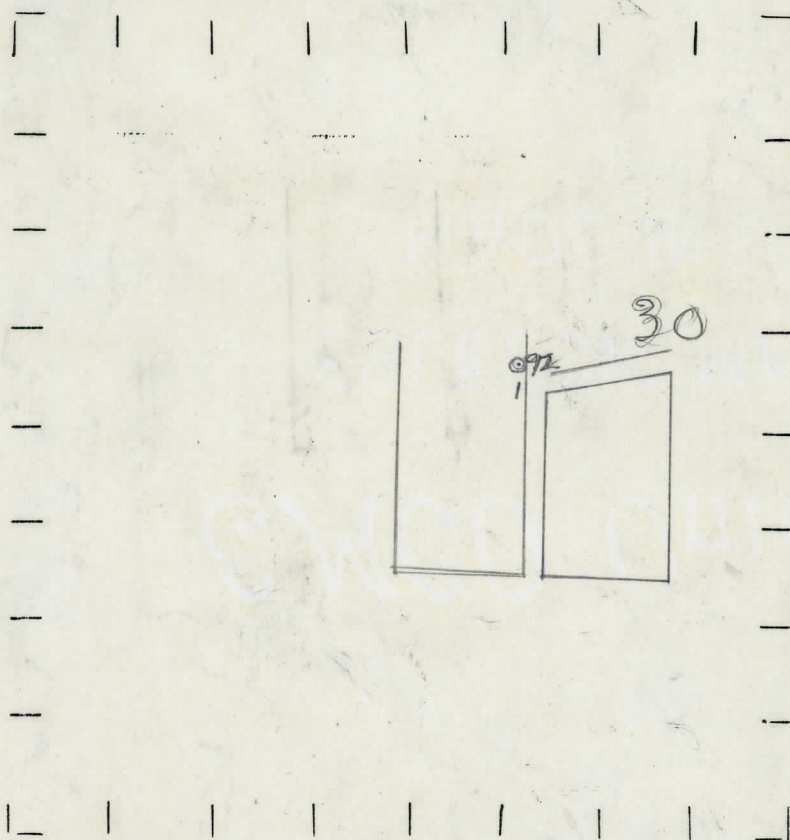
⊙ DRY SHOWING GAS

⊙ ABANDONED LOCATION

⊙ ABANDONED GAS WELL

⊙ ABANDONED OIL WELL

NOTE: Below make tracing from map, (when no map is obtainable make sketch) showing farm, center of section, this location with measurements and also wells, dry holes, or other locations in the vicinity of this location.



REMARKS: Correcting location

SIGNED

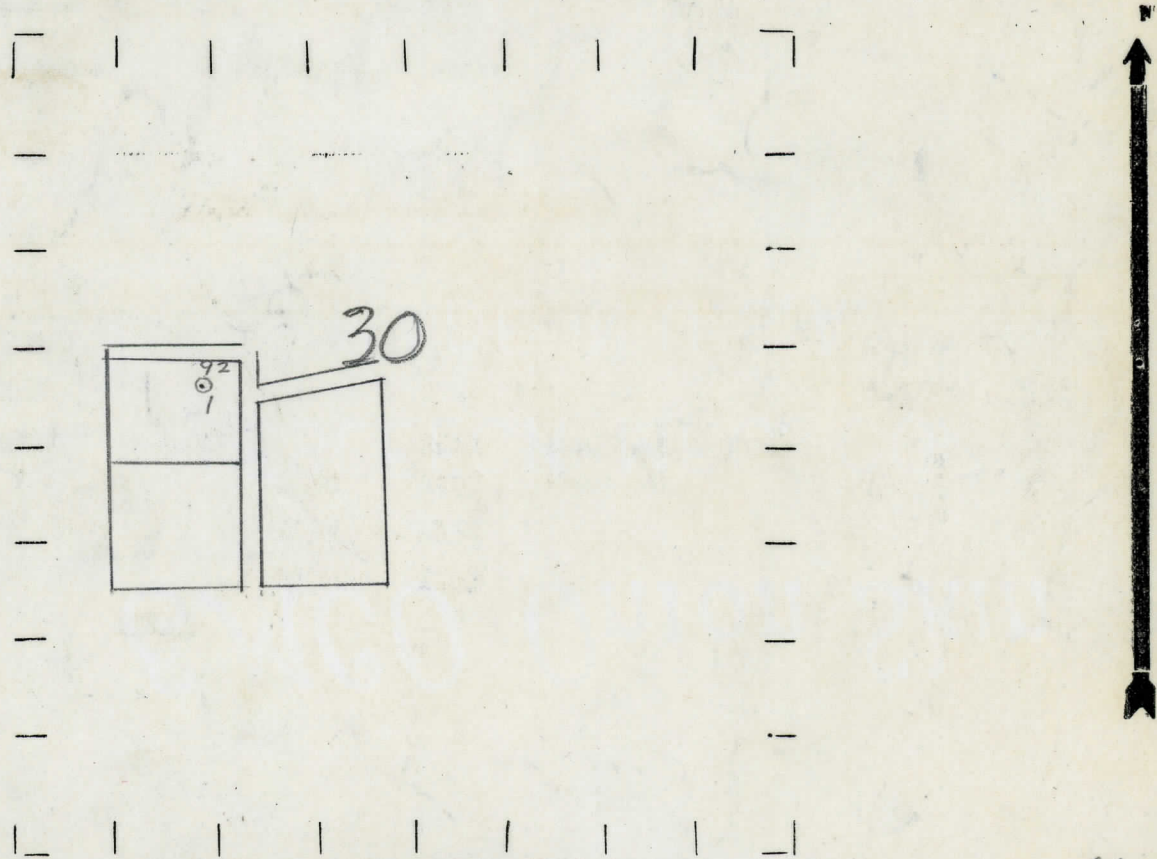
Superintendent or Foreman.

NAME OF ALLEYS OR AVENUES
 ALLEY NO. J (SERIAL NO. 05) EVIDENCE
 STATE Michigan COUNTY Monroe DISTRICT Dundee SEC. 30 TOWN 6S RANGE 6E
 WELL No. 1/ (SERIAL No. 92) FARM Bragg ACRES
 NAME OF STREAM OR WATERS QUADRANGLE NE NW SW
 OPERATOR George L. Kernodle Map Dundee Township, Monroe County
 Geo. L. Kernodle Dundee - Monroe

Feet from North Line of Farm
 220 220 " " East " " "
 220 220 " " South " " "
 " " West " " "
 232 232 Feet from North Line of Section 1/4
 " " East " " "
 " " South " " "
 1100 1100 " " West " " "

LEGEND
 ○ LOCATION
 ⊕ RIG
 ⊕ DRILLING
 ☼ GAS WELL
 ● OIL WELL
 ● SMALL OIL WELL
 ⊕ DRY HOLE
 ⊕ DRY SHOWING OIL
 ⊕ DRY SHOWING GAS
 ⊕ ABANDONED LOCATION
 ⊕ ABANDONED GAS WELL
 ⊕ ABANDONED OIL WELL

NOTE: Below make tracing from map, (when no map is obtainable make sketch) showing farm, center of section, this location with measurements and also wells, dry holes, or other locations in the vicinity of this location.



REMARKS: Footage on this location, or on No. 57 is evidently wrong. #57 evidently 1/4 wrong -

SIGNED W
 Superintendent or Foreman.

Michigan Producing Division

Date **November 20, 1940**

No. 92

State Mich. County Monroe Twp. Dundee Sec. 30 Twp. 6 S Rge. 6 E

Well No. 1 (Serial No. 92) Farm Bragg Acres

Operator **George L. Kernodle** Information secured ^{By} ~~xxxx~~ **Scouting Department**

Date well started **9-26-40** Dated well completed **10-31-40** Elevation **675.4**

PRODUCTION RECORD

1st 24 hours natural Filled up 900 ft.

2nd 24 hours natural

[illegible]

Date of ~~acid~~^{shot} 11-2-40 No. of gallons 60

shot
1st 24 hours after ~~sex~~ 30 Barrels (Pumped)

shot
2nd 24 hours after acid

FORMATION AND CASING RECORD

[illegible]

Remarks 2128' C.T.M. equals 2145' S.L.M. Water at 110'.

Signed

D. C. Shackelford