



Western Michigan University  
ScholarWorks at WMU

---

Legacy Scout Tickets from Pure Oil Company

---

8-20-2021

**MGRRE\_PureOilScoutTickets\_Judit, John\_1\_21115128330000**

MGRRE

*Western Michigan University*

Follow this and additional works at: <https://scholarworks.wmich.edu/pure>



Part of the Geology Commons

---

#### **WMU ScholarWorks Citation**

MGRRE, "MGRRE\_PureOilScoutTickets\_Judit, John\_1\_21115128330000" (2021). *Legacy Scout Tickets from Pure Oil Company*. 6104.

<https://scholarworks.wmich.edu/pure/6104>

This Document is brought to you for free and open access via ScholarWorks at WMU. It has been accepted for inclusion in Legacy Scout Tickets from Pure Oil Company by an authorized administrator of ScholarWorks at WMU. See the National Digital Catalogue - Science Base Catalogue for more collections submitted by MGRRE.



---

**MGRRE\_PureOilScoutTickets\_Judit, John\_1\_21115128330000**

API 21115128330000

Permit Number 12833

Lease Name Judit, John

Well Number 1

County Monroe

Township 06S

Range 06E

Section 29

2021 DEQ or Pure co\_name Rowe, Vernon H.

Pure Number 106

Latitude 41.92972

Longitude -83.74241

# THE PURE OIL COMPANY LOCATION REPORT

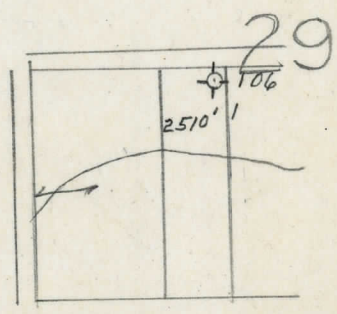
Date December 11, 1946 A.F.E. No. \_\_\_\_\_  
 Division Mich. Producing District \_\_\_\_\_ Lease John Judit  
 Acres \_\_\_\_\_ Lease No. \_\_\_\_\_ Elevation \_\_\_\_\_ Well No. 1 (Serial No. 106)  
 Quadrangle NW NE SW Sec. 29 Twp. 6 S Rge. 6 E Twp. Dundee  
 Survey \_\_\_\_\_ County Monroe State Michigan  
 Operator Vernon H. Rowe Map Dundee Township, Monroe County

<u>220</u>	<u>220</u>	Feet from North Line of Lease
<u>220</u>	<u>220</u>	" " East " " "
		" " South " " "
		" " West " " "
<u>220</u>	<u>220</u>	Feet from North Line of Section
<u>700</u>	<u>700</u>	" " East " " "
		" " South " " "
		" " West " " "

**LEGEND**

- Location
- ☀ Gas Well
- Oil Well
- ☀ Gas - Distillate Well
- ⊙ or ○ Dry Hole
- Dry Showing Oil
- ☀ Dry Showing Gas
- ⊙ Abandoned Location
- ☀ or ☀ Abandoned Gas Well
- or ● Abandoned Oil Well
- or ○ Input Well

*Low*



Remarks: \_\_\_\_\_

Submitted by CB Civil Engineer Approved by \_\_\_\_\_ Division Manager

Approved by \_\_\_\_\_ Vice-President - General Manager

Scale \_\_\_\_\_