



Western Michigan University
ScholarWorks at WMU

Legacy Scout Tickets from Pure Oil Company

8-20-2021

MGRRE_PureOilScoutTickets_Nobles, J._1_21117003000000

MGRRE

Western Michigan University

Follow this and additional works at: <https://scholarworks.wmich.edu/pure>



Part of the Geology Commons

WMU ScholarWorks Citation

MGRRE, "MGRRE_PureOilScoutTickets_Nobles, J._1_21117003000000" (2021). *Legacy Scout Tickets from Pure Oil Company*. 6109.

<https://scholarworks.wmich.edu/pure/6109>

This Document is brought to you for free and open access via ScholarWorks at WMU. It has been accepted for inclusion in Legacy Scout Tickets from Pure Oil Company by an authorized administrator of ScholarWorks at WMU. See the National Digital Catalogue - Science Base Catalogue for more collections submitted by MGRRE.



MGRRE_PureOilScoutTickets_Nobles, J._1_21117003000000

API 21117003000000

Permit Number 300

Lease Name Nobles, J.

Well Number 1

County Montcalm

Township 12N

Range 05W

Section 27

2021 DEQ or Pure co_name Hill Top Oil and Gas Company

Pure Number 5

Latitude 43.39448

Longitude -84.8927

Corrected Location Report.

THE PURE OIL COMPANY

~~LOCATION REPORT~~

No. 5

DATE *Jan. 12th 1929*

STATE *Michigan* COUNTY *Montcalm* DIST. *Richland* TWP. *Richland* SEC. *27* TOWN *12N* RANGE *5W*
PREC.

WELL No. *1* (SERIAL No. *5*) FARM *C.M. Noble* ACRES

NAME OF STREAM OR WATERS QUADRANGLE

OPERATOR *Hill Top Oil & Gas Co.* MAP *Richland Twp. Montcalm Co.*

Feet from North Line of Farm

660 " " East " " "

300 " " South " " "

660 " " West " " "

Feet from North Line of Section

1980 " " East " " "

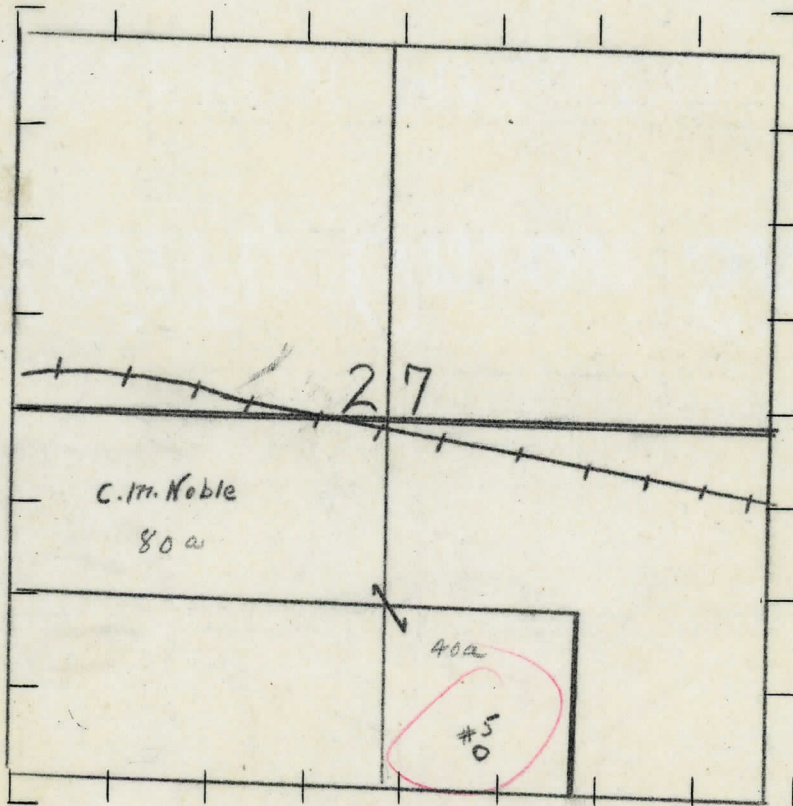
300 " " South " " "

" " West " " "

LEGEND

- LOCATION
- ⊙ RIG
- ⊕ DRILLING
- ⊗ GAS WELL
- OIL WELL
- ⦿ SMALL OIL WELL
- ⊖ DRY HOLE
- ⊕ DRY SHOWING OIL
- ⊗ DRY SHOWING GAS
- ⊖ ABANDONED LOCATION
- ⊗ ABANDONED GAS WELL
- ⦿ ABANDONED OIL WELL

NOTE: Below make tracing from map, (when no map is obtainable make sketch) showing farm, center of section, this location with measurements and also wells, dry holes, or other locations in the vicinity of this location. Make copy to keep for reference and send original to Columbus office.



REMARKS:

.....
.....
.....

SIGNED

Superintendent or Foreman.

*TAP MAP CK
MAP CK
770
710*

THE PURE OIL COMPANY
LOCATION REPORT

DATE 1-5-29

No.

STATE Michigan COUNTY Montcalm DIST. TWP. Richland SEC. 27 TOWN 12 N RANGE 5 N
PREC.

WELL No. 1 (SERIAL No. 5) FARM C.M. Noble ACRES

NAME OF STREAM OR WATERS QUADRANGLE

OPERATOR C.M. Noble et al MAP

Feet from North Line of Farm

150 " " East " " "

150 " " South " " "

" " West " " "

Feet from North Line of Section

" " East " " "

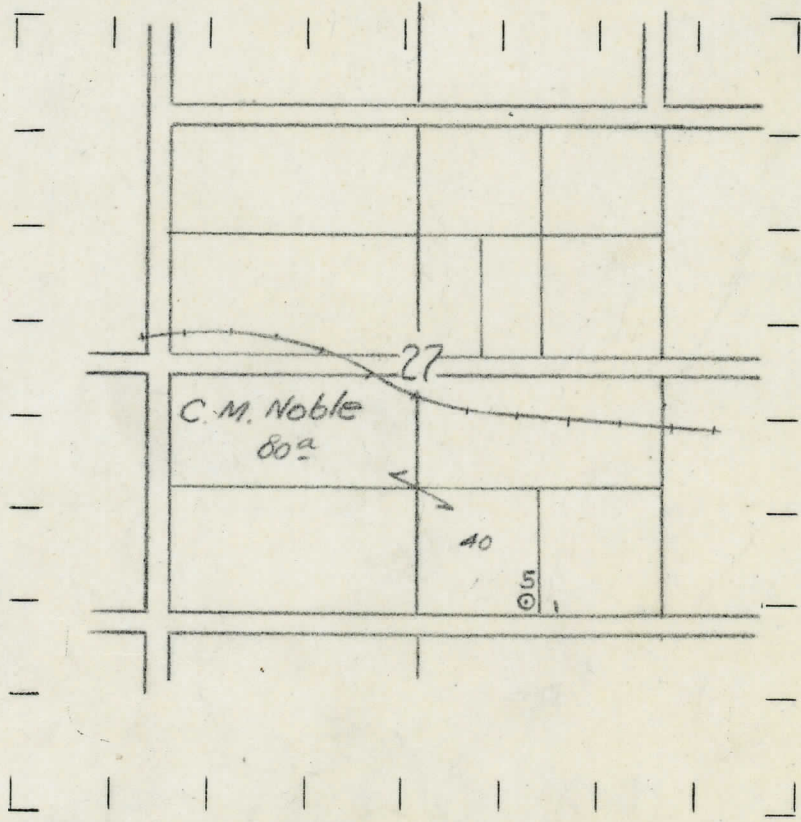
" " South " " "

" " West " " "

LEGEND

- O LOCATION
- ⊕ RIG
- ⊕ DRILLING
- ⊕ GAS WELL
- OIL WELL
- ⊕ SMALL OIL WELL
- ⊕ DRY HOLE
- ⊕ DRY SHOWING OIL
- ⊕ DRY SHOWING GAS
- ⊕ ABANDONED LOCATION
- ⊕ ABANDONED GAS WELL
- ⊕ ABANDONED OIL WELL

NOTE: Below make tracing from map, (when no map is obtainable make sketch) showing farm, center of section, this location with measurements and also wells, dry holes, or other locations in the vicinity of this location. Make copy to keep for reference and send original to Columbus office.



REMARKS:

.....
.....
.....

SIGNED

Superintendent or Foreman