



Western Michigan University
ScholarWorks at WMU

Legacy Scout Tickets from Pure Oil Company

8-20-2021

MGRRE_PureOilScoutTickets_Moyses & Keeney Consolidated_1_21117127480000

MGRRE

Western Michigan University

Follow this and additional works at: <https://scholarworks.wmich.edu/pure>



Part of the Geology Commons

WMU ScholarWorks Citation

MGRRE, "MGRRE_PureOilScoutTickets_Moyses & Keeney Consolidated_1_21117127480000" (2021).
Legacy Scout Tickets from Pure Oil Company. 6848.
<https://scholarworks.wmich.edu/pure/6848>

This Document is brought to you for free and open access via ScholarWorks at WMU. It has been accepted for inclusion in Legacy Scout Tickets from Pure Oil Company by an authorized administrator of ScholarWorks at WMU. See the National Digital Catalogue - Science Base Catalogue for more collections submitted by MGRRE.



**MGRRE_PureOilScoutTickets_Moyses & Keeney
Consolidated_1_21117127480000**

API 21117127480000

Permit Number 12748

Lease Name Moyses & Keeney Consolidated

Well Number 1

County Montcalm

Township 12N

Range 08W

Section 9

2021 DEQ or Pure co_name Stewart, Fred

Pure Number 765

Latitude 43.45091

Longitude -85.27485

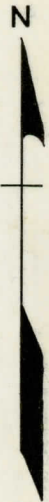
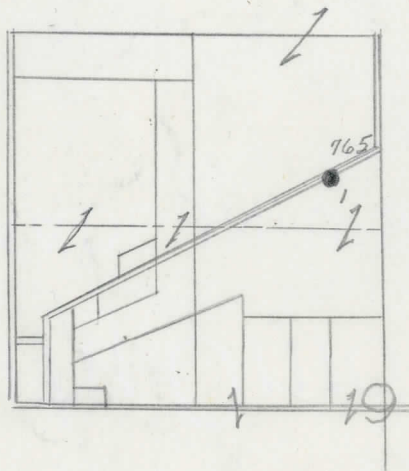
THE PURE OIL COMPANY LOCATION REPORT

Date Nov. 19, 1946 A.F.E. No. Moyses-Keeney Consolidated
 Division Mich. Producing District _____ Lease Moyses-Keeney Consolidated
 Acres _____ Lease No. _____ Elevation _____ Well No. 1 (Serial No. 765)
 Quadrangle C SE NE NW Sec. 9 Twp. 12 N Rge. 8 W Dist. Cato
 Survey _____ County Montcalm State Michigan
 Operator Ohio Oil Co. Map Cato Township, Montcalm County

<u>330</u>	<u>330</u>	Feet from North Line of Lease
<u>380</u>	<u>380</u>	" " East " " "
		" " South " " "
		" " West " " "
<u>330</u>	<u>330</u>	Feet from North Line of Section
<u>380</u>	<u>380</u>	" " East " <u>1/4</u> "
		" " South " " "
		" " West " " "

LEGEND

Gas Well	Location
Oil Well	Dry Showing Gas
Gas - Distillate Well	Abandoned Location
or Dry Hole	or Abandoned Gas Well
Dry Showing Oil	or Abandoned Oil Well
	or Input Well



Remarks: _____ Scale _____

Submitted by CB Civil Engineer Approved by _____ Division Manager
 Approved by _____ Vice-President - General Manager