



Western Michigan University
ScholarWorks at WMU

Legacy Scout Tickets from Pure Oil Company

8-20-2021

**MGRRE_PureOilScoutTickets_Stolliker,
George_1_21119108180000**

MGRRE
Western Michigan University

Follow this and additional works at: <https://scholarworks.wmich.edu/pure>



Part of the Geology Commons

WMU ScholarWorks Citation

MGRRE, "MGRRE_PureOilScoutTickets_Stolliker, George_1_21119108180000" (2021). *Legacy Scout Tickets from Pure Oil Company*. 6859.

<https://scholarworks.wmich.edu/pure/6859>

This Document is brought to you for free and open access via ScholarWorks at WMU. It has been accepted for inclusion in Legacy Scout Tickets from Pure Oil Company by an authorized administrator of ScholarWorks at WMU. See the National Digital Catalogue - Science Base Catalogue for more collections submitted by MGRRE.



MGRRE_PureOilScoutTickets_Stolliker, George_1_21119108180000

API 21119108180000

Permit Number 10818

Lease Name Stolliker, George

Well Number 1

County Montmorency

Township 30N

Range 03E

Section 15

2021 DEQ or Pure co_name Stevens, George

Pure Number 30

Latitude 44.99797

Longitude -84.06186

WELL REPORT - OUTSIDE OPERATIONS

SERIAL NO. 30

STATE Michigan ~~PSH~~ Montmorency
CO.

OPERATOR George Stevens

FARM Geo. Stolliker WELL NO. 1

TWP. Avery S. 15 T. 30N R. 3E
~~SURVEY~~

LOC. SW NW NE

WILDCAT FIELD FIELD NAME _____

MAP NO. _____ CO-ORD. _____ ELEV. _____

STATUS Total Depth 2168'. Plugged back 2158'.
Plugged and Abandoned 1-21-49.

NORTH

DATE 2-23-49 SCOUT H. J. G.

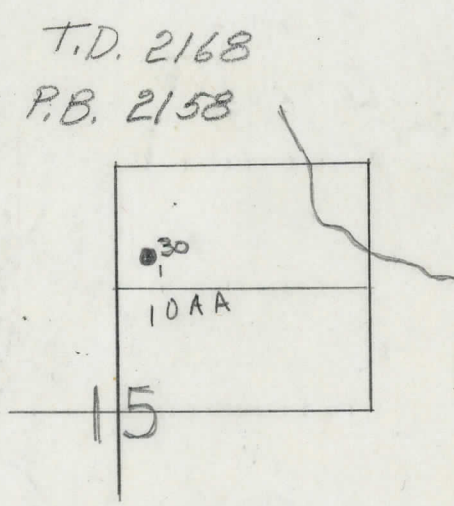
THE PURE OIL COMPANY
LOCATION REPORT

Date June 1, 1944 A.F.E. No. _____
 Division M. ch. Producing District _____ Lease Geo. Stolliker
Geo. Stolliker
 Acres _____ Lease No. _____ Elevation _____ Well No. 1 (Serial No. 30)
 Quadrangle SW-NW-NE Sec. 15 Twp. 30 N Rge. 3 E Twp. Avery
SW NW NE 15 30 N 3 E Avery
 Survey _____ County Montmorency State Michigan
 Operator Geo. Stevens Map Avery Township, Montmorency County

		Feet from North Line of Lease
		" " East " " "
<u>330</u>	<u>330</u>	" " South " " "
<u>330</u>	<u>330</u>	" " West " " "
<u>990</u>	<u>990</u>	Feet from North Line of Section
		" " East " " "
		" " South " " "
<u>330</u>	<u>330</u>	" " West " " "

LEGEND

- Location
- ☀ Gas Well
- Oil Well
- ☀ Gas - Distillate Well
- or ○ Dry Hole
- Dry Showing Oil
- ☀ Dry Showing Gas
- ⊗ Abandoned Location
- ☀ or ☀ Abandoned Gas Well
- or ● Abandoned Oil Well
- or ○ Input Well



Remarks: _____ Scale _____

Submitted by EN Civil Engineer Approved by _____ Division Manager

Approved by _____ Vice-President - General Manager