



Western Michigan University
ScholarWorks at WMU

Legacy Scout Tickets from Pure Oil Company

8-20-2021

MGRRE_PureOilScoutTickets_Cihak, G._1_21121000200000

MGRRE

Western Michigan University

Follow this and additional works at: <https://scholarworks.wmich.edu/pure>



Part of the Geology Commons

WMU ScholarWorks Citation

MGRRE, "MGRRE_PureOilScoutTickets_Cihak, G._1_21121000200000" (2021). *Legacy Scout Tickets from Pure Oil Company*. 6874.

<https://scholarworks.wmich.edu/pure/6874>

This Document is brought to you for free and open access via ScholarWorks at WMU. It has been accepted for inclusion in Legacy Scout Tickets from Pure Oil Company by an authorized administrator of ScholarWorks at WMU. See the National Digital Catalogue - Science Base Catalogue for more collections submitted by MGRRE.



MGRRE_PureOilScoutTickets_Cihak, G._1_21121000200000

API 21121000200000

Permit Number 20

Lease Name Cihak, G.

Well Number 1

County Muskegon

Township 10N

Range 16W

Section 3

2021 DEQ or Pure co_name Johnson O I L Refining Company

Pure Number 11

Latitude 43.27866

Longitude -86.20065

THE PURE OIL COMPANY
THE PURE OIL COMPANY
LOCATION REPORT

DATE 8-8-34

No. _____

DATE 8-8-34

STATE Mich

COUNTY Muskegon

DIST. Muskegon

TWP. Muskegon

SEC. 3

TOWN 10N

RANGE 16W

WELL No. 1 (SERIAL No. 11) FARM Grace B. Cihak ACRES _____

NAME OF STREAM OR WATERS _____

QUADRANGLE _____

OPERATOR Johnson Oil Company

MAP Muskegon Township, Muskegon County

Johnson Oil Co.

Feet from North Line of Farm

300 300 " " East " " "

300 300 " " South " " "

300 300 " " West " " "

Feet from North Line of Section

4260 4260 " " East " " "

4260 4260 " " South " " "

750 750 " " West " " "

LEGEND

○ LOCATION

① RIG

⊕ DRILLING

⊗ GAS WELL

● OIL WELL

⬮ SMALL OIL WELL

⬮ DRY HOLE

⬮ DRY SHOWING OIL

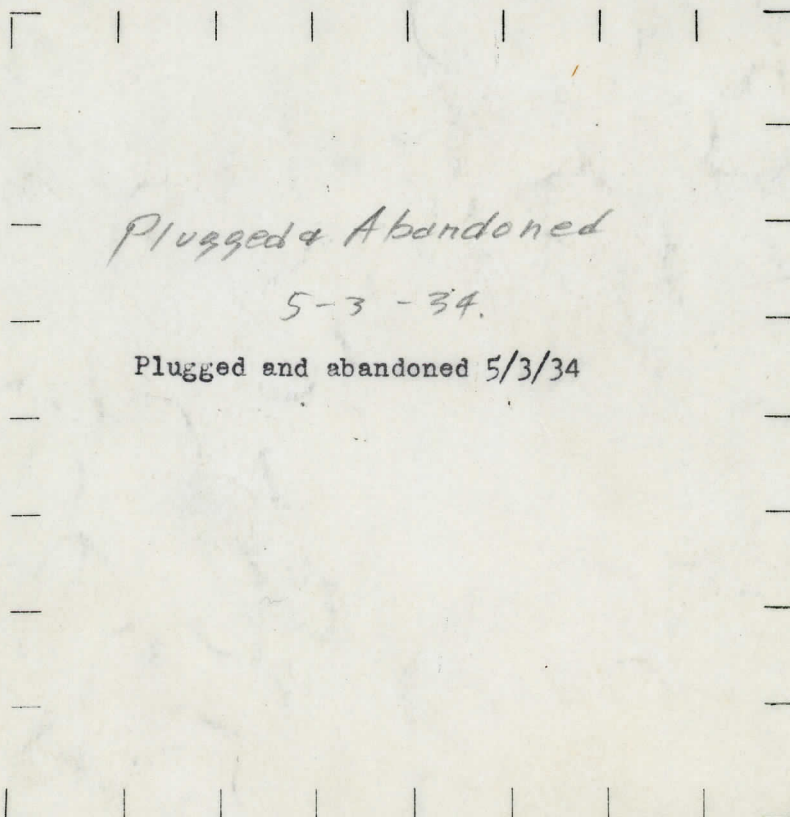
⬮ DRY SHOWING GAS

⬮ ABANDONED LOCATION

⬮ ABANDONED GAS WELL

⬮ ABANDONED OIL WELL

NOTE: Below make tracing from map, (when no map is obtainable make sketch) showing farm, center of section, this location with measurements and also wells, dry holes, or other locations in the vicinity of this location. Make copy to keep for reference and send original to Columbus office.



REMARKS:

SIGNED

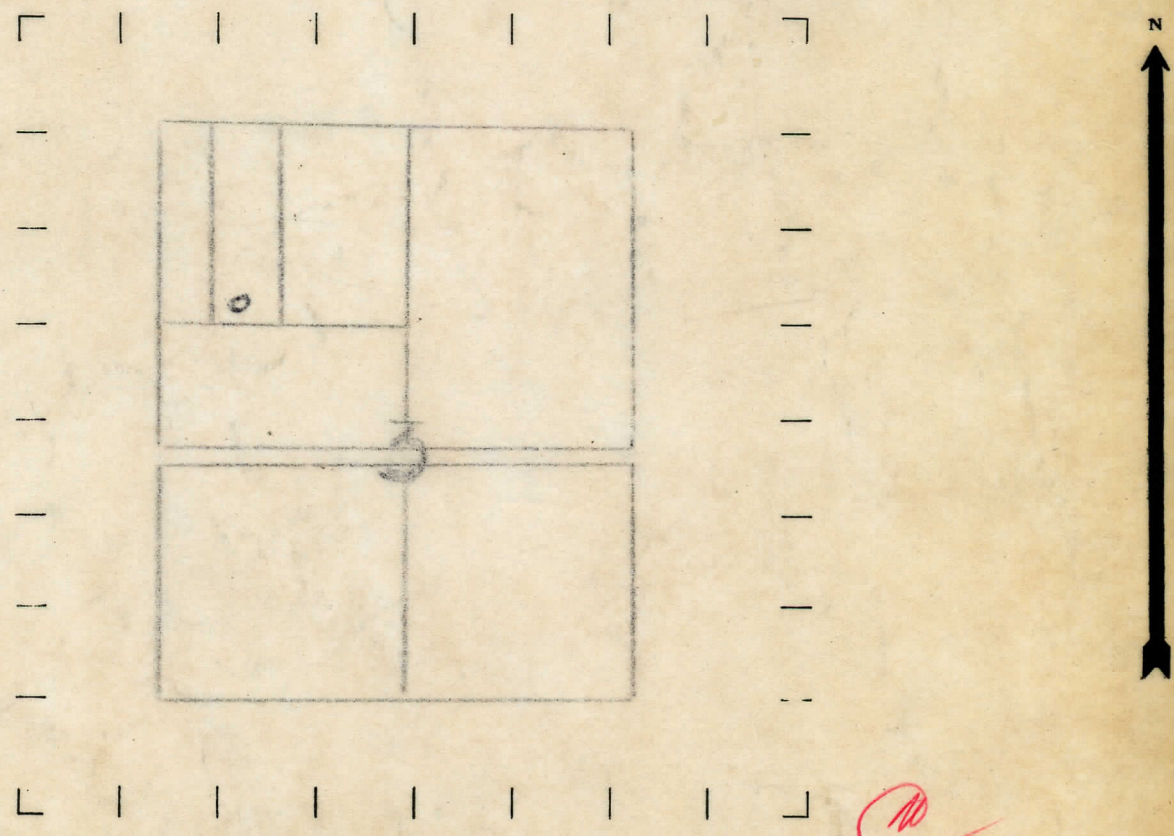
R. L. Yeager
Superintendent or Foreman.

STATE Michigan COUNTY Muskegon DIST. Muskegon SEC. 3 TOWN 10N RANGE 16W
 WELL No. -I- (SERIAL No. 11) FARM Grace B. Cihak 40 ACRES
 NAME OF STREAM OR WATERS _____ QUADRANGLE _____
 OPERATOR Johnson Oil Co MAP Muskegon Twp. Muskegon Co.

Feet from North Line of Farm
 " " East " " "
300 " " South " " "
300 " " West " " "
 Feet from North Line of Section
 " " East " " "
4260 " " South " " "
750 " " West " " "

- LEGEND**
- ✓ ○ LOCATION
 - ① RIG
 - ⊕ DRILLING
 - ⊗ GAS WELL
 - OIL WELL
 - ⬮ SMALL OIL WELL
 - ⬮ DRY HOLE
 - ⬮ DRY SHOWING OIL
 - ⬮ DRY SHOWING GAS
 - ⬮ ABANDONED LOCATION
 - ⬮ ABANDONED GAS WELL
 - ⬮ ABANDONED OIL WELL

NOTE: Below make tracing from map, (when no map is obtainable make sketch) showing farm, center of section, this location with measurements and also wells, dry holes, or other locations in the vicinity of this location. Make copy to keep for reference and send original to Chicago office.



REMARKS: Hagen & Hagen - Contractors.
Building rig

SIGNED _____
 Superintendent or Foreman.

TO

FROM

Refer to _____

Division _____

Place _____

Place _____

Subject _____

Date _____

JOHNSON OIL CO. CIHAK #1.
 LOCATION NW $\frac{1}{4}$ of NW $\frac{1}{4}$ of Section 3. T10 N R 16 W.
 Elevation 647' above sea level.

| FORMATION. FEET. | THICKNESS. FEET. | DEPTH. FEET. |
|-------------------------|---------------------|-----------------|
| Glacial drift. | 375' | 375' |
| Grey shale | 310' | 685' |
| Grey shaly lime. | 28' | 713' |
| Grey calcareous shale | 239' | 952' |
| Red " " | 7' | 959' |
| " shaly lime | 9' | 968' |
| Grey calcareous shale. | 332' | 1300' |
| Grey mixed lime | 21' | 1321' |
| Grey & buff mixed lime. | 7' | 1328' |
| Grey calcareous shale. | 192' | 1520' |
| Black calcareous shale. | 195' | 1715' |
| Grey lime | 10' | 1725' |
| Grey calcareous shale. | 48' | 1773' |
| Dark lime, Grey. | 10' | 1783' |
| Light buff porous lime | 7' | 1790' |
| No sample | 5' | 1795' |

HOLE FULL OF WATER AT 1790'.

DATE Mar. 17th 1928.

COMPLETION RECORD

No. 11STATE Michigan COUNTY Muskegon DIST. TWP. Muskegon SEC. 3 TOWN 10N RANGE 16 WWELL No. 1 (SERIAL No. 11) Farm Grace B. Cilak ACRES

NAME OF STREAM OR WATERS QUADRANGLE

OPERATOR Johnson Oil Co. MAP Muskegon To Muskegon Co.LOCATION REPORT SENT IN (DATE) Feb. 4th 1928.WELL STARTED (DATE) Feb. 4th 1928 WELL COMPLETED (DATE) March. 17th 1928.~~OK WELL~~~~OK WELL~~

DRY HOLE

~~ABANDONED WELL~~

CROSS OUT THREE OF THE ABOVE

WELL RECORD

DATE OF SHOT NUMBER OF QUARTS

1st 24 HOURS PRODUCTION BARRELS OR FEET

2nd " " " " " "

3rd " " " " " "

4th " " " " " "

5th " " " " " "

SAND AND CASING

| CASING SIZE | WEIGHT | CASING Feet Inches | SAND Name and Nature | TOP | BOTTOM | TOP PAY | BOTTOM PAY | SALT WATER |
|-------------|--------|-----------------------|-------------------------|------|--------|-------------|------------|------------|
| 14" | | 270 | Drift | -0- | 330 | Slate | 1080 | 1145 |
| 10" | | 350 | Slate | 330 | 665 | Lime | 1145 | 1170 |
| | | | Lime | 665 | 710 | Slate | 1170 | 1200 |
| | | | Lime shells | 710 | 785 | Sand | 1328 | 1328 |
| | | | Shale | 785 | 795 | Lime | 1328 | 1400 |
| | | | Shells | 795 | 820 | Shale | 1400 | 1773 |
| | | | Lime | 820 | 885 | Traverse | 1773 | 1795 Water |
| | | | Slate | 885 | 955 | Total depth | | 1795ft. |
| | | | Lime (Red) | 955 | 985 | | | |
| | | | Slate | 985 | 1000 | | | |
| | | | Lime | 1000 | 1035 | | | |
| | | | Slate | 1035 | 1065 | | | |
| | | | Lime | 1065 | 1080 | | | |

REMARKS

NOTE:—MAKE COPY TO KEEP FOR REFERENCE AND SEND ORIGINAL TO COLUMBUS OFFICE. LIST MATERIAL CHARGEABLE TO WELL ON OTHER SIDE.

SIGNED

SUPT. OR FOREMAN.