



Western Michigan University
ScholarWorks at WMU

Legacy Scout Tickets from Pure Oil Company

8-20-2021

**MGRRE_PureOilScoutTickets_Becker
Brothers_1_21121001430000**

MGRRE
Western Michigan University

Follow this and additional works at: <https://scholarworks.wmich.edu/pure>



Part of the Geology Commons

WMU ScholarWorks Citation

MGRRE, "MGRRE_PureOilScoutTickets_Becker Brothers_1_21121001430000" (2021). *Legacy Scout Tickets from Pure Oil Company*. 6876.
<https://scholarworks.wmich.edu/pure/6876>

This Document is brought to you for free and open access via ScholarWorks at WMU. It has been accepted for inclusion in Legacy Scout Tickets from Pure Oil Company by an authorized administrator of ScholarWorks at WMU. See the National Digital Catalogue - Science Base Catalogue for more collections submitted by MGRRE.



MGRRE_PureOilScoutTickets_Becker Brothers_1_21121001430000

API 21121001430000

Permit Number 143

Lease Name Becker Brothers

Well Number 1

County Muskegon

Township 10N

Range 16W

Section 4

2021 DEQ or Pure co_name Muskegon Oil Corporation

Pure Number 13

Latitude 43.28222

Longitude -86.22299

THE PURE OIL COMPANY

COMPLETION RECORD

DATE Oct. 20th 1928 No. 13STATE Michigan COUNTY Macquoket DIST. TWP. Macquoket SEC. 4 TOWN 101 RANGE 10WELL No. 1 (SERIAL No. 15) FARM Bocher Bros ACRES

NAME OF STREAM OR WATERS QUADRANGLE

OPERATOR Citizens Petroleum Co. MAP Macquoket Twp. Macquoket Co.LOCATION REPORT SENT IN (DATE) Feb. 4th 1928WELL STARTED (DATE) Feb. 4th 1928 WELL COMPLETED (DATE) Oct. 20th 1928

OIL WELL

GAS WELL

DRY HOLE

ABANDONED WELL

CROSS OUT THREE OF THE ABOVE
WELL RECORD

DATE OF SHOT NUMBER OF QUARTS

1st 24 HOURS PRODUCTION BARRELS OR FEET

2nd " " " " " "

3rd " " " " " "

4th " " " " " "

5th " " " " " "

SAND AND CASING

CASING SIZE	WEIGHT	CASING Feet Inches	SAND Name and Nature	TOP	BOTTOM	TOP PAY	BOTTOM PAY	SALT WATER
			No Sample	615	615			
			Grey shale Dolomitic limestone	615	640			
			Grey calcareous shale	640	660			
			Grey shale	660	680			
			Grey calcareous shale	680	690			
			Soft grey shale	690	690			
			Red shaly limestone	690	910			
			Soft grey shale	910	1040			
			Grey calcareous shale	1040	1090			
			Grey shale	1090	1230			
			Grey calcareous shale some dolomite	1230	1300			
			Grey shale	1300	1440			
			Dark grey shale	1440	1465			
			Black carbonaceous shale	1465	1640			
			Grey calcareous shale	1640	1685			

REMARKS	TOP	BOTTOM	TRANSFER NUMBER	SIZE
Grey dolomitic lime	1685	1700		
Light buff limestone	1700	1815		
Dark black limestone	1815	1860		
Light buff or white limestone	1860	1925		
Dark black or brown limestone	1925	1970		
Brown limestone	1970	2025		

no casing record

NOTE:—MAKE COPY TO KEEP FOR REFERENCE AND SEND ORIGINAL TO CHICAGO OFFICE. LIST MATERIAL CHARGEABLE TO WELL ON OTHER SIDE.

SIGNED

SUPT. OR FOREMAN

DATE July 11, 1920

STATE Michigan COUNTY Mustkegon DIST. Mustkegon SEC. 4 TOWN 10N RANGE 16W

WELL No. 1 (SERIAL No. 13) FARM Becker Bros ACRES 120

NAME OF STREAM OR WATERS _____ QUADRANGLE _____

OPERATOR Citizen Petroleum Co MAP Mustkegon Tp Mustkegon Co

LIST OF MATERIAL CHARGEABLE TO WELL No. _____

Feet from North Line of Farm

“ “ East “ “ “

“ “ South “ “ “

“ “ West “ “ “

Feet from North Line of Section

“ “ East “ “ “

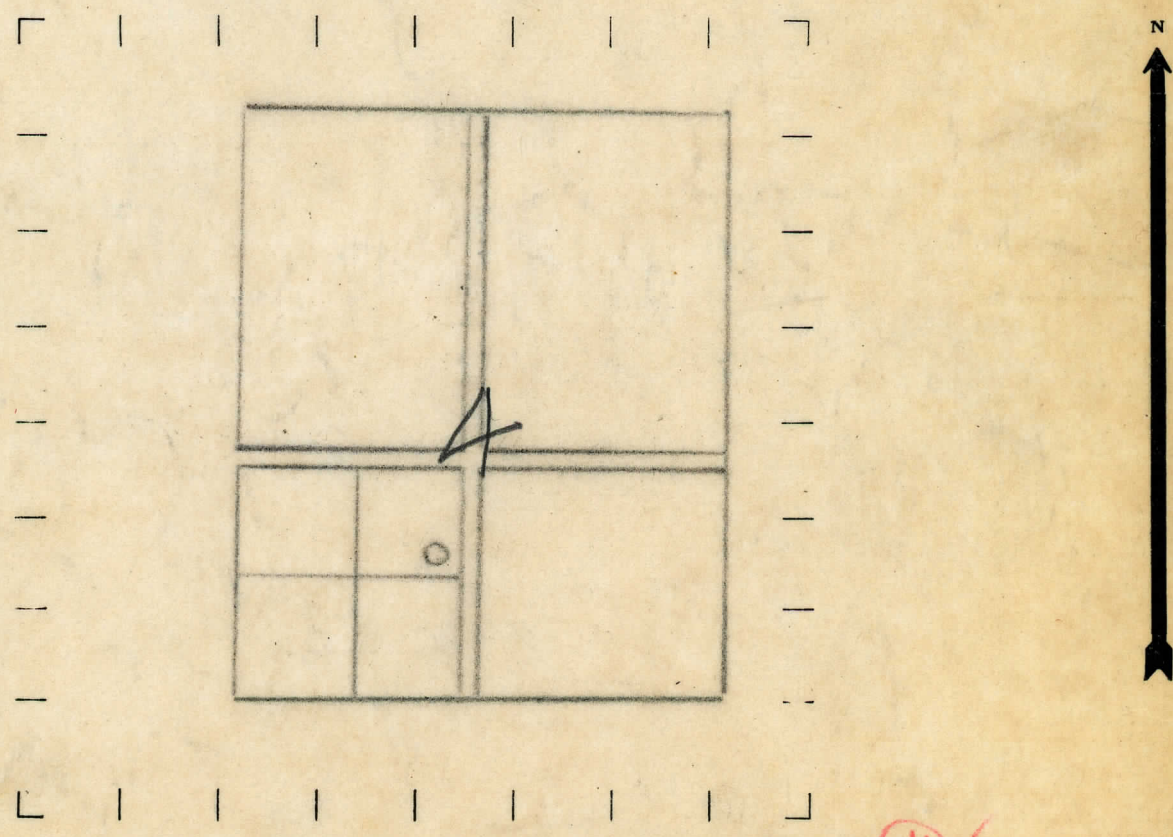
“ “ South “ “ “

“ “ West “ “ “

- LEGEND**

 - LOCATION
 - ① RIG
 - ⊕ DRILLING
 - ⊙ GAS WELL
 - OIL WELL
 - ⦿ SMALL OIL WELL
- ⦿ DRY HOLE
 - ⦿ DRY SHOWING OIL
 - ⦿ DRY SHOWING GAS
 - ⦿ ABANDONED LOCATION
 - ⦿ ABANDONED GAS WELL
 - ⦿ ABANDONED OIL WELL

NOTE: Below make tracing from map, (when no map is obtainable make sketch) showing farm, center of section, this location with measurements and also wells, dry holes, or other locations in the vicinity of this location. Make copy to keep for reference and send original to Chicago office.



REMARKS:

SIGNED _____

Superintendent or Foreman.

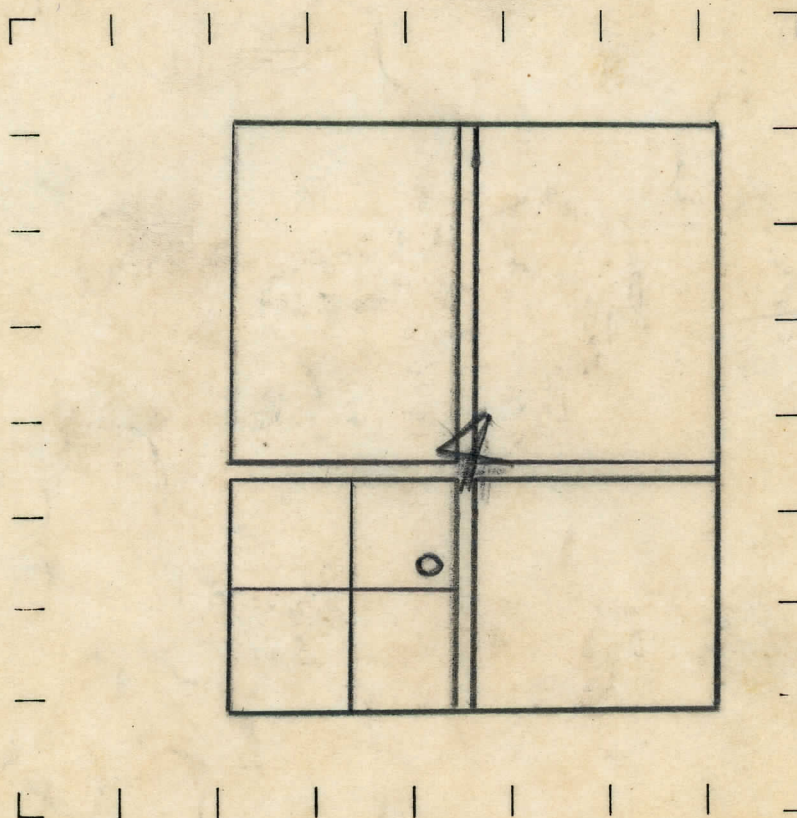
STATE Michigan COUNTY Muskegon DIST. 4 SEC. 4 TOWN 16N RANGE 16W
 WELL No. 4 (SERIAL No. 13) FARM Becker Bros. ACRES 120
 NAME OF STREAM OR WATERS _____ QUADRANGLE _____
 OPERATOR Muskegon Oil Co. MAP Muskegon Twp. Muskegon Co.

_____ Feet from North Line of Farm
1000 " " East " " "
300 " " South " " "
 " " West " " "
 _____ Feet from North Line of Section
 " " East " " "
1690 " " South " " "
2340 " " West " " "

LEGEND

- | | |
|------------------|----------------------|
| ✓ ○ LOCATION | ⊕ DRY HOLE |
| ① RIG | ◆ DRY SHOWING OIL |
| ⊕ DRILLING | ⊙ DRY SHOWING GAS |
| ⊗ GAS WELL | ⊖ ABANDONED LOCATION |
| ● OIL WELL | ⊗ ABANDONED GAS WELL |
| ⬮ SMALL OIL WELL | ⬮ ABANDONED OIL WELL |

NOTE: Below make tracing from map, (when no map is obtainable make sketch) showing farm, center of section, this location with measurements and also wells, dry holes, or other locations in the vicinity of this location. Make copy to keep for reference and send original to Chicago office.



REMARKS:

Gray Drilling Co - Contractors.
Building rig

SIGNED

W. H. Henders
 Superintendent or Foreman.

No. 13

SUPT. OR FOREMAN

DESCRIPTION	QUANTITY	MAKE	SIZE	MATERIAL
-------------	----------	------	------	----------

SUMMARY OF DRILLING WELLS

MICHIGAN SPECIAL.

Production Division

Date October 20, 1928. 122

NAME OF LEASE	Autho. No.	Well No.	DEPTH		FORMATION	REMARKS
			From	To		