



Western Michigan University  
ScholarWorks at WMU

---

Legacy Scout Tickets from Pure Oil Company

---

8-20-2021

## MGRRE\_PureOilScoutTickets\_Burns\_1\_unk

MGRRE

*Western Michigan University*

Follow this and additional works at: <https://scholarworks.wmich.edu/pure>



Part of the Geology Commons

---

### WMU ScholarWorks Citation

MGRRE, "MGRRE\_PureOilScoutTickets\_Burns\_1\_unk" (2021). *Legacy Scout Tickets from Pure Oil Company*. 6880.

<https://scholarworks.wmich.edu/pure/6880>

This Document is brought to you for free and open access via ScholarWorks at WMU. It has been accepted for inclusion in Legacy Scout Tickets from Pure Oil Company by an authorized administrator of ScholarWorks at WMU. See the National Digital Catalogue - Science Base Catalogue for more collections submitted by MGRRE.



---

## MGRRE\_PureOilScoutTickets\_Burns\_1\_unk

API unk

Permit Number unk

Lease Name Burns

Well Number 1

County Muskegon

Township 10N

Range 16W

Section 5

2021 DEQ or Pure co\_name Bradley & Son

Pure Number 17

Latitude 43.2867509

Longitude -86.2333778

DATE Feb 18th 1928

## LOCATION REPORT

Mustkegon Co. No. 17STATE Michigan COUNTY Mustkegon DIST. TWP. Mustkegon SEC. 5 TOWN 10N RANGE 10W  
PREC. \_\_\_\_\_WELL No. 1 (SERIAL No. 17) FARM BURNS 165 ACRES

NAME OF STREAM OR WATERS \_\_\_\_\_ QUADRANGLE \_\_\_\_\_

OPERATOR Bradley & Son MAP Mustkegon Tp. Mustkegon Co.

Feet from North Line of Farm

80 " " East " " "300 " " South " " "

" " West " " "

Feet from North Line of Section

80 " " East " " "300 " " South " " "

" " West " " "

LEGEND

○ LOCATION

① RIG

⊕ DRILLING

⊗ GAS WELL

● OIL WELL

⬮ SMALL OIL WELL

⬮ DRY HOLE

⬮ DRY SHOWING OIL

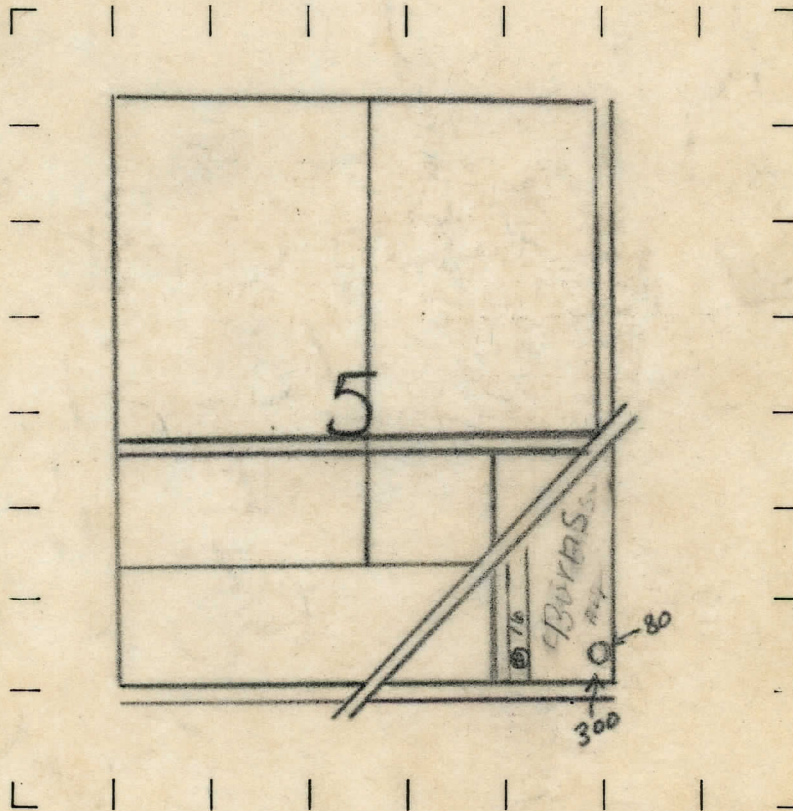
⬮ DRY SHOWING GAS

⬮ ABANDONED LOCATION

⬮ ABANDONED GAS WELL

⬮ ABANDONED OIL WELL

NOTE: Below make tracing from map, (when no map is obtainable make sketch) showing farm, center of section, this location with measurements and also wells, dry holes, or other locations in the vicinity of this location. Make copy to keep for reference and send original to Chicago office.



REMARKS:

SIGNED

Superintendent or Foreman.



**SUPT. OR FOREMAN**