



Western Michigan University
ScholarWorks at WMU

Legacy Scout Tickets from Pure Oil Company

8-20-2021

MGRRE_PureOilScoutTickets_Becker, A._1_21121000510000

MGRRE

Western Michigan University

Follow this and additional works at: <https://scholarworks.wmich.edu/pure>



Part of the Geology Commons

WMU ScholarWorks Citation

MGRRE, "MGRRE_PureOilScoutTickets_Becker, A._1_21121000510000" (2021). *Legacy Scout Tickets from Pure Oil Company*. 6899.

<https://scholarworks.wmich.edu/pure/6899>

This Document is brought to you for free and open access via ScholarWorks at WMU. It has been accepted for inclusion in Legacy Scout Tickets from Pure Oil Company by an authorized administrator of ScholarWorks at WMU. See the National Digital Catalogue - Science Base Catalogue for more collections submitted by MGRRE.



MGRRE_PureOilScoutTickets_Becker, A._1_21121000510000

API 21121000510000

Permit Number 51

Lease Name Becker, A.

Well Number 1

County Muskegon

Township 10N

Range 16W

Section 4

2021 DEQ or Pure co_name Dixie Oil Company

Pure Number 36

Latitude 43.27855

Longitude -86.21753

Corrected Location Report

THE PURE OIL COMPANY

DATE

LOCATION REPORT

No.

STATE

COUNTY

DIST
TWP.
PREC.

SEC.

TOWN

RANGE

WELL No.

(SERIAL No.) FARM

ACRES

NAME OF STREAM OR WATERS

QUADRANGLE

OPERATOR

MAP

Feet from North Line of Farm

" " East " " "

300

" " South " " "

250

" " West " " "

Feet from North Line of Section

" " East " " "

" " South " " "

" " West " " "

LEGEND

O LOCATION

① RIG

⊕ DRILLING

⊗ GAS WELL

● OIL WELL

⬮ SMALL OIL WELL

⬮ DRY HOLE

⬮ DRY SHOWING OIL

⬮ DRY SHOWING GAS

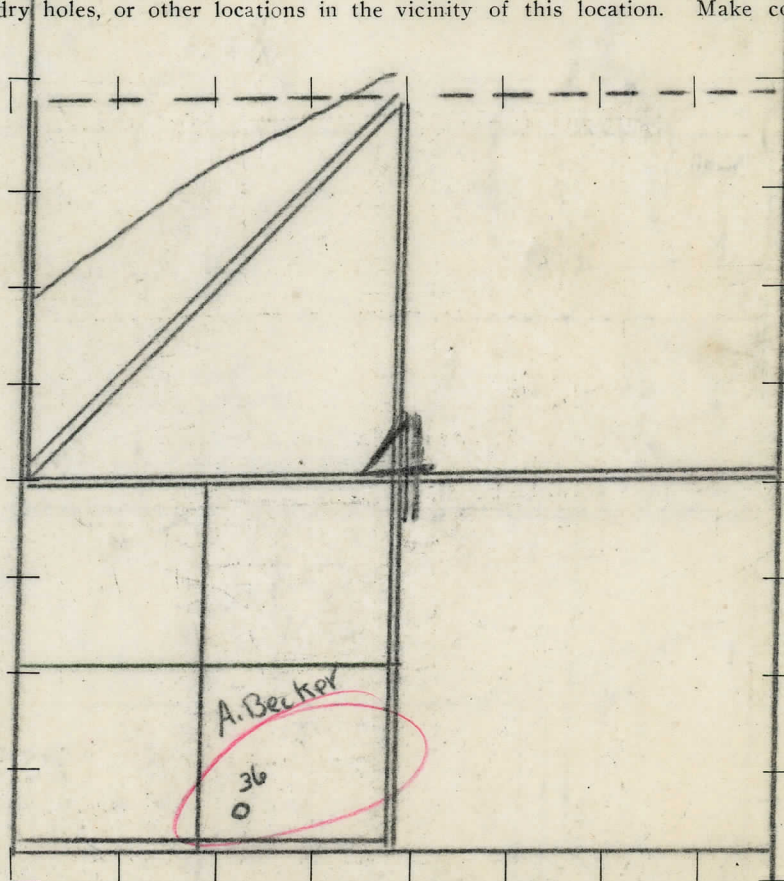
⬮ ABANDONED LOCATION

⬮ ABANDONED GAS WELL

⬮ ABANDONED OIL WELL

NOTE: Below make tracing from map (when no map is obtainable make sketch), showing farm, center of section, this location with measurements and also wells, dry holes, or other locations in the vicinity of this location. Make copy to keep for reference and send original to Columbus office.

Elevation
634-7
==



REMARKS:

SIGNED

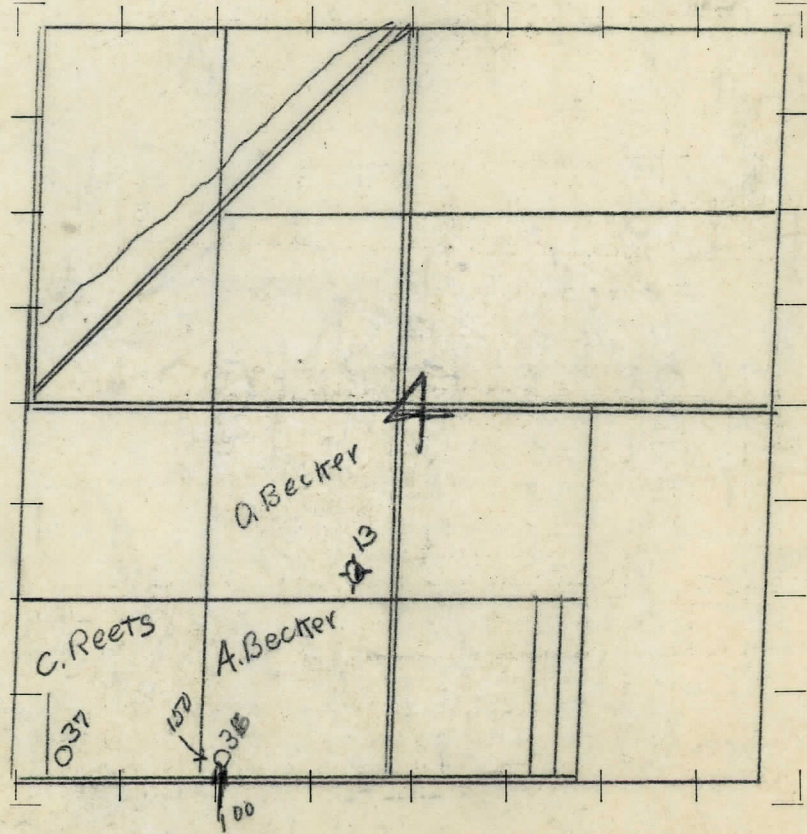
Superintendent or Foreman.

Feet from North Line of Farm
 " " East " " "
100 " " South " " "
150 " " West " " "
 Feet from North Line of Section
 " " East " " "
 " " South " " "
 " " West " " "

- LEGEND**
- LOCATION
 - ① RIG
 - ⊕ DRILLING
 - ⊙ GAS WELL
 - OIL WELL
 - ⦿ SMALL OIL WELL
 - ⊙ DRY HOLE
 - ⦿ DRY SHOWING OIL
 - ⊙ DRY SHOWING GAS
 - ⦿ ABANDONED LOCATION
 - ⊙ ABANDONED GAS WELL
 - ⦿ ABANDONED OIL WELL

NOTE: Below make tracing from map (when no map is obtainable make sketch), showing farm, center of section, this location with measurements and also wells, dry holes, or other locations in the vicinity of this location. Make copy to keep for reference and send original to Columbus office.

Elevation
634.7
 584



REMARKS:

SIGNED
 Superintendent or Foreman.

