



Western Michigan University
ScholarWorks at WMU

Legacy Scout Tickets from Pure Oil Company

8-20-2021

MGRRE_PureOilScoutTickets_Burns_1_21121000710000

MGRRE

Western Michigan University

Follow this and additional works at: <https://scholarworks.wmich.edu/pure>



Part of the Geology Commons

WMU ScholarWorks Citation

MGRRE, "MGRRE_PureOilScoutTickets_Burns_1_21121000710000" (2021). *Legacy Scout Tickets from Pure Oil Company*. 6920.

<https://scholarworks.wmich.edu/pure/6920>

This Document is brought to you for free and open access via ScholarWorks at WMU. It has been accepted for inclusion in Legacy Scout Tickets from Pure Oil Company by an authorized administrator of ScholarWorks at WMU. See the National Digital Catalogue - Science Base Catalogue for more collections submitted by MGRRE.



MGRRE_PureOilScoutTickets_Burns_1_21121000710000

API 21121000710000

Permit Number 71

Lease Name Burns

Well Number 1

County Muskegon

Township 10N

Range 16W

Section 4

2021 DEQ or Pure co_name Goldboss, Kelley

Pure Number 57

Latitude 43.27789

Longitude -86.20401

Corrected Location Report

THE PURE OIL COMPANY

DATE *Sept 22nd 1928*LOCATION REPORTNo. *57*STATE *Michigan* COUNTY *Muskegon* DIST TWP *Muskegon* SEC *5* TOWN *10 N* RANGE *16 W*
WELL No. *1* (SERIAL No. *57*) FARM *W. Burns* ACRES

NAME OF STREAM OR WATERS _____ QUADRANGLE _____

OPERATOR *Kelly - Goldboss Co* MAP *Muskegon Tp. Muskegon Co.*

Feet from North Line of Farm

" " East " " "

" " South " " "

" " West " " "

Feet from North Line of Section

" " East " " "

" " South " " "

" " West " " "

LEGEND

○ LOCATION

① RIG

⊕ DRILLING

⊗ GAS WELL

● OIL WELL

⦿ SMALL OIL WELL

⦿ DRY HOLE

⦿ DRY SHOWING OIL

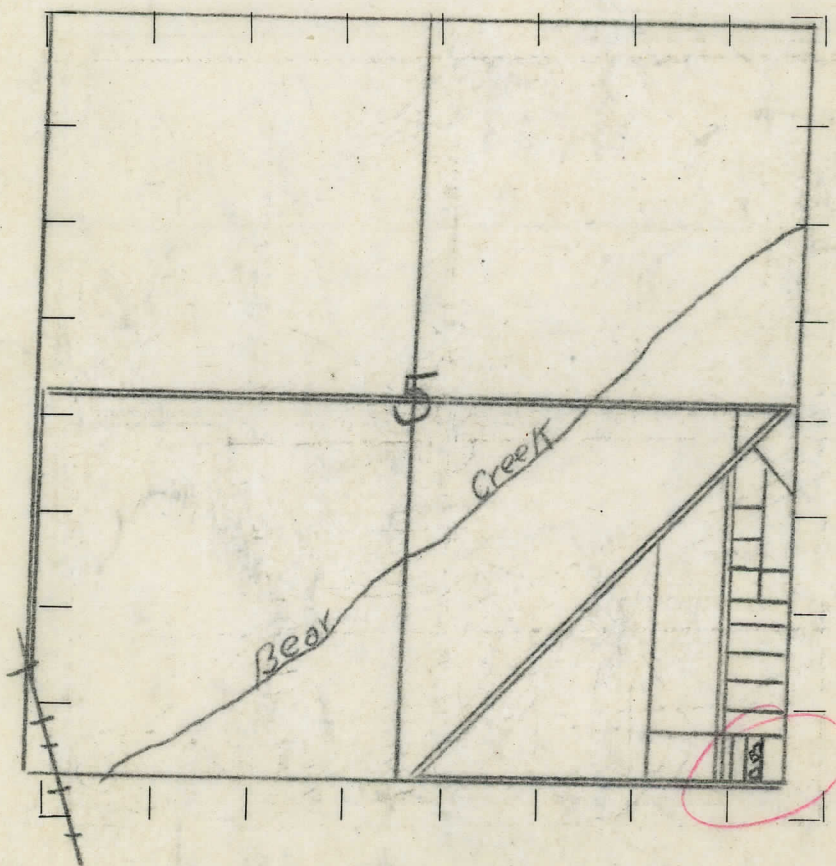
⦿ DRY SHOWING GAS

⦿ ABANDONED LOCATION

⦿ ABANDONED GAS WELL

⦿ ABANDONED OIL WELL

NOTE: Below make tracing from map (when no map is obtainable make sketch), showing farm, center of section, this location with measurements and also wells, dry holes, or other locations in the vicinity of this location. Make copy to keep for reference and send original to Columbus office.



REMARKS:

SIGNED

Superintendent or Foreman.

WELL No. 1 (SERIAL No. 57) FARM W. Burns ACRES

NAME OF STREAM OR WATERS _____ QUADRANGLE _____

OPERATOR Kelly - Goldboss CO. MAP Muskegon Twp. Muskegon Co.

LOCATION REPORT SENT IN (DATE) Sep. 22nd 1928

WELL STARTED (DATE) Sept. 22nd 1928 WELL COMPLETED (DATE) Jan. 28th 1929

ABANDONED WELL

**CROSS OUT THREE OF THE ABOVE
WELL RECORD**

[illegible]

1st 24 HOURS PRODUCTION _____ BARRELS OR FEET

[illegible]

3rd " " " " " "

[illegible]

5th " " "

SAND AND CASING

[illegible][illegible]