



Western Michigan University
ScholarWorks at WMU

Legacy Scout Tickets from Pure Oil Company

8-20-2021

**MGRRE_PureOilScoutTickets_Citizens and Lakeshore (a.k.a.
Nichols, J B)_1_21121000930000**

MGRRE
Western Michigan University

Follow this and additional works at: <https://scholarworks.wmich.edu/pure>



Part of the Geology Commons

WMU ScholarWorks Citation

MGRRE, "MGRRE_PureOilScoutTickets_Citizens and Lakeshore (a.k.a. Nichols, J B)_1_21121000930000" (2021). *Legacy Scout Tickets from Pure Oil Company*. 6933.
<https://scholarworks.wmich.edu/pure/6933>

This Document is brought to you for free and open access via ScholarWorks at WMU. It has been accepted for inclusion in Legacy Scout Tickets from Pure Oil Company by an authorized administrator of ScholarWorks at WMU. See the National Digital Catalogue - Science Base Catalogue for more collections submitted by MGRRE.



MGRRE_PureOilScoutTickets_Citizens and Lakeshore (a.k.a. Nichols, J
B)_1_21121000930000

API 21121000930000

Permit Number 93

Lease Name Citizens and Lakeshore (a.k.a. Nichols, J B)

Well Number 1

County Muskegon

Township 10N

Range 16W

Section 8

2021 DEQ or Pure co_name Citizens and Lakeshore Petroleum Company

Pure Number 70

Latitude 43.27183

Longitude -86.23433

DATE _____

LOCATION REPORT

No. 70

STATE

STATE Michigan COUNTY Washtenaw TWP. Washtenaw SEC. 8 TOWN 10th RANGE 16th

WELL No. 1 (SERIAL No. 10) FARM 229 Nichols ACRES

NAME OF STREAM OR WATERS

QUADRANGLE

OPERATOR

MAP

Feet from North Line of Farm

224

“ “ East “ “ “

280

“ “ South “ “ “

“ “ West “ “ “

Feet from North Line of Section

“ “ East “ “ “

“ “ South “ “ “


“ “ West “ “ “

LEGEND

○ LOCATION


① RIG

⊕ DRILLING

 GAS WELL

● OIL WELL

● SMALL OIL WELL

 DRY HOLE

✚ DRY SHOWING OIL

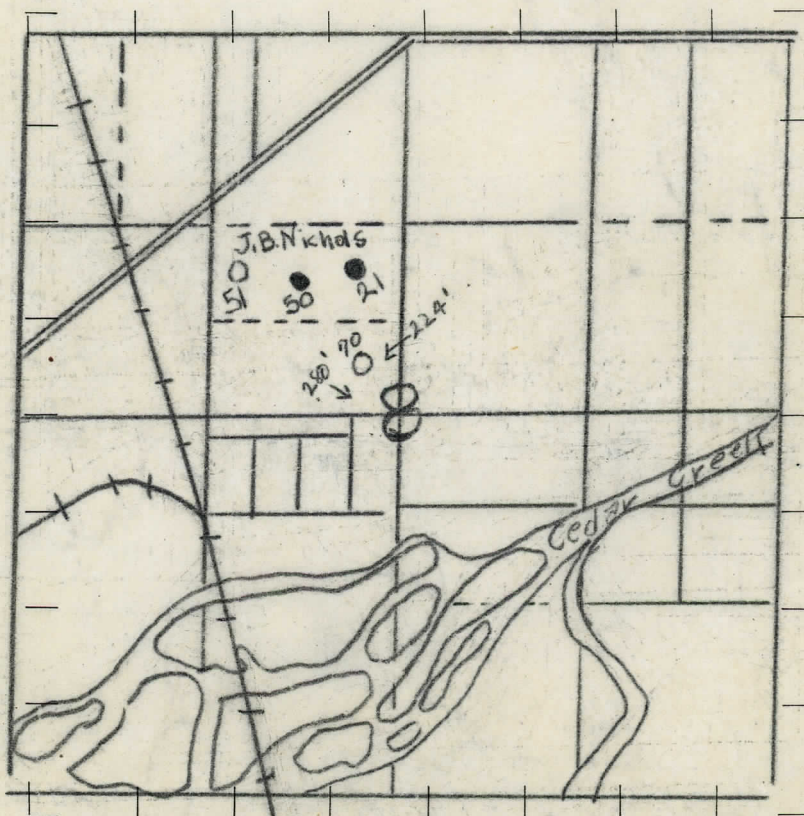
⚙️ DRY SHOWING GAS

ABANDONED LOCATION

ABANDONED GAS WELL

ABANDONED OIL WELL

NOTE: Below make tracing from map (when no map is obtainable make sketch), showing farm, center of section, this location with measurements and also wells, dry holes, or other locations in the vicinity of this location. Make copy to keep for reference and send original to Columbus office.



REMARKS:

SIGNED

Superintendent or Foreman.

COMPLETION RECORD

DATE Oct. 20th 1928

No. 70

STATE Michigan COUNTY Muskegon DIST. Muskegon SEC. 8 TOWN 10N RANGE 16W

WELL No. 1 (SERIAL No. 70) FARM J.B. Nichols ACRES

NAME OF STREAM OR WATERS QUADRANGLE

OPERATOR Citizens Pet. Co. MAP Muskegon Twp. Muskegon Co.

LOCATION REPORT SENT IN (DATE) July 14th 1928

WELL STARTED (DATE) July 14th 1928 WELL COMPLETED (DATE) Oct. 20th 1928

OIL WELL

XXX GAS WELL XXX

XXX DRY HOLE XXX

XXX ABANDONED WELL XXX

CROSS OUT THREE OF THE ABOVE
WELL RECORD

DATE OF SHOT NUMBER OF QUARTS

1st 24 HOURS PRODUCTION BARRELS OR FEET

2nd " " " " " "

3rd " " " " " "

4th " " " " " "

5th " " " " " "

SAND AND CASING

CASING SIZE	WEIGHT	CASING Feet Inches	SAND Name and Nature	TOP	BOTTOM	TOP PAY	BOTTOM PAY	SALT WATER
10"		300	Sand	0	50			
8 1/2"		?	Blue sand	50	220			
6 5/8		2026	Water sand	240	290			
			Blue sand	290	570			
			Broken lime	570	640	gas 610		
			Black slate	640	857			
			Red lime	857	880			
			Blue slate	880	1204			
			Crst	1204	1214			
			Blue shale	1214	1585			
			Brown shale	1585	1593			
			Broken lime	1593	1610			
			Grey lime	1610	1620			
			Grey shale	1620	1655			
			Lime	1655	1680			

REMARKS	FEET	FEET	FEET
Show oil & gas	1680	1690	
little water	1690	1860	
Show gas	1860	1865	
Sandy lime some water	1865	1990	
Salt water		1980	
Hard lime	1990	2020	
Grey shale break	2020	2025	
Limey shale	2025	2034 gas 2034	
Total depth		2040 feet.	

NOTE: MAKE COPY TO KEEP FOR REFERENCE AND SEND ORIGINAL TO CHICAGO OFFICE. LIST MATERIAL CHARGEABLE TO WELL ON OTHER SIDE.

SIGNED

SUPT. OR FOREMAN

STYLE	COMPLA	DATE	SEC	LOW	BYNCE
DESCRIPTION	QUANTITY	MAKE	SIZE	MATERIAL	

SUMMARY OF DRILLING WELLS

MICHIGAN SPECIAL

Production Division

Date October 20, 1928. 122

NAME OF LEASE	Autho. No.	Well No.	DEPTH		FORMATION	REMARKS
			From	To		
CITIZENS & LAKE SHORE PETROLEUM COMPANY'S- Location: 400' from South line and 224' from the East Line of SE $\frac{1}{4}$ of the NW $\frac{1}{4}$ of section 8-10-16W. Muskegon county Michigan. Elev. 631.49			0	50	Sand.	#1. OUR #70. Gas at 610.
			50	220	mud, Blue.	
			240	290	Water Sand.	
			290	570	Blue Mud.	
			570	640	Broken Lime.	
			640	857	Black Slate.	
			857	880	Red Lime.	
			880	1204	Blue Slate.	
			1204	1214	Grit.	
			1214	1385	Blue Shale.	
			1385	1593	Brown shale.	
			1593	1610	Broken Lime.	
			1610	1620	Grey Lime.	
			1620	1655	Grey shale.	
			1655	1680	Lime.	
			1680	1690	Show of Oil and Gas.	
			1690	1860	Little water in Lime.	
			1860	1865	show of gas.	
			1865	1990	Sandy water lime.	
			1			
			SALT WATER AT 1980			
			1990	2020	Hard Lime.	
			2020	2025	Grey shale Break.	
			2025	2034	Limey shale (Gas at 2034)	
			TOTAL DEPTH 2040 FEET.			
			CASING RECORD.			
			8 1/2" CASING 300 Feet.			
			6 5/8" Casing 2026 "			