



Western Michigan University  
ScholarWorks at WMU

---

Legacy Scout Tickets from Pure Oil Company

---

8-20-2021

**MGRRE\_PureOilScoutTickets\_Continental\_1\_21121000920000**

MGRRE

*Western Michigan University*

Follow this and additional works at: <https://scholarworks.wmich.edu/pure>



Part of the Geology Commons

---

#### WMU ScholarWorks Citation

MGRRE, "MGRRE\_PureOilScoutTickets\_Continental\_1\_21121000920000" (2021). *Legacy Scout Tickets from Pure Oil Company*. 6935.

<https://scholarworks.wmich.edu/pure/6935>

This Document is brought to you for free and open access via ScholarWorks at WMU. It has been accepted for inclusion in Legacy Scout Tickets from Pure Oil Company by an authorized administrator of ScholarWorks at WMU. See the National Digital Catalogue - Science Base Catalogue for more collections submitted by MGRRE.



---

**MGRRE\_PureOilScoutTickets\_Continental\_1\_21121000920000**

API 21121000920000

Permit Number 92

Lease Name Continental

Well Number 1

County Muskegon

Township 10N

Range 16W

Section 16

2021 DEQ or Pure co\_name Continental Motors Corporation

Pure Number 72

Latitude 43.25716

Longitude -86.2104

## WELL REPORT - OUTSIDE OPERATIONS

SERIAL NO. 72

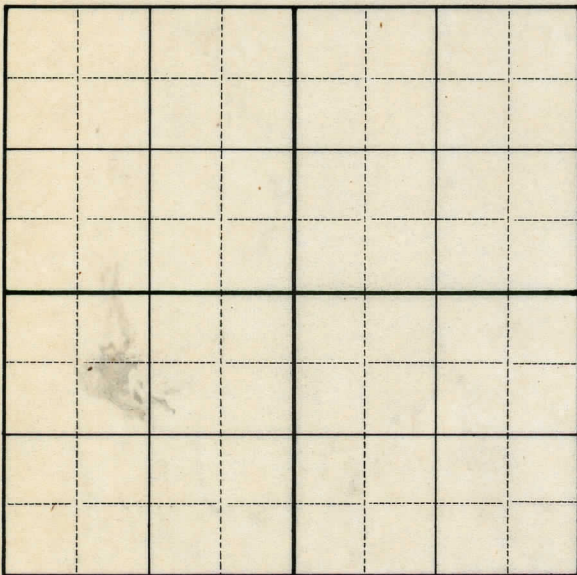
STATE Michigan <sup>PSH</sup> ~~CO.~~ Muskegon  
OPERATOR Continental Motors Corp.  
FARM Continental WELL NO. 1  
TWP. Muskegon S. 16 T. 10N R. 16W  
LOC. SW NE

WILDCAT ☐ FIELD ☐ FIELD NAME \_\_\_\_\_

MAP NO. \_\_\_\_\_ CO-ORD. \_\_\_\_\_ ELEV. \_\_\_\_\_

STATUS Plugged and Abandoned 4-2-48Total Depth ?

NORTH

DATE 5-10-48 SCOUT H. J. G.

THE PURE OIL COMPANY  
LOCATION REPORT

No. 72

DATE 1-19-29

STATE Mich COUNTY Muskegon DIST. Muskegon SEC 16 TOWN 10 N RANGE 16 W  
DATE 1-19-29 PREC.

WELL No. 1 (SERIAL No. 72) FARM Cont. Motors Corp. ACRES

NAME OF STREAM OR WATERS QUADRANGLE

OPERATOR Cont. Motors MAP

Feet from North Line of Farm

" " East " " "

" " South " " "

" " West " " "

Feet from North Line of Section N from E & W 1/4 Line

" " East " " "

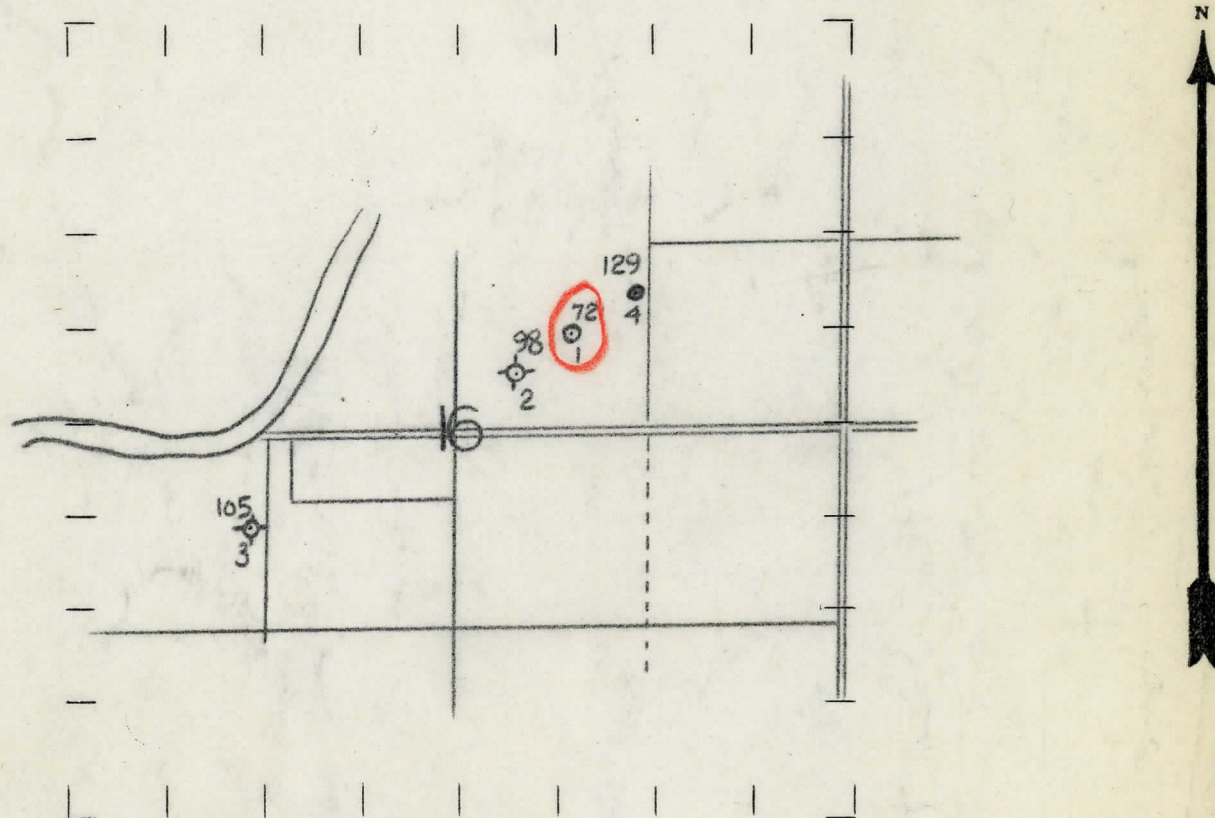
" " South " " "

" " West " " "

LEGEND

- O LOCATION
- ① RIG
- ⊕ DRILLING
- ⊙ GAS WELL
- OIL WELL
- ⬮ SMALL OIL WELL
- ⊙ DRY HOLE
- ⬮ DRY SHOWING OIL
- ⊙ DRY SHOWING GAS
- ⊙ ABANDONED LOCATION
- ⊙ ABANDONED GAS WELL
- ⬮ ABANDONED OIL WELL

NOTE: Below make tracing from map, (when no map is obtainable make sketch) showing farm, center of section, this location with measurements and also wells, dry holes, or other locations in the vicinity of this location. Make copy to keep for reference and send original to Columbus office.



REMARKS:

SIGNED

Superintendent or Foreman.



