



Western Michigan University
ScholarWorks at WMU

Legacy Scout Tickets from Pure Oil Company

8-20-2021

**MGRRE_PureOilScoutTickets_Cihak aka Cihak, F.
#1_2_21121001800000**

MGRRE
Western Michigan University

Follow this and additional works at: <https://scholarworks.wmich.edu/pure>



Part of the Geology Commons

WMU ScholarWorks Citation

MGRRE, "MGRRE_PureOilScoutTickets_Cihak aka Cihak, F. #1_2_21121001800000" (2021). *Legacy Scout Tickets from Pure Oil Company*. 6948.
<https://scholarworks.wmich.edu/pure/6948>

This Document is brought to you for free and open access via ScholarWorks at WMU. It has been accepted for inclusion in Legacy Scout Tickets from Pure Oil Company by an authorized administrator of ScholarWorks at WMU. See the National Digital Catalogue - Science Base Catalogue for more collections submitted by MGRRE.



MGRRE_PureOilScoutTickets_Cihak aka Cihak, F. #1_2_21121001800000

API 21121001800000

Permit Number 180

Lease Name Cihak aka Cihak, F. #1

Well Number 2

County Muskegon

Township 10N

Range 16W

Section 8

2021 DEQ or Pure co_name Dundee Oil and Gas Company

Pure Number 85

Latitude 43.27733

Longitude -86.23802

DATE Aug 25th 1928 LOCATION REPORT No. 85
STATE Michigan COUNTY Muskegon DIST Muskegon SEC. 8 TOWN 10N RANGE 16W
WELL No. 1 (SERIAL No. 85) FARM F. C. Chak ACRES

NAME OF STREAM OR WATERS QUADRANGLE
OPERATOR Deerdec Oil Co MAP Muskegon Twp. Muskegon Co

Feet from North Line of Farm

" " East " " "

100 " " South " " "

100 " " West " " "

Feet from North Line of Section

" " East " " "

" " South " " "

" " West " " "

LEGEND

○ LOCATION

① RIG

⊕ DRILLING

⊗ GAS WELL

● OIL WELL

⬤ SMALL OIL WELL

⬢ DRY HOLE

⬢ DRY SHOWING OIL

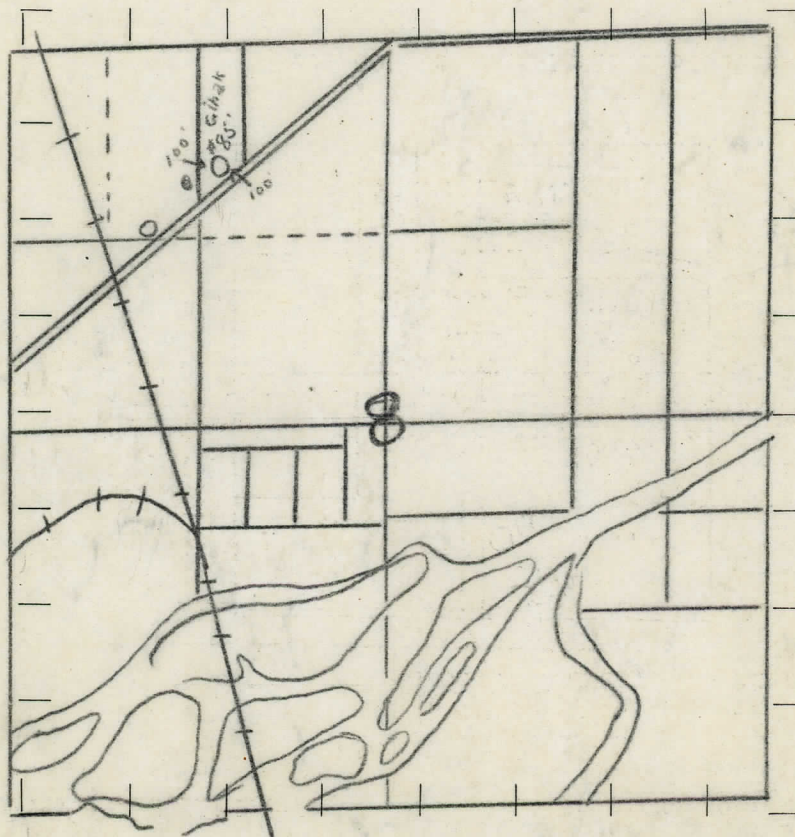
⬢ DRY SHOWING GAS

⬢ ABANDONED LOCATION

⬢ ABANDONED GAS WELL

⬢ ABANDONED OIL WELL

NOTE: Below make tracing from map (when no map is obtainable make sketch), showing farm, center of section, this location with measurements and also wells, dry holes, or other locations in the vicinity of this location. Make copy to keep for reference and send original to Columbus office.



REMARKS:

SIGNED

Superintendent or Foreman.

COMPLETION RECORD

DATE Oct. 20th 1923

No. 95

STATE Michigan COUNTY Muskegon DIST. TWP. Muskegon SEC. 8 TOWN 10N RANGE 16W

WELL No. 1 (SERIAL No. 95) FARM F. Cihak ACRES

NAME OF STREAM OR WATERS QUADRANGLE

OPERATOR Dundee Oil Co. MAP Muskegon Twp. Muskegon Co.

LOCATION REPORT SENT IN (DATE) Aug. 25th 1923.

WELL STARTED (DATE) Aug 25th 1923. WELL COMPLETED (DATE) Oct. 20th 1923

OIL WELL

GAS WELL

DRY HOLE

ABANDONED WELL

CROSS OUT THREE OF THE ABOVE
WELL RECORD

DATE OF SHOT NUMBER OF QUARTS

1st 24 HOURS PRODUCTION BARRELS OR FEET

2nd	"	"	"	"	"
3rd	"	"	"	"	"
4th	"	"	"	"	"
5th	"	"	"	"	"

SAND AND CASING

CASING SIZE	WEIGHT	CASING Feet Inches	SAND Name and Nature	TOP	BOTTOM	TOP PAY	BOTTOM PAY	SALT WATER
10"		244	Sand	0	40			
8 1/2"		350	Drift	40	244			
			Sand & rock	244	296			
			Blue shale	296	577			
			Lime	577	633			
			Slate	633	861			
			Red rock	861	885			
			Lime shells	885	985			
			Blue shale, lime shells	985	1193			
			Lime shells	1193	1197			
			Blue shale	1197	1400			
			Brown shale	1400	1460			
			Coffee shale	1460	1648			
			Lime	1648	1665			
			Black sandstone	1665	1904			
			Lime	1904	1915			
				1915	1925			
			Total depth		1925 feet.			

REMARKS

NOTE: MAKE COPY TO KEEP FOR REFERENCE AND SEND ORIGINAL TO CHICAGO OFFICE. LIST MATERIAL CHARGEABLE TO WELL ON OTHER SIDE.

SIGNED

SUPT. OR FOREMAN

STYLE	CONCRETE	BBEC	2EC	LOWE	REINFORCED
DESCRIPTION	QUANTITY	MAKE	SIZE	MATERIAL	

Summary of Drilling Wells

MICHIGAN SPECIAL. Production Division Date October 20, 1928. 192

NAME OF LEASE	Autho. No.	Well No.	DEPTH		FORMATION	REMARKS
			From	To		
DUNDEE OIL & GAS COMPANY-F. CIHAK #1 OUR #85. Location: 175' from North Line and 1370' from West Line of sec. 8-10-16W. ELEVATION: 632			0	40	Sand.	
			40	244	Drift.	
			244	296	Sand and Rock:(little water)	
			296	577	Blue shale.	
			577	633	Lime.	
			633	861	Shale.	
			861	885	Red Rock.	
			885	985	Lime shells.	
			985	1193	Blue Shale, Lime shells.	
			1193	1197	Lime shells.	
			1197	1400	Blue shale.	
			1400	1460	Brown shale.	
			1460	1648	Coffee Shale.	
			1648	1665	Traverse (Showing of Oil & Gas)	
			1665	1904	Lime.	
			1904	1915	Black sandLime (Gas & Oil)...	
			1915	1925	Lime.	
			TOTAL DEPTH 1925, FEET.			
			CASING RECORD.			
			Drive Pipe----10"--244 Feet.			
			Casing 8 1/2"--350 " .			