



Western Michigan University
ScholarWorks at WMU

Legacy Scout Tickets from Pure Oil Company

8-20-2021

MGRRE_PureOilScoutTickets_Continental Motors Corporation_3_21121001310000

MGRRE
Western Michigan University

Follow this and additional works at: <https://scholarworks.wmich.edu/pure>



Part of the Geology Commons

WMU ScholarWorks Citation

MGRRE, "MGRRE_PureOilScoutTickets_Continental Motors Corporation_3_21121001310000" (2021).
Legacy Scout Tickets from Pure Oil Company. 6968.
<https://scholarworks.wmich.edu/pure/6968>

This Document is brought to you for free and open access via ScholarWorks at WMU. It has been accepted for inclusion in Legacy Scout Tickets from Pure Oil Company by an authorized administrator of ScholarWorks at WMU. See the National Digital Catalogue - Science Base Catalogue for more collections submitted by MGRRE.



**MGRRE_PureOilScoutTickets_Continental Motors
Corporation_3_21121001310000**

API 21121001310000

Permit Number 131

Lease Name Continental Motors Corporation

Well Number 3

County Muskegon

Township 10N

Range 16W

Section 16

2021 DEQ or Pure co_name Continental Motors Corporation

Pure Number 105

Latitude 43.25391

Longitude -86.22072

Corrected Location Report

THE PURE OIL COMPANY

DATE 2-19-29

LOCATION REPORT

No.

STATE Mich COUNTY Muskegon DIST. Muskegon SEC. 16 TOWN 10 N RANGE 16 WWELL No. 72 (SERIAL No. 105) FARM Continental Motors Corp. ACRES

NAME OF STREAM OR WATERS QUADRANGLE

OPERATOR Cont. Motors MAP

Feet from North Line of Farm

" " East " " "

" " South " " "

" " West " " "

Feet from North Line of Section

" " East " " "

" S " E & W 1/4 Line

" " West " " "

6301200**LEGEND**

O LOCATION

① RIG

⊕ DRILLING

⊗ GAS WELL

● OIL WELL

⊙ SMALL OIL WELL

⊕ DRY HOLE

⊕ DRY SHOWING OIL

⊕ DRY SHOWING GAS

⊗ ABANDONED LOCATION

⊗ ABANDONED GAS WELL

⊙ ABANDONED OIL WELL

NOTE: Below make tracing from map, (when no map is obtainable make sketch) showing farm, center of section, this location with measurements and also wells, dry holes, or other locations in the vicinity of this location. Make copy to keep for reference and send original to Columbus office.

SEE plat for corrected
Location of # 72

N

REMARKS:

SIGNED

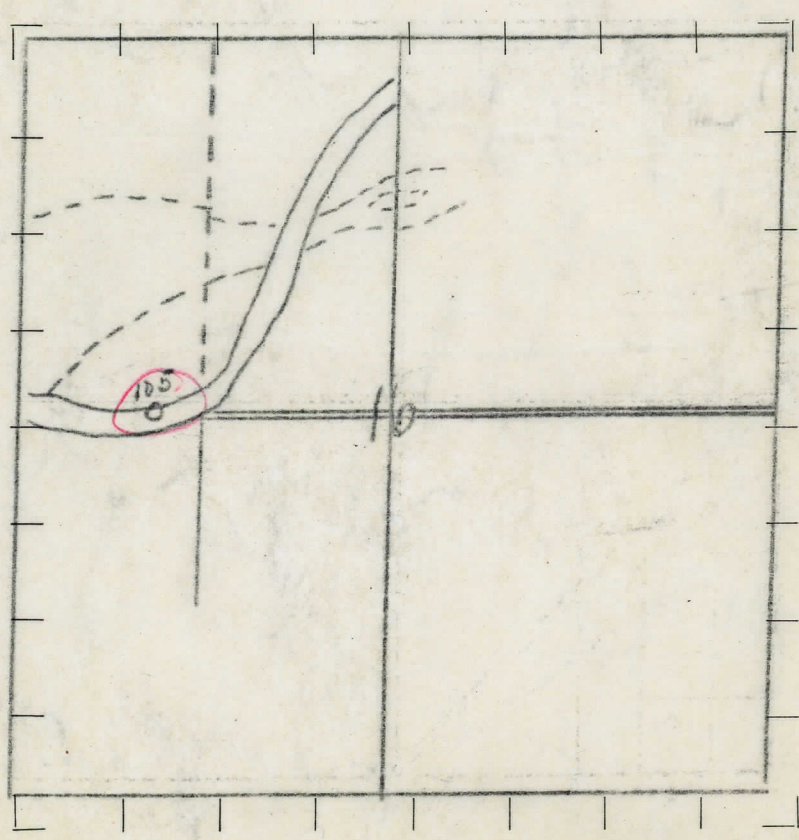
Superintendent or Foreman.

STATE Michigan COUNTY Muskogee DIST Muskogee SEC. 16 TOWN 10 N RANGE 16
 WELL No. 3 (SERIAL No. 105) FARM Continental Motor Corp. ACRES
 NAME OF STREAM OR WATERS _____ QUADRANGLE _____
 OPERATOR Continental Motor Corp. MAP Muskogee Tp. Muskogee Co.

_____ Feet from North Line of Farm
 _____ " " East " " "
 _____ " " South " " "
 _____ " " West " " "
 _____ Feet from North Line of Section
 _____ " " East " " "
 _____ " " South " " "
 _____ " " West " " "

- LEGEND**
- | | |
|------------------|----------------------|
| ○ LOCATION | ⊕ DRY HOLE |
| ① RIG | ◆ DRY SHOWING OIL |
| ⊕ DRILLING | ⊗ DRY SHOWING GAS |
| ⊗ GAS WELL | ⊖ ABANDONED LOCATION |
| ● OIL WELL | ⊗ ABANDONED GAS WELL |
| ⊕ SMALL OIL WELL | ⊖ ABANDONED OIL WELL |

NOTE: Below make tracing from map (when no map is obtainable make sketch), showing farm, center of section, this location with measurements and also wells, dry holes, or other locations in the vicinity of this location. Make copy to keep for reference and send original to Columbus office.



REMARKS:

SIGNED _____

Superintendent or Foreman.

STATE Michigan COUNTY Muskegon DIST Muskegon SEC. 16 TOWN 10N RANGE 16W
 WELL No. 3 (SERIAL No. 105) FARM Continental Motor Corp. ACRES

NAME OF STREAM OR WATERS QUADRANGLE
 OPERATOR Continental Motor Corp. MAP Muskegon Tp. Muskegon Co.
600 Feet from North Line of Farm

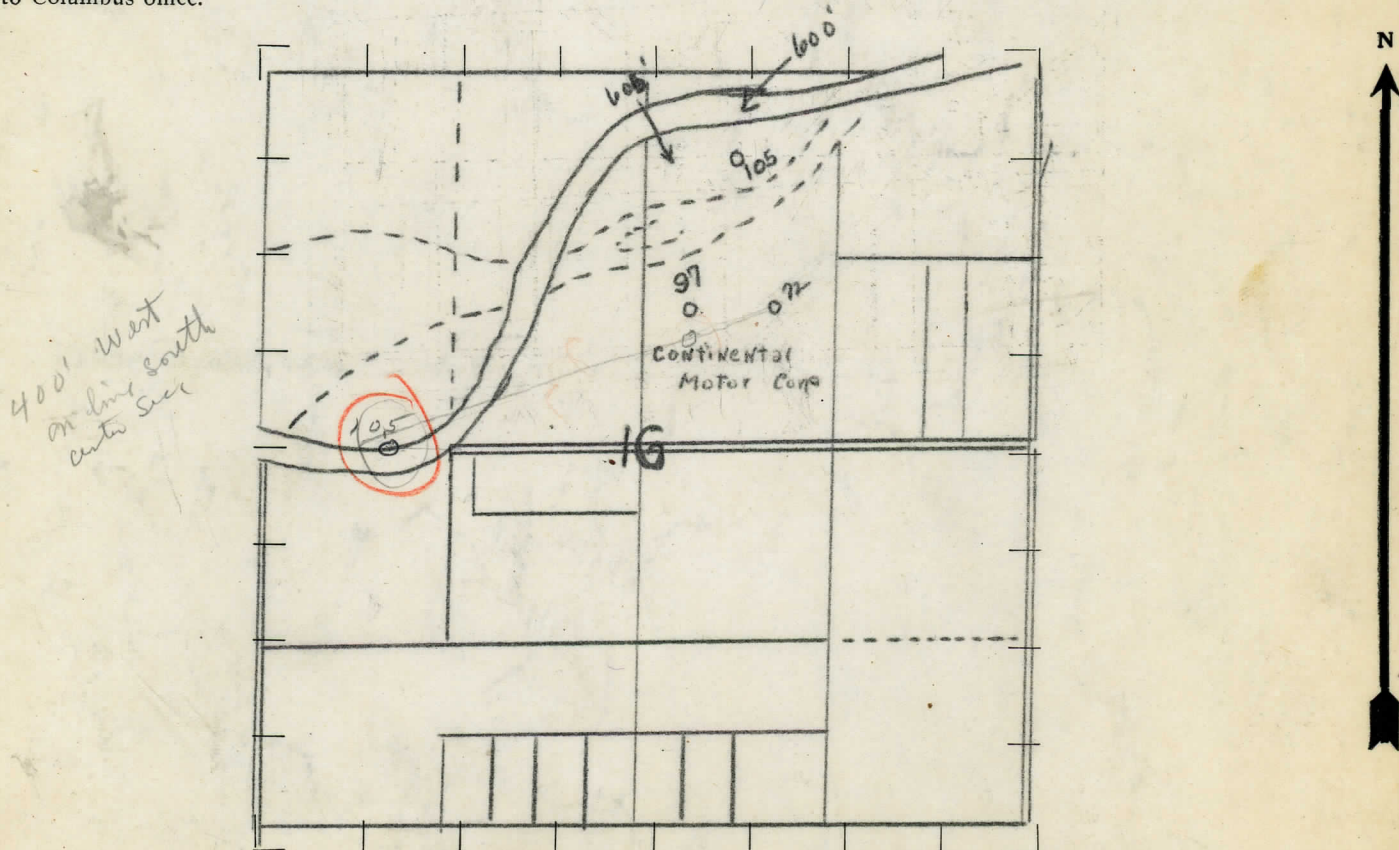
" " East " " "
 " " South " " "
605 " " West " " "

Feet from North Line of Section
 " " East " " "
 " " South " " "
 " " West " " "

LEGEND

- | | |
|------------------|----------------------|
| ○ LOCATION | ⬮ DRY HOLE |
| ① RIG | ⬮ DRY SHOWING OIL |
| ⊕ DRILLING | ⬮ DRY SHOWING GAS |
| ⊙ GAS WELL | ⬮ ABANDONED LOCATION |
| ● OIL WELL | ⬮ ABANDONED GAS WELL |
| ⬮ SMALL OIL WELL | ⬮ ABANDONED OIL WELL |

NOTE: Below make tracing from map (when no map is obtainable make sketch), showing farm, center of section, this location with measurements and also wells, dry holes, or other locations in the vicinity of this location. Make copy to keep for reference and send original to Columbus office.



REMARKS:

SIGNED

Superintendent or Foreman.

