



Western Michigan University
ScholarWorks at WMU

Legacy Scout Tickets from Pure Oil Company

8-20-2021

MGRRE_PureOilScoutTickets_Burns, W. P._2_21121005670000

MGRRE

Western Michigan University

Follow this and additional works at: <https://scholarworks.wmich.edu/pure>



Part of the Geology Commons

WMU ScholarWorks Citation

MGRRE, "MGRRE_PureOilScoutTickets_Burns, W. P._2_21121005670000" (2021). *Legacy Scout Tickets from Pure Oil Company*. 6975.

<https://scholarworks.wmich.edu/pure/6975>

This Document is brought to you for free and open access via ScholarWorks at WMU. It has been accepted for inclusion in Legacy Scout Tickets from Pure Oil Company by an authorized administrator of ScholarWorks at WMU. See the National Digital Catalogue - Science Base Catalogue for more collections submitted by MGRRE.



MGRRE_PureOilScoutTickets_Burns, W. P._2_21121005670000

API 21121005670000

Permit Number 567

Lease Name Burns, W. P.

Well Number 2

County Muskegon

Township 10N

Range 16W

Section 5

2021 DEQ or Pure co_name Goldboss, Kelley

Pure Number 112

Latitude 43.27886

Longitude -86.22349

DATE Sept 22nd 1928

THE PURE OIL COMPANY

LOCATION REPORT

No. 112

STATE Michigan COUNTY Muskegon DIST Muskegon SEC. 5 TOWN 10N RANGE 16W
 WELL No. 2 (SERIAL No. 112) FARM W. Burns ACRES

NAME OF STREAM OR WATERS QUADRANGLE

OPERATOR Kelly - Gold boss MAP Muskegon Tp. Muskegon Co

30 Feet from North Line of Farm

30 " " East " " "

" " South " " "

" " West " " "

Feet from North Line of Section

" " East " " "

" " South " " "

" " West " " "

LEGEND

O LOCATION

① RIG

⊕ DRILLING

⊗ GAS WELL

● OIL WELL

⊙ SMALL OIL WELL

⊛ DRY HOLE

⊕ DRY SHOWING OIL

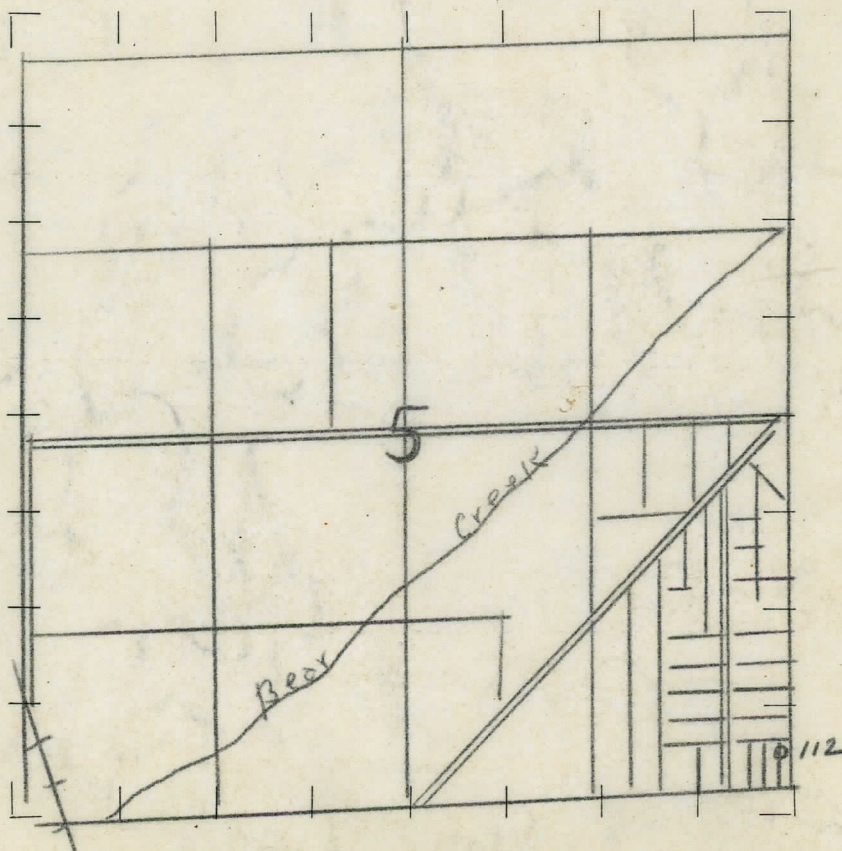
⊗ DRY SHOWING GAS

⊙ ABANDONED LOCATION

⊗ ABANDONED GAS WELL

⊙ ABANDONED OIL WELL

NOTE: Below make tracing from map (when no map is obtainable make sketch), showing farm, center of section, this location with measurements and also wells, dry holes, or other locations in the vicinity of this location. Make copy to keep for reference and send original to Columbus office.



REMARKS:

SIGNED

Superintendent or Foreman.

SIGNED _____ SUPT. OR FOREMAN