



Western Michigan University  
ScholarWorks at WMU

---

Legacy Scout Tickets from Pure Oil Company

---

8-20-2021

## MGRRE\_PureOilScoutTickets\_Bower or Hower, C M\_2\_unk

MGRRE

*Western Michigan University*

Follow this and additional works at: <https://scholarworks.wmich.edu/pure>



Part of the Geology Commons

---

### WMU ScholarWorks Citation

MGRRE, "MGRRE\_PureOilScoutTickets\_Bower or Hower, C M\_2\_unk" (2021). *Legacy Scout Tickets from Pure Oil Company*. 6976.

<https://scholarworks.wmich.edu/pure/6976>

This Document is brought to you for free and open access via ScholarWorks at WMU. It has been accepted for inclusion in Legacy Scout Tickets from Pure Oil Company by an authorized administrator of ScholarWorks at WMU. See the National Digital Catalogue - Science Base Catalogue for more collections submitted by MGRRE.



---

MGRRE\_PureOilScoutTickets\_Bower or Hower, C M\_2\_unk

API unk

Permit Number unk

Lease Name Bower or Hower, C M

Well Number 2

County Muskegon

Township 10N

Range 16W

Section 5

2021 DEQ or Pure co\_name C M Bower et al

Pure Number 113

Latitude 43.2867509

Longitude -86.2333778

DATE Sept 22nd 1928

## LOCATION REPORT

No. 113

STATE Michigan COUNTY Mustkegon DIST TWP Mustkegon SEC. 5 TOWN 10N RANGE 16W  
 WELL No. 2 (SERIAL No. 113) FARM C.M. Hower ACRES

NAME OF STREAM OR WATERS QUADRANGLE

OPERATOR C.M. Bower & Etal MAP Mustkegon Tp. Mustkegon Co

28 Feet from North Line of Farm  
38 " " East " " "

" " South " " "  
 " " West " " "

Feet from North Line of Section

" " East " " "

" " South " " "

" " West " " "

## LEGEND

O LOCATION

① RIG

⊕ DRILLING

⊗ GAS WELL

● OIL WELL

⦿ SMALL OIL WELL

⦿ DRY HOLE

⦿ DRY SHOWING OIL

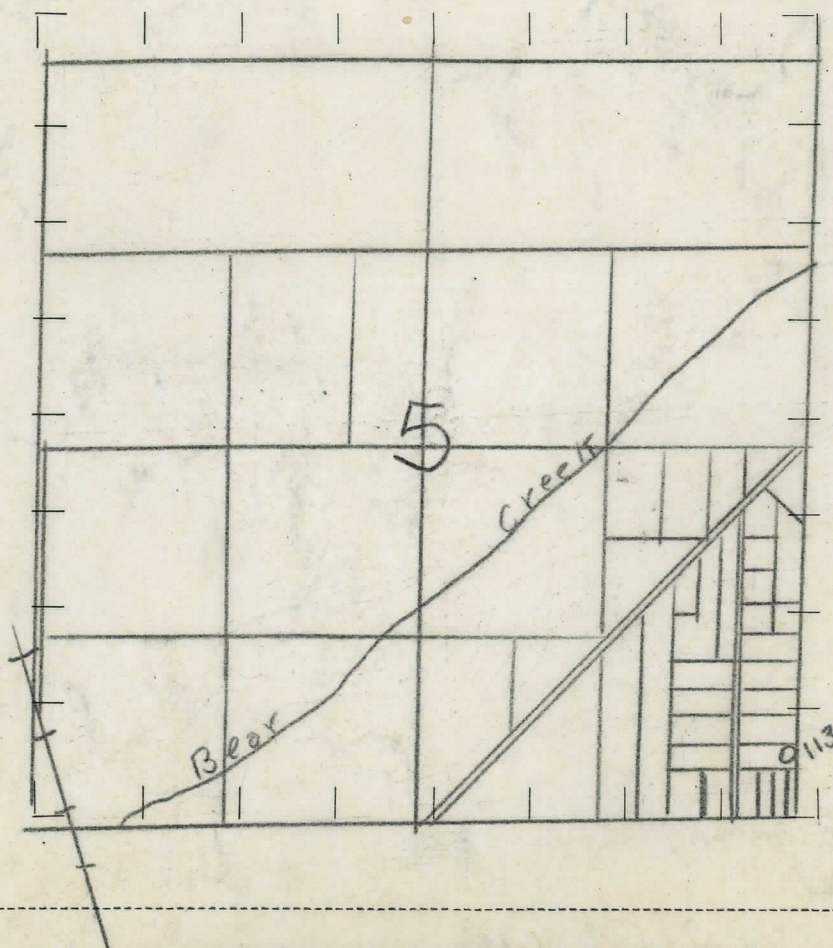
⦿ DRY SHOWING GAS

⦿ ABANDONED LOCATION

⦿ ABANDONED GAS WELL

⦿ ABANDONED OIL WELL

NOTE: Below make tracing from map (when no map is obtainable make sketch), showing farm, center of section, this location with measurements and also wells, dry holes, or other locations in the vicinity of this location. Make copy to keep for reference and send original to Columbus office.



REMARKS:

SIGNED

Superintendent or Foreman.



**SUPT. OR FOREMAN**