



Western Michigan University
ScholarWorks at WMU

Legacy Scout Tickets from Pure Oil Company

8-20-2021

MGRRE_PureOilScoutTickets_Curtis, A B_1_21121001730000

MGRRE

Western Michigan University

Follow this and additional works at: <https://scholarworks.wmich.edu/pure>



Part of the Geology Commons

WMU ScholarWorks Citation

MGRRE, "MGRRE_PureOilScoutTickets_Curtis, A B_1_21121001730000" (2021). *Legacy Scout Tickets from Pure Oil Company*. 6986.

<https://scholarworks.wmich.edu/pure/6986>

This Document is brought to you for free and open access via ScholarWorks at WMU. It has been accepted for inclusion in Legacy Scout Tickets from Pure Oil Company by an authorized administrator of ScholarWorks at WMU. See the National Digital Catalogue - Science Base Catalogue for more collections submitted by MGRRE.



MGRRE_PureOilScoutTickets_Curtis, A B_1_21121001730000

API 21121001730000

Permit Number 173

Lease Name Curtis, A B

Well Number 1

County Muskegon

Township 10N

Range 16W

Section 7

2021 DEQ or Pure co_name Bowers, C. M.

Pure Number 123

Latitude 43.267886

Longitude -86.249966

Corrected Location Report

THE PURCHASER OIL COMPANY

LOCATION REPORT

No. 123

DATE *Dec 29th 1928*

STATE *Michigan* COUNTY *Muskegon* DIST. *Muskegon* SEC. *7* TOWN *10N* RANGE *16W*
WELL No. *1* (SERIAL No. *123*) FARM *Courtesy* ACRES

NAME OF STREAM OR WATERS QUADRANGLE

OPERATOR *L. M. Bowers & etal* MAP *Muskegon Twp. Muskegon Co*

Feet from North Line of Farm

" " East " " "

" " South " " "

" " West " " "

2800 Feet from North Line of Section

1730 " " East " " "

" " South " " "

" " West " " "

LEGEND

○ LOCATION

① RIG

⊕ DRILLING

⊗ GAS WELL

● OIL WELL

⬮ SMALL OIL WELL

⬮ DRY HOLE

⬮ DRY SHOWING OIL

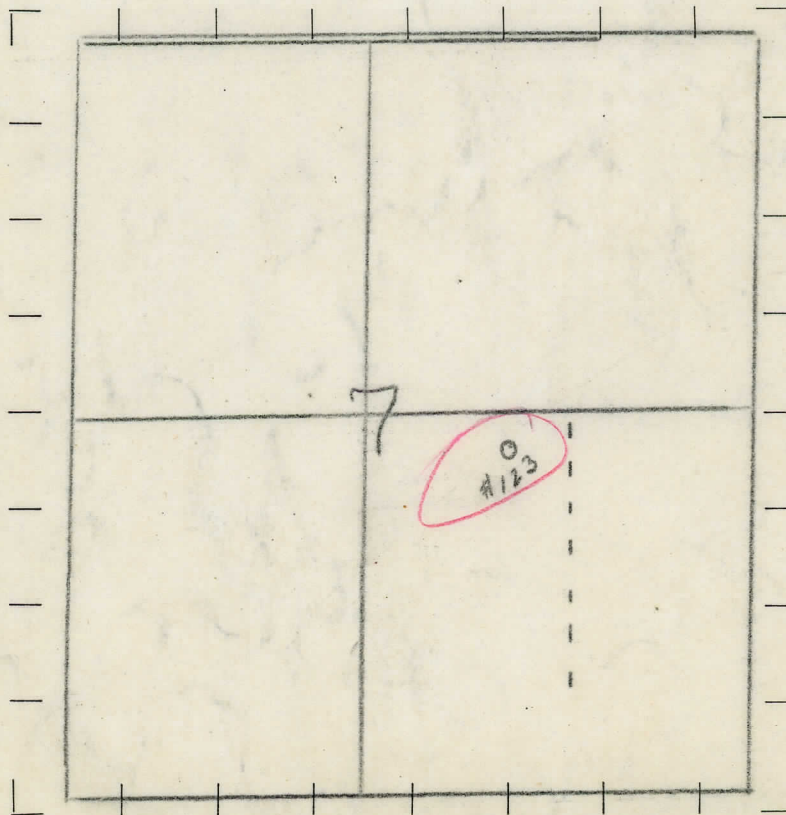
⬮ DRY SHOWING GAS

⬮ ABANDONED LOCATION

⬮ ABANDONED GAS WELL

⬮ ABANDONED OIL WELL

NOTE: Below make tracing from map (when no map is obtainable make sketch), showing farm, center of section, this location with measurements and also wells, dry holes, or other locations in the vicinity of this location. Make copy to keep for reference and send original to Columbus office.



REMARKS:

SIGNED

Superintendent or Foreman.

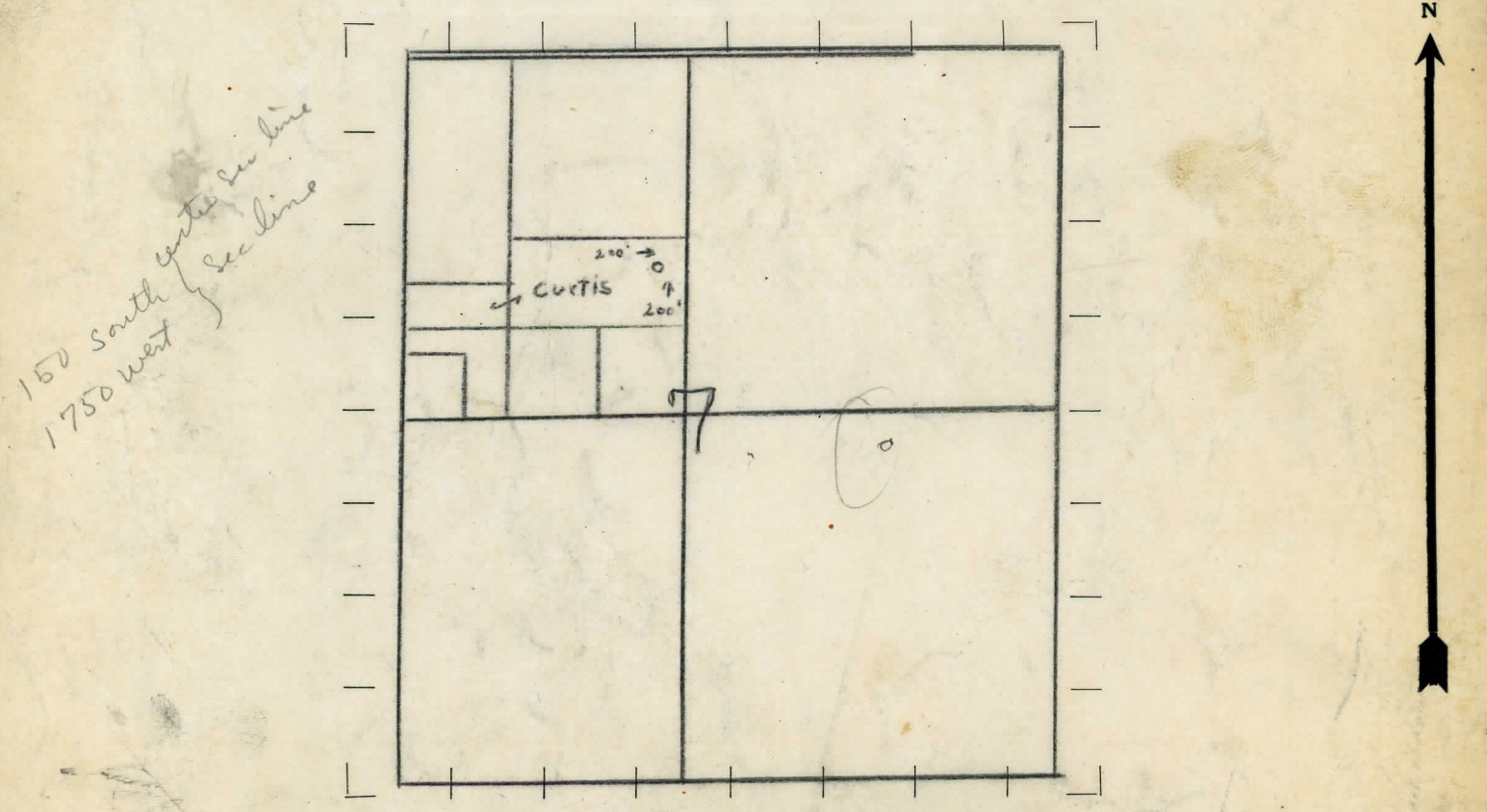
LOCATION REPORT

D. 11/16/1928
STATE Michigan COUNTY Muskegon DIST Muskegon TWP. Muskegon SEC. 7 TOWN 10N RANGE 16W
WELL No. 1 (SERIAL No. 123) FARM ACRES
NAME OF STREAM OR WATERS QUADRANGLE
OPERATOR E. M. Bowers & Co. MAP Muskegon Sp. Muskegon Co.

200 Feet from North Line of Farm
200 " " East " " "
" " South " " "
" " West " " "
2800 Feet from North Line of Section
1730 " " East " " "
" " South " " "
" " West " " "

- LEGEND
- | | |
|------------------|----------------------|
| ○ LOCATION | ✦ DRY HOLE |
| ① RIG | ✦ DRY SHOWING OIL |
| ⊕ DRILLING | ✦ DRY SHOWING GAS |
| ⊗ GAS WELL | ⊗ ABANDONED LOCATION |
| ● OIL WELL | ⊗ ABANDONED GAS WELL |
| ⬮ SMALL OIL WELL | ⬮ ABANDONED OIL WELL |

NOTE: Below make tracing from map (when no map is obtainable make sketch), showing farm, center of section, this location with measurements and also wells, dry holes, or other locations in the vicinity of this location. Make copy to keep for reference and send original to Columbus office.



REMARKS:

SIGNED

Superintendent or Foreman.

Saginaw Michigan Special

DATE Jan. 12th 1929

COMPLETION RECORD

No. 123

STATE Michigan COUNTY Muskegon DIST. Muskegon SEC. 7 TOWN 10N RANGE 16W
TWP. _____
PREC. _____

WELL No. 1 (SERIAL No. 123) FARM Curtis ACRES _____

NAME OF STREAM OR WATERS _____ QUADRANGLE _____

OPERATOR C.M. Bowers & etal MAP Muskegon Twp. Muskegon Co.

LOCATION REPORT SENT IN (DATE) Dec. 29th 1928 (Correction) Oct. 6th 1928 @ Original

WELL STARTED (DATE) Dec. 29th 1938 WELL COMPLETED (DATE) _____

XX OIL WELN

X GAS WELL X

DRY HOLE

XXXXXXXXXXXX
 X ABANDONED WELL X
 XXXXXXXXXXXXXXX

**CROSS OUT THREE OF THE ABOVE
WELL RECORD**

DATE OF SHOT _____ NUMBER OF QUARTS _____

1st 24 HOURS PRODUCTION _____ BARRELS OR FEET _____

2nd " " " _____ " " "

3rd " " " _____ " " "

4th " " " _____ " "

5th " " " _____

SAND AND CASING

[illegible][illegible]