



Western Michigan University  
ScholarWorks at WMU

---

Legacy Scout Tickets from Pure Oil Company

---

8-20-2021

**MGRRE\_PureOilScoutTickets\_Cooper\_1\_21121001790000**

MGRRE

*Western Michigan University*

Follow this and additional works at: <https://scholarworks.wmich.edu/pure>



Part of the Geology Commons

---

#### WMU ScholarWorks Citation

MGRRE, "MGRRE\_PureOilScoutTickets\_Cooper\_1\_21121001790000" (2021). *Legacy Scout Tickets from Pure Oil Company*. 7004.

<https://scholarworks.wmich.edu/pure/7004>

This Document is brought to you for free and open access via ScholarWorks at WMU. It has been accepted for inclusion in Legacy Scout Tickets from Pure Oil Company by an authorized administrator of ScholarWorks at WMU. See the National Digital Catalogue - Science Base Catalogue for more collections submitted by MGRRE.



---

**MGRRE\_PureOilScoutTickets\_Cooper\_1\_21121001790000**

API 21121001790000

Permit Number 179

Lease Name Cooper

Well Number 1

County Muskegon

Township 10N

Range 16W

Section 8

2021 DEQ or Pure co\_name Eastman, W. M.

Pure Number 141

Latitude 43.2698

Longitude -86.23515

Form 24 5M 5-6-28 P100 EVANSTON  
DATE Oct 27th 1928

THE PURE OIL COMPANY

THE PURE OIL COMPANY  
LOCATION REPORTNo. 141STATE Michigan COUNTY Muskogee DIST TWP. Muskogee SEC. 8 TOWN 10N RANGE 16W  
WELL No. 1 (SERIAL No. 141) FARM John Cooper ACRES

NAME OF STREAM OR WATERS \_\_\_\_\_ QUADRANGLE \_\_\_\_\_

OPERATOR W.B. Eastman MAP Muskogee Sup. Muskogee Co.

\_\_\_\_\_ Feet from North Line of Farm

\_\_\_\_\_ " " East " " "

\_\_\_\_\_ " " South " " "

\_\_\_\_\_ " " West " " "

\_\_\_\_\_ Feet from North Line of Section

\_\_\_\_\_ " " East " " "

\_\_\_\_\_ 2400 " " South " " "\_\_\_\_\_ 2130 " " West " " "

## LEGEND

○ LOCATION

① RIG

⊕ DRILLING

⊗ GAS WELL

● OIL WELL

◆ SMALL OIL WELL

⊕ DRY HOLE

⊕ DRY SHOWING OIL

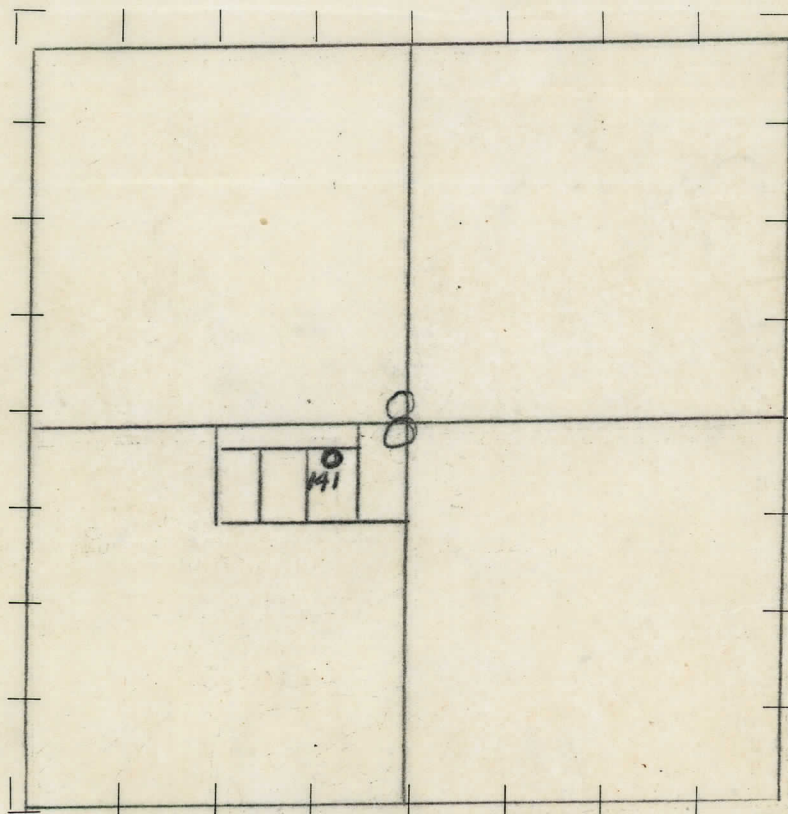
⊕ DRY SHOWING GAS

⊕ ABANDONED LOCATION

⊕ ABANDONED GAS WELL

⊕ ABANDONED OIL WELL

NOTE: Below make tracing from map (when no map is obtainable make sketch), showing farm, center of section, this location with measurements and also wells, dry holes, or other locations in the vicinity of this location. Make copy to keep for reference and send original to Columbus office.



REMARKS:

SIGNED \_\_\_\_\_

\_\_\_\_\_  
Superintendent or Foreman.



Form 5-6-28 P100 Evanston Pub. Co.

**COMPLETION RECORD**

THE PURE OIL COMPANY

DATE 10/23/28.

LOCATION REPORT

No.

STATE MICHIGAN. COUNTY MUSKEGON. DIST MUSKEGON. SEC. 8 TOWN 10-N RANGE 16-W.

WELL No. ONE. (SERIAL No. 141) FARM John Cooper. 10 ACRES

NAME OF STREAM OR WATERS QUADRANGLE NE  $\frac{1}{4}$  OF SW  $\frac{1}{4}$  Sec. 8.

OPERATOR W. B. Eastman. MAP MUSKEGON AREA.

100 Feet from North Line of Farm

“ “ East “ “ “

“ “ South “ “ “

150 “ “ West “ “ “

Feet from North Line of Section

“ “ East “ “ “

2400 ✓ “ “ South “ “ “

2100 “ “ West “ “ “

**LEGEND**

○ LOCATION

① RIG

⊕ DRILLING

⊗ GAS WELL

● OIL WELL

◆ SMALL OIL WELL

⊕ DRY HOLE

⊕ DRY SHOWING OIL

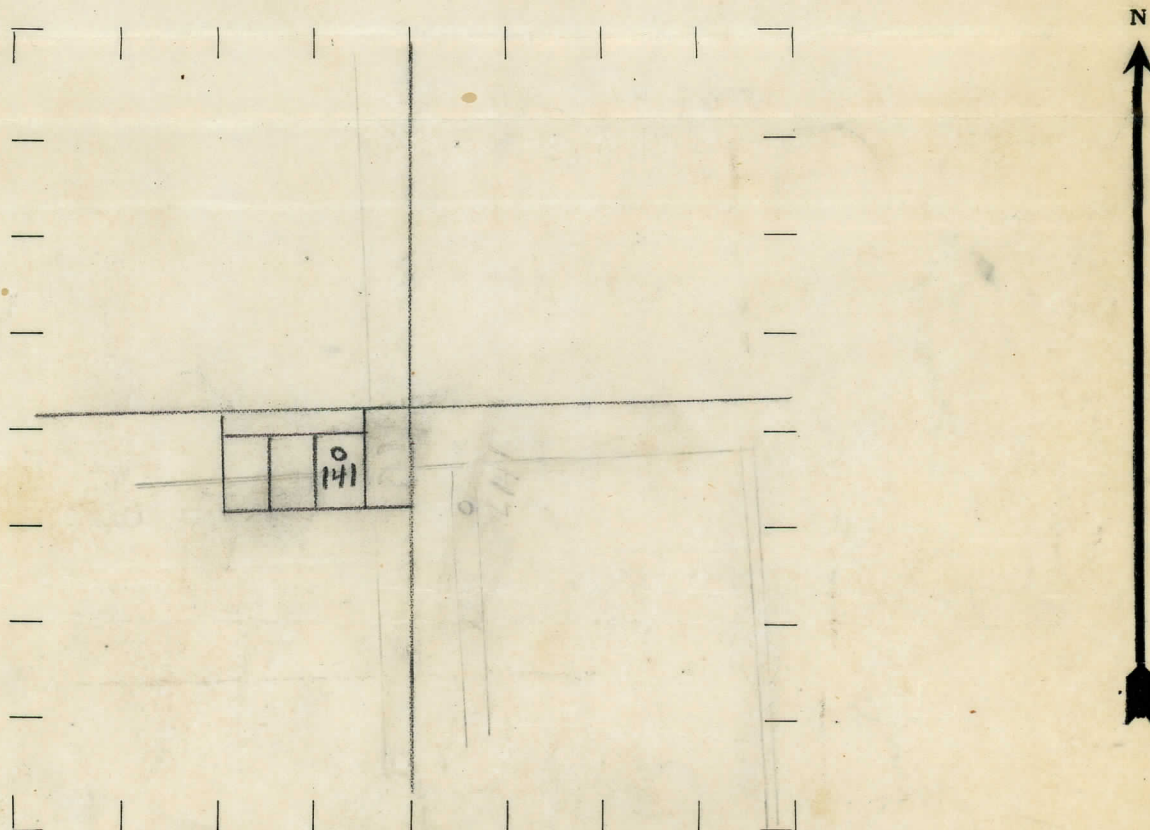
⊕ DRY SHOWING GAS

⊕ ABANDONED LOCATION

⊕ ABANDONED GAS WELL

⊕ ABANDONED OIL WELL

NOTE: Below make tracing from map (when no map is obtainable make sketch), showing farm, center of section, this location with measurements and also wells, dry holes, or other locations in the vicinity of this location. Make copy to keep for reference and send original to Columbus office.



REMARKS:

SIGNED

Superintendent or Foreman.



