



Western Michigan University
ScholarWorks at WMU

Legacy Scout Tickets from Pure Oil Company

8-20-2021

MGRRE_PureOilScoutTickets_Andree,
Richard_1_21121001860000

MGRRE
Western Michigan University

Follow this and additional works at: <https://scholarworks.wmich.edu/pure>



Part of the Geology Commons

WMU ScholarWorks Citation

MGRRE, "MGRRE_PureOilScoutTickets_Andree, Richard_1_21121001860000" (2021). *Legacy Scout Tickets from Pure Oil Company*. 7005.
<https://scholarworks.wmich.edu/pure/7005>

This Document is brought to you for free and open access via ScholarWorks at WMU. It has been accepted for inclusion in Legacy Scout Tickets from Pure Oil Company by an authorized administrator of ScholarWorks at WMU. See the National Digital Catalogue - Science Base Catalogue for more collections submitted by MGRRE.



MGRRE_PureOilScoutTickets_Andree, Richard_1_21121001860000

API 21121001860000

Permit Number 186

Lease Name Andree, Richard

Well Number 1

County Muskegon

Township 10N

Range 17W

Section 12

2021 DEQ or Pure co_name Nelson and Witt, Incorporated

Pure Number 142

Latitude 43.269335

Longitude -86.271249

THE PURE OIL COMPANY

DATE August 31, 1940

LOCATION REPORT

No. 142

STATE Michigan COUNTY Muskegon DIST. Laketon SEC. 12 TOWN 10 N RANGE 17 W
 WELL No. 1 (SERIAL No. 142) FARM Andree ACRES

NAME OF STREAM OR WATERS _____ QUADRANGLE ?OPERATOR Witt and Nelson Map Laketon Township, Muskegon County

Feet from North Line of Farm

" " East " " "

" " South " " "

" " West " " "

Feet from North Line of Section

" " East " " "

" " South " " "

" " West " " "

LEGEND

○ LOCATION

① RIG

⊕ DRILLING

☼ GAS WELL

● OIL WELL

◆ SMALL OIL WELL

⊙ DRY HOLE

◆ DRY SHOWING OIL

⊙ DRY SHOWING GAS

⊙ ABANDONED LOCATION

☼ ABANDONED GAS WELL

◆ ABANDONED OIL WELL

NOTE: Below make tracing from map, (when no map is obtainable make sketch) showing farm, center of section, this location with measurements and also wells, dry holes, or other locations in the vicinity of this location.

Plugged and abandoned 2-12-40.

REMARKS:

SIGNED

Superintendent or Foreman.

DATE 10/23/28 LOCATION REPORT No. 117

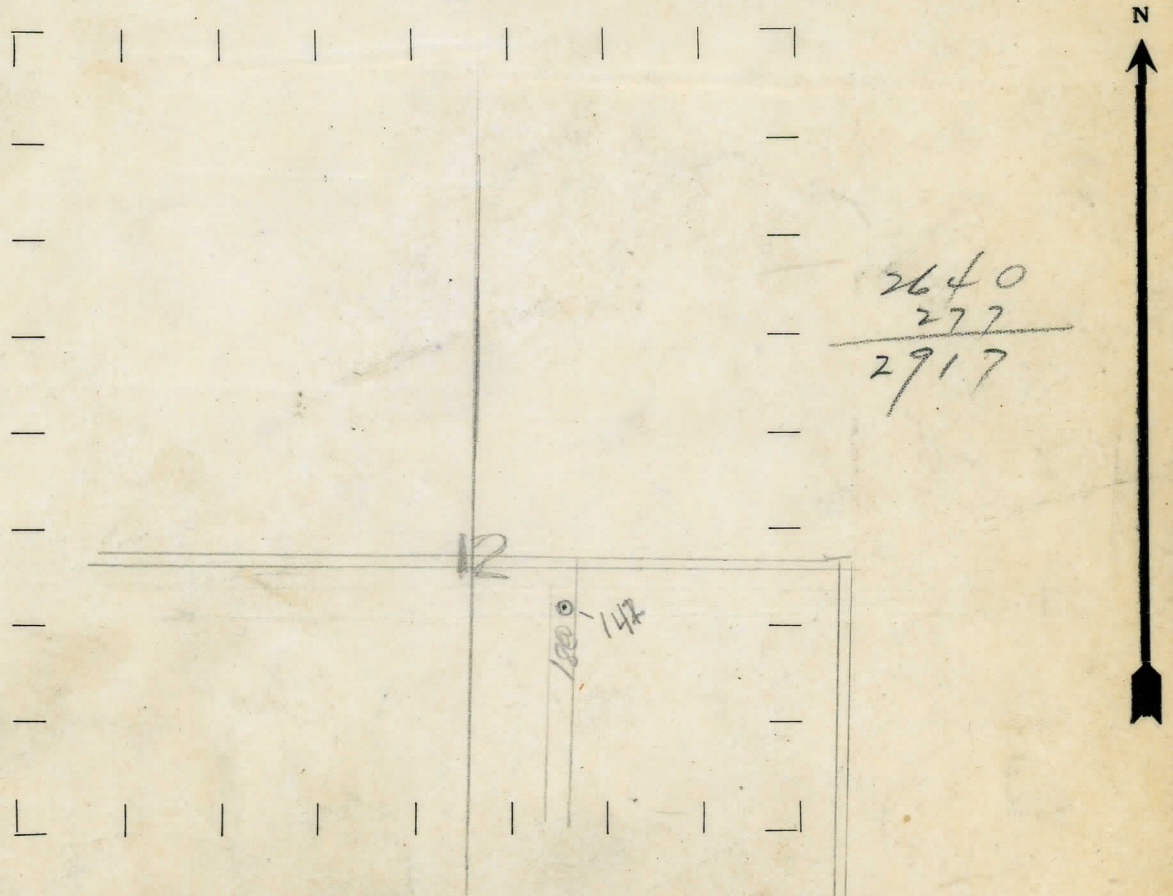
STATE MICHIGAN COUNTY MUSKEGON DIST. LAKETON SEC. 12 TOWN 10-N RANGE 17W
WELL No. ONE (SERIAL No. 142) FARM ANDREE ACRES 18
NAME OF STREAM OR WATERS _____ QUADRANGLE _____
OPERATOR WITT & NELSON MAP LAKETON TOWNSHIP

277 Feet from North Line of Farm
" " East " " "
" " South " " "
" " West " " "
2917
3,000 Feet from North Line of Section
2,000 " " East " " "
" " South " " "
" " West " " "

2-12-40

- LEGEND**
- LOCATION
 - ① RIG
 - ⊕ DRILLING
 - ⊙ GAS WELL
 - OIL WELL
 - ⦿ SMALL OIL WELL
 - ✦ DRY HOLE
 - ✦ DRY SHOWING OIL
 - ✦ DRY SHOWING GAS
 - ⦿ ABANDONED LOCATION
 - ✦ ABANDONED GAS WELL
 - ⦿ ABANDONED OIL WELL

NOTE: Below make tracing from map (when no map is obtainable make sketch), showing farm, center of section, this location with measurements and also wells, dry holes, or other locations in the vicinity of this location. Make copy to keep for reference and send original to Columbus office.



REMARKS: 277 FEET FROM THE NORTH LINE AND IN CENTER OF PROPERTY.

SIGNED

Superintendent or Foreman.

DATE _____ LOCATION KELOKI
 STATE Michigan COUNTY Muskogee DIST. Laketon SEC. 12 TOWN 10 RANGE 17
 WELL No. 1 (SERIAL No. 142) FARM Andree ACRES _____

NAME OF STREAM OR WATERS _____ QUADRANGLE _____
 OPERATOR Witt + Nelson MAP Laketon Twp Muskogee Co.

_____ Feet from North Line of Farm

_____ " " East " " "

_____ " " South " " "

_____ " " West " " "

2917 Feet from North Line of Section

2,000 " " East " " "

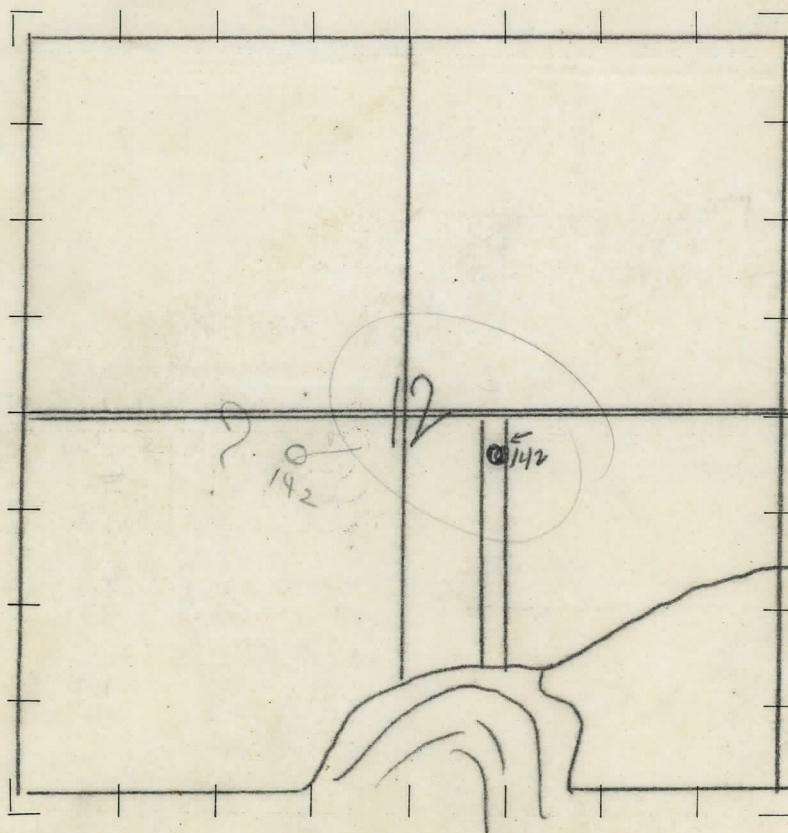
_____ " " South " " "

_____ " " West " " "

LEGEND

- | | |
|------------------|----------------------|
| ○ LOCATION | ✦ DRY HOLE |
| ① RIG | ✦ DRY SHOWING OIL |
| ⊕ DRILLING | ✦ DRY SHOWING GAS |
| ⊗ GAS WELL | ✦ ABANDONED LOCATION |
| ● OIL WELL | ✦ ABANDONED GAS WELL |
| ⬮ SMALL OIL WELL | ✦ ABANDONED OIL WELL |

NOTE: Below make tracing from map (when no map is obtainable make sketch), showing farm, center of section, this location with measurements and also wells, dry holes, or other locations in the vicinity of this location. Make copy to keep for reference and send original to Columbus office.



REMARKS:

SIGNED

Superintendent or Foreman.

[Handwritten signature]

CORRECTED LOCATION REPORT
COMPLETION RECORD
No. 142

DATE 2-1-29 THE PURE OIL COMPANY LOCATION REPORT No.

STATE MICHIGAN COUNTY MUSKEGON DIST. LAKETON SEC. 12 TOWN 10-N RANGE 17W
PREC. R. ANDREE

WELL No. 1 (SERIAL No. 142) FARM R. ANDREE ACRES

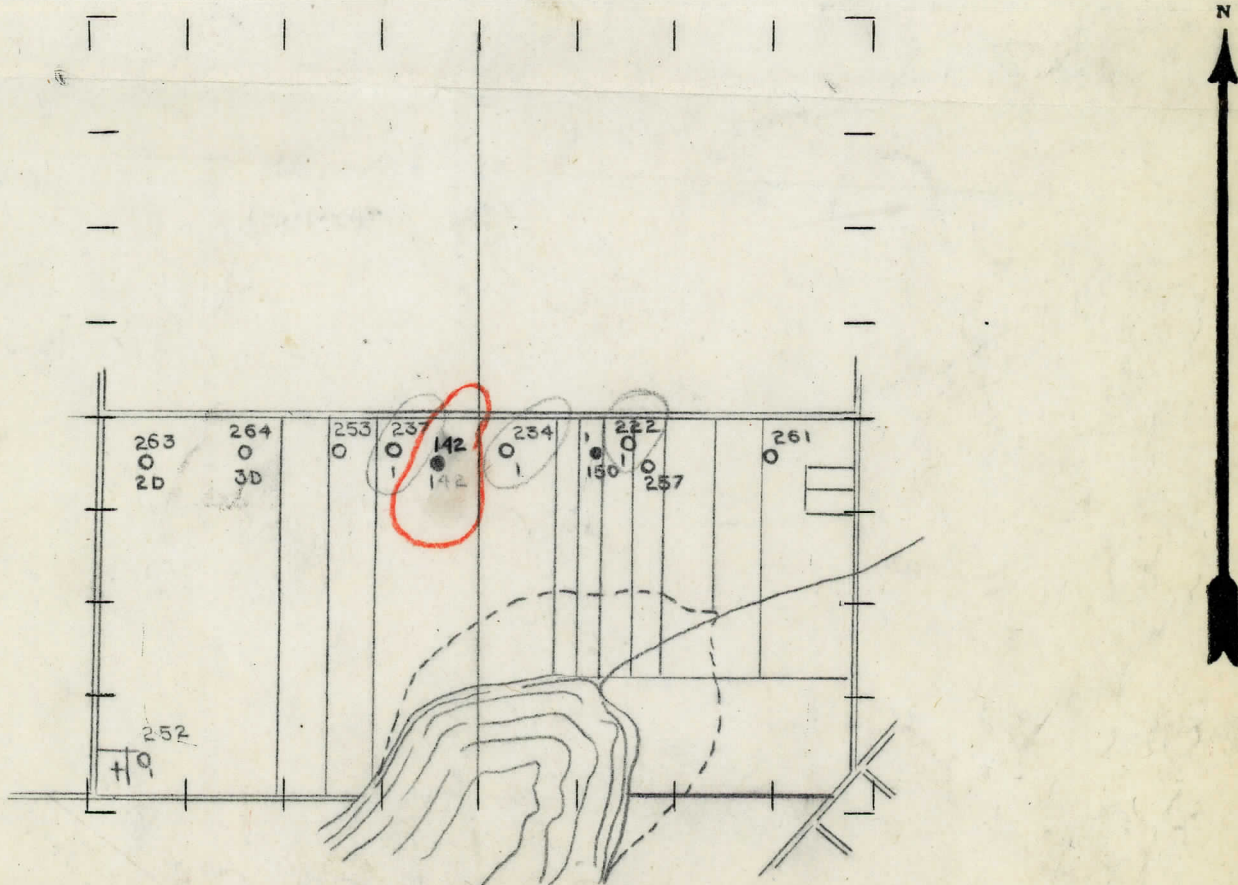
NAME OF STREAM OR WATERS QUADRANGLE

OPERATOR WITT & NELSON MAP

350 Feet from North Line of Farm
250 " " East " " "
" " South " " "
" " West " " "
Feet from North Line of Section
" " East " " "
" " South " " "
" " West " " "

- LEGEND**
- | | |
|------------------|----------------------|
| ○ LOCATION | ⊙ DRY HOLE |
| ① RIG | ⊕ DRY SHOWING OIL |
| ⊕ DRILLING | ⊙ DRY SHOWING GAS |
| ⊙ GAS WELL | ⊙ ABANDONED LOCATION |
| ● OIL WELL | ⊙ ABANDONED GAS WELL |
| ⊙ SMALL OIL WELL | ⊙ ABANDONED OIL WELL |

NOTE: Below make tracing from map, (when no map is obtainable make sketch) showing farm, center of section, this location with measurements and also wells, dry holes, or other locations in the vicinity of this location. Make copy to keep for reference and send original to Columbus office.



REMARKS:
THIS PLAT SERVES AS CORETED LOCATION
FOR WELLS No. 142-222+234+237

SIGNED

Superintendent or Foreman.

STATE Michigan COUNTY Muskegon DIST. Laketon
TWP. Laketon SEC. 12 TOWN 10N RANGE 17W
PREC.

NAME OF STREAM OR WATERS _____ QUADRANGLE _____

LOCATION REPORT SENT IN (DATE) Oct. 27th 1928

WELL STARTED (DATE) Oct. 1928 WELL COMPLETED (DATE) Jan. 13th 1929

GAS WELL

DRY HOLE

ABANDONED WELL

WELL RECORD

DATE OF SHOT _____ NUMBER OF QUARTS _____

1st 24 HOURS PRODUCTION _____ BARRELS OR FEET _____

[illegible][illegible][illegible]

5th " " " _____ Plugged and abandoned 2-13-40. " " "

SAND AND CASING

[illegible]

SIGNED _____ SUPT. OR FOREMAN