



Western Michigan University
ScholarWorks at WMU

Legacy Scout Tickets from Pure Oil Company

8-20-2021

**MGRRE_PureOilScoutTickets_Alvin R.
Taggart_2_21121002010000**

MGRRE
Western Michigan University

Follow this and additional works at: <https://scholarworks.wmich.edu/pure>



Part of the Geology Commons

WMU ScholarWorks Citation

MGRRE, "MGRRE_PureOilScoutTickets_Alvin R. Taggart_2_21121002010000" (2021). *Legacy Scout Tickets from Pure Oil Company*. 7015.
<https://scholarworks.wmich.edu/pure/7015>

This Document is brought to you for free and open access via ScholarWorks at WMU. It has been accepted for inclusion in Legacy Scout Tickets from Pure Oil Company by an authorized administrator of ScholarWorks at WMU. See the National Digital Catalogue - Science Base Catalogue for more collections submitted by MGRRE.



MGRRE_PureOilScoutTickets_Alvin R. Taggart_2_21121002010000

API 21121002010000

Permit Number 201

Lease Name Alvin R. Taggart

Well Number 2

County Muskegon

Township 10N

Range 16W

Section 5

2021 DEQ or Pure co_name Cochran, A .S.

Pure Number 152

Latitude 43.27959

Longitude -86.22795

DATE February 21, 1941

THE PURE OIL COMPANY

THE LOCATION REPORT

No. 152

STATE Michigan COUNTY Muskegon ~~DIST~~ TWP. Muskegon SEC. 5 TOWN 10 N RANGE 16 W
 WELL No. 2 (SERIAL No. 152) FARM A. R. Taggart ACRES _____
 NAME OF STREAM OR WATERS _____ QUADRANGLE ?
 OPERATOR A. S. Cochran Map Muskegon Township, Muskegon County

Feet from North Line of Farm

" " East " " "

" " South " " "

" " West " " "

Feet from North Line of Section

" " East " " "

" " South " " "

" " West " " "

LEGEND

○ LOCATION

① RIG

⊕ DRILLING

☼ GAS WELL

● OIL WELL

● SMALL OIL WELL

⊙ DRY HOLE

⊙ DRY SHOWING OIL

⊙ DRY SHOWING GAS

⊙ ABANDONED LOCATION

⊙ ABANDONED GAS WELL

⊙ ABANDONED OIL WELL

NOTE: Below make tracing from map, (when no map is obtainable make sketch) showing farm, center of section, this location with measurements and also wells, dry holes, or other locations in the vicinity of this location.

Plugged and abandoned 7-19-40.

Total Depth 2285'.

REMARKS:

SIGNED

Superintendent or Foreman.

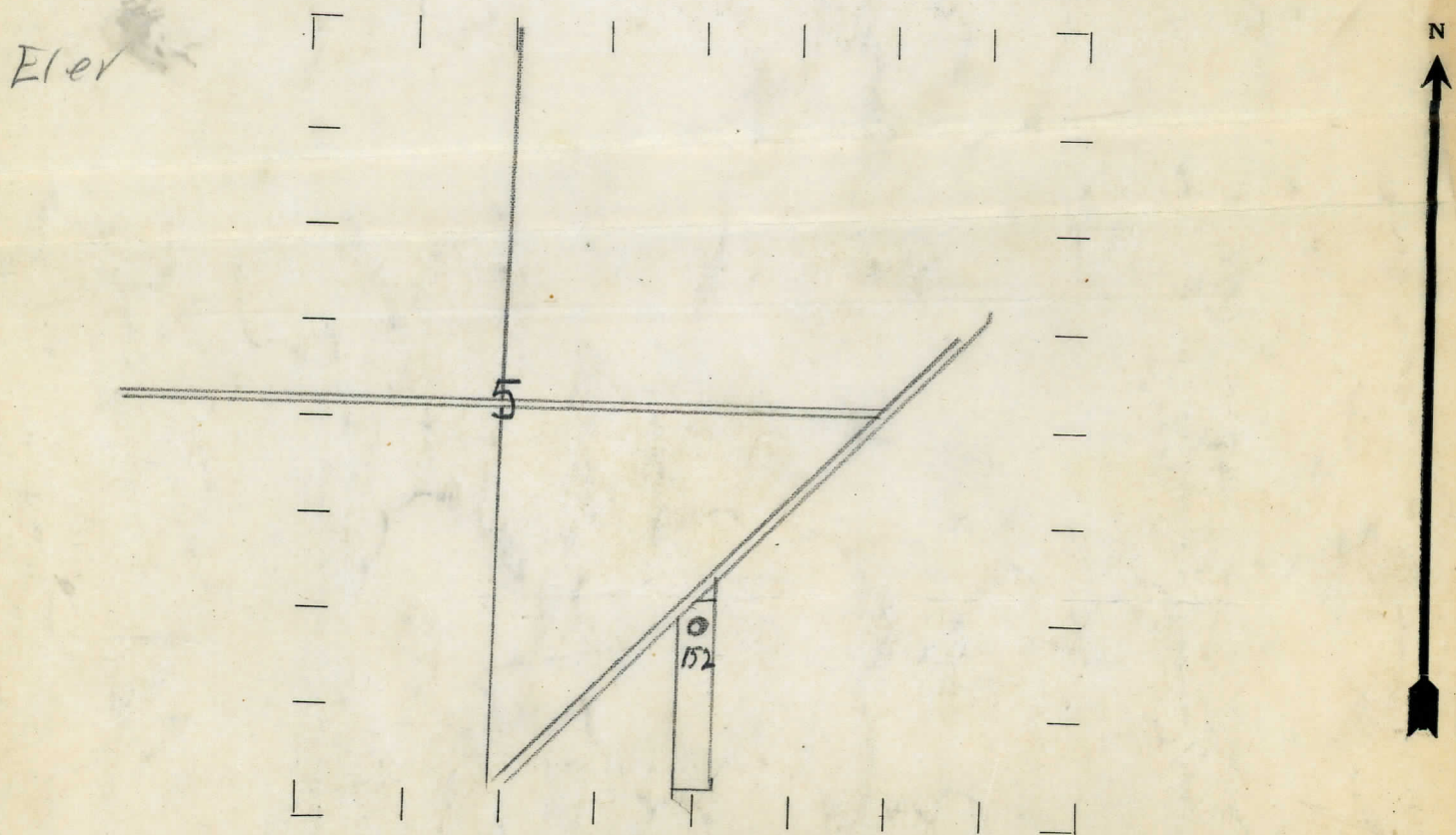
COMPLETION RECORD
THE PURE OIL COMPANY
LOCATION REPORT
No. 152.

STATE MICHIGAN COUNTY MUSKEGON DIST MUSKEGON SEC 5 TOWN 10 N RANGE 16 W
WELL No. TWO (SERIAL No. 152) FARM A. R. TAGGART. 5 ACRES
NAME OF STREAM OR WATERS... QUADRANGLE NW SE sec. 5.
OPERATOR A. S. COCHRAN. MAP MUSKEGON AREA.

175 Feet from North Line of Farm
" " East " " "
" " South " " "
99 " " West " " "
Feet from North Line of Section
" " East " " "
" " South " " "
" " West " " "

- LEGEND
- LOCATION
 - ⊙ RIG
 - ⊕ DRILLING
 - ⊗ GAS WELL
 - OIL WELL
 - ⬤ SMALL OIL WELL
 - ⬢ DRY HOLE
 - ⬢ DRY SHOWING OIL
 - ⬢ DRY SHOWING GAS
 - ⬢ ABANDONED LOCATION
 - ⬢ ABANDONED GAS WELL
 - ⬢ ABANDONED OIL WELL

NOTE: Below make tracing from map (when no map is obtainable make sketch), showing farm, center of section, this location measurements and also wells, dry holes, or other locations in the vicinity of this location. Make copy to keep for reference and send original to Columbus office.



REMARKS:
SIGNED
Superintendent or Foreman.

DATE Feb 11/1928 COUNTY Muskegon DIST. Muskegon SEC. 5 TOWN 10 N RANGE 13 W
STATE Michigan PREC.
WELL No. 1 (SERIAL No. 152) FARM A.R. Taggart ACRES
NAME OF STREAM OR WATERS QUADRANGLE
OPERATOR A.S. Cochran et al MAP
LOCATION REPORT SENT IN (DATE) November 10th, 1928.

WELL STARTED (DATE) WELL COMPLETED (DATE) December 22nd, 1928.

☐ OIL WELL

☐ GAS WELL

☐ DRY HOLE

☐ ABANDONED WELL

CROSS OUT THREE OF THE ABOVE
WELL RECORD

DATE OF SHOT NUMBER OF QUARTS
1st 24 HOURS PRODUCTION 7 million gals BARRELS OR FEET
2nd " " " " " "
3rd " " " " " "
4th " " " " " "
5th " " " " " "

SAND AND CASING

CASING SIZE	WEIGHT	CASING Feet Inches	SAND Name and Nature	TOP	BOTTOM	TOP PAY	BOTTOM PAY	SALT WATER
242' 10"			Sand	0	50			
326' 8 1/2"			Clay & sand	50	242			
2029' 6 5/8"			Mar. sand	242	326	Wh. slate 1640	1660	
			Blue clay	326	565			
			Lime	565	645	Trav. 1660	1686	
			Blue slate	645	860	Oil 1680		
			Red lime	860	900	Hd. lime 1686	1790	
			Lime shells			Water 1790	1908	
			& bl. slate	900	1208	Lime & sand 1906	1955	
			Berea	1208	1236	Water 1955	hole full.	
			Blue slate &			lime 1955	2029	
REMARKS			lime shells	1236	1420	Slate ? 2029	2034	
			Br. shale	1420	1560	Dundee Lime 2035	2044	
			Br. shale &			Gas 2044	2046	
			Lime shells	1560	1640	" 2046	2059	
						Oil 2059		
						More oil 2061'	Total depth.	

NOTE:—MAKE COPY TO KEEP FOR REFERENCE AND SEND ORIGINAL TO CHICAGO OFFICE. LIST MATERIAL CHARGEABLE TO WELL ON OTHER SIDE.

SIGNED

SUPT. OR FOREMAN

NAME OF LEASE	Autho. No.	Well No.	DEPTH		FORMATION	REMARKS
			From	To		
A. S. Cochran et al. A. R. TAGGART #2. OUR #152.						
			1	50	Sand.	
			50	242	Clay and sand.	
			242	326	Marshall sand.	
			326	585	Blue clay.	
			585	645	Lime.	
			645	860	Blue slate.	
			860	900	Red Lime.	
			900	1208	Lime shell & Blue slate.	
			1208	1238	Berea Sand.	
			1238	1420	Blue slate & Lime shell.	
			1420	1580	Brown shale.	
			1580	1640	Brown shale & Lime shell.	
			1640	1660	White slate.	
			1660	1686	Traverse Sand.	
			SHOWING OF OIL AT 1680'.			
			1686	1790	Hard Lime.	
			1790	1908	Water.	
			1908	1955	Lime & Sand.	
			1955	HOLE	FULL OF WATER.	
			1955	2029	Lime.	
			2029	2034	Slate or Shale.	
			2034	2044	Lime.	
			2044	---GAS.		
			2046	---		
			2048	---		
			2054	---		
			2056	---		
			2059	---SHOW OF OIL.		
			2061	---MORE OIL.		
			CASING RECORD.			
			10"--Drive--242'.			
			8 1/4" Casing--326'.			
			6 5/8" " --2029'.			
			COMPLETED DECEMBER 16, 1928.			

