



Western Michigan University
ScholarWorks at WMU

Legacy Scout Tickets from Pure Oil Company

8-20-2021

**MGRRE_PureOilScoutTickets_Becker
Brothers_2_21121002770000**

MGRRE
Western Michigan University

Follow this and additional works at: <https://scholarworks.wmich.edu/pure>



Part of the Geology Commons

WMU ScholarWorks Citation

MGRRE, "MGRRE_PureOilScoutTickets_Becker Brothers_2_21121002770000" (2021). *Legacy Scout Tickets from Pure Oil Company*. 7025.
<https://scholarworks.wmich.edu/pure/7025>

This Document is brought to you for free and open access via ScholarWorks at WMU. It has been accepted for inclusion in Legacy Scout Tickets from Pure Oil Company by an authorized administrator of ScholarWorks at WMU. See the National Digital Catalogue - Science Base Catalogue for more collections submitted by MGRRE.



MGRRE_PureOilScoutTickets_Becker Brothers_2_21121002770000

API 21121002770000

Permit Number 277

Lease Name Becker Brothers

Well Number 2

County Muskegon

Township 10N

Range 16W

Section 4

2021 DEQ or Pure co_name Muskegon Oil Corporation

Pure Number 162

Latitude 43.28332

Longitude -86.2228

DATE

11/10/28

THE PURE OIL COMPANY

LOCATION REPORT

No. 162

STATE

MICHIGAN

COUNTY

MUSKEGON

DIST

MUSKEGON

SEC.

4

TOWN

10 N

RANGE

16 W

WELL No.

2

(SERIAL No.)

162

FARM

O & A. BECKER

ACRES

NAME OF STREAM OR WATERS

MUSKEGON OIL CO.

QUADRANGLE

NW-SW SEC. 4

OPERATOR

MAP

MUSKEGON AREA

Feet from North Line of Farm

" " East " " "

" " South " " "

" " West " " "

Feet from North Line of Section

" " East " " "

" " South " " "

" " West " " "

LEGEND

O LOCATION

① RIG

⊕ DRILLING

⊗ GAS WELL

● OIL WELL

⊙ SMALL OIL WELL

⊕ DRY HOLE

⊕ DRY SHOWING OIL

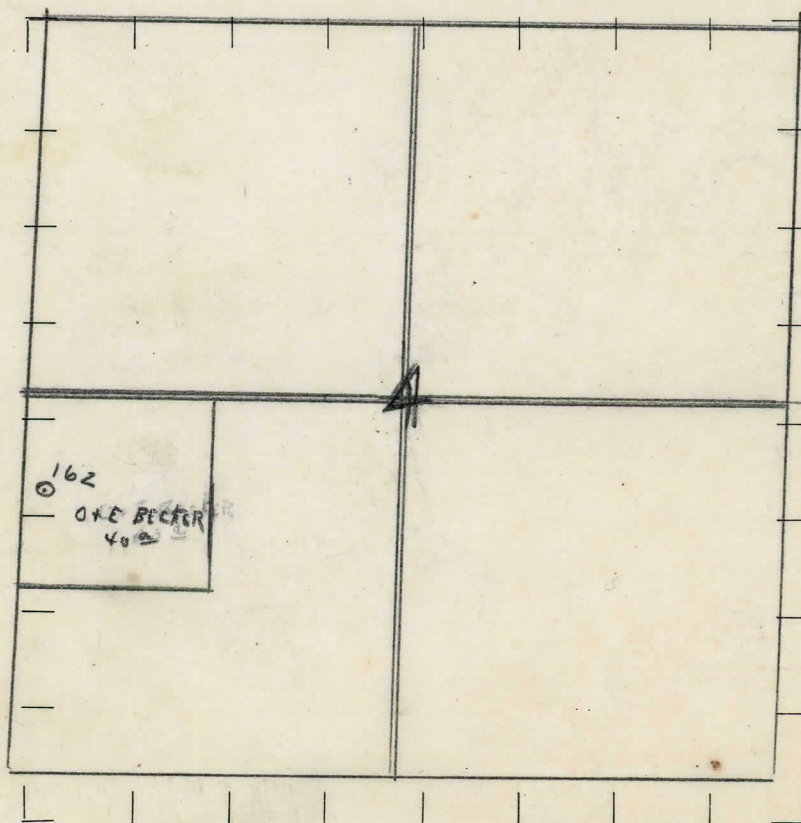
⊗ DRY SHOWING GAS

⊙ ABANDONED LOCATION

⊗ ABANDONED GAS WELL

⊙ ABANDONED OIL WELL

NOTE: Below make tracing from map (when no map is obtainable make sketch), showing farm, center of section, this location with measurements and also wells, dry holes, or other locations in the vicinity of this location. Make copy to keep for reference and send original to Columbus office.



REMARKS:

SIGNED

Superintendent or Foreman.

Saginaw Michigan Special

DATE **Jan. 12th 1929**

DIVISION

COMPLETION RECORD

No. 162

STATE Michigan COUNTY Muskegon DIST. Muskegon TWP. Muskegon SEC. 4 TOWN 10N RANGE 16W

WELL No. 2 (SERIAL No. 16 2) FARM O & A Becker ACRES

NAME OF STREAM OR WATERS	QUADRANGLE
--------------------------	------------

OPERATOR Muskegon Oil Co. MAP Muskegon Twp. Muskegon Co.

LOCATION REPORT SENT IN (DATE) Nov. 10th 1928

WELL STARTED (DATE) Nov. 1928 WELL COMPLETED (DATE) Jan. 12th 1929

XXXXXXXXXX

~~XXXXXX~~ GAS WELL

DRY HOLE

ABANDONED WELL

**CROSS OUT THREE OF THE ABOVE
WELL RECORD**

DATE OF SHOT _____ NUMBER OF QUARTS _____

1st 24 HOURS PRODUCTION _____ BARRELS OR FEET _____

2nd " " " " " "

3rd " " " " " "

4th " " " " " " " "

5th " " " " " " "

SAND AND CASING

[illegible]

REMARKS _____

--	--	--	--	--	--	--

[illegible]

NOTE:—MAKE COPY TO KEEP FOR REFERENCE AND SEND ORIGINAL TO CHICAGO

OFFICE. LIST MATERIAL CHARGEABLE TO WELL ON OTHER SIDE, SIGNED _____ SUPT. OR FOREMAN

SOFT. OR FOREMAN

DESCRIPTION	QUANTITY	MAKE	SIZE	MATERIAL
-------------	----------	------	------	----------

STATE MICHIGAN COUNTY MUSKEGON DIST MUSKEGON SEC. 4 TOWN 10-N RANGE 16-W.
WELL No. TWO (2) SERIAL No. 162 FARM O & A. BECKER ACRES
NAME OF STREAM OR WATERS QUADRANGLE NW SW sec. 4-10-16-W
OPERATOR MUSKEGON OIL CORPORATION MAP MUSKEGON AREA

625 Feet from North Line of Farm

" " East " " "

" " South " " "

100 " " West " " "

Feet from North Line of Section

" " East " " "

2015 " " South " " "

100 " " West " " "

LEGEND

○ LOCATION

① RIG

⊕ DRILLING

⊙ GAS WELL

● OIL WELL

⦿ SMALL OIL WELL

⊕ DRY HOLE

⦿ DRY SHOWING OIL

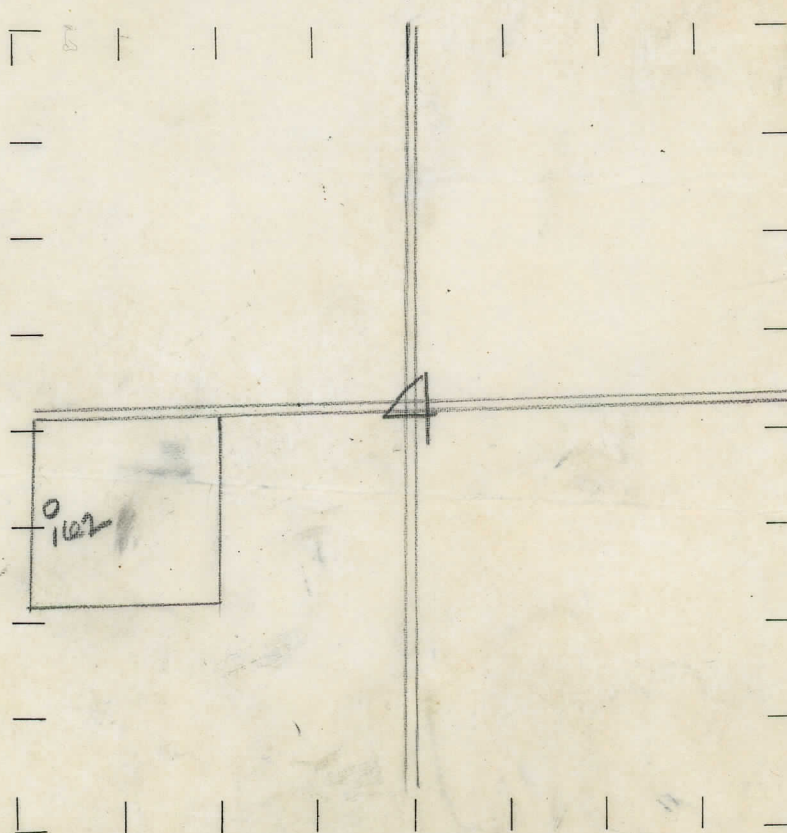
⦿ DRY SHOWING GAS

⦿ ABANDONED LOCATION

⦿ ABANDONED GAS WELL

⦿ ABANDONED OIL WELL

NOTE: Below make tracing from map (when no map is obtainable make sketch), showing farm, center of section, this location with measurements and also wells, dry holes, or other locations in the vicinity of this location. Make copy to keep for reference and send original to Columbus office.



REMARKS:

SIGNED

Superintendent or Foreman.