



Western Michigan University  
ScholarWorks at WMU

---

Legacy Scout Tickets from Pure Oil Company

---

8-20-2021

## MGRRE\_PureOilScoutTickets\_Bowsuma, J.\_1\_unk

MGRRE

*Western Michigan University*

Follow this and additional works at: <https://scholarworks.wmich.edu/pure>



Part of the Geology Commons

---

### WMU ScholarWorks Citation

MGRRE, "MGRRE\_PureOilScoutTickets\_Bowsuma, J.\_1\_unk" (2021). *Legacy Scout Tickets from Pure Oil Company*. 7026.

<https://scholarworks.wmich.edu/pure/7026>

This Document is brought to you for free and open access via ScholarWorks at WMU. It has been accepted for inclusion in Legacy Scout Tickets from Pure Oil Company by an authorized administrator of ScholarWorks at WMU. See the National Digital Catalogue - Science Base Catalogue for more collections submitted by MGRRE.



---

## MGRRE\_PureOilScoutTickets\_Bowsuma, J.\_1\_unk

API unk

Permit Number unk

Lease Name Bowsuma, J.

Well Number 1

County Muskegon

Township 10N

Range 16W

Section 4

2021 DEQ or Pure co\_name McAfee & Refrior

Pure Number 163

Latitude 43.2865003

Longitude -86.2135638

THE PURE OIL COMPANY

DATE 1-19-29

## LOCATION REPORT

No. 163STATE MICH COUNTY Muskegon DIST. Muskegon TWP. Muskegon SEC. 4 TOWN 10 N RANGE 16 W  
WELL No. 163 (SERIAL No. 163) FARM Consuma ACRES

NAME OF STREAM OR WATERS QUADRANGLE

OPERATOR McAfee & Refior MAP

Feet from North Line of Farm

" " East " " "

" " South " " "

" " West " " "

Feet from North Line of Section

" " East " " "

" " South " " "

" " West " " "

## LEGEND

O LOCATION

① RIG

⊕ DRILLING

⊗ GAS WELL

● OIL WELL

⦿ SMALL OIL WELL

⊖ DRY HOLE

⦿ DRY SHOWING OIL

⦿ DRY SHOWING GAS

⦿ ABANDONED LOCATION

⦿ ABANDONED GAS WELL

⦿ ABANDONED OIL WELL

NOTE: Below make tracing from map, (when no map is obtainable make sketch) showing farm, center of section, this location with measurements and also wells, dry holes, or other locations in the vicinity of this location. Make copy to keep for reference and send original to Columbus office.

SEE PLAT FOR CORRECTED  
LOCATION OF # 84

REMARKS:

SIGNED

Superintendent or Foreman.

Two May 1930

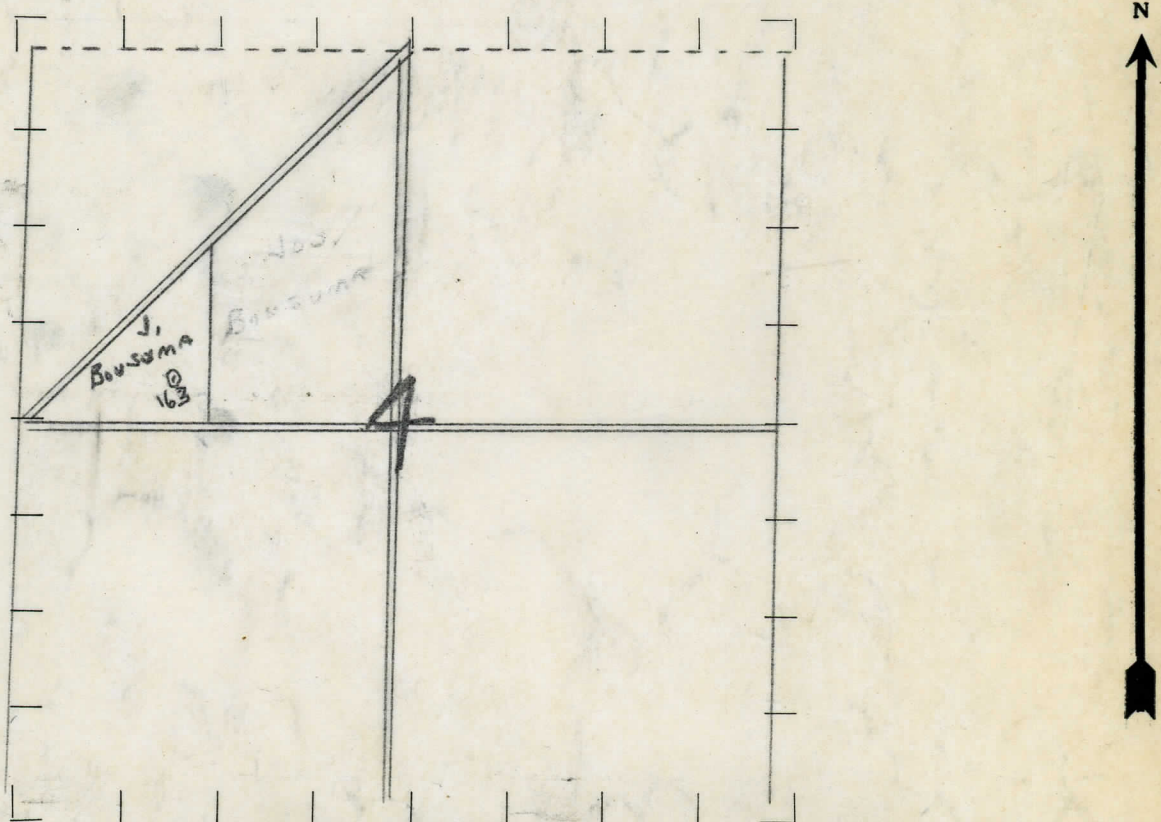


DATE 4/10/28 LOCATION REPORT No. 162  
 STATE Michigan COUNTY Missaukee DIST Missaukee SEC. 4 TOWN 10N RANGE 16W  
 WELL No. 1 (SERIAL No. 163) FARM J. BOWSUMA ACRES  
 NAME OF STREAM OR WATERS QUADRANGLE SE COR. NW NW  
 OPERATOR MC ALEE & REFIOR MAP Missaukee AREA

Feet from North Line of Farm  
250 " " East " " "  
250 " " South " " "  
 " " West " " "  
 Feet from North Line of Section  
 " " East " " "  
2890 " " South " " "  
1070 " " West " " "

- LEGEND**
- O LOCATION
  - ① RIG
  - ⊕ DRILLING
  - ⊙ GAS WELL
  - OIL WELL
  - ⦿ SMALL OIL WELL
  - ⦿ DRY HOLE
  - ⦿ DRY SHOWING OIL
  - ⦿ DRY SHOWING GAS
  - ⦿ ABANDONED LOCATION
  - ⦿ ABANDONED GAS WELL
  - ⦿ ABANDONED OIL WELL

NOTE: Below make tracing from map (when no map is obtainable make sketch), showing farm, center of section, this location with measurements and also wells, dry holes, or other locations in the vicinity of this location. Make copy to keep for reference and send original to Columbus office.



REMARKS:

-----

-----

-----

SIGNED

-----

Superintendent or Foreman.



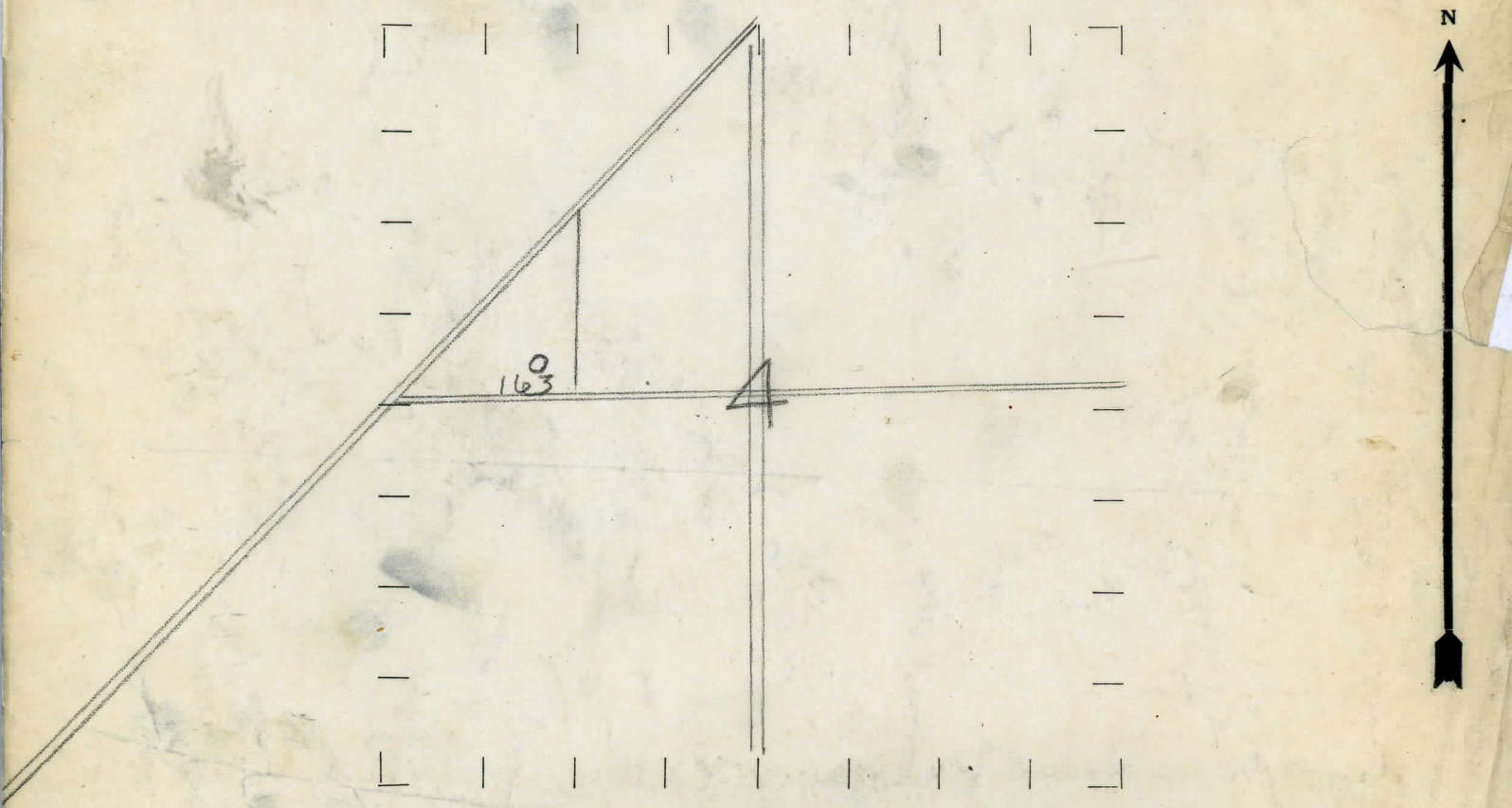
DATE 11/8/28 LOCATION REPORT No. 109

STATE MICHIGAN COUNTY MUSKEGON DIST TWP. MUSKEGON SEC. 4 TOWN 10-N RANGE 16-W. PREC. Jos. Bouwsma. ACRES  
WELL NO. ONE (1) (SERIAL No. 163) FARM Jos. Bouwsma. ACRES  
NAME OF STREAM OR WATERS QUADRANGLE SE. cor. NW NW sec. 4- (10-16-W.)  
OPERATOR McAfee & Refior. MAP muskegon area.

Feet from North Line of Farm  
250 " " East " " " ✓  
250 " " South " " " ✓  
" " West " " " ✓  
Feet from North Line of Section  
2890 " " East " " " ✓  
1070 " " South " " " ✓  
1070 " " West " " " ✓

- LEGEND**
- LOCATION
  - ① RIG
  - ⊕ DRILLING
  - ⊗ GAS WELL
  - OIL WELL
  - ⬮ SMALL OIL WELL
  - ⬮ DRY HOLE
  - ⬮ DRY SHOWING OIL
  - ⬮ DRY SHOWING GAS
  - ⬮ ABANDONED LOCATION
  - ⬮ ABANDONED GAS WELL
  - ⬮ ABANDONED OIL WELL

NOTE: Below make tracing from map (when no map is obtainable make sketch), showing farm, center of section, this location with measurements and also wells, dry holes, or other locations in the vicinity of this location. Make copy to keep for reference and send original to Columbus office.



REMARKS:

SIGNED  
Superintendent or Foreman.



# Michigan Producing DIVISION COMPLETION RECORD

STATE Michigan COUNTY Muskegon DIST. Muskegon SEC. 4 TOWN 10 N RANGE 16 W  
TWP. Muskegon PREC. \_\_\_\_\_

NAME OF STREAM OR WATERS \_\_\_\_\_ QUADRANGLE \_\_\_\_\_

OPERATOR	McAfee & Refrrior	MAP	Muskegon Area
----------	-------------------	-----	---------------

LOCATION REPORT SENT IN (DATE) November 10, 1928.

WELL STARTED (DATE) November 1928. WELL COMPLETED (DATE) June 28th, 1930.

CASWELL

## DRY HOLE

## ABANDONED WELL

CROSS OUT THREE OF THE ABOVE  
WELL RECORD

DATE OF SHOT \_\_\_\_\_ NUMBER OF QUARTS \_\_\_\_\_

1st 24 HOURS PRODUCTION	dry	BARRELS OR FEET
-------------------------	-----	-----------------

[illegible]

3rd " " " " " "

4th " " " " " "

5th " " " " " "

## SAND AND CASING

REMARKS No record of well kept. Drilled by F.M.Gray,Jr.-Rig moved off-well not plugged.

**SIGNED**

**SUPT. OR FOREMAN**