



Western Michigan University
ScholarWorks at WMU

Legacy Scout Tickets from Pure Oil Company

8-20-2021

MGRRE_PureOilScoutTickets_Berkema_1_21121002340000

MGRRE

Western Michigan University

Follow this and additional works at: <https://scholarworks.wmich.edu/pure>



Part of the Geology Commons

WMU ScholarWorks Citation

MGRRE, "MGRRE_PureOilScoutTickets_Berkema_1_21121002340000" (2021). *Legacy Scout Tickets from Pure Oil Company*. 7036.

<https://scholarworks.wmich.edu/pure/7036>

This Document is brought to you for free and open access via ScholarWorks at WMU. It has been accepted for inclusion in Legacy Scout Tickets from Pure Oil Company by an authorized administrator of ScholarWorks at WMU. See the National Digital Catalogue - Science Base Catalogue for more collections submitted by MGRRE.



MGRRE_PureOilScoutTickets_Berkema_1_21121002340000

API 21121002340000

Permit Number 234

Lease Name Berkema

Well Number 1

County Muskegon

Township 10N

Range 16W

Section 8

2021 DEQ or Pure co_name Swastika Oil and Gas Company

Pure Number 173

Latitude 43.27402

Longitude -86.24188

THE PURE OIL COMPANY

DATE Nov. 24th 1928

LOCATION REPORT

No. 173STATE Michigan COUNTY Muskegon DIST TWP. Muskegon SEC. 8 TOWN 10N RANGE 16WWELL No. 1 (SERIAL No. 173) FARM Martin Berkema ACRES

NAME OF STREAM OR WATERS QUADRANGLE

OPERATOR Kitchen-Warren MAP Muskegon Twp Muskegon Co.

Feet from North Line of Farm

" " East " " "

" " South " " "

" " West " " "

1470 Feet from North Line of Section

" " East " " "

" " South " " "

450 " " West " " "

LEGEND

O LOCATION

① RIG

⊕ DRILLING

⊗ GAS WELL

● OIL WELL

⬮ SMALL OIL WELL

⬮ DRY HOLE

⬮ DRY SHOWING OIL

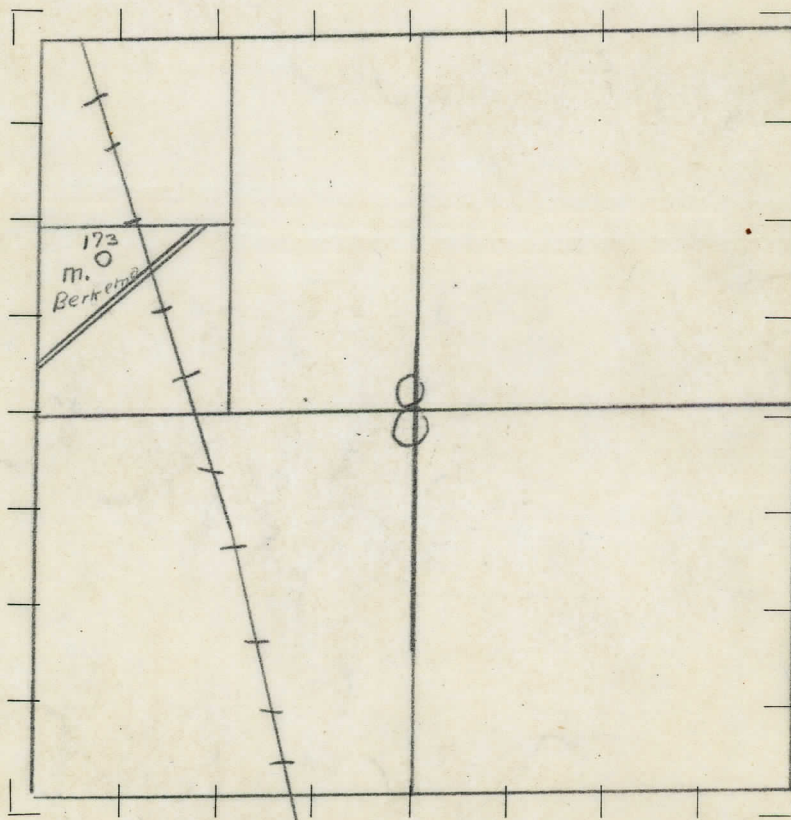
⬮ DRY SHOWING GAS

⬮ ABANDONED LOCATION

⬮ ABANDONED GAS WELL

⬮ ABANDONED OIL WELL

NOTE: Below make tracing from map (when no map is obtainable make sketch), showing farm, center of section, this location with measurements and also wells, dry holes, or other locations in the vicinity of this location. Make copy to keep for reference and send original to Columbus office.



REMARKS:

SIGNED

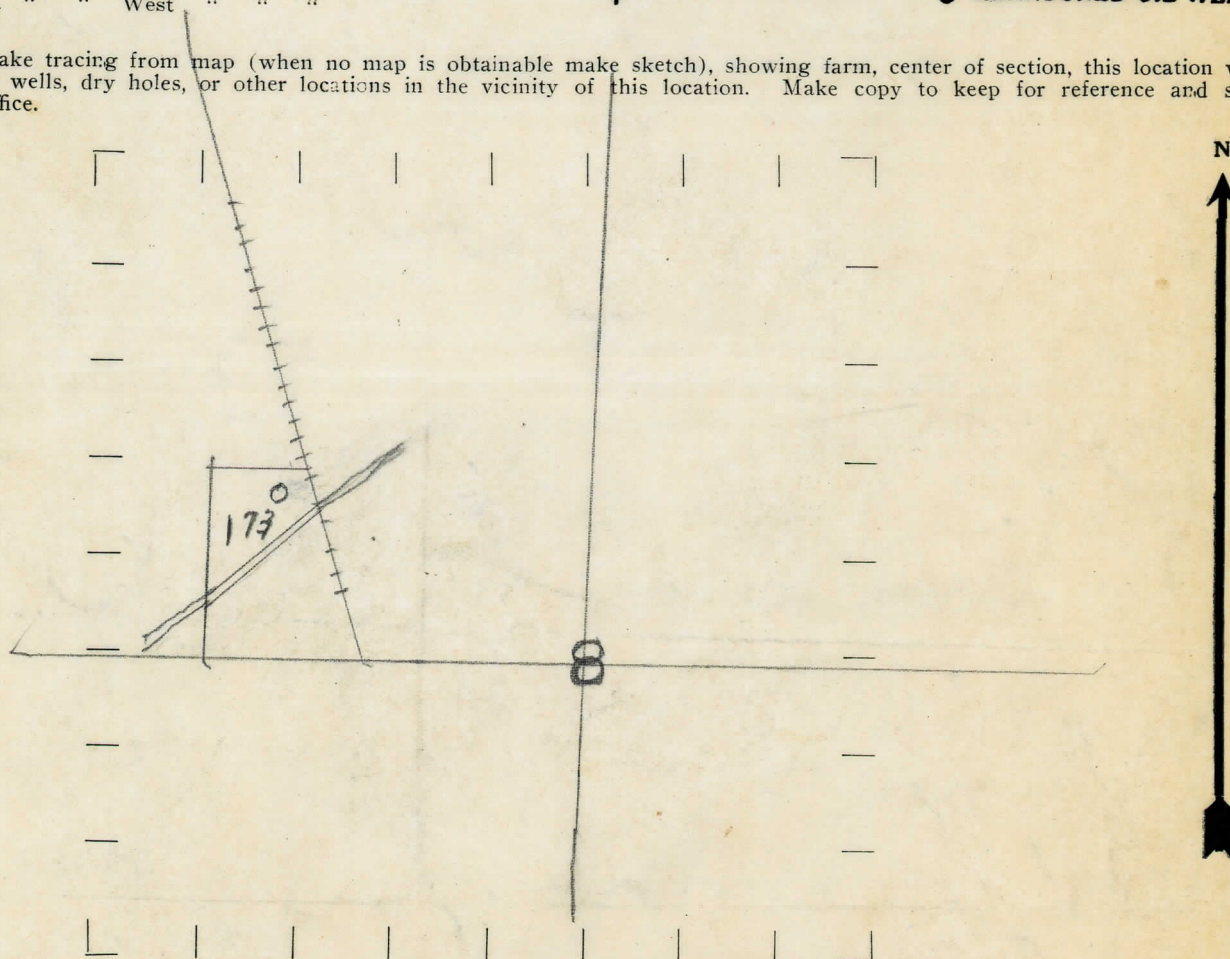
Superintendent or Foreman.

STATE MICHIGAN COUNTY MUSKEGON DIST MUSKEGON SEC. 8 TOWN 10-N RANGE 16-W.
WELL No ONE (1) (SERIAL No. 173) FARM MARTIN BERKEMA ACRES
NAME OF STREAM OR WATERS QUADRANGLE NW cor. SW of NW sec.
OPERATOR KITCHEN & WARREN MAP MUSKEGON AREA

Feet from North Line of Farm
250 " " East " " "
300 " " South " " "
" " West " " "
1470 Feet from North Line of Section
" " East " " "
" " South " " "
450 " " West " " "

- LEGEND**
- | | |
|------------------|----------------------|
| ○ LOCATION | ⬮ DRY HOLE |
| ① RIG | ⬮ DRY SHOWING OIL |
| ⊕ DRILLING | ⬮ DRY SHOWING GAS |
| ⊗ GAS WELL | ⬮ ABANDONED LOCATION |
| ● OIL WELL | ⬮ ABANDONED GAS WELL |
| ⬮ SMALL OIL WELL | ⬮ ABANDONED OIL WELL |

NOTE: Below make tracing from map (when no map is obtainable make sketch), showing farm, center of section, this location with measurements and also wells, dry holes, or other locations in the vicinity of this location. Make copy to keep for reference and send original to Columbus office.



REMARKS:

SIGNED

Superintendent or Foreman.

