



Western Michigan University
ScholarWorks at WMU

Legacy Scout Tickets from Pure Oil Company

8-20-2021

MGRRE_PureOilScoutTickets_Continental Motors Corporation_7_21121002750000

MGRRE
Western Michigan University

Follow this and additional works at: <https://scholarworks.wmich.edu/pure>



Part of the Geology Commons

WMU ScholarWorks Citation

MGRRE, "MGRRE_PureOilScoutTickets_Continental Motors Corporation_7_21121002750000" (2021).
Legacy Scout Tickets from Pure Oil Company. 7041.
<https://scholarworks.wmich.edu/pure/7041>

This Document is brought to you for free and open access via ScholarWorks at WMU. It has been accepted for inclusion in Legacy Scout Tickets from Pure Oil Company by an authorized administrator of ScholarWorks at WMU. See the National Digital Catalogue - Science Base Catalogue for more collections submitted by MGRRE.



**MGRRE_PureOilScoutTickets_Continental Motors
Corporation_7_21121002750000**

API 21121002750000

Permit Number 275

Lease Name Continental Motors Corporation

Well Number 7

County Muskegon

Township 10N

Range 16W

Section 15

2021 DEQ or Pure co_name Continental Motors Corporation

Pure Number 178

Latitude 43.24969

Longitude -86.19089

WELL REPORT - OUTSIDE OPERATIONS

SERIAL NO. 178

STATE Michigan ~~PAK~~ CO. Muskegon

OPERATOR Continental Motors Corp.

FARM Fee WELL NO. 7

TWP. ~~SURVEY~~ Muskegon S. 15 T. 10N R. 16W

LOC. SW SE

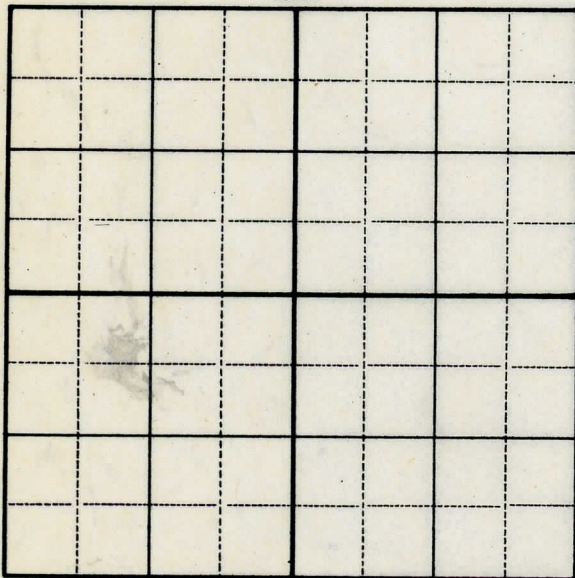
WILDCAT ☐ FIELD ☐ FIELD NAME

MAP NO. CO-ORD. ELEV.

STATUS Plugged and abandoned - 10-12-53

Total Depth - 1944'

NORTH



DATE 11-25-53 SCOUT JEC

DATE Dec 15th 1928

THE PURE OIL COMPANY

LOCATION REPORT

No. 178

STATE Michigan COUNTY Muskogean DIST. Muskogean SEC. 15 TOWN 10N RANGE 16W

WELL No. 7 (SERIAL No. 178) FARM Continental Motors Corp ACRES

NAME OF STREAM OR WATERS QUADRANGLE

OPERATOR Continental Motors Corp MAP Muskogean Twp Muskogean Co

Feet from North Line of Farm

" " East " " "

" " South " " "

" " West " " "

Feet from North Line of Section

1590 " " East " " "

350 " " South " " "

" " West " " "

LEGEND

○ LOCATION

⊕ RIG

⊕ DRILLING

⊗ GAS WELL

● OIL WELL

⬮ SMALL OIL WELL

⊗ DRY HOLE

⬮ DRY SHOWING OIL

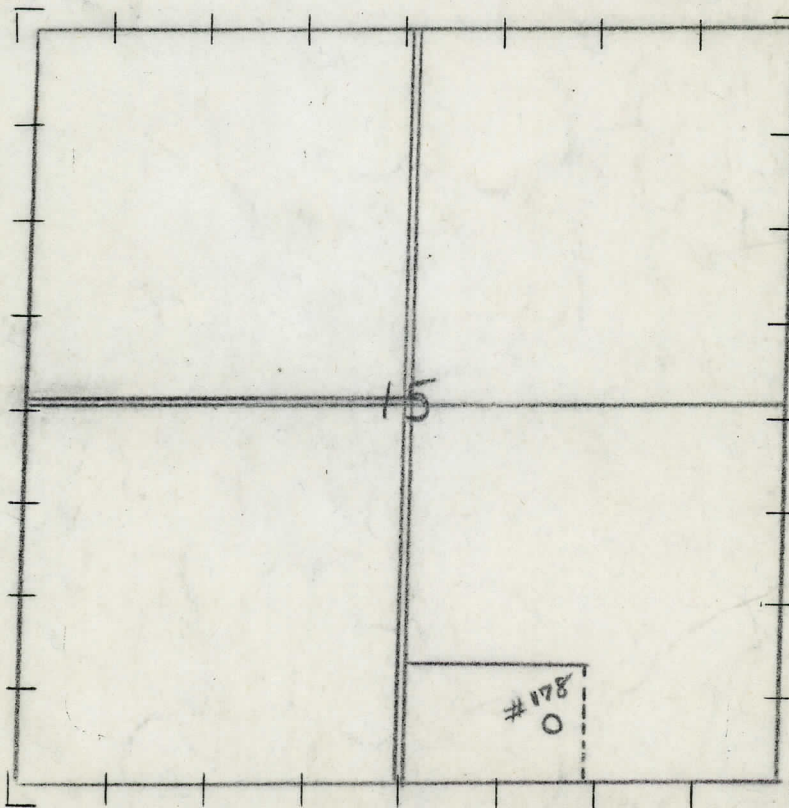
⊗ DRY SHOWING GAS

⊗ ABANDONED LOCATION

⬮ ABANDONED GAS WELL

⬮ ABANDONED OIL WELL

NOTE: Below make tracing from map, (when no map is obtainable make sketch) showing farm, center of section, this location with measurements and also wells, dry holes, or other locations in the vicinity of this location. Make copy to keep for reference and send original to Columbus office.



REMARKS:

SIGNED

Superintendent or Foreman.

MEET NO.

21VLE

DYLE

VOCEE

10M

EVNCE

10'

STATE Michigan COUNTY Muskegon DIST TWP. Muskegon SEC. 15 TOWN 10N RANGE 16W
WELL No. 7 (SERIAL No. 178) FARM Continental Motors Corp ACRES

NAME OF STREAM OR WATERS _____ QUADRANGLE _____

OPERATOR Continental Motors Corp MAP Muskegon Twp. Muskegon Co

_____ Feet from North Line of Farm

_____ " " East " " "

_____ " " South " " "

_____ " " West " " "

_____ Feet from North Line of Section

1590 " " East " " "

350 " " South " " "

_____ " " West " " "

LEGEND

○ LOCATION

① RIG

⊕ DRILLING

⊗ GAS WELL

● OIL WELL

⦿ SMALL OIL WELL

⦿ DRY HOLE

⦿ DRY SHOWING OIL

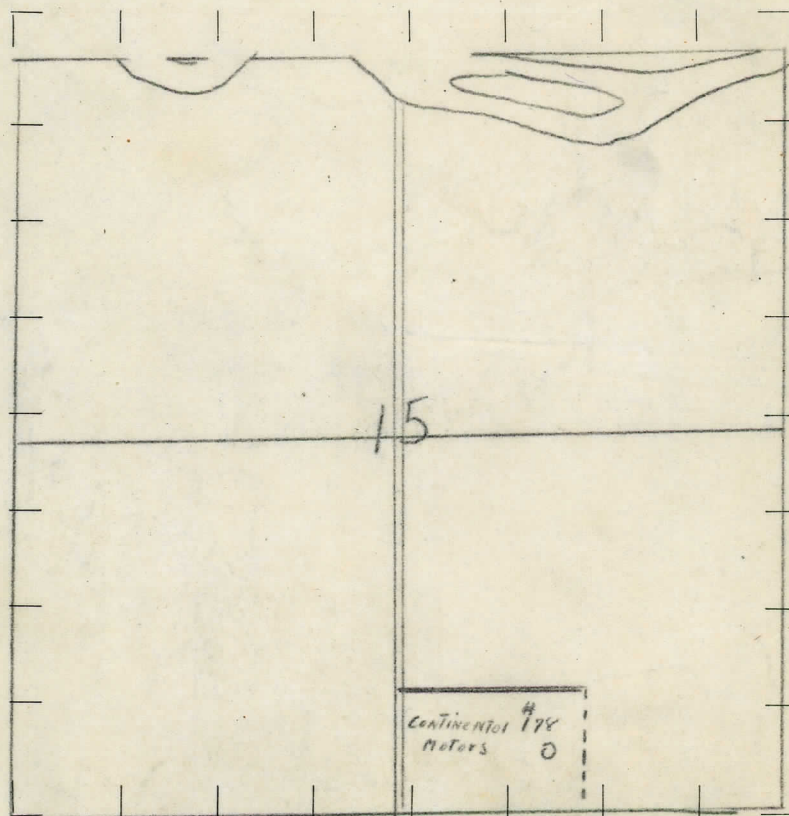
⦿ DRY SHOWING GAS

⦿ ABANDONED LOCATION

⦿ ABANDONED GAS WELL

⦿ ABANDONED OIL WELL

NOTE: Below make tracing from map (when no map is obtainable make sketch), showing farm, center of section, this location with measurements and also wells, dry holes, or other locations in the vicinity of this location. Make copy to keep for reference and send original to Columbus office.



REMARKS:

SIGNED

Superintendent or Foreman.

WELL No. 7 (SERIAL No. 178) FARM Continental Motor Corp. ACRES _____

NAME OF STREAM OR WATERS _____ QUADRANGLE _____

LOCATION REPORT SENT IN (DATE) Dec. 1st 1928

WELL STARTED (DATE) Dec. 1928 WELL COMPLETED (DATE) Jan. 12th 1929

CROSS OUT THREE OF THE ABOVE

DATE OF SHOT _____ NUMBER OF QUARTS _____

1st 24 HOURS PRODUCTION _____ BARRELS OR FEET

SAND AND CASING

[illegible]

STATE	COUNTY	DIST	SEC	TOWN	RANGE
MICHIGAN	MUSKEGON	MUSKEGON	15	10-N	16-W
WELL No.	(SERIAL No.)	FARM	ACRES		
6	178	CONTINENTAL MOTORS CORPORATION			
NAME OF STREAM OR WATERS		QUADRANGLE SW of SE of sec. 15.			
OPERATOR		MAP			
CONTINENTAL MOTORS CORPORATION.		MUSKEGON AREA.			

450 Feet from North Line of Farm

1050 Feet from North Line of Section

1580

350

East " " "

South " " "

West " " "

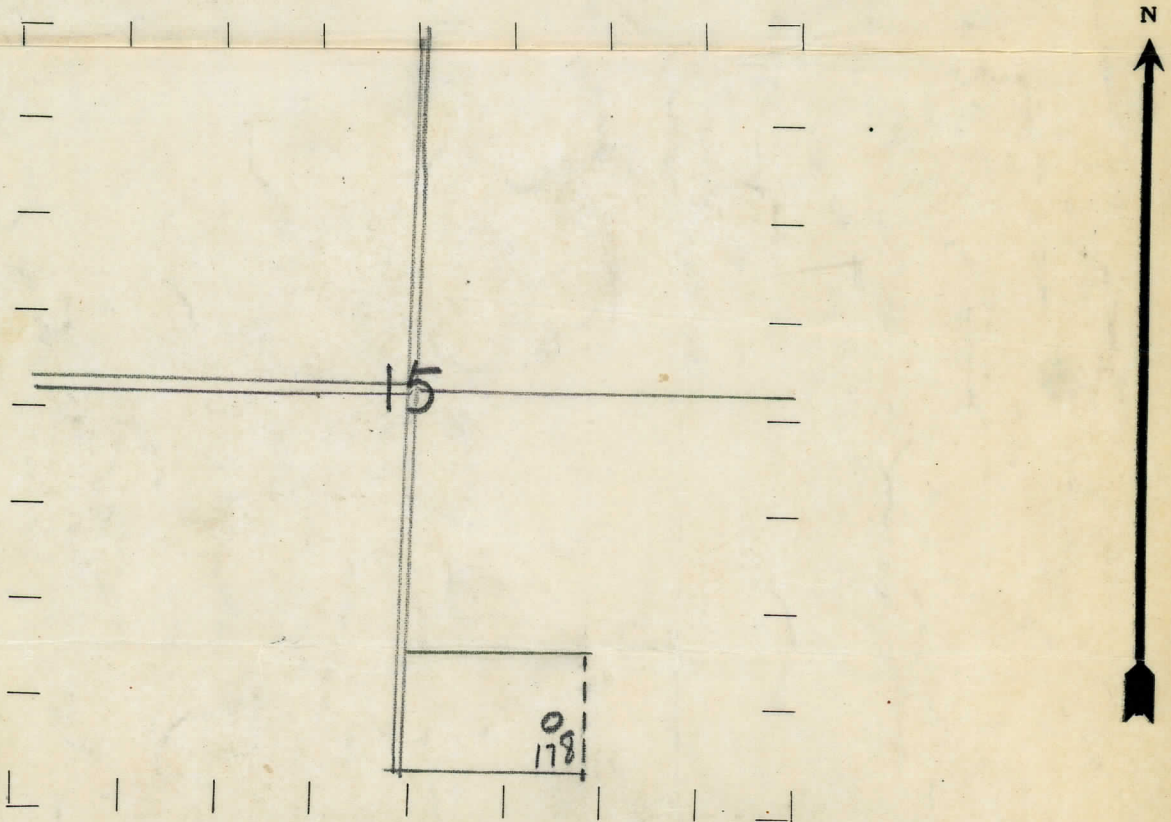
East " " "

South " " "

West " " "

- LEGEND**
- LOCATION
 - ① RIG
 - ⊕ DRILLING
 - ⊗ GAS WELL
 - OIL WELL
 - ⬮ SMALL OIL WELL
 - ⬮ DRY HOLE
 - ⬮ DRY SHOWING OIL
 - ⬮ DRY SHOWING GAS
 - ⬮ ABANDONED LOCATION
 - ⬮ ABANDONED GAS WELL
 - ⬮ ABANDONED OIL WELL

NOTE: Below make tracing from map (when no map is obtainable make sketch), showing farm, center of section, this location with measurements and also wells, dry holes, or other locations in the vicinity of this location. Make copy to keep for reference and send original to Columbus office.



REMARKS:

SIGNED

Superintendent or Foreman.

Signed.