



Western Michigan University  
ScholarWorks at WMU

---

Legacy Scout Tickets from Pure Oil Company

---

8-20-2021

**MGRRE\_PureOilScoutTickets\_Creek Land Dev Co aka Wittels  
H\_1\_21121002680000**

MGRRE  
*Western Michigan University*

Follow this and additional works at: <https://scholarworks.wmich.edu/pure>



Part of the Geology Commons

---

#### WMU ScholarWorks Citation

MGRRE, "MGRRE\_PureOilScoutTickets\_Creek Land Dev Co aka Wittels H\_1\_21121002680000" (2021).  
*Legacy Scout Tickets from Pure Oil Company*. 7044.  
<https://scholarworks.wmich.edu/pure/7044>

This Document is brought to you for free and open access via ScholarWorks at WMU. It has been accepted for inclusion in Legacy Scout Tickets from Pure Oil Company by an authorized administrator of ScholarWorks at WMU. See the National Digital Catalogue - Science Base Catalogue for more collections submitted by MGRRE.



---

**MGRRE\_PureOilScoutTickets\_Creek Land Dev Co aka Wittels  
H\_1\_21121002680000**

API 21121002680000

Permit Number 268

Lease Name Creek Land Dev Co aka Wittels H

Well Number 1

County Muskegon

Township 11N

Range 15W

Section 34

2021 DEQ or Pure co\_name Creek Land Development Company

Pure Number 181

Latitude 43.30795

Longitude -86.08478

THE PURE OIL COMPANY

## LOCATION REPORT

No.

DATE 11/27/28.STATE MICHIGAN COUNTY MUSKEGON DIST CEDAR CREEK SEC. 34 TOWN 11-N RANGE 15-W.WELL No. 1 (SERIAL No. 181) FARM HENRY WITTELS ACRESNAME OF STREAM OR WATERS QUADRANGLE NE of NE of sec. 34.OPERATOR CREEK LAND DEVELOPMENT COMPANY. MAP CEDAR CREEK TOWNSHIP.250 Feet from North Line of Farm250 " " East " " "

" " South " " "

" " West " " "

250 Feet from North Line of Section250 " " East " " "

" " South " " "

" " West " " "

## LEGEND

O LOCATION

① RIG

⊕ DRILLING

⊗ GAS WELL

● OIL WELL

⬮ SMALL OIL WELL

⬮ DRY HOLE

⬮ DRY SHOWING OIL

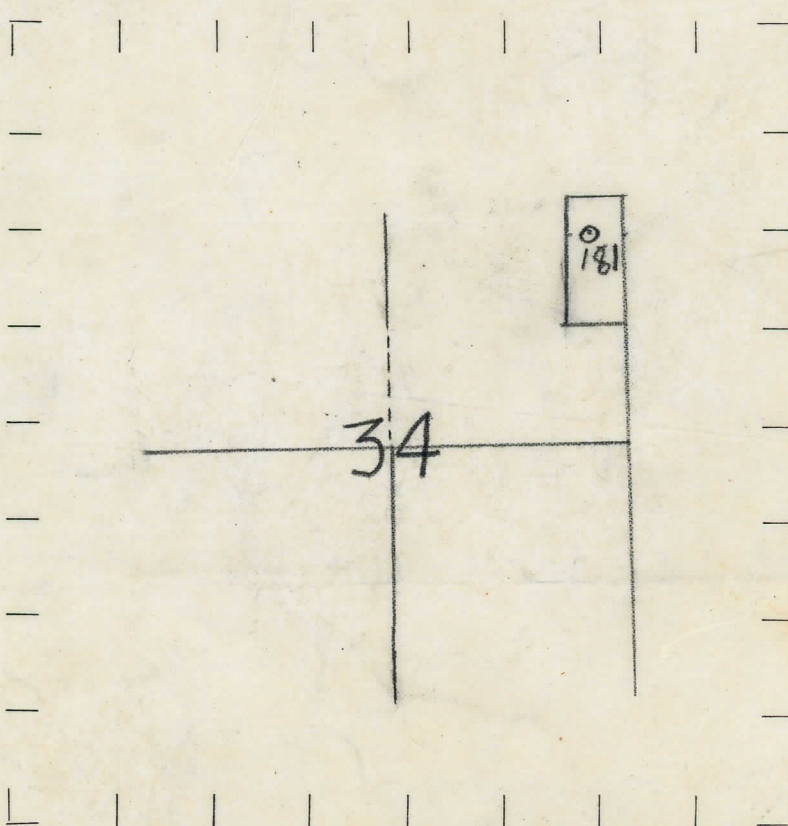
⬮ DRY SHOWING GAS

⬮ ABANDONED LOCATION

⬮ ABANDONED GAS WELL

⬮ ABANDONED OIL WELL

NOTE: Below make tracing from map (when no map is obtainable make sketch), showing farm, center of section, this location with measurements and also wells, dry holes, or other locations in the vicinity of this location. Make copy to keep for reference and send original to Columbus office.



REMARKS:

SIGNED

Superintendent or Foreman.



ГОСУДИОН ВЕРОВКЕ  
THE FORD CIE COMPANY

49

STATE Michigan COUNTY Muskegon DIST. Cedar Creek SEC. 34 TOWN 10 N RANGE 15 W

NAME OF STREAM OR WATERS \_\_\_\_\_ QUADRANGLE \_\_\_\_\_

LOCATION REPORT SENT IN (DATE) 12/15/28

WELL STARTED (DATE) December 1928 WELL COMPLETED (DATE) Sept. 7th, 1929

## OIL WELL

~~Y-X GAS WELL~~

**XD**RY HOLE

## ABANDONED WELL

**CROSS OUT THREE OF THE ABOVE**

**WELL RECORD**

DATE OF SHOT \_\_\_\_\_ NUMBER OF QUARTS \_\_\_\_\_

1st 24 HOURS PRODUCTION Dry BARRELS OR FEET

2nd " " "

---

[illegible][illegible]

5th " " " " " "

## SAND AND CASING

[illegible]

REMARKS	P.P.& Aban.
---------	-------------

NOTE:—MAKE COPY TO KEEP FOR REFERENCE AND SEND ORIGINAL TO CHICAGO OFFICE. LIST MATERIAL CHARGEABLE TO WELL ON OTHER SIDE.

SIGNED \_\_\_\_\_ SUPT. OR FOREMAN \_\_\_\_\_