



Western Michigan University  
ScholarWorks at WMU

---

Legacy Scout Tickets from Pure Oil Company

---

8-20-2021

**MGRRE\_PureOilScoutTickets\_Boyce, E. #1\_1\_21121002850000**

MGRRE

*Western Michigan University*

Follow this and additional works at: <https://scholarworks.wmich.edu/pure>



Part of the Geology Commons

---

#### WMU ScholarWorks Citation

MGRRE, "MGRRE\_PureOilScoutTickets\_Boyce, E. #1\_1\_21121002850000" (2021). *Legacy Scout Tickets from Pure Oil Company*. 7064.

<https://scholarworks.wmich.edu/pure/7064>

This Document is brought to you for free and open access via ScholarWorks at WMU. It has been accepted for inclusion in Legacy Scout Tickets from Pure Oil Company by an authorized administrator of ScholarWorks at WMU. See the National Digital Catalogue - Science Base Catalogue for more collections submitted by MGRRE.



---

**MGRRE\_PureOilScoutTickets\_Boyce, E. #1\_1\_21121002850000**

API 21121002850000

Permit Number 285

Lease Name Boyce, E. #1

Well Number 1

County Muskegon

Township 10N

Range 16W

Section 4

2021 DEQ or Pure co\_name Scott and Estes

Pure Number 201

Latitude 43.28928

Longitude -86.21776

## THE PURE OIL COMPANY

## LOCATION REPORT

DATE Dec 15th 1928No. 201STATE Michigan COUNTY Muskegon DIST. Muskegon SEC. 4 TOWN 10 N RANGE 16 WWELL No. 1 (SERIAL No. 201) FARM Edward Boyce ACRES

NAME OF STREAM OR WATERS QUADRANGLE

OPERATOR Estes & Scott MAP Muskegon Twp. Muskegon Co.

Feet from North Line of Farm

" " East " " "

200 " " South " " "200 " " West " " "

Feet from North Line of Section

" " East " " "

" " South " " "

" " West " " "

## LEGEND

O LOCATION

① RIG

⊕ DRILLING

⊗ GAS WELL

● OIL WELL

⬮ SMALL OIL WELL

⊕ DRY HOLE

⬮ DRY SHOWING OIL

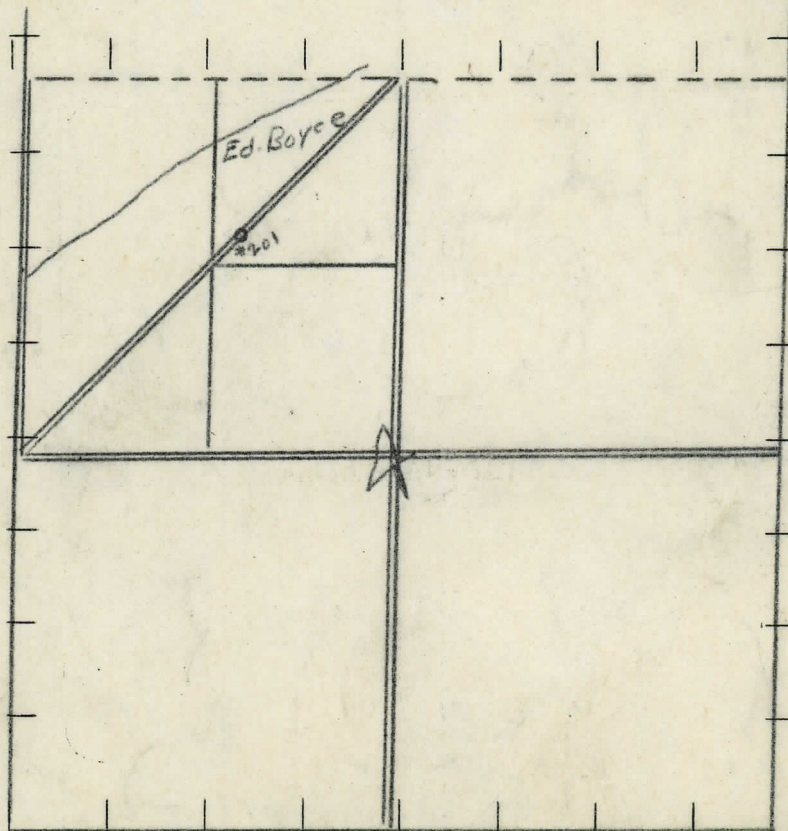
⊗ DRY SHOWING GAS

⊗ ABANDONED LOCATION

⬮ ABANDONED GAS WELL

⬮ ABANDONED OIL WELL

NOTE: Below make tracing from map, (when no map is obtainable make sketch) showing farm, center of section, this location with measurements and also wells, dry holes, or other locations in the vicinity of this location. Make copy to keep for reference and send original to Columbus office.



REMARKS:

SIGNED

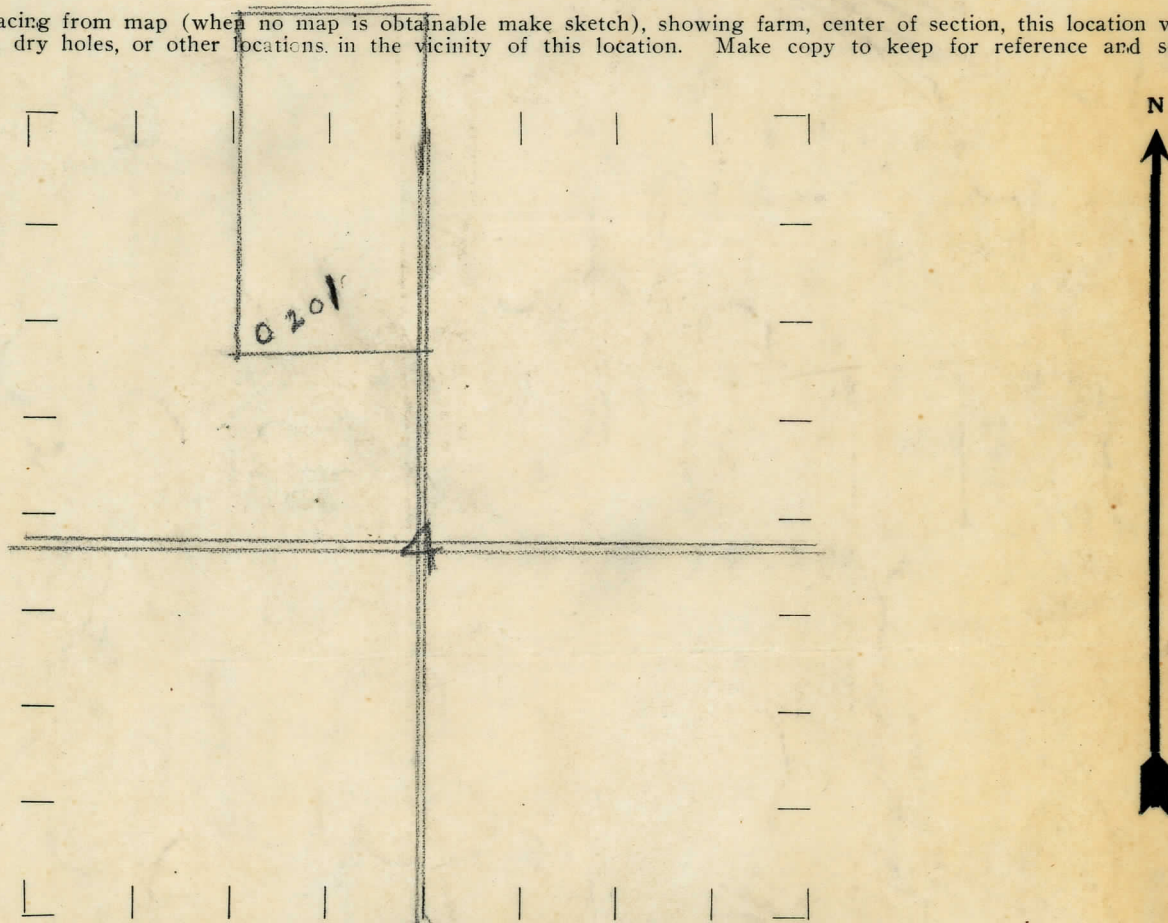
Superintendent or Foreman.

STATE MICHIGAN COUNTY MUSKEGON DIST TWP MUSKEGON SEC 4 TOWN 10-N RANGE 16-W.  
 WELL No. 1 (SERIAL No. 201) FARM EDWARD & BOYCE 73 ACRES  
 NAME OF STREAM OR WATERS QUADRANGLE SW NE NW 4-10-16-W.  
 OPERATOR ESTES & SCOTT MAP MUSKEGON COUNTY & TOWNSHIP.

Feet from North Line of Farm  
 200 East  
 200 South  
 1120 West  
 Feet from North Line of Section  
 200 East  
 1520 South  
 West

- LEGEND**
- O LOCATION
  - ① RIG
  - ⊕ DRILLING
  - ⚙ GAS WELL
  - OIL WELL
  - ⬮ SMALL OIL WELL
  - ⬮ DRY HOLE
  - ⬮ DRY SHOWING OIL
  - ⬮ DRY SHOWING GAS
  - ⬮ ABANDONED LOCATION
  - ⬮ ABANDONED GAS WELL
  - ⬮ ABANDONED OIL WELL

NOTE: Below make tracing from map (when no map is obtainable make sketch), showing farm, center of section, this location with measurements and also wells, dry holes, or other locations in the vicinity of this location. Make copy to keep for reference and send original to Columbus office.



REMARKS:

SIGNED

Superintendent or Foreman.

