



Western Michigan University
ScholarWorks at WMU

Legacy Scout Tickets from Pure Oil Company

8-20-2021

MGRRE_PureOilScoutTickets_Cihak_1_21121002440000

MGRRE

Western Michigan University

Follow this and additional works at: <https://scholarworks.wmich.edu/pure>



Part of the Geology Commons

WMU ScholarWorks Citation

MGRRE, "MGRRE_PureOilScoutTickets_Cihak_1_21121002440000" (2021). *Legacy Scout Tickets from Pure Oil Company*. 7070.

<https://scholarworks.wmich.edu/pure/7070>

This Document is brought to you for free and open access via ScholarWorks at WMU. It has been accepted for inclusion in Legacy Scout Tickets from Pure Oil Company by an authorized administrator of ScholarWorks at WMU. See the National Digital Catalogue - Science Base Catalogue for more collections submitted by MGRRE.



MGRRE_PureOilScoutTickets_Cihak_1_21121002440000

API 21121002440000

Permit Number 244

Lease Name Cihak

Well Number 1

County Muskegon

Township 10N

Range 16W

Section 5

2021 DEQ or Pure co_name Muskegon Great Lakes Oil and Gas Company

Pure Number 207

Latitude 43.28396

Longitude -86.22454

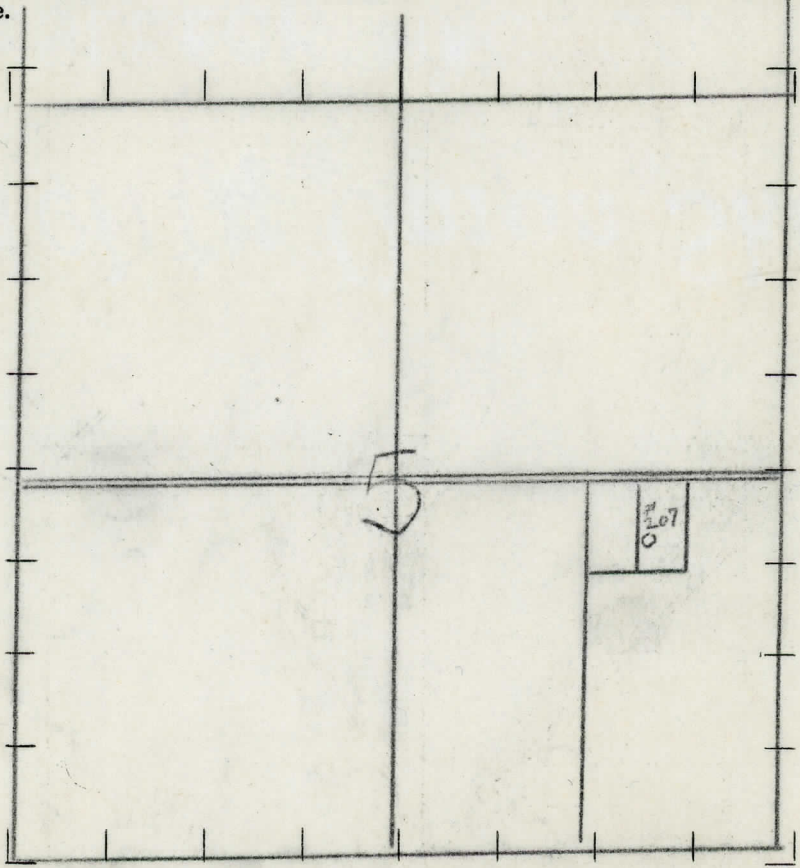
DATE Dec 13th 1928 LOCATION REPORT No. 207
 STATE Michigan COUNTY Muskegon DIST. Muskegon SEC. 5 TOWN 10N RANGE 16W
 WELL No. 1 (SERIAL No. 207) FARM G. Cihak ACRES
 NAME OF STREAM OR WATERS QUADRANGLE
 OPERATOR Great Lakes Oil & Gas Co. MAP Muskegon Sup. Muskegon Co.

Feet from North Line of Farm
 " " East " " "
 " " South " " "
 " " West " " "
 Feet from North Line of Section
900 " " East " " "
2140 " " South " " "
 " " West " " "

- LEGEND**
- LOCATION
 - ⊙ RIG
 - ⊕ DRILLING
 - ⊗ GAS WELL
 - OIL WELL
 - ⬮ SMALL OIL WELL
 - ⊙ DRY HOLE
 - ⬮ DRY SHOWING OIL
 - ⊗ DRY SHOWING GAS
 - ⊙ ABANDONED LOCATION
 - ⊗ ABANDONED GAS WELL
 - ⬮ ABANDONED OIL WELL

NOTE: Below make tracing from map, (when no map is obtainable make sketch) showing farm, center of section, this location with measurements and also wells, dry holes, or other locations in the vicinity of this location. Make copy to keep for reference and send original to Columbus office.

Elev.
638



REMARKS:

.....

.....

.....

SIGNED

Superintendent or Foreman.

WELL No.

1

(SERIAL No.

207

) FARM

F. CIHAK.

ACRES

5

NAME OF STREAM OR WATERS

QUADRANGLE NW NE SE 5-10-16-W

OPERATOR

GREAT LAKES OIL & GAS COMPANY.

MAP

MUSKEGON COUNTY & TOWNSHIP.

Feet from North Line of Farm

125

East

125

South

Feet from North Line of Section

900

East

2140

South

West

- LEGEND
- LOCATION

⊕ RIG

⊕ DRILLING

⊕ GAS WELL

● OIL WELL

⊕ SMALL OIL WELL
- ⊕ DRY HOLE

⊕ DRY SHOWING OIL

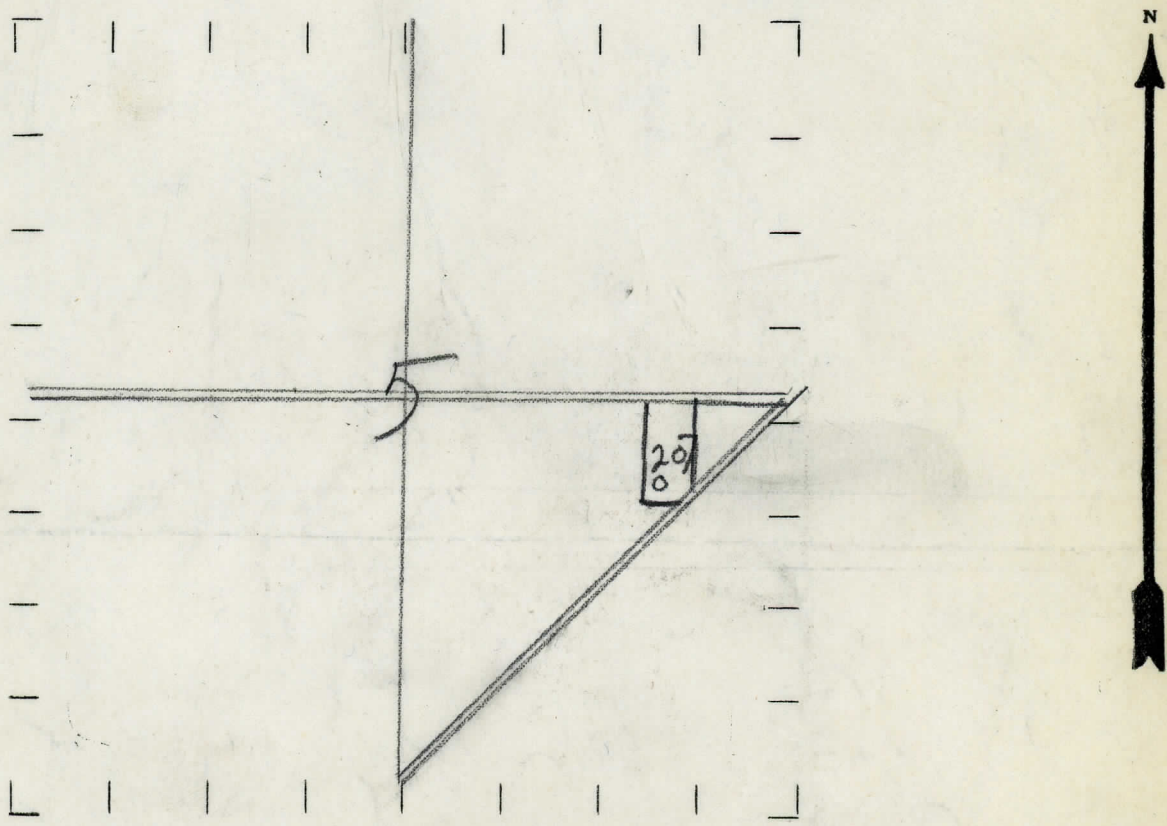
⊕ DRY SHOWING GAS

⊕ ABANDONED LOCATION

⊕ ABANDONED GAS WELL

⊕ ABANDONED OIL WELL

NOTE: Below make tracing from map, (when no map is obtainable make sketch) showing farm, center of section, this location with measurements and also wells, dry holes, or other locations in the vicinity of this location. Make copy to keep for reference and send original to Columbus office.



REMARKS:

SIGNED

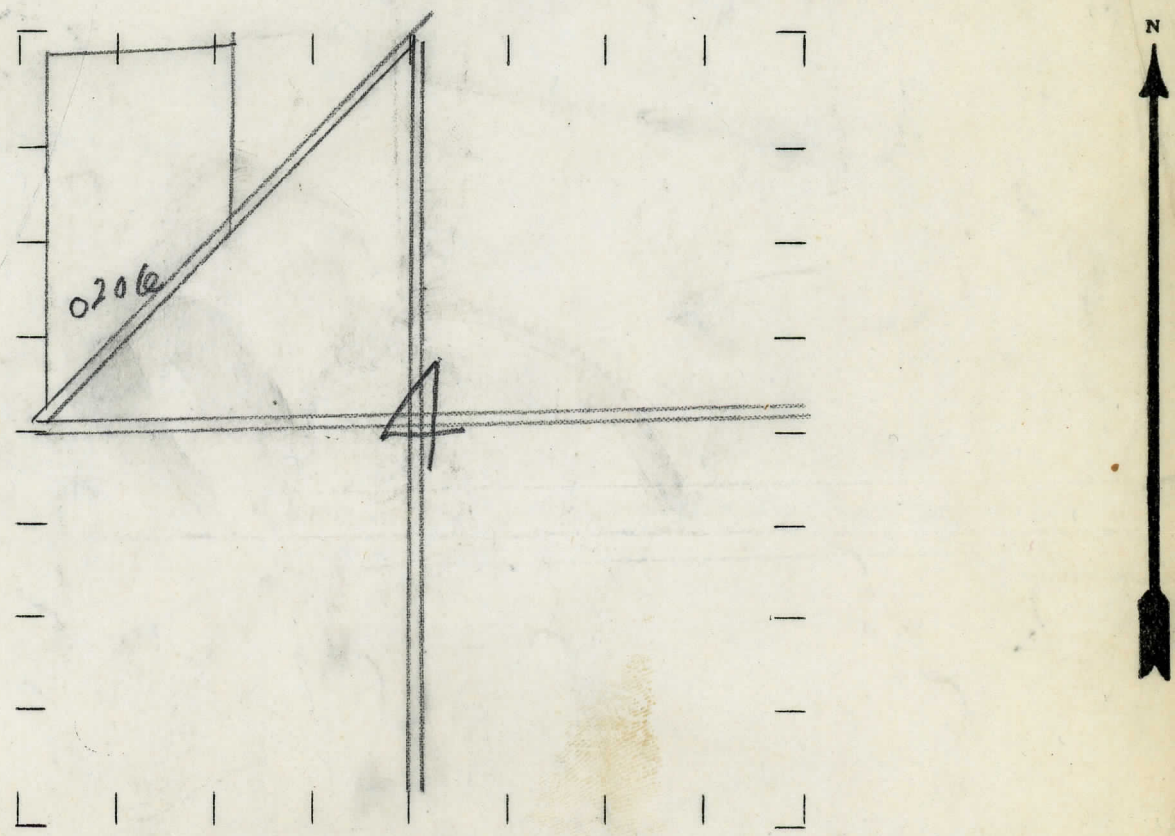
Superintendent or Foreman.

NAME OF STREAM OR WATERS
 WELL No. 2 (SERIAL No. 206) FARM C. CRAMER.
 STATE MICHIGAN COUNTY MUSKEGON DIST. MUSKEGON SEC. 4 TOWN 10-N RANGE 16-W.
 OPERATOR MUSKEGON OIL CORPORATION MAP MUSKEGON COUNTY & TOWNSHIP.

Feet from North Line of Farm
 100 " " East " " "
 100 " " South " " "
 100 " " West " " "
 Feet from North Line of Section
 3440 " " East " " "
 100 " " South " " "
 100 " " West " " "

- LEGEND**
- O LOCATION
 - ⊕ RIG
 - ⊕ DRILLING
 - ⊗ GAS WELL
 - OIL WELL
 - ⬮ SMALL OIL WELL
 - ⊕ DRY HOLE
 - ⬮ DRY SHOWING OIL
 - ⊗ DRY SHOWING GAS
 - ⊗ ABANDONED LOCATION
 - ⬮ ABANDONED GASWELL
 - ⬮ ABANDONED OIL WELL

NOTE: Below make tracing from map, (when no map is obtainable make sketch) showing farm, center of section, this location with measurements and also wells, dry holes, or other locations in the vicinity of this location. Make copy to keep for reference and send original to Columbus office.



REMARKS:

SIGNED

Superintendent or Foreman.