



Western Michigan University
ScholarWorks at WMU

Legacy Scout Tickets from Pure Oil Company

8-20-2021

MGRRE_PureOilScoutTickets_Continental Motors Corporation_6_unk

MGRRE
Western Michigan University

Follow this and additional works at: <https://scholarworks.wmich.edu/pure>



Part of the Geology Commons

WMU ScholarWorks Citation

MGRRE, "MGRRE_PureOilScoutTickets_Continental Motors Corporation_6_unk" (2021). *Legacy Scout Tickets from Pure Oil Company*. 7083.
<https://scholarworks.wmich.edu/pure/7083>

This Document is brought to you for free and open access via ScholarWorks at WMU. It has been accepted for inclusion in Legacy Scout Tickets from Pure Oil Company by an authorized administrator of ScholarWorks at WMU. See the National Digital Catalogue - Science Base Catalogue for more collections submitted by MGRRE.



MGRRE_PureOilScoutTickets_Continental Motors Corporation_6_unk

API unk

Permit Number unk

Lease Name Continental Motors Corporation

Well Number 6

County Muskegon

Township 10N

Range 16W

Section 15

2021 DEQ or Pure co_name Continental Motors Corporation

Pure Number 220

Latitude 43.2560395

Longitude -86.193873

WELL REPORT - OUTSIDE OPERATIONS

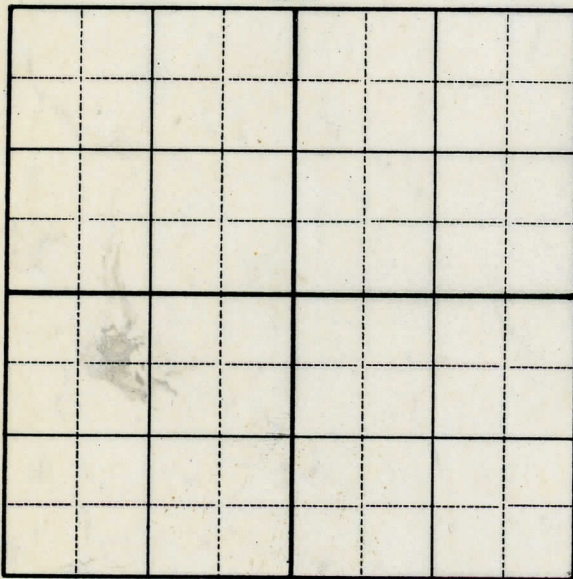
SERIAL NO. 220

STATE Michigan ~~RSB~~ CO. MuskegonOPERATOR Continental Motors Corp.FARM Fee WELL NO. 6TWP. Muskegon S. 15 T. 10N R. 16W
~~KORVEX~~LOC. NW NW NEWILDCAT ☐ FIELD ☐ FIELD NAME _____

MAP NO. _____ CO-ORD. _____ ELEV. _____

STATUS Plugged and abandoned - 11-27-53Total Depth - 1705'

NORTH

DATE 1-7-54 SCOUT JEC

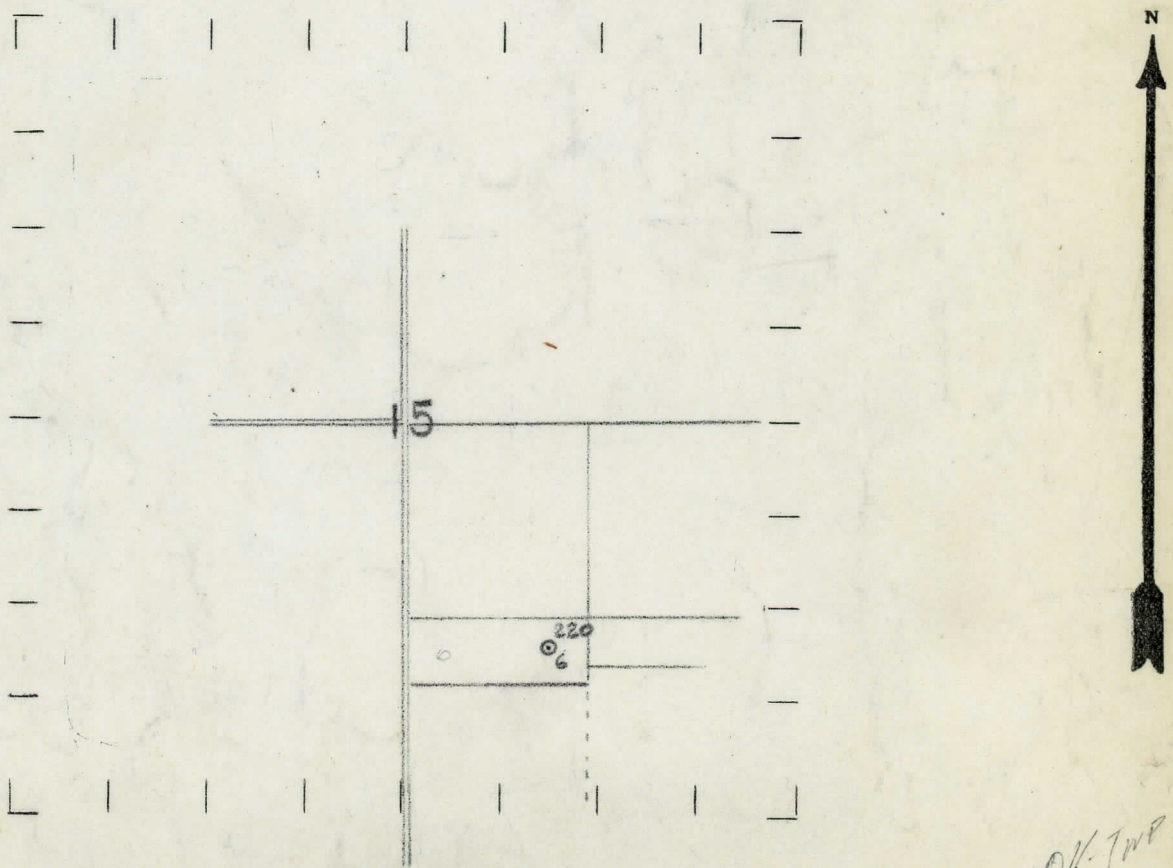
220

DATE DEC. 28th 1928 LOCATION REPORT No. _____
STATE MICHIGAN COUNTY MUSKEGON DIST. MUSKEGON SEC. 15 TOWN 10 N. RANGE 16 W.
WELL No. 6 (SERIAL No. 220) FARM Continental Motors Corp'n ACRES _____
NAME OF STREAM OR WATERS _____ QUADRANGLE _____
OPERATOR Continental Motors Corp'n MAP Muskegon Twp (4"=1 Mi)

_____ Feet from North Line of Farm
_____ " " East " " "
_____ " " South " " "
_____ " " West " " "
_____ Feet from North Line of Section
1620 " " East " " "
1070 " " South " " "
_____ " " West " " "

- LEGEND**
- | | |
|------------------|----------------------|
| ○ LOCATION | ⊕ DRY HOLE |
| ① RIG | ⊕ DRY SHOWING OIL |
| ⊕ DRILLING | ⊕ DRY SHOWING GAS |
| ⊕ GAS WELL | ⊕ ABANDONED LOCATION |
| ● OIL WELL | ⊕ ABANDONED GAS WELL |
| ⊕ SMALL OIL WELL | ⊕ ABANDONED OIL WELL |

NOTE: Below make tracing from map, (when no map is obtainable make sketch) showing farm, center of section, this location with measurements and also wells, dry holes, or other locations in the vicinity of this location. Make copy to keep for reference and send original to Columbus office.



REMARKS: Digging up

SIGNED _____
Superintendent or Foreman.

21VLE WCHSBN CONNLA WCHSBN BBEC LMB WCHSBN SEC 12 LOMI WCHSBN BVNCE
DATE 2/28/28. LOCATION REPORT No.

STATE MICHIGAN COUNTY MUSKEGON DIST. MUSKEGON SEC. 15 TOWN 10-N RANGE 16-W.
WELL No. 6 (SERIAL No. 220) FARM CONTINENTAL MOTORS CORPORATION. ACRES
NAME OF STREAM OR WATERS QUADRANGLE SW SE
OPERATOR CONTINENTAL MOTORS CORPORATION MAP MUSKEGON COUNTY & TOWNSHIP.

Feet from North Line of Farm

" " East " " "
" " South " " "
" " West " " "

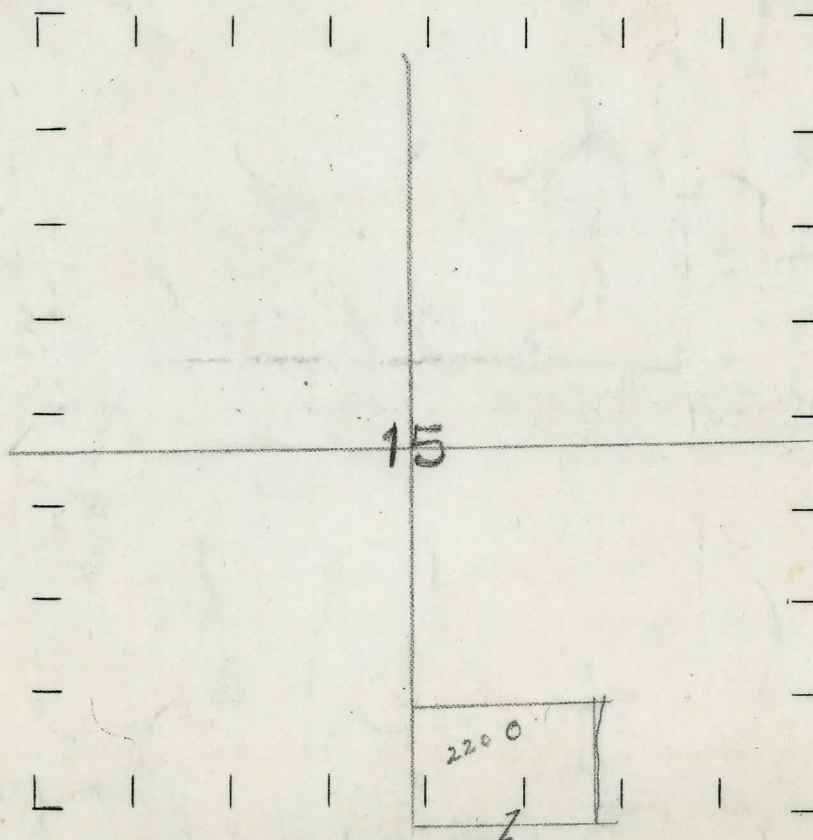
Feet from North Line of Section

1620 " " East " " "
1070 " " South " " "
" " West " " "

LEGEND

O LOCATION
① RIG
⊕ DRILLING
⊗ GAS WELL
● OIL WELL
⬮ SMALL OIL WELL
⊗ DRY HOLE
⬮ DRY SHOWING OIL
⊗ DRY SHOWING GAS
⊗ ABANDONED LOCATION
⊗ ABANDONED GAS WELL
⬮ ABANDONED OIL WELL

NOTE: Below make tracing from map, (when no map is obtainable make sketch) showing farm, center of section, this location with measurements and also wells, dry holes, or other locations in the vicinity of this location. Make copy to keep for reference and send original to Columbus office.



N

REMARKS:

500' NW of Our 178 at 45 degree angle.

SIGNED

Superintendent or Foreman.

Call Map
OK Top Map
Sec. 15
Map

SUPT. OR FOREMAN