



Western Michigan University  
ScholarWorks at WMU

---

Legacy Scout Tickets from Pure Oil Company

---

8-20-2021

**MGRRE\_PureOilScoutTickets\_Borns, A.\_1\_21121003460000**

MGRRE

*Western Michigan University*

Follow this and additional works at: <https://scholarworks.wmich.edu/pure>



Part of the Geology Commons

---

#### WMU ScholarWorks Citation

MGRRE, "MGRRE\_PureOilScoutTickets\_Borns, A.\_1\_21121003460000" (2021). *Legacy Scout Tickets from Pure Oil Company*. 7090.

<https://scholarworks.wmich.edu/pure/7090>

This Document is brought to you for free and open access via ScholarWorks at WMU. It has been accepted for inclusion in Legacy Scout Tickets from Pure Oil Company by an authorized administrator of ScholarWorks at WMU. See the National Digital Catalogue - Science Base Catalogue for more collections submitted by MGRRE.



---

**MGRRE\_PureOilScoutTickets\_Borns, A.\_1\_21121003460000**

API 21121003460000

Permit Number 346

Lease Name Borns, A.

Well Number 1

County Muskegon

Township 09N

Range 16W

Section 12

2021 DEQ or Pure co\_name Cloverville Oil Company

Pure Number 227

Latitude 43.18932

Longitude -86.14627





DATE 1-2-29

LOCATION REPORT

No.

STATE Michigan COUNTY Muskegon DIST. Fruitport SEC. 12 TOWN 9N RANGE 16W  
PREC.

WELL No. 1 (SERIAL No. 227) FARM Arthur Born ACRES

NAME OF STREAM OR WATERS QUADRANGLE

OPERATOR Cloverville Drilling Co. MAP Fruitport Twp (1"=1 Mi.)

250 Feet from North Line of Farm

250 " " East " " "

" " South " " "

" " West " " "

250 Feet from North Line of Section

250 " " East " " "

" " South " " "

" " West " " "

LEGEND

○ LOCATION

⊕ RIG

⊕ DRILLING

⊕ GAS WELL

● OIL WELL

⊕ SMALL OIL WELL

⊕ DRY HOLE

⊕ DRY SHOWING OIL

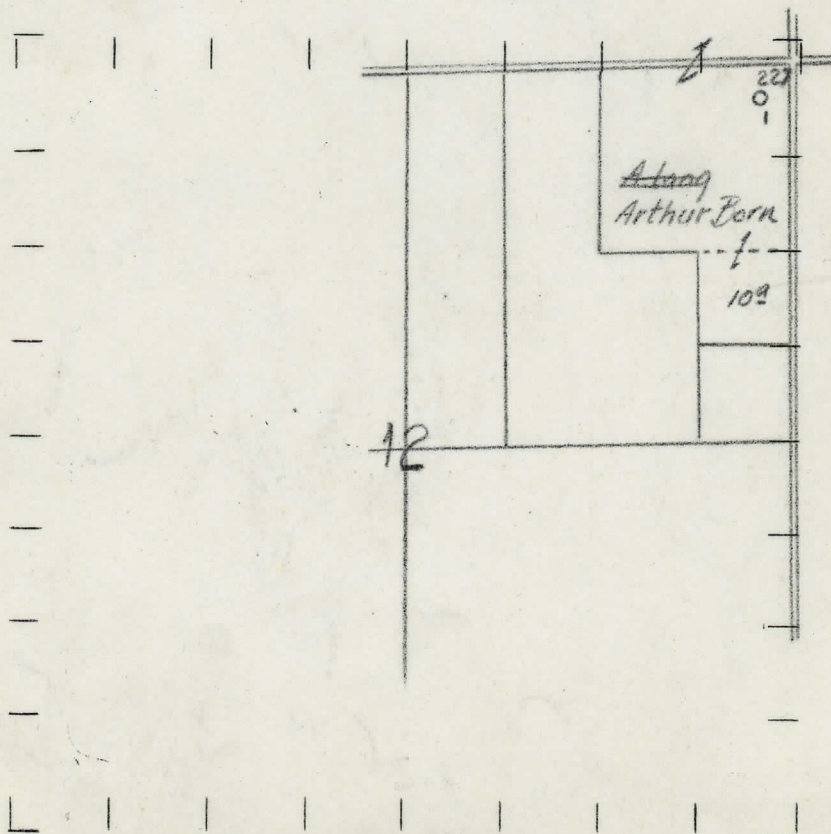
⊕ DRY SHOWING GAS

⊕ ABANDONED LOCATION

⊕ ABANDONED GAS WELL

⊕ ABANDONED OIL WELL

NOTE: Below make tracing from map, (when no map is obtainable make sketch) showing farm, center of section, this location with measurements and also wells, dry holes, or other locations in the vicinity of this location. Make copy to keep for reference and send original to Columbus office.



REMARKS:

SIGNED

Superintendent or Foreman.

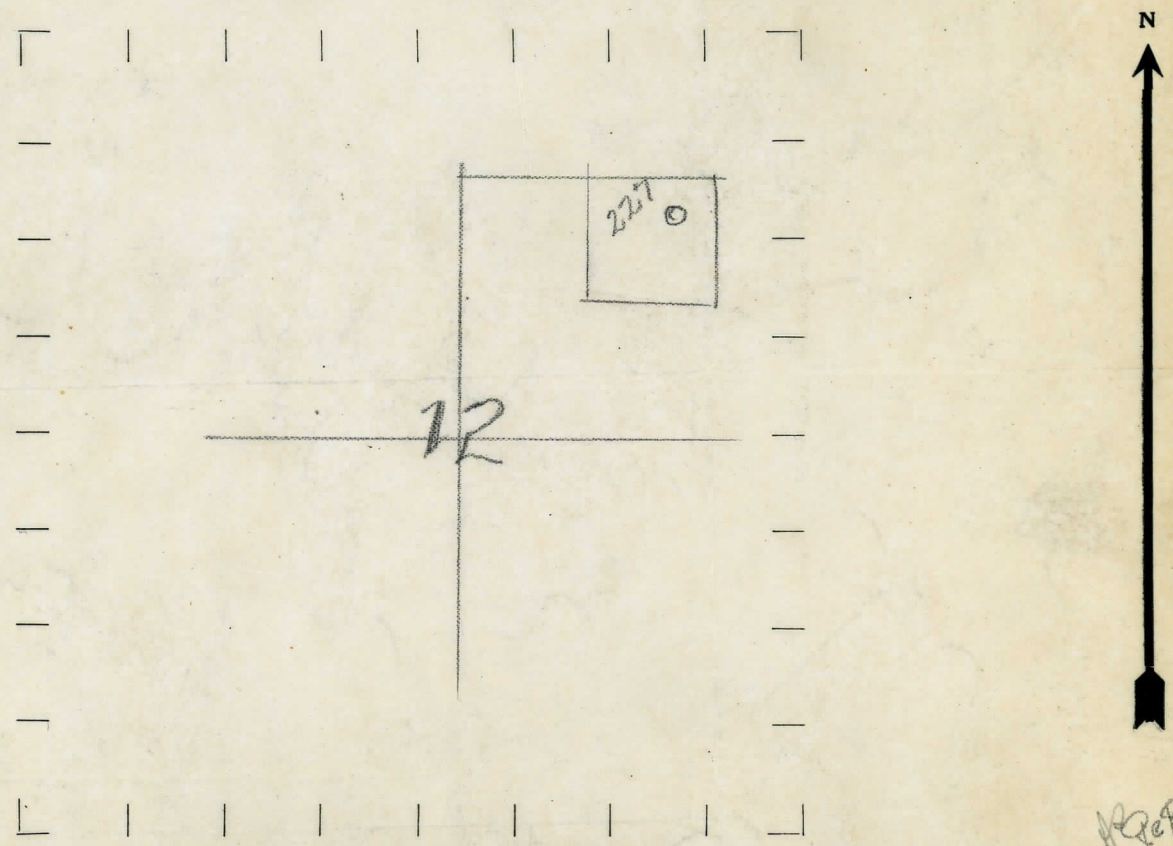


STATE MICHIGAN COUNTY MUSKEGON DIST TWP. FRUITPORT SEC. 12 TOWN 9-N RANGE 16-W. WELL No. 1 (SERIAL No 227) FARM ARHTUR BORN. ACRES NAME OF STREAM OR WATERS QUADRANGLE NE NE 12-9-17.16 OPERATOR CLOVERVILLE DRILLING COMPANY. MAP MUSKEGON COUNTY & FRUITPORT TWP.

250 Feet from North Line of Farm 250 " " East " " " " " " South " " " " " " West " " " " " 250 Feet from North Line of Section 250 " " East " " " " " " South " " " " " " West " " " " " "

- LEGEND
- LOCATION
  - ① RIG
  - ⊕ DRILLING
  - ⊗ GAS WELL
  - OIL WELL
  - ◆ SMALL OIL WELL
  - ✦ DRY HOLE
  - ✦ DRY SHOWING OIL
  - ✦ DRY SHOWING GAS
  - ✦ ABANDONED LOCATION
  - ✦ ABANDONED GAS WELL
  - ✦ ABANDONED OIL WELL

NOTE: Below make tracing from map (when no map is obtainable make sketch), showing farm, center of section, this location with measurements and also wells, dry holes, or other locations in the vicinity of this location. Make copy to keep for reference and send original to Columbus office.



REMARKS:

SIGNED Superintendent or Foreman.