



Western Michigan University  
ScholarWorks at WMU

---

Legacy Scout Tickets from Pure Oil Company

---

8-20-2021

**MGRRE\_PureOilScoutTickets\_Andree\_1\_21121003210000**

MGRRE

*Western Michigan University*

Follow this and additional works at: <https://scholarworks.wmich.edu/pure>



Part of the Geology Commons

---

#### WMU ScholarWorks Citation

MGRRE, "MGRRE\_PureOilScoutTickets\_Andree\_1\_21121003210000" (2021). *Legacy Scout Tickets from Pure Oil Company*. 7097.

<https://scholarworks.wmich.edu/pure/7097>

This Document is brought to you for free and open access via ScholarWorks at WMU. It has been accepted for inclusion in Legacy Scout Tickets from Pure Oil Company by an authorized administrator of ScholarWorks at WMU. See the National Digital Catalogue - Science Base Catalogue for more collections submitted by MGRRE.



---

**MGRRE\_PureOilScoutTickets\_Andree\_1\_21121003210000**

API 21121003210000

Permit Number 321

Lease Name Andree

Well Number 1

County Muskegon

Township 10N

Range 17W

Section 12

2021 DEQ or Pure co\_name Nelson and Witt, Incorporated

Pure Number 234

Latitude 43.26996

Longitude -86.26991

DATE August 31, 1940

## LOCATION REPORT

No. 234

STATE Michigan COUNTY Muskegon DIST. Laketon SEC. 12 TOWN 10 N RANGE 17 W  
 WELL No. 1 (SERIAL No. 234) FARM R. Andree ACRES  
 NAME OF STREAM OR WATERS QUADRANGLE N.W.S.E. 12.10.17  
 OPERATOR Witt and Nelson Map Laketon Township, Muskegon County

Feet from North Line of Farm

" " East " " "

" " South " " "

" " West " " "

Feet from North Line of Section

" " East " " "

" " South " " "

" " West " " "

## LEGEND

○ LOCATION

① RIG

⊕ DRILLING

☀ GAS WELL

● OIL WELL

⦿ SMALL OIL WELL

⊙ DRY HOLE

⦿ DRY SHOWING OIL

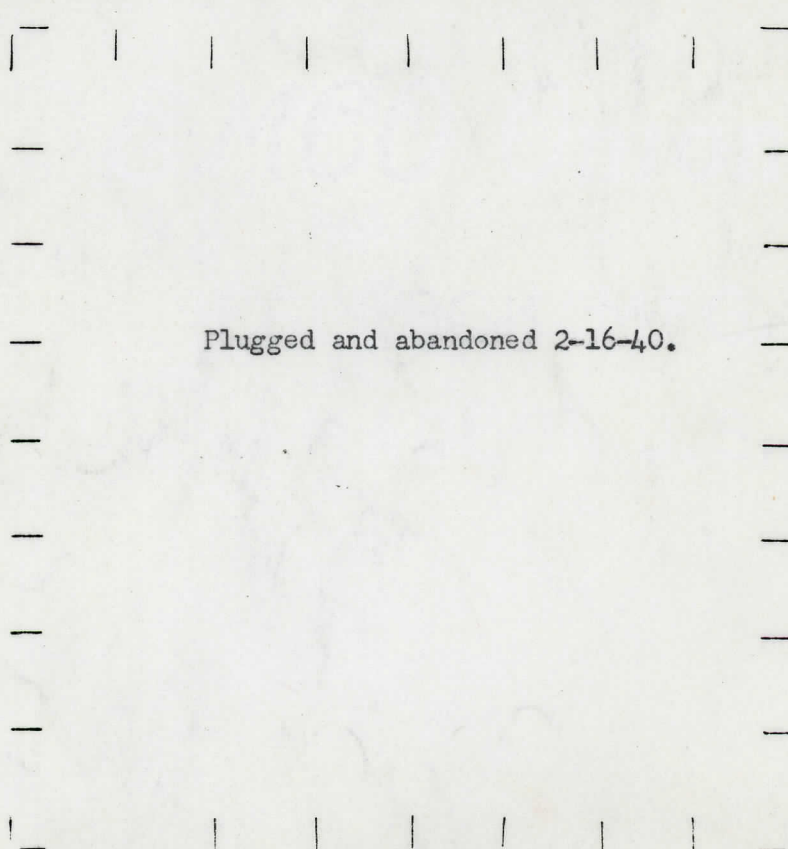
⊙ DRY SHOWING GAS

⦿ ABANDONED LOCATION

☀ ABANDONED GAS WELL

⦿ ABANDONED OIL WELL

NOTE: Below make tracing from map, (when no map is obtainable make sketch) showing farm, center of section, this location with measurements and also wells, dry holes, or other locations in the vicinity of this location.



REMARKS:

SIGNED

Superintendent or Foreman.

LOCATION REPORT

No. 234

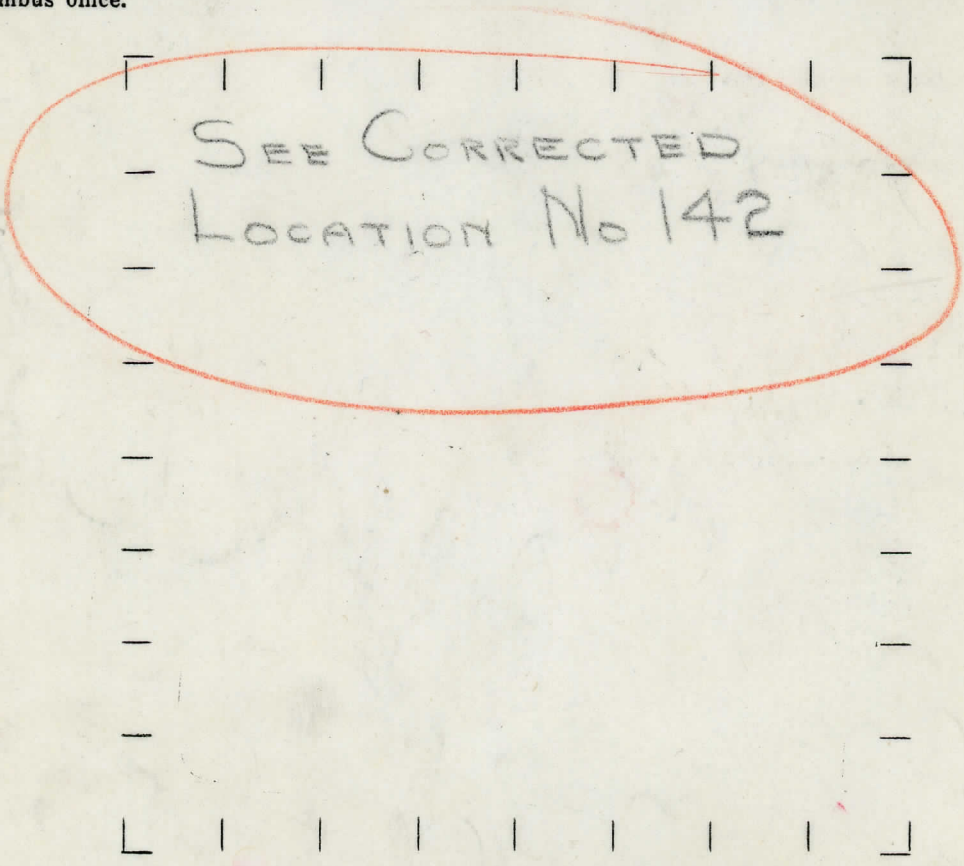
THE PURE OIL COMPANY  
LOCATION REPORT  
DATE L/ 2-29  
STATE MICHIGAN COUNTY MUSKEGON DIST. LAKE TOWNSHIP SEC. 12 TOWN 10-N RANGE 17-W  
WELL No. 1 (SERIAL No. 234) FARM R ANDREE ACRES  
NAME OF STREAM OR WATERS QUADRANGLE  
OPERATOR WITT + NELSON MAP

Feet from North Line of Farm  
" " East " " "  
" " South " " "  
" " West " " "  
2830 Feet from North Line of Section  
2430 " " East " " "  
" " South " " "  
" " West " " "

2-16-45

- LEGEND
- |                  |                      |
|------------------|----------------------|
| ○ LOCATION       | ⊕ DRY HOLE           |
| ① RIG            | ⬮ DRY SHOWING OIL    |
| ⊕ DRILLING       | ⊕ DRY SHOWING GAS    |
| ⊕ GAS WELL       | ⊕ ABANDONED LOCATION |
| ● OIL WELL       | ⊕ ABANDONED GAS WELL |
| ⬮ SMALL OIL WELL | ⬮ ABANDONED OIL WELL |

NOTE: Below make tracing from map, (when no map is obtainable make sketch) showing farm, center of section, this location with measurements and also wells, dry holes, or other locations in the vicinity of this location. Make copy to keep for reference and send original to Columbus office.



REMARKS:  
\_\_\_\_\_  
\_\_\_\_\_  
\_\_\_\_\_

SIGNED

Superintendent or Foreman.

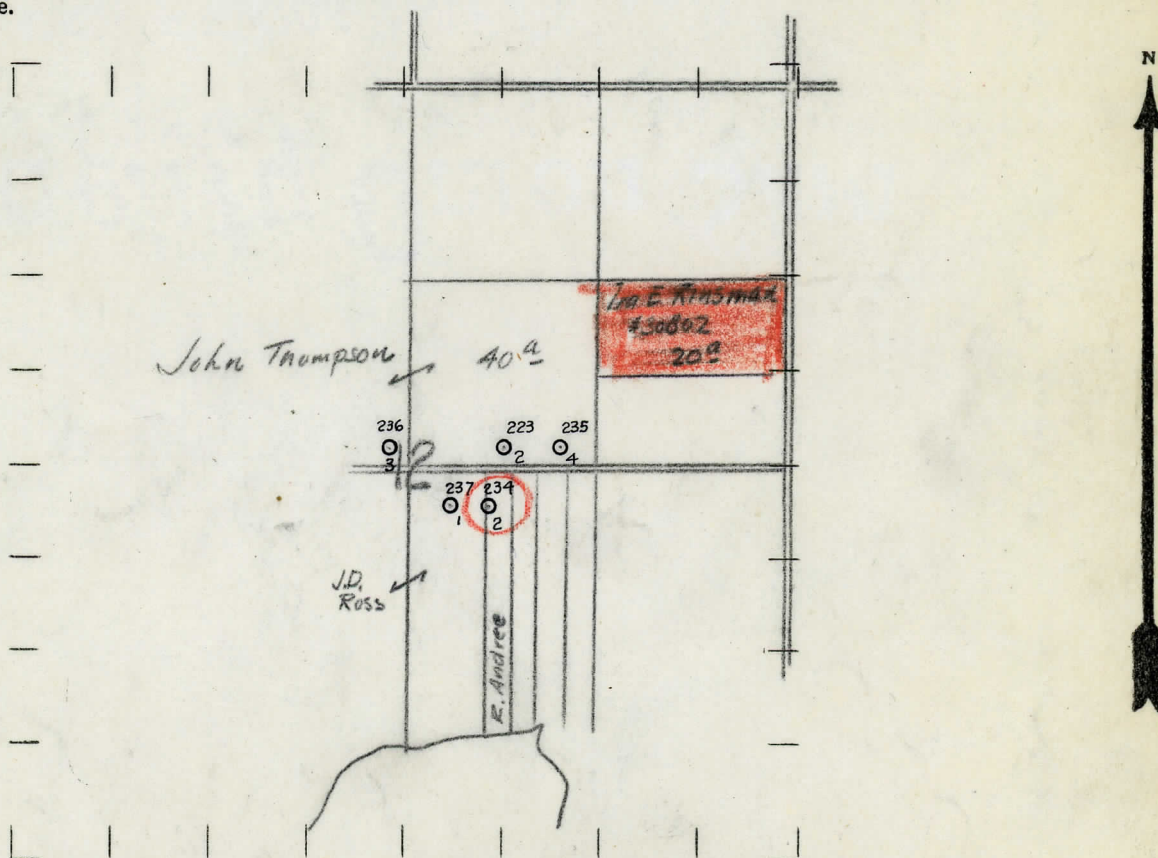
NAME OF STREAM OR WATERS  
 WELL No. 2 (SERIAL No. 234) FARM Andree  
 STATE Mich COUNTY Muskegon TWP Laketon SEC 12 TOWN 10 N RANGE 17 W  
 NAME OF STREAM OR WATERS QUADRANGLE  
 OPERATOR Witt & Nelson MAP

250 Feet from North Line of Farm  
 " " East " " "  
 165 " " South " " "  
 " " West " " "  
 Feet from North Line of Section  
 " " East " " "  
 2390 " " South " " "  
 " " West " " "

**LEGEND**

○ LOCATION	⊕ DRY HOLE
① RIG	⊕ DRY SHOWING OIL
⊕ DRILLING	⊕ DRY SHOWING GAS
⊕ GAS WELL	⊕ ABANDONED LOCATION
● OIL WELL	⊕ ABANDONED GAS WELL
⊕ SMALL OIL WELL	⊕ ABANDONED OIL WELL

NOTE: Below make tracing from map, (when no map is obtainable make sketch) showing farm, center of section, this location with measurements and also wells, dry holes, or other locations in the vicinity of this location. Make copy to keep for reference and send original to Columbus office.



REMARKS: This plat also serves as location plat for Well Nos 235 - 236 - 237 and Corrected Location for #223.

SIGNED

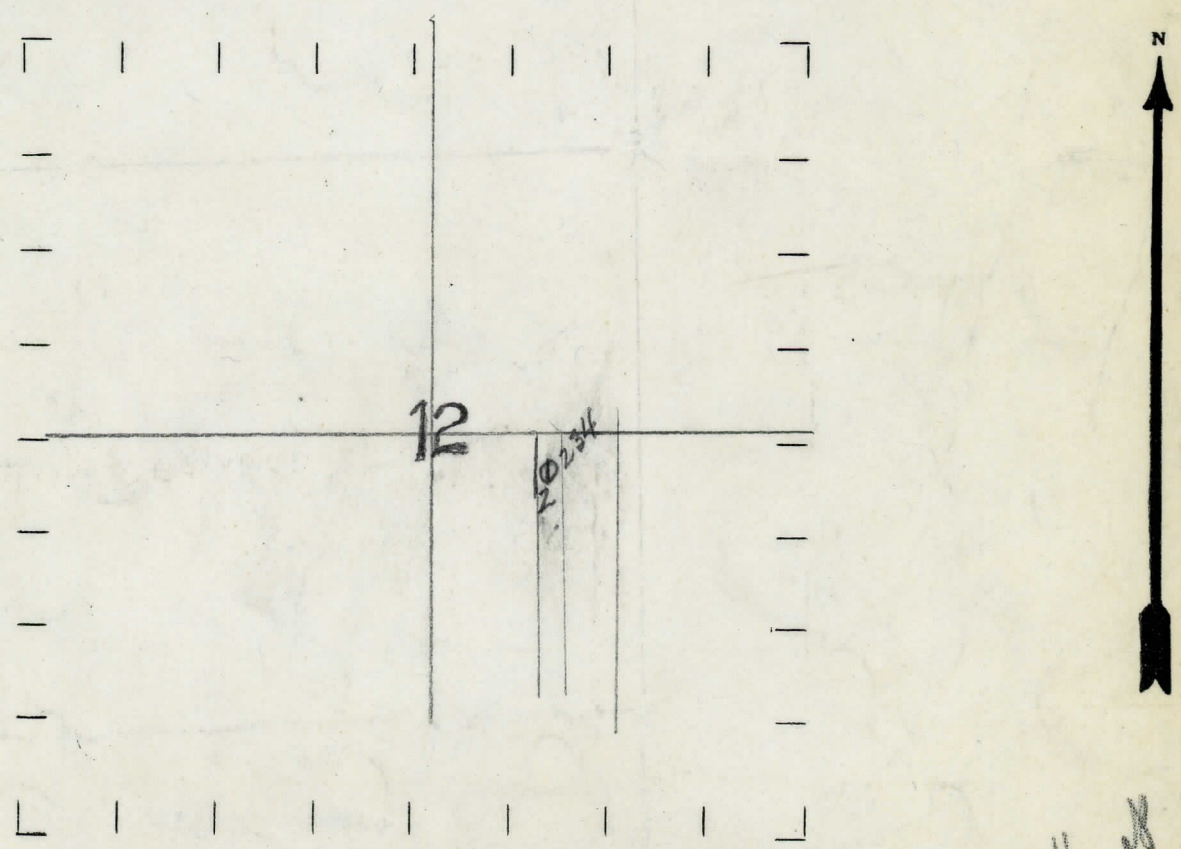
Superintendent or Foreman.

NAME OF STREAM OR WATERS  
 MEFF No. (SERIAL No.) EYBN  
 STATE MICHIGAN COUNTY Muskegon DIST. LAKETON SEC. 12 TOWN 10. N RANGE 17. W  
 WELL No. 2 (SERIAL No. 234) FARM R. ANDREE (5) ACRES  
 NAME OF STREAM OR WATERS QUADRANGLE N.W.S.E. 2.10.17  
 OPERATOR WITT & NELSON MAP LAKETON

250 Feet from North Line of Farm  
 " " East " " "  
 " " South " " "  
 165 " " West " " "  
 Feet from North Line of Section  
 " " East " " "  
 2390 " " South " " "  
 3135 " " West " " "

- LEGEND**
- LOCATION
  - ① RIG
  - ⊕ DRILLING
  - ⊙ GAS WELL
  - OIL WELL
  - ⬮ SMALL OIL WELL
  - ⊙ DRY HOLE
  - ⬮ DRY SHOWING OIL
  - ⊙ DRY SHOWING GAS
  - ⊙ ABANDONED LOCATION
  - ⬮ ABANDONED GAS WELL
  - ⬮ ABANDONED OIL WELL

NOTE: Below make tracing from map, (when no map is obtainable make sketch) showing farm, center of section, this location with measurements and also wells, dry holes, or other locations in the vicinity of this location. Make copy to keep for reference and send original to Columbus office.



REMARKS:

SIGNED  
 Superintendent or Foreman.

## No. 234

DATE April 20, 1929.

STATE Michigan COUNTY Muskegon DIST. Laketon TWP. Laketon SEC. 12 TOWN 10 N RANGE 17 W

DIST. 4  
TWP. aketon  
PREC. 4

SEC. 12

TOWN 10 N RANGE 17 W

WELL No. 1 (SERIAL No. 234) FARM R. Andree ACRES

NAME OF STREAM OR WATERS \_\_\_\_\_ QUADRANGLE \_\_\_\_\_

OPERATOR Witt-Nelson MAP \_\_\_\_\_

LOCATION REPORT SENT IN (DATE) 1/12/29

WELL STARTED (DATE) January 1929. WELL COMPLETED (DATE) April 20, 1929.

## OIL WELL

## GAS WELL

## DRY HOLE

## ABANDONED WELL

**CROSS OUT THREE OF THE ABOVE  
WELL RECORD**

DATE OF SHOT \_\_\_\_\_ NUMBER OF QUARTS \_\_\_\_\_

1st 24 HOURS PRODUCTION \_\_\_\_\_ BARRELS OR FEET \_\_\_\_\_

2nd " " " " " " " " " " " "

[illegible]

4th " " " " " "

5th " " " " " "

## SAND AND CASING

[illegible]

REMARKS	Expected to drill on through Dundee.
---------	--------------------------------------

NOTE:—MAKE COPY TO KEEP FOR REFERENCE AND SEND ORIGINAL TO CHICAGO OFFICE. LIST MATERIAL CHARGEABLE TO WELL ON OTHER SIDE.

SIGNED \_\_\_\_\_

**SUPT. OR FOREMAN**

SIGNED \_\_\_\_\_ SUPT. OR FOREMAN