



Western Michigan University
ScholarWorks at WMU

Legacy Scout Tickets from Pure Oil Company

8-20-2021

MGRRE_PureOilScoutTickets_Beegle_1_21121003590000

MGRRE

Western Michigan University

Follow this and additional works at: <https://scholarworks.wmich.edu/pure>



Part of the Geology Commons

WMU ScholarWorks Citation

MGRRE, "MGRRE_PureOilScoutTickets_Beegle_1_21121003590000" (2021). *Legacy Scout Tickets from Pure Oil Company*. 7107.

<https://scholarworks.wmich.edu/pure/7107>

This Document is brought to you for free and open access via ScholarWorks at WMU. It has been accepted for inclusion in Legacy Scout Tickets from Pure Oil Company by an authorized administrator of ScholarWorks at WMU. See the National Digital Catalogue - Science Base Catalogue for more collections submitted by MGRRE.



MGRRE_PureOilScoutTickets_Beegle_1_21121003590000

API 21121003590000

Permit Number 359

Lease Name Beegle

Well Number 1

County Muskegon

Township 10N

Range 17W

Section 12

2021 DEQ or Pure co_name Concord Oil and Gas Company

Pure Number 244

Latitude 43.27481

Longitude -86.27009

Corrected Location Report

THE PURE OIL COMPANY

LOCATION REPORT

DATE 4-10-29

No. 244

STATE Michigan COUNTY Muskegon DIST. Laketon SEC. 12 TOWN 10N RANGE 17W
TWP. E. Beegle PREC.

WELL No. 1 (SERIAL No. 244) FARM _____ ACRES _____

NAME OF STREAM OR WATERS _____ QUADRANGLE NW 1/4 NE 1/4

OPERATOR Concord Oil Co MAP Laketon - 4" = 1 mi

Feet from North Line of Farm

85

" " East " " "

100

" " South " " "

1280

" " West " " "

1220

Feet from North Line of Section

2150

" " East " " "

" " South " " "

" " West " " "

LEGEND

○ LOCATION

① RIG

⊕ DRILLING

⊗ GAS WELL

● OIL WELL

⬮ SMALL OIL WELL

⊗ DRY HOLE

⬮ DRY SHOWING OIL

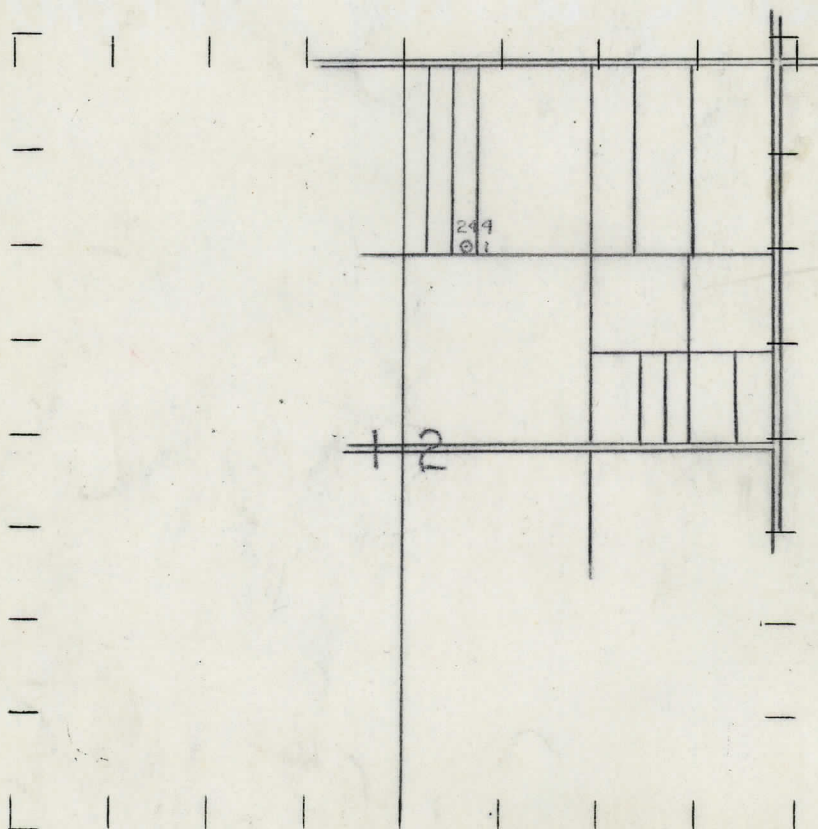
⊗ DRY SHOWING GAS

⊗ ABANDONED LOCATION

⬮ ABANDONED GAS WELL

⬮ ABANDONED OIL WELL

NOTE: Below make tracing from map, (when no map is obtainable make sketch) showing farm, center of section, this location with measurements and also wells, dry holes, or other locations in the vicinity of this location. Make copy to keep for reference and send original to Columbus office.



REMARKS:

SIGNED

Superintendent or Foreman.

James Thaxton

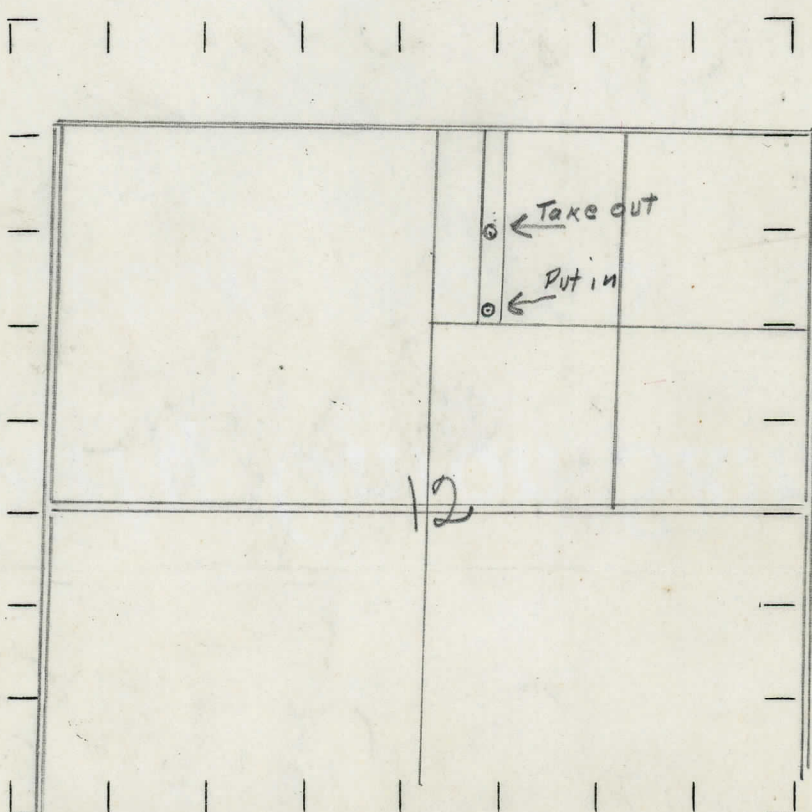
DATE 4/7/29 LOCATION REPORT No. 544
 STATE Mich COUNTY Muskegon DIST. Laketon SEC. 12 TOWN 10N RANGE 17W
 WELL No. 1 (SERIAL No. 244) FARM E. Beegle ACRES
 NAME OF STREAM OR WATERS QUADRANGLE NW NE
 OPERATOR Concord Oil Co MAP Muskegon Co. Laketon Twp

Feet from North Line of Farm
85 " " East " " "
100 " " South " " "
 " " West " " "
1220 Feet from North Line of Section
2245 " " East " " "
 " " South " " "
 " " West " " "

LEGEND

○ LOCATION	⊙ DRY HOLE
① RIG	⊕ DRY SHOWING OIL
⊕ DRILLING	⊙ DRY SHOWING GAS
⊙ GAS WELL	⊙ ABANDONED LOCATION
● OIL WELL	⊙ ABANDONED GAS WELL
⊙ SMALL OIL WELL	⊙ ABANDONED OIL WELL

NOTE: Below make tracing from map, (when no map is obtainable make sketch) showing farm, center of section, this location with measurements and also wells, dry holes, or other locations in the vicinity of this location. Make copy to keep for reference and send original to Columbus office.



REMARKS:

Corrected Location.

SIGNED

G. H. Zell

Superintendent or Foreman.

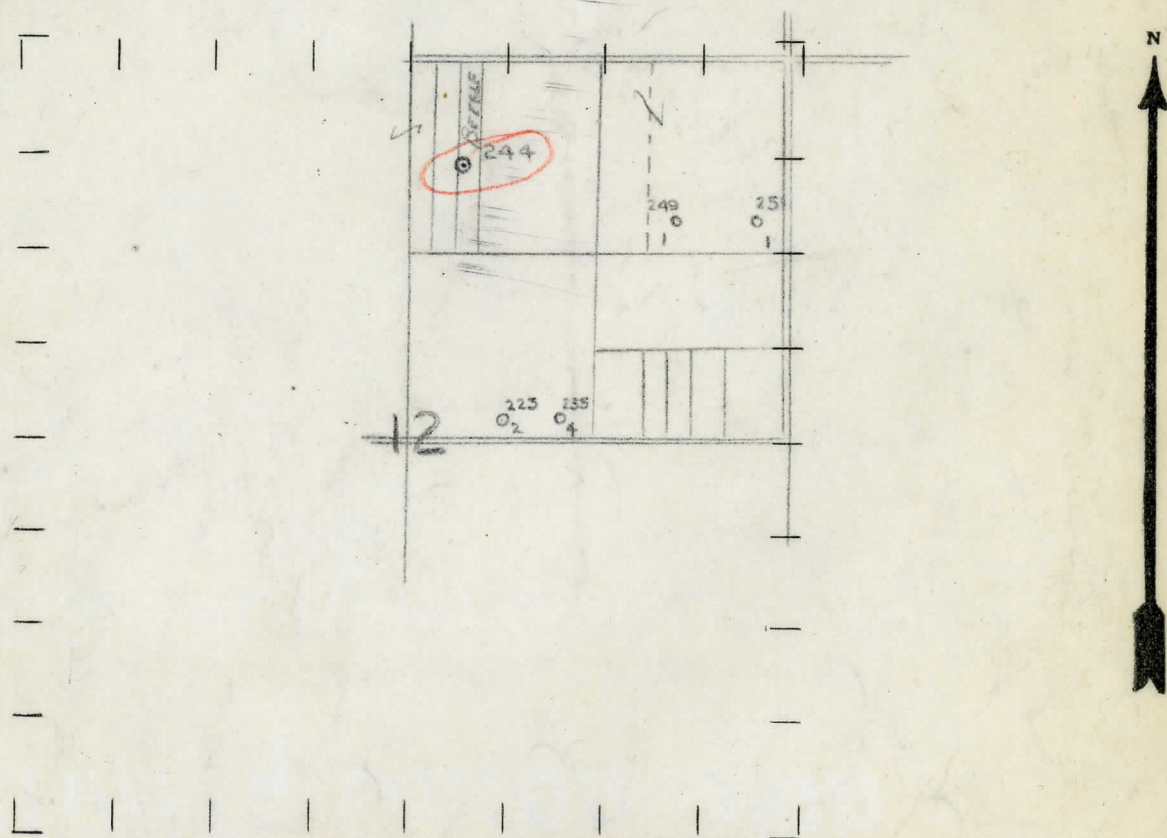
DATE 4/1/53 LOCATION REPORT No. 274
STATE MICHIGAN COUNTY MUSKEGON DIST. LAKESTON SEC. 12 TOWN 10N RANGE 17W
WELL No. 1 (SERIAL No. 244) FARM E BEEGLE ACRES
NAME OF STREAM OR WATERS QUADRANGLE NW NW NE
OPERATOR CONCORD OIL CO. MAP

660 Feet from North Line of Farm
90 " " East " " "
" " South " " "
" " West " " "
660 Feet from North Line of Section
" " East " " "
" " South " " "
3100 " " West " " "

- LEGEND
- LOCATION
 - ① RIG
 - ⊕ DRILLING
 - ⊗ GAS WELL
 - OIL WELL
 - ⬮ SMALL OIL WELL
 - ⊗ DRY HOLE
 - ⬮ DRY SHOWING OIL
 - ⊗ DRY SHOWING GAS
 - ⊗ ABANDONED LOCATION
 - ⬮ ABANDONED GAS WELL
 - ⬮ ABANDONED OIL WELL

NOTE: Below make tracing from map, (when no map is obtainable make sketch) showing farm, center of section, this location with measurements and also wells, dry holes, or other locations in the vicinity of this location. Make copy to keep for reference and send original to Columbus office.

Elevation
624-Dixie Plane
Table



REMARKS:

SIGNED

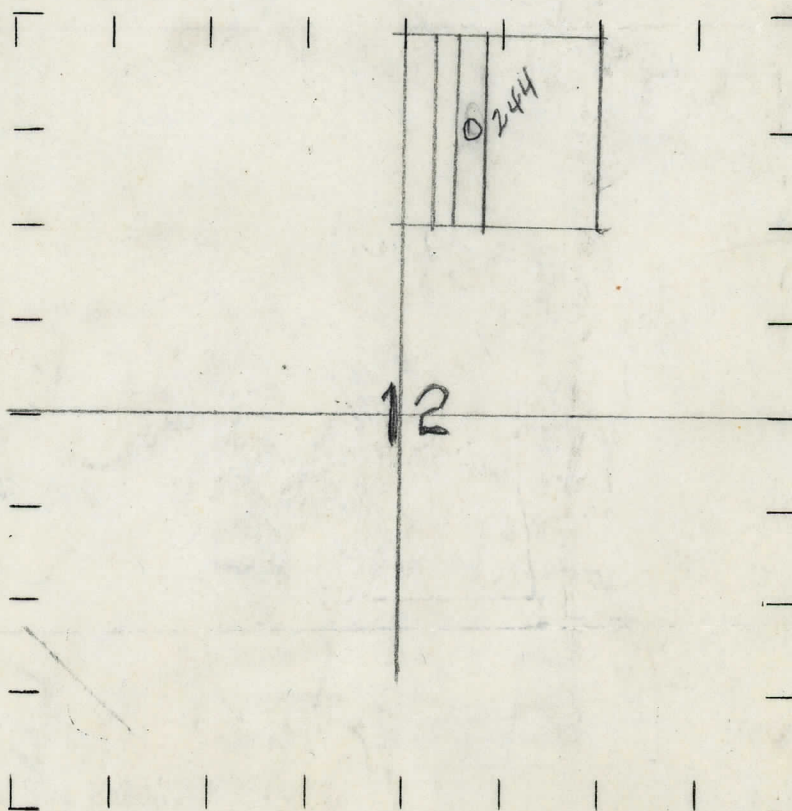
Superintendent or Foreman.

MEET NO. (SERIAL NO.) EYBN
STATE MICHIGAN COUNTY MUSKEGON DIST. TWP. LAKETON. SEC. 12 TOWN 10-N RANGE 17-W.
DATE 1/21/22. LOCATION REFORI NO.
WELL No. 1 (SERIAL No. 244) FARM E. BEEGLE ACRES
NAME OF STREAM OR WATERS. QUADRANGLE NW NW NE.
OPERATOR CONCORD OIL COMPANY. MAP MUSKEGON COUNTY & LAKETON TWP.

660 Feet from North Line of Farm
90 " " East " " "
" " South " " "
" " West " " "
660 Feet from North Line of Section
3100 " " East " " "
" " South " " "
3100 " " West " " "

LEGEND
○ LOCATION
① RIG
⊕ DRILLING
⊗ GAS WELL
● OIL WELL
⬮ SMALL OIL WELL
⊗ DRY HOLE
⬮ DRY SHOWING OIL
⊗ DRY SHOWING GAS
⬮ ABANDONED LOCATION
⊗ ABANDONED GAS WELL
⬮ ABANDONED OIL WELL

NOTE: Below make tracing from map, (when no map is obtainable make sketch) showing farm, center of section, this location with measurements and also wells, dry holes, or other locations in the vicinity of this location. Make copy to keep for reference and send original to Columbus office.



REMARKS:

SIGNED

Superintendent or Foreman.

WELL No. J (SERIAL No. 244) E. BEAGLE
STATE MICHIGAN COUNTY MUSKEGON DIST. TWP. TAVELON SEC. 12 TOWN 10 N RANGE 17 W
DATE April 6th, 1929.

Michigan Producing DIVISION
COMPLETION RECORD No. -244-

STATE Michigan COUNTY Muskegon DIST. TWP. TAVELON SEC. 12 TOWN 10 N RANGE 17 W
PREC.

WELL No. 1 (SERIAL No. 244) FARM E. Beagle ACRES

NAME OF STREAM OR WATERS. QUADRANGLE

OPERATOR Concord Oil Co. MAP

LOCATION REPORT SENT IN (DATE) January 30th, 1929.

WELL STARTED (DATE) January 1929. WELL COMPLETED (DATE) April 6th, 1929.

OIL WELL	GAS WELL	DRY HOLE	ABANDONED WELL
----------	---------------------	---------------------	---------------------------

CROSS OUT THREE OF THE ABOVE
WELL RECORD

DATE OF SHOT. NUMBER OF QUARTS.

1st 24 HOURS PRODUCTION				BARRELS OR FEET
2nd "	"	"		" " "
3rd "	"	"		" " "
4th "	"	"		" " "
5th "	"	"		" " "

SAND AND CASING

CASING SIZE	WEIGHT	CASING Feet Inches	SAND Name and Nature	TOP	BOTTOM	TOP PAY	BOTTOM PAY	SALT WATER
		6 1/2" 2044	sand	0	65			
			mud	65	615			
			lime	615	700			
			slate	700	866			
			red rock	866	886			
			slate	886	1430			
			shale	1430	1580			
			lime	1580	1600			
			shale	1600	1625			
			Traverse	1625	1665			oil 2064-2065'
			slate	1665	2038	Dundee	2064'	

REMARKS Int. production 244 bbls. 22 hrs.

				Rig—Rig Irons
DESCRIPTION	QUANTITY	MAKE	SIZE	MATERIAL

DATE April 27, 1929. **Michigan Producing DIVISION** **COMPLETION RECORD** No. 244

STATE Michigan COUNTY Muskegon DIST. TWP. Laketon SEC. 12 TOWN 10 N RANGE

WELL No. 1 (SERIAL No. 244) FARM E. Beegle ACRES

NAME OF STREAM OR WATERS QUADRANGLE

OPERATOR Concord Oil Company MAP

LOCATION REPORT SENT IN (DATE)

WELL STARTED (DATE) WELL COMPLETED (DATE) April 3, 1929.

OIL WELL

~~GAS WELL~~

~~DRY HOLE~~

~~ABANDONED WELL~~

CROSS OUT THREE OF THE ABOVE
WELL RECORD

DATE OF SHOT	NUMBER OF QUARTS	BARRELS OR FEET
1st 24 HOURS PRODUCTION	<u>244 bbls. 22 hrs.</u>	
2nd " " "		" " "
3rd " " "		" " "
4th " " "		" " "
5th " " "		" " "

SAND AND CASING

CASING SIZE	WEIGHT	CASING Feet Inches	SAND Name and Nature	TOP	BOTTOM	TOP PAY	BOTTOM PAY	SALT WATER
<u>6 1/2"</u>		<u>2044</u>	<u>Sand</u>	<u>0</u>	<u>65</u>			
			<u>Mud</u>	<u>65</u>	<u>615</u>			
			<u>Lime</u>	<u>615</u>	<u>700</u>			
			<u>Slate</u>	<u>700</u>	<u>866</u>			
			<u>Redrock</u>	<u>866</u>	<u>866</u>			
			<u>Slate</u>	<u>1430</u>	<u>1580</u>			
			<u>Lime</u>	<u>1580,</u>	<u>1600</u>			
			<u>shale</u>	<u>1600</u>	<u>1665</u>			
			<u>Traverse</u>	<u>1665</u>	<u>2038</u>			
			<u>Slate</u>	<u>2038</u>	<u>2044</u>	<u>011 2064-</u>	<u>2065</u>	
			<u>Dundee</u>	<u>2064</u>				

REMARKS