



Western Michigan University
ScholarWorks at WMU

Legacy Scout Tickets from Pure Oil Company

8-20-2021

MGRRE_PureOilScoutTickets_Brunt, E. Van_1_unk

MGRRE

Western Michigan University

Follow this and additional works at: <https://scholarworks.wmich.edu/pure>



Part of the Geology Commons

WMU ScholarWorks Citation

MGRRE, "MGRRE_PureOilScoutTickets_Brunt, E. Van_1_unk" (2021). *Legacy Scout Tickets from Pure Oil Company*. 7111.

<https://scholarworks.wmich.edu/pure/7111>

This Document is brought to you for free and open access via ScholarWorks at WMU. It has been accepted for inclusion in Legacy Scout Tickets from Pure Oil Company by an authorized administrator of ScholarWorks at WMU. See the National Digital Catalogue - Science Base Catalogue for more collections submitted by MGRRE.



MGRRE_PureOilScoutTickets_Brunt, E. Van_1_unk

API unk

Permit Number unk

Lease Name Brunt, E. Van

Well Number 1

County Muskegon

Township 10N

Range 16W

Section 15

2021 DEQ or Pure co_name Vane Howard et al

Pure Number 248

Latitude 43.2560395

Longitude -86.193873

THE PURE OIL COMPANY

DATE 1-22-28.9

LOCATION REPORT

No.

STATE MICHIGAN COUNTY MUSKEGON DIST. MUSKEGON SEC. 15 TOWN 10N RANGE 16W
PREC. E. VAN BRUNTWELL No. 1 (SERIAL No. 248) FARM E. VAN BRUNT 10 ACRESNAME OF STREAM OR WATERS _____ QUADRANGLE SE NE-15-10-16-WOPERATOR VANE HOWARD ET AL MAP MUSKEGON TWP MUSKEGON CO.150 Feet from North Line of Farm250 " " East " " "

" " South " " "

" " West " " "

2130 Feet from North Line of Section250 " " East " " "

" " South " " "

" " West " " "

LEGEND

O LOCATION

① RIG

⊕ DRILLING

⊙ GAS WELL

● OIL WELL

⊙ SMALL OIL WELL

⊙ DRY HOLE

⊙ DRY SHOWING OIL

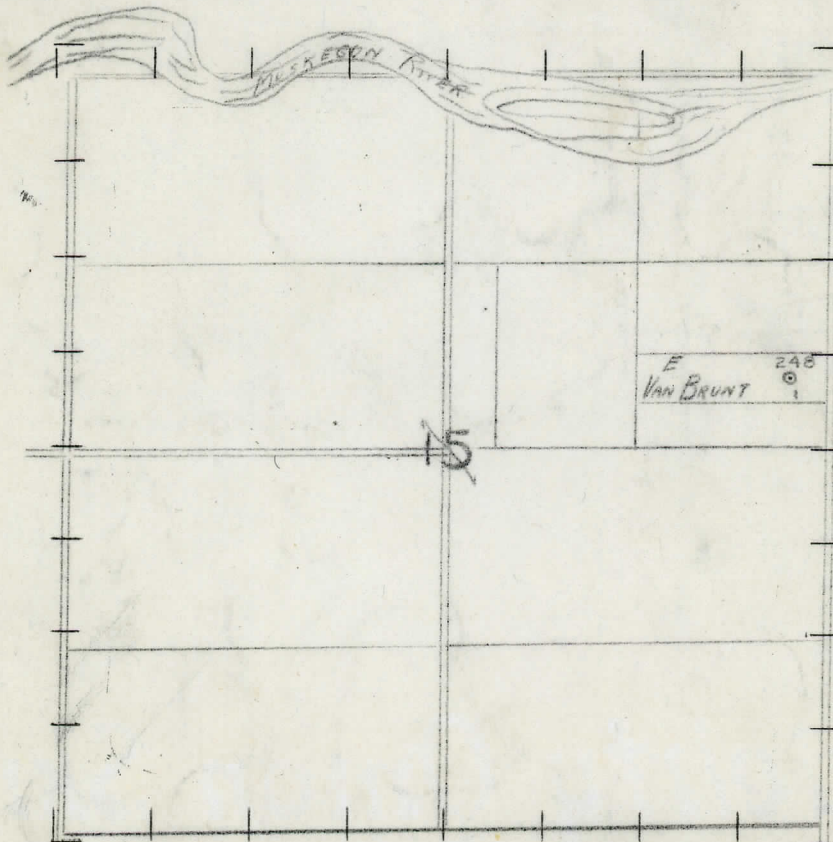
⊙ DRY SHOWING GAS

⊙ ABANDONED LOCATION

⊙ ABANDONED GAS WELL

⊙ ABANDONED OIL WELL

NOTE: Below make tracing from map, (when no map is obtainable make sketch) showing farm, center of section, this location with measurements and also wells, dry holes, or other locations in the vicinity of this location. Make copy to keep for reference and send original to Columbus office.



REMARKS:

SIGNED

Superintendent or Foreman.

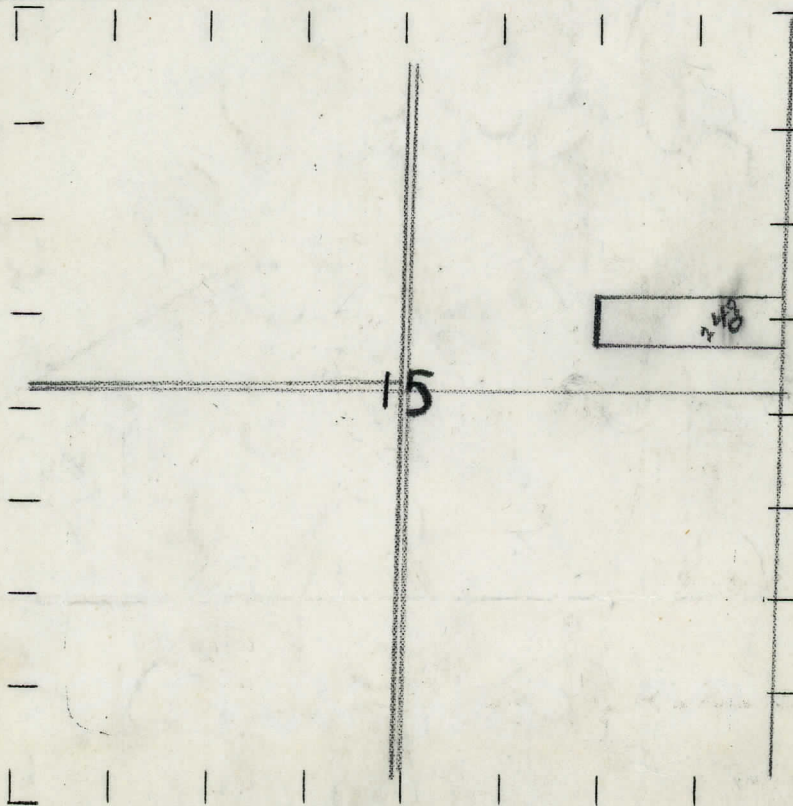
STATE Michigan COUNTY Muskegon DIST. TWP. Muskegon. SEC. 15 TOWN. 10-N. RANGE. 16-W.
WELL No. 1 (SERIAL No. 248) FARM E. Van Brunt. ACRES
NAME OF STREAM OR WATERS QUADRANGLE SE NE 15-10-16-W.
OPERATOR Vane Howard et al MAP MUSKEGON COUNTY & TOWNSHIP.

150 Feet from North Line of Farm
250 " " East " " "
" " South " " "
" " West " " "
2130 Feet from North Line of Section
250 " " East " " "
" " South " " "
" " West " " "

LEGEND

○ LOCATION	⊕ DRY HOLE
① RIG	⊕ DRY SHOWING OIL
⊕ DRILLING	⊕ DRY SHOWING GAS
⊕ GAS WELL	⊕ ABANDONED LOCATION
● OIL WELL	⊕ ABANDONED GAS WELL
⊕ SMALL OIL WELL	⊕ ABANDONED OIL WELL

NOTE: Below make tracing from map, (when no map is obtainable make sketch) showing farm, center of section, this location with measurements and also wells, dry holes, or other locations in the vicinity of this location. Make copy to keep for reference and send original to Columbus office.



REMARKS:

SIGNED

Superintendent or Foreman.

NOTE:—MAKE COPY TO KEEP FOR REFERENCE AND SEND ORIGINAL TO CHICAGO OFFICE. LIST MATERIAL CHARGEABLE TO WELL ON OTHER SIDE.

SIGNED _____ SUPT. OR FOREMAN _____