



Western Michigan University  
ScholarWorks at WMU

---

Legacy Scout Tickets from Pure Oil Company

---

8-20-2021

**MGRRE\_PureOilScoutTickets\_Bishop\_1\_21121003170000**

MGRRE

*Western Michigan University*

Follow this and additional works at: <https://scholarworks.wmich.edu/pure>



Part of the Geology Commons

---

#### WMU ScholarWorks Citation

MGRRE, "MGRRE\_PureOilScoutTickets\_Bishop\_1\_21121003170000" (2021). *Legacy Scout Tickets from Pure Oil Company*. 7119.

<https://scholarworks.wmich.edu/pure/7119>

This Document is brought to you for free and open access via ScholarWorks at WMU. It has been accepted for inclusion in Legacy Scout Tickets from Pure Oil Company by an authorized administrator of ScholarWorks at WMU. See the National Digital Catalogue - Science Base Catalogue for more collections submitted by MGRRE.



---

**MGRRE\_PureOilScoutTickets\_Bishop\_1\_21121003170000**

API 21121003170000

Permit Number 317

Lease Name Bishop

Well Number 1

County Muskegon

Township 10N

Range 16W

Section 8

2021 DEQ or Pure co\_name Puritan Oil Corporation

Pure Number 256

Latitude 43.26659

Longitude -86.24314

## CORRECTED LOCATION REPORT

DATE 2-12-29 THE PURE OIL COMPANY  
 LOCATION REPORT No. 256  
 STATE MICHIGAN COUNTY MUSKEGON DIST. MUSKEGON SEC. 8 TOWN 10N RANGE 17N  
 WELL No. 1 (SERIAL No. 256) FARM H. B. BISHOP ACRES

NAME OF STREAM OR WATERS QUADRANGLE

OPERATOR PURITAN OIL Co MAP

1020 Feet from North Line of Farm

" " East " " "

" " South " " "

" " West " " "

1025 Feet from North Line of Section 3. of E & W 1/4 Line

" " East " " "

" " South " " "

110 " " West " " "

## LEGEND

○ LOCATION

① RIG

⊕ DRILLING

⊗ GAS WELL

● OIL WELL

⊙ SMALL OIL WELL

⊖ DRY HOLE

⊗ DRY SHOWING OIL

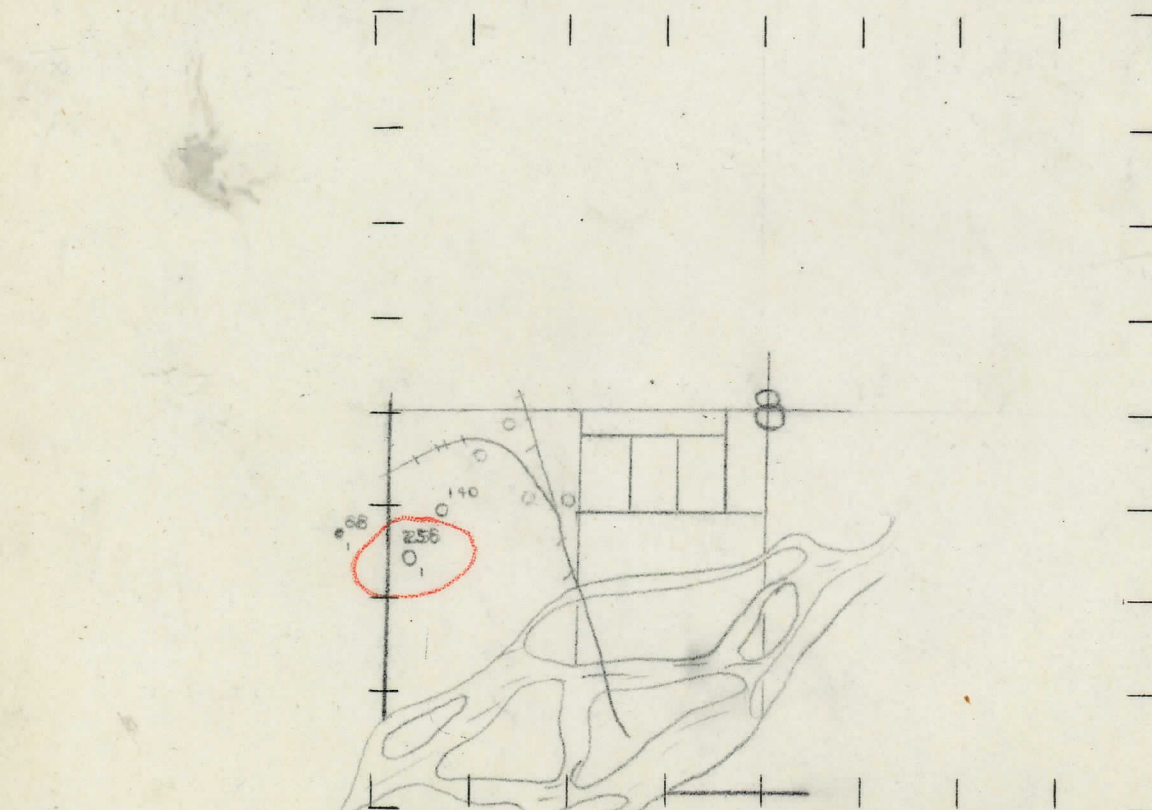
⊗ DRY SHOWING GAS

⊖ ABANDONED LOCATION

⊗ ABANDONED GAS WELL

⊖ ABANDONED OIL WELL

NOTE: Below make tracing from map, (when no map is obtainable make sketch) showing farm, center of section, this location with measurements and also wells, dry holes, or other locations in the vicinity of this location. Make copy to keep for reference and send original to Columbus office.



REMARKS:

SIGNED

Superintendent or Foreman.

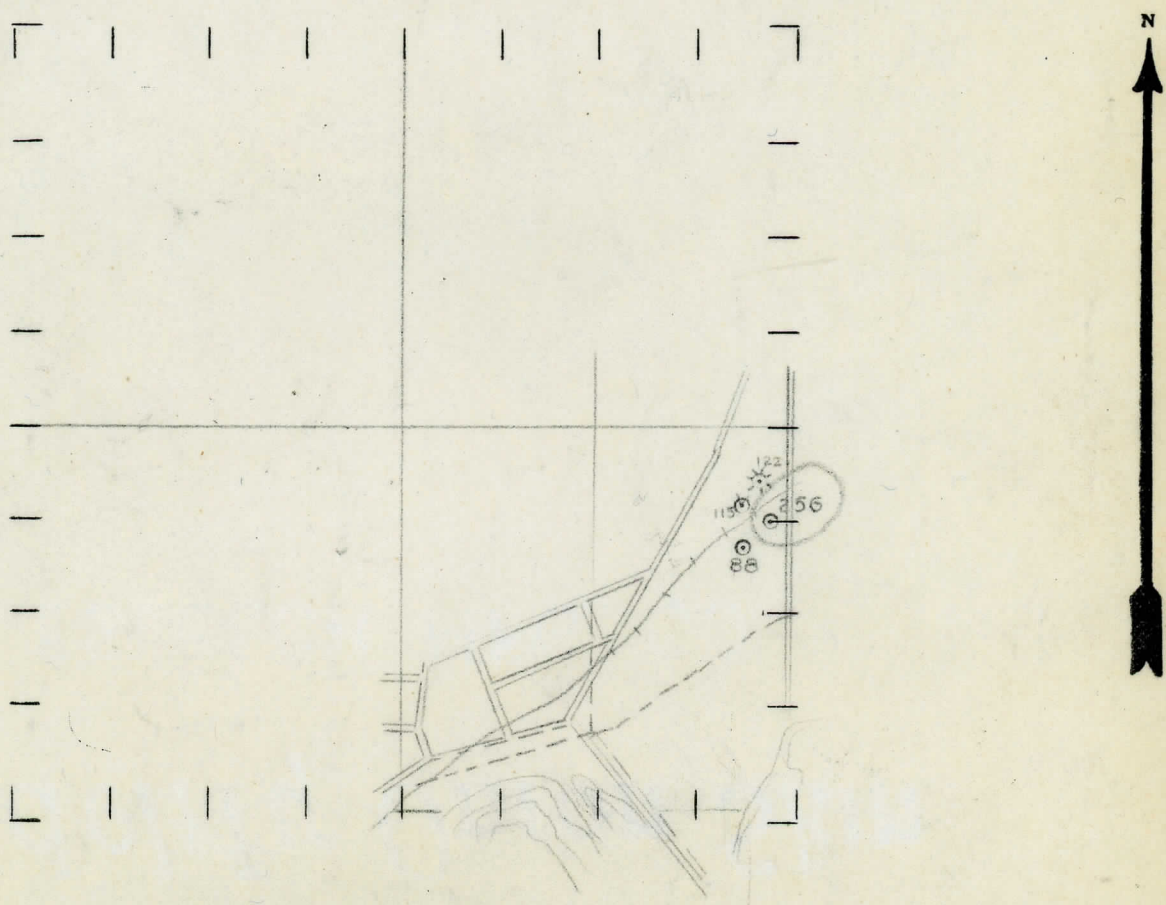


STATE MICHIGAN COUNTY MUSKEGON DIST. MUSKEGON SEC. 7 TOWN 10-N RANGE 16-W  
 WELL No. 1 (SERIAL No. 256) FARM H. BISHOP ACRES  
 NAME OF STREAM OR WATERS \_\_\_\_\_ QUADRANGLE N.E. N.E. S.E.  
 OPERATOR PURITAN Oil Co. MAP \_\_\_\_\_

\_\_\_\_\_ Feet from North Line of Farm  
 \_\_\_\_\_ " " East " " "  
 \_\_\_\_\_ " " South " " "  
 \_\_\_\_\_ " " West " " "  
 \_\_\_\_\_ Feet from North Line of Section  
 \_\_\_\_\_ " " East " " "  
 \_\_\_\_\_ " " South " " "  
 \_\_\_\_\_ " " West " " "

- LEGEND**
- |                  |                      |
|------------------|----------------------|
| ○ LOCATION       | ⊙ DRY HOLE           |
| ① RIG            | ⊙ DRY SHOWING OIL    |
| ⊕ DRILLING       | ⊙ DRY SHOWING GAS    |
| ⊙ GAS WELL       | ⊙ ABANDONED LOCATION |
| ● OIL WELL       | ⊙ ABANDONED GAS WELL |
| ⊙ SMALL OIL WELL | ⊙ ABANDONED OIL WELL |

NOTE: Below make tracing from map, (when no map is obtainable make sketch) showing farm, center of section, this location with measurements and also wells, dry holes, or other locations in the vicinity of this location. Make copy to keep for reference and send original to Columbus office.



REMARKS:

\_\_\_\_\_

\_\_\_\_\_

\_\_\_\_\_

SIGNED \_\_\_\_\_

Superintendent or Foreman.



DATE 1/20/50 LOCATION REPORT NO. 100

STATE MICHIGAN COUNTY MUSKEGON DIST. MUSKEGON SEC. 7 TOWN 10-N RANGE 16-W.

WELL No. 1 (SERIAL No. 256) FARM H. BISHOP. ACRES

NAME OF STREAM OR WATERS..... QUADRANGLE NE NE SE

OPERATOR PURITAN OIL COMPANY. MAP MUSKEGON COUNTY & TOWNSHIP.

.....150.....Feet from North Line of Farm

100 " " East " " "

..... " " South " " "

..... " " West " " "

Feet from North Line of Section

100 " " East " " "

1970 " " South " " "


----- " " West " " "

### LEGEND

### O LOCATION


① RIG

⊕ DRILLING

 GAS WELL

## ● OIL WELL

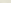
● SMALL OIL WELL

 DRY HOLE

 DRY SHOWING OIL

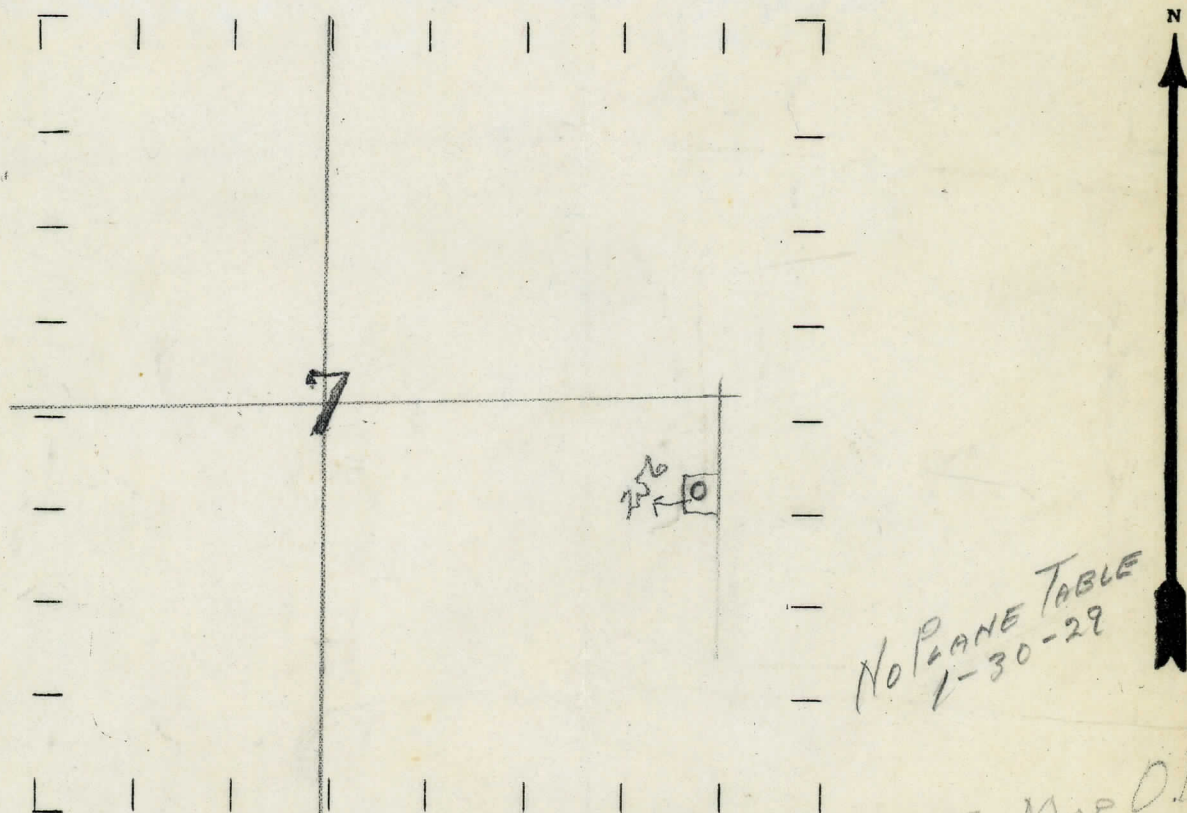
⚙ DRY SHOWING GAS

ⓧ ABANDONED LOCATION

 **ABANDONED GAS WELL**

ABANDONED OIL WELL

**NOTE:** Below make tracing from map, (when no map is obtainable make sketch) showing farm, center of section, this location with measurements and also wells, dry holes, or other locations in the vicinity of this location. Make copy to keep for reference and send original to Columbus office.



REMARKS:

SIGNED

.....  
 Superintendent or Foreman.



SIGNED \_\_\_\_\_ SUPT. OR FOREMAN