



Western Michigan University
ScholarWorks at WMU

Legacy Scout Tickets from Pure Oil Company

8-20-2021

MGRRE_PureOilScoutTickets_Cihak, Frank_1_21121003640000

MGRRE

Western Michigan University

Follow this and additional works at: <https://scholarworks.wmich.edu/pure>



Part of the Geology Commons

WMU ScholarWorks Citation

MGRRE, "MGRRE_PureOilScoutTickets_Cihak, Frank_1_21121003640000" (2021). *Legacy Scout Tickets from Pure Oil Company*. 7132.

<https://scholarworks.wmich.edu/pure/7132>

This Document is brought to you for free and open access via ScholarWorks at WMU. It has been accepted for inclusion in Legacy Scout Tickets from Pure Oil Company by an authorized administrator of ScholarWorks at WMU. See the National Digital Catalogue - Science Base Catalogue for more collections submitted by MGRRE.



MGRRE_PureOilScoutTickets_Cihak, Frank_1_21121003640000

API 21121003640000

Permit Number 364

Lease Name Cihak, Frank

Well Number 1

County Muskegon

Township 10N

Range 17W

Section 12

2021 DEQ or Pure co_name Johnson O I L Refining Company

Pure Number 269

Latitude 43.27501

Longitude -86.26581

Corrected Location Report

L
7

THE PURE OIL COMPANY

DATE 3-28-29

LOCATION REPORT

No. 269

STATE Michigan COUNTY Muskegon DIST. Laketon SEC. 12 TOWN 10N RANGE 17W

WELL No. 1 (SERIAL No. 269) FARM Cihak ACRES

NAME OF STREAM OR WATERS QUADRANGLE NE 1/4 NE 1/4

OPERATOR Johnson Oil Co MAP Laketon - 4" = 1 Mile

1170' Feet from North Line of Farm

200' " " East " " "

" " South " " "

" " West " " "

1170' Feet from North Line of Section

1174' " " East " " "

" " South " " "

" " West " " "

LEGEND

O LOCATION

① RIG

⊕ DRILLING

⊗ GAS WELL

● OIL WELL

⊙ SMALL OIL WELL

⊖ DRY HOLE

⊕ DRY SHOWING OIL

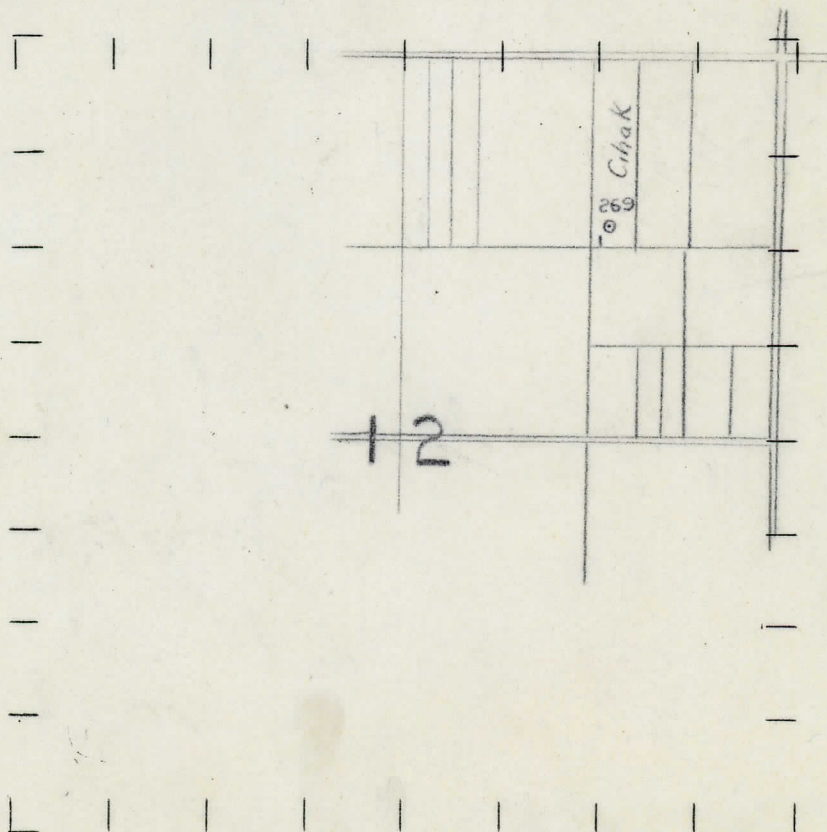
⊗ DRY SHOWING GAS

⊖ ABANDONED LOCATION

⊗ ABANDONED GAS WELL

⊙ ABANDONED OIL WELL

NOTE: Below make tracing from map, (when no map is obtainable make sketch) showing farm, center of section, this location with measurements and also wells, dry holes, or other locations in the vicinity of this location. Make copy to keep for reference and send original to Columbus office.



REMARKS:

SIGNED

Superintendent or Foreman.

DATE 2-29-29 LOCATION REPORT No. 209
STATE MICHIGAN COUNTY MUSKEGON DIST. LAKETON SEC. 12 TOWN 10N RANGE
WELL No. 1 (SERIAL No. 269) FARM K.T. MURPHY ACRES
NAME OF STREAM OR WATERS QUADRANGLE
OPERATOR JOHNSON OIL CO. MAP

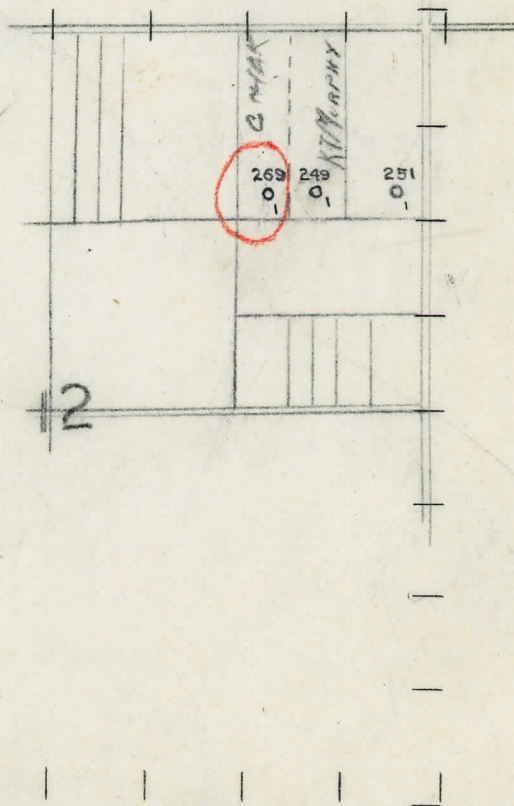
Feet from North Line of Farm
300 " " East " " "
200 " " South " " "
200 " " West " " "
Feet from North Line of Section
1100 " " East " " "
1125 " " South " " "
" " West " " "

LEGEND

- | | |
|------------------|----------------------|
| ○ LOCATION | ⊙ DRY HOLE |
| ① RIG | ⊙ DRY SHOWING OIL |
| ⊕ DRILLING | ⊙ DRY SHOWING GAS |
| ⊙ GAS WELL | ⊙ ABANDONED LOCATION |
| ● OIL WELL | ⊙ ABANDONED GAS WELL |
| ⊙ SMALL OIL WELL | ⊙ ABANDONED OIL WELL |

NOTE: Below make tracing from map, (when no map is obtainable make sketch) showing farm, center of section, this location with measurements and also wells, dry holes, or other locations in the vicinity of this location. Make copy to keep for reference and send original to Columbus office.

Elevation 624
Dixie Plane Table



REMARKS:

SIGNED

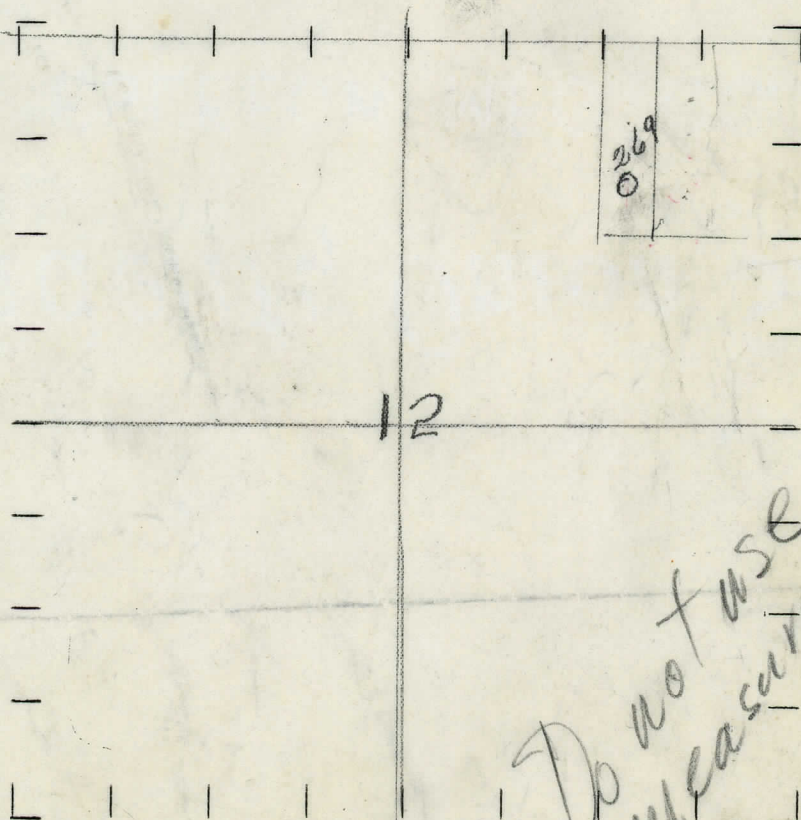
Superintendent or Foreman.

Feet from North Line of Farm
300 " " East " " "
300 " " South " " "
" " West " " "
Feet from North Line of Section
2340 " " East " " "
2340 " " South " " "
" " West " " "

LEGEND

- | | |
|------------------|----------------------|
| ○ LOCATION | ⊕ DRY HOLE |
| ① RIG | ⊕ DRY SHOWING OIL |
| ⊕ DRILLING | ⊕ DRY SHOWING GAS |
| ⊕ GAS WELL | ⊕ ABANDONED LOCATION |
| ● OIL WELL | ⊕ ABANDONED GAS WELL |
| ⊕ SMALL OIL WELL | ⊕ ABANDONED OIL WELL |

NOTE: Below make tracing from map, (when no map is obtainable make sketch) showing farm, center of section, this location with measurements and also wells, dry holes, or other locations in the vicinity of this location. Make copy to keep for reference and send original to Columbus office.



Do not use measurements.
WAITING FOR PLANE TABLE LOCATIONS

REMARKS:

SIGNED

Superintendent or Foreman.

WELL No. 1 (SERIAL No. 269) FARM K.T. Murphy ACRES

NAME OF STREAM OR WATERS _____ QUADRANGLE _____

OPERATOR Johnson Oil Co. MAP _____

LOCATION REPORT SENT IN (DATE) February 12th, 1929.

WELL STARTED (DATE) February 1929. WELL COMPLETED (DATE) March 16th, 1929.

OIL WELL

GAS WELL

DRY HOLE

ABANDONED WELL

**CROSS OUT THREE OF THE ABOVE
WELL RECORD**

DATE OF SHOT _____ NUMBER OF QUARTS _____

1st 24 HOURS PRODUCTION _____ BARRELS OR FEET _____

2nd " " "

3rd " " " " " "

4th " " " " " " " "

5th " " " " " "

SAND AND CASING

[illegible]

REMARKS	150 bbls.oil.				
---------	---------------	--	--	--	--

MATERIAL	SIZE	MAKE	QUANTITY	DESCRIPTION
Rig—Rig Irons				

COMPLETION RECORD

DATE Aug. 17th, 1929.

No. -269-

STATE Michigan COUNTY Muskegon DIST. Laketon SEC. 12 TOWN 10 N RANGE 17 W
TWP. Laketon
PREC.

WELL No. 1 (SERIAL No. 269) FARM Cihak _____ ACRES

NAME OF STREAM OR WATERS _____ QUADRANGLE _____

OPERATOR Johnson Oil Co. MAP

LOCATION REPORT SENT IN (DATE) 3/12/29

WELL STARTED (DATE) February 1929. WELL COMPLETED (DATE) August 18th, 1929.

OIL WELL

GAS WELL

DRY HOLE

ABANDONED

CROSS OUT THREE OF THE ABOVE
WELL RECORD

DATE OF SHOT _____ NUMBER OF QUARTS _____

1st 24 HOURS PRODUCTION 100 bbls. BARRELS OR FEET

[illegible]

3rd " " " " " " "

4th " " "

5th " " " " " "

SAND AND CASING

[illegible]

REMARKS	This well was completed in March, 1929, as a Traverse producer, which exhausted and drilled to Dundee, where is producing.									
---------	--	--	--	--	--	--	--	--	--	--

NOTE:—MAKE COPY TO KEEP FOR REFERENCE AND SEND ORIGINAL TO CHICAGO OFFICE. LIST MATERIAL CHARGEABLE TO WELL ON OTHER SIDE.

SIGNED,

SUPT. OR FOREMAN