



Western Michigan University  
ScholarWorks at WMU

---

Legacy Scout Tickets from Pure Oil Company

---

8-20-2021

## MGRRE\_PureOilScoutTickets\_Blue Lake Fox Farm or Ranch\_1\_unk

MGRRE

*Western Michigan University*

Follow this and additional works at: <https://scholarworks.wmich.edu/pure>



Part of the Geology Commons

---

### WMU ScholarWorks Citation

MGRRE, "MGRRE\_PureOilScoutTickets\_Blue Lake Fox Farm or Ranch\_1\_unk" (2021). *Legacy Scout Tickets from Pure Oil Company*. 7136.

<https://scholarworks.wmich.edu/pure/7136>

This Document is brought to you for free and open access via ScholarWorks at WMU. It has been accepted for inclusion in Legacy Scout Tickets from Pure Oil Company by an authorized administrator of ScholarWorks at WMU. See the National Digital Catalogue - Science Base Catalogue for more collections submitted by MGRRE.



---

## MGRRE\_PureOilScoutTickets\_Blue Lake Fox Farm or Ranch\_1\_unk

API unk

Permit Number unk

Lease Name Blue Lake Fox Farm or Ranch

Well Number 1

County Muskegon

Township 10N

Range 17W

Section 12

2021 DEQ or Pure co\_name East Ohio Gas Co

Pure Number 273

Latitude 43.2707331

Longitude -86.2720544

## THE PURE OIL COMPANY

DATE 2-13-29

## LOCATION REPORT

No. 273STATE MICHIGAN COUNTY MUSKEGON DIST. LAKETON SEC. 12 TOWN 10N RANGE 17WWELL No. 1 (SERIAL No. 273) FARM BLUE LAKE FOX FARM ACRES

NAME OF STREAM OR WATERS QUADRANGLE

OPERATOR EAST OHIO GAS CO. MAP150 Feet from North Line of Farm

" " East " " "

" " South " " "

150' " " West " " "150' Feet from North Line of Section2150' " " East " " "

" " South " " "

" " West " " "

## LEGEND

O LOCATION

① RIG

⊕ DRILLING

⊗ GAS WELL

● OIL WELL

⦿ SMALL OIL WELL

⊕ DRY HOLE

⦿ DRY SHOWING OIL

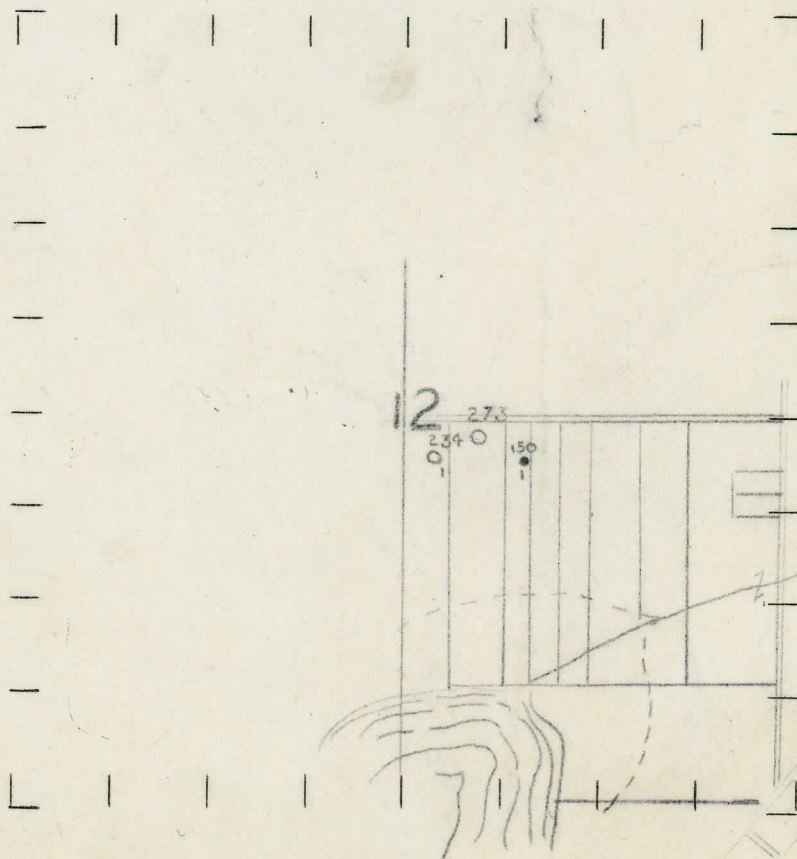
⊗ DRY SHOWING GAS

⦿ ABANDONED LOCATION

⦿ ABANDONED GAS WELL

⦿ ABANDONED OIL WELL

NOTE: Below make tracing from map, (when no map is obtainable make sketch) showing farm, center of section, this location with measurements and also wells, dry holes, or other locations in the vicinity of this location. Make copy to keep for reference and send original to Columbus office.



REMARKS:

SIGNED

Superintendent or Foreman.

W. J. Compton  
Trip Map  
JTB



DALE 5-12-52

ГОСАТОН ВЕБОВТ

№ 512

DATE 2/9/29

## LOCATION REPORT

No.

STATE Michigan COUNTY Washtenaw DIST. Cuberton SEC. 12 TOWN 10-M RANGE 17-W  
TWP. Cuberton PREC.

WELL No. 1 (SERIAL No. 273) FARM Blue Lake Fox Ranch ACRES

NAME OF STREAM OR WATERS..... QUADRANGLE *n.w.n.e. sec. 12*

OPERATOR East Ohio Gas Co. MAP Musk. Co. & Laketon Twp.

.....150'.....Feet from North Line of Farm

..... " " East " " "

..... " " South " " "

150' " " West " " "

2790' ..... Feet from North Line of Section

----- " " East " " "

----- " " South " " "

3440' " " West " " "

### LEGEND

### ○ LOCATION


① RIG

⊕ DRILLING

 GAS WELL

## ● OIL WELL

● SMALL OIL WELL

 DRY HOLE

**• DRY SHOWING OIL**

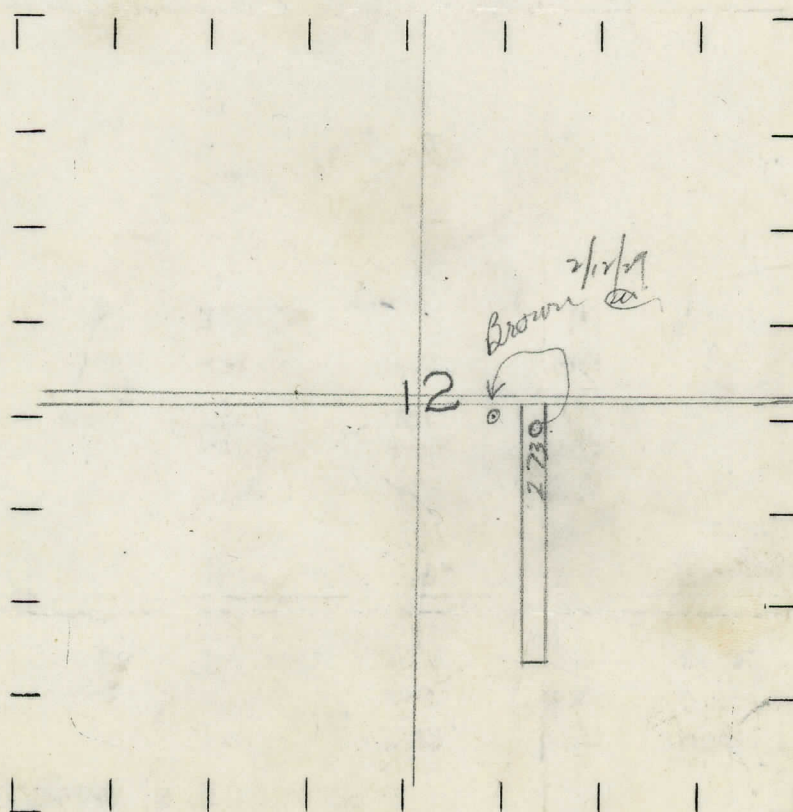
☞ DRY SHOWING GAS

**ABANDONED LOCATION**

## ABANDONED GAS WELL

**ABANDONED OIL WELL**

NOTE: Below make tracing from map, (when no map is obtainable make sketch) showing farm, center of section, this location with measurements and also wells, dry holes, or other locations in the vicinity of this location. Make copy to keep for reference and send original to Columbus office.



REMARKS:

SIGNED

.....  
 Superintendent or Foreman.



Michigan Producing DIVISION  
DATE April 6th, 1929. COMPLETION RECORD No. 273

STATE Michigan COUNTY Muskegon DIST. TWP. Laketon SEC. 12 TOWN 10 N RANGE 17 W  
PREC.

WELL No. 1 (SERIAL No. 273) FARM Blue Lake Fox Farm ACRES

NAME OF STREAM OR WATERS QUADRANGLE

OPERATOR East Ohio Gas Co. MAP

LOCATION REPORT SENT IN (DATE) February 13th, 1929.

WELL STARTED (DATE) February 1929. WELL COMPLETED (DATE) April 6th, 1929.

☐ OIL WELL

☒ GAS WELL

☐ DRY HOLE

☐ ABANDONED WELL

CROSS OUT THREE OF THE ABOVE  
WELL RECORD

DATE OF SHOT				NUMBER OF QUARTS		
1st 24 HOURS PRODUCTION				BARRELS OR FEET		
2nd	"	"	"	"	"	"
3rd	"	"	"	"	"	"
4th	"	"	"	"	"	"
5th	"	"	"	"	"	"

SAND AND CASING

CASING SIZE	WEIGHT	CASING Feet Inches	SAND Name and Nature	TOP	BOTTOM	TOP PAY	BOTTOM PAY	SALT WATER
10"		253	sand	0	60			
8 1/2"		361	mud	60	253			
6 1/2"		2050	sand	253	263	Dundee	2050'	
			slate	263	215		T.D.	2053'
			sand	315	330			
			slate	330	600	slate	1180-1400	
			lime	600	675	br. shale	1400-1595	
			slate	675	860	lime	1595-1600	
			redrock	860	880	slate	1600-1660	
			slate	880	1160	Traverse	1660-2115	
			sand	1160	1180	sandy lime	2015-2050	

REMARKS oil show 1677-1679' 3 gal. per hr.  
water 1785-1790'  
water 1965-1970' H.F.  
oil & Gas 2052-2053'  
Int. production 750' bbls.



SIGNED \_\_\_\_\_ SUPT. OR FOREMAN