



Western Michigan University  
ScholarWorks at WMU

---

Legacy Scout Tickets from Pure Oil Company

---

8-20-2021

## MGRRE\_PureOilScoutTickets\_Continental Motors Corp\_10\_21121004020000

MGRRE  
*Western Michigan University*

Follow this and additional works at: <https://scholarworks.wmich.edu/pure>



Part of the Geology Commons

---

### WMU ScholarWorks Citation

MGRRE, "MGRRE\_PureOilScoutTickets\_Continental Motors Corp\_10\_21121004020000" (2021). *Legacy Scout Tickets from Pure Oil Company*. 7140.  
<https://scholarworks.wmich.edu/pure/7140>

This Document is brought to you for free and open access via ScholarWorks at WMU. It has been accepted for inclusion in Legacy Scout Tickets from Pure Oil Company by an authorized administrator of ScholarWorks at WMU. See the National Digital Catalogue - Science Base Catalogue for more collections submitted by MGRRE.



---

MGRRE\_PureOilScoutTickets\_Continental Motors Corp\_10\_21121004020000

API 21121004020000

Permit Number 402

Lease Name Continental Motors Corp

Well Number 10

County Muskegon

Township 10N

Range 16W

Section 22

2021 DEQ or Pure co\_name Continental Motors Corporation

Pure Number 277

Latitude 43.24577

Longitude -86.19322

## WELL REPORT - OUTSIDE OPERATIONS

SERIAL NO. **277**

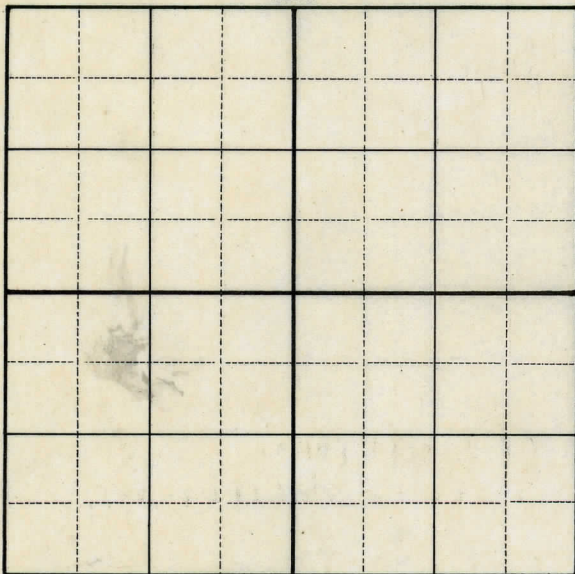
STATE Michigan ~~PSH~~ Muskegon CO.  
OPERATOR Continental Motor Corp.  
FARM Continental Motors Corp. WELL NO. 10  
~~STATE~~ Muskegon S. 22 T. 10N R. 16W  
LOC. SW NW NE

WILDCAT ☐ FIELD ☐ FIELD NAME \_\_\_\_\_

MAP NO. \_\_\_\_\_ CO-ORD. \_\_\_\_\_ ELEV. \_\_\_\_\_

STATUS Plugged and Abandoned 1-31-51.  
Total Depth 1722½'.

NORTH

DATE 3-5-51 SCOUT H. J. G.



Michigan Producing DIVISION

## COMPLETION RECORD

No. 277

WELL No. 10 (SERIAL No. 277) FARM Cont. Motors Corp. ACRES           

NAME OF STREAM OR WATERS \_\_\_\_\_ QUADRANGLE \_\_\_\_\_

OPERATOR Cont. Motors Corp. MAP                     

LOCATION REPORT SENT IN (DATE) February 18th, 1929.

WELL STARTED (DATE) February 1929. WELL COMPLETED (DATE) March 2nd, 1929.

## OIL WELL

## GAS WELL

## DRY HOLE

## ABANDONED WELL

**CROSS OUT THREE OF THE ABOVE**

## WELL RECORD

DATE OF SHOT DIXIE 1 mile 1951 NUMBER OF QUARTS                     

1st 24 HOURS PRODUCTION \_\_\_\_\_ BARRELS OR FEET

[illegible]

3rd " " " " " "

4th " " " " " " " "

5th " " "

---

## SAND AND CASING

[illegible]

REMARKS.

**SIGNED**

**SUPT. OR FOREMAN**



THE PURE OIL COMPANY  
LOCATION REPORT

No. **277**

DATE **2-13-29**

STATE **Michigan** COUNTY **Muskegon** DIST. **Muskegon** SEC. **22** TOWN **10N** RANGE **16W**  
WELL No. **10** (SERIAL No. **277**) FARM **Continental Motors Corp - Fee** ACRES

NAME OF STREAM OR WATERS QUADRANGLE

OPERATOR **Continental Motors Corp** MAP

Feet from North Line of Farm

" " East " " "

**250** " " South " " "

**250** " " West " " "

**1070** Feet from North Line of Section

**2390** " " East " " "

" " South " " "

" " West " " "

LEGEND

O LOCATION

① RIG

⊕ DRILLING

⊗ GAS WELL

● OIL WELL

⬮ SMALL OIL WELL

⊕ DRY HOLE

⬮ DRY SHOWING OIL

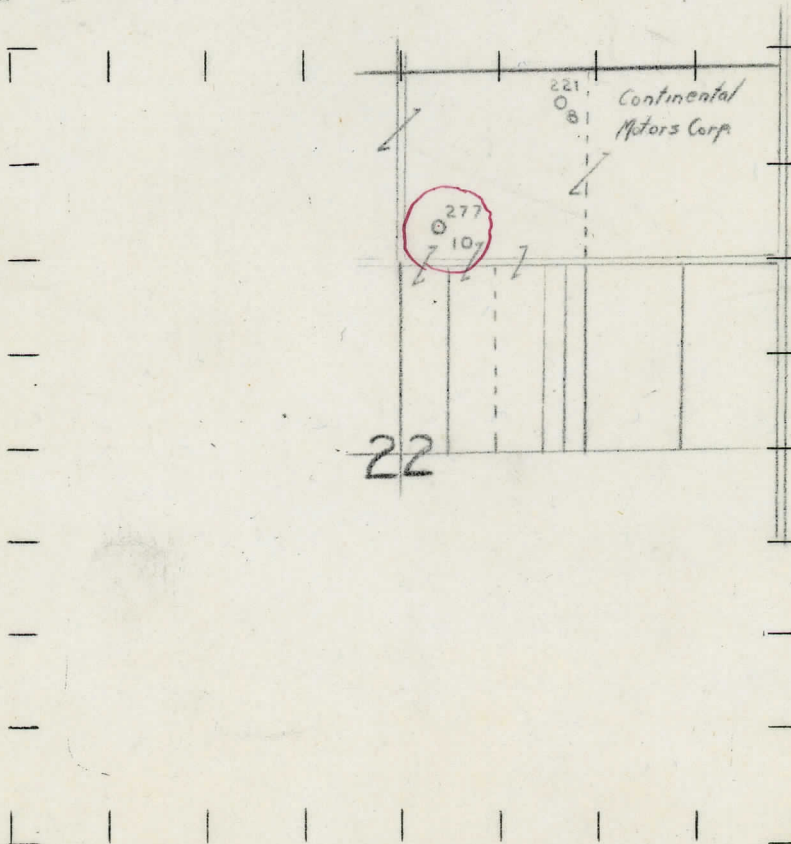
⊗ DRY SHOWING GAS

⊕ ABANDONED LOCATION

⬮ ABANDONED GAS WELL

⬮ ABANDONED OIL WELL

NOTE: Below make tracing from map, (when no map is obtainable make sketch) showing farm, center of section, this location with measurements and also wells, dry holes, or other locations in the vicinity of this location. Make copy to keep for reference and send original to Columbus office.



REMARKS:

SIGNED

Superintendent or Foreman.



DATE 2/19/29 LOCATION REPORT No. 111

STATE Michigan COUNTY Muskegon DIST. TWP. Muskegon SEC. 22 TOWN 10-N RANGE 16-W

WELL No. 10 (SERIAL No. 277) FARM 1-11 ACRES

NAME OF STREAM OR WATERS QUADRANGLE

OPERATOR Continental Motors Corp. MAP Muskegon Co. & Township

Feet from North Line of Farm

250 East 250 South 1100 West 2460

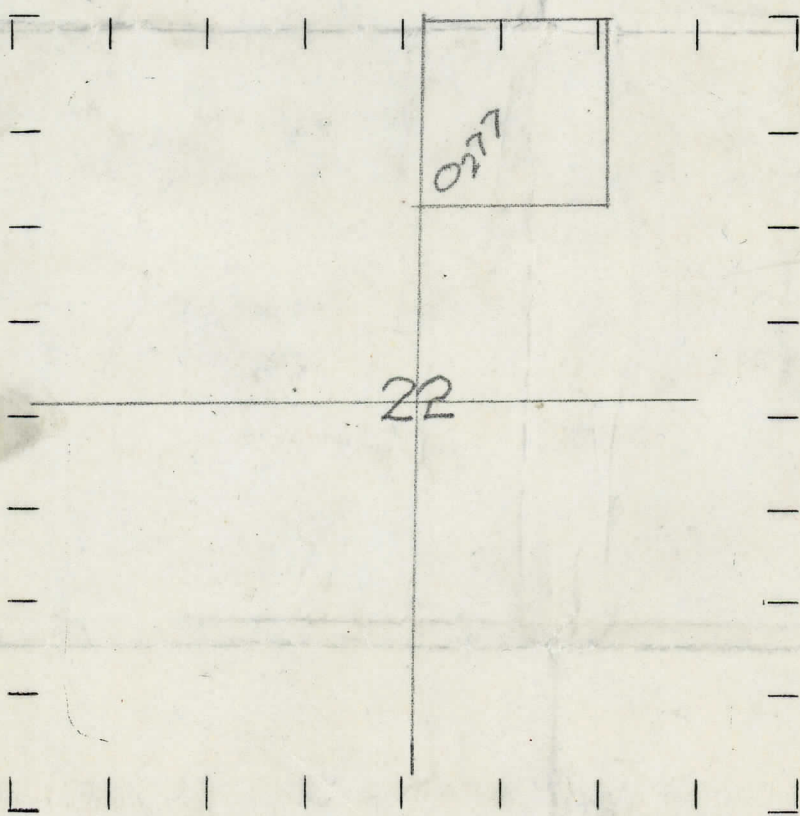
Feet from North Line of Section

East South West

LEGEND

- O LOCATION
- ⊕ RIG
- ⊕ DRILLING
- ⊕ GAS WELL
- OIL WELL
- ⊕ SMALL OIL WELL
- ⊕ DRY HOLE
- ⊕ DRY SHOWING OIL
- ⊕ DRY SHOWING GAS
- ⊕ ABANDONED LOCATION
- ⊕ ABANDONED GAS WELL
- ⊕ ABANDONED OIL WELL

NOTE: Below make tracing from map, (when no map is obtainable make sketch) showing farm, center of section, this location with measurements and also wells, dry holes, or other locations in the vicinity of this location. Make copy to keep for reference and send original to Columbus office.



REMARKS:

SIGNED

Superintendent or Foreman.



NOTE:—MAKE COPY TO KEEP FOR REFERENCE AND SEND ORIGINAL TO CHICAGO OFFICE. LIST MATERIAL CHARGEABLE TO WELL ON OTHER SIDE.

SIGNED \_\_\_\_\_ SUPT. OR FOREMAN \_\_\_\_\_