



Western Michigan University
ScholarWorks at WMU

Legacy Scout Tickets from Pure Oil Company

8-20-2021

MGRRE_PureOilScoutTickets_Continental Motors Corp_11_21121004010000

MGRRE
Western Michigan University

Follow this and additional works at: <https://scholarworks.wmich.edu/pure>



Part of the Geology Commons

WMU ScholarWorks Citation

MGRRE, "MGRRE_PureOilScoutTickets_Continental Motors Corp_11_21121004010000" (2021). *Legacy Scout Tickets from Pure Oil Company*. 7149.
<https://scholarworks.wmich.edu/pure/7149>

This Document is brought to you for free and open access via ScholarWorks at WMU. It has been accepted for inclusion in Legacy Scout Tickets from Pure Oil Company by an authorized administrator of ScholarWorks at WMU. See the National Digital Catalogue - Science Base Catalogue for more collections submitted by MGRRE.



MGRRE_PureOilScoutTickets_Continental Motors Corp_11_21121004010000

API 21121004010000

Permit Number 401

Lease Name Continental Motors Corp

Well Number 11

County Muskegon

Township 10N

Range 16W

Section 22

2021 DEQ or Pure co_name Continental Motors Corporation

Pure Number 286

Latitude 43.24826

Longitude -86.19473

THE PURE OIL COMPANY

LOCATION REPORT

DATE 3-3-29No. 286STATE MICHIGAN COUNTY MUSKEGON DIST. MUSKEGON SEC. 22 TOWN 10N RANGE 16WWELL No. 11 (SERIAL No. 286) FARM FEE ACRESNAME OF STREAM OR WATERS QUADRANGLE E 1/2 NENWOPERATOR CONTINENTAL MOTORS CORP. MAP MUSKEGON TWP - 4" = 1 MILE200 Feet from North Line of Farm200 " " East " " "

" " South " " "

" " West " " "

200 Feet from North Line of Section

" " East " " "

" " South " " "

2440 " " West " " "

LEGEND

O LOCATION

① RIG

⊕ DRILLING

⊗ GAS WELL

● OIL WELL

⬮ SMALL OIL WELL

⬮ DRY HOLE

⬮ DRY SHOWING OIL

⬮ DRY SHOWING GAS

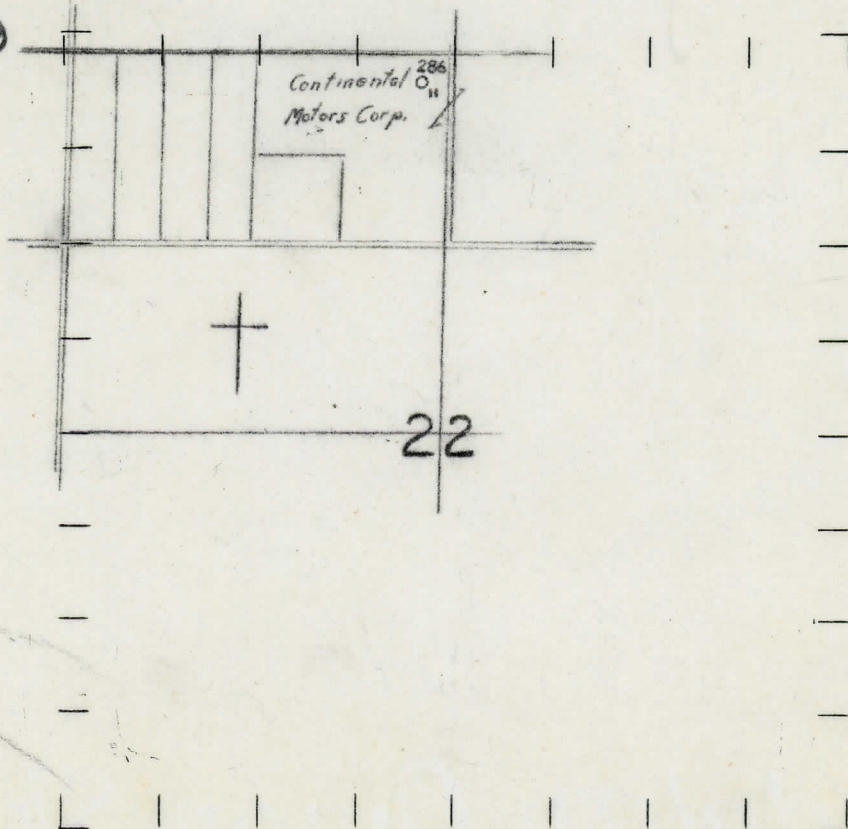
⬮ ABANDONED LOCATION

⬮ ABANDONED GAS WELL

⬮ ABANDONED OIL WELL

NOTE: Below make tracing from map, (when no map is obtainable make sketch) showing farm, center of section, this location with measurements and also wells, dry holes, or other locations in the vicinity of this location. Make copy to keep for reference and send original to Columbus office.

Elevation - 639



REMARKS:

SIGNED

Superintendent or Foreman.

DATE 2/22/29. LOCATION REPORT No.

STATE MICHIGAN COUNTY MUSKEGON DIST. MUSKEGON SEC. 22 TOWN 10-N RANGE 16-W.

WELL No. 11 (SERIAL No. 286) FARM. ACRES

NAME OF STREAM OR WATERS QUADRANGLE E¹/₂--NE NW

OPERATOR CONTINENTAL MOTORS CORPORATION MAP MUSKEGON COUNTY & TOWNSHIP.

200 Feet from North Line of Farm

200 " " East " " "

" " South " " "

" " West " " "

200 Feet from North Line of Section

" " East " " "

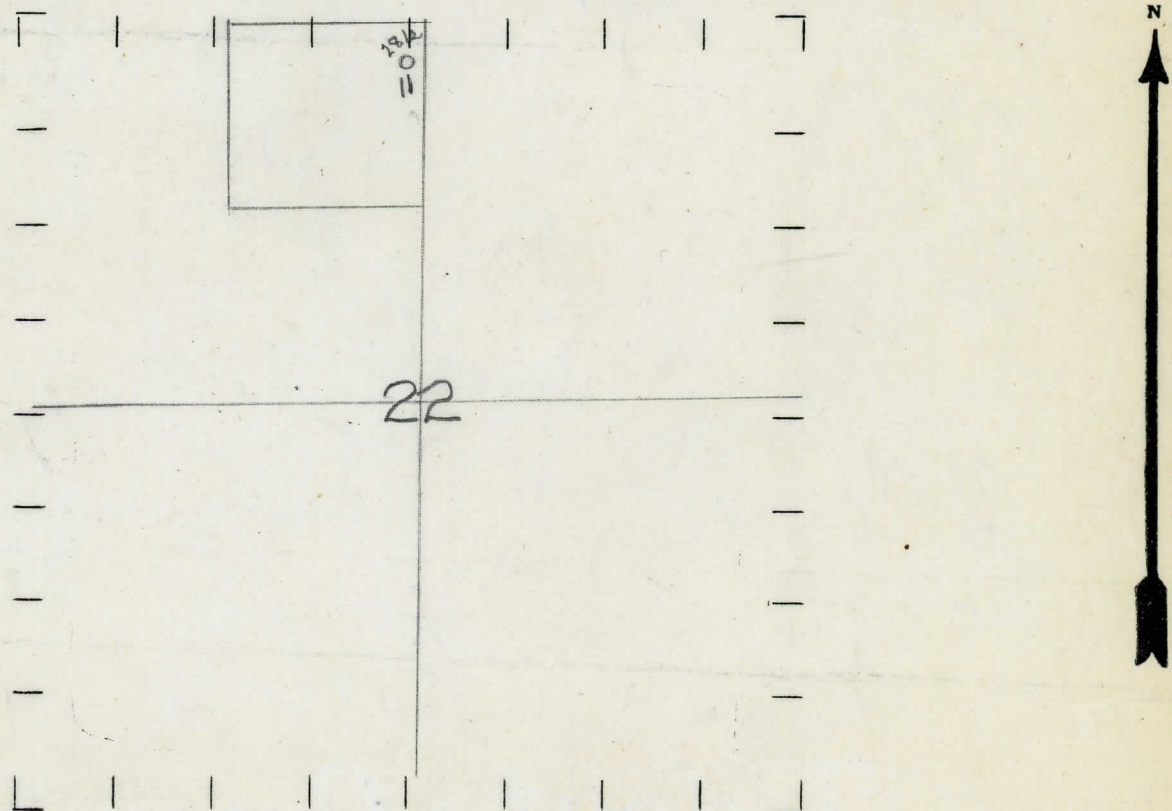
" " South " " "

2466 " " West " " "

LEGEND

- O LOCATION
- ① RIG
- ⊕ DRILLING
- ⊙ GAS WELL
- OIL WELL
- ⬮ SMALL OIL WELL
- ⊖ DRY HOLE
- ⬮ DRY SHOWING OIL
- ⊙ DRY SHOWING GAS
- ⊖ ABANDONED LOCATION
- ⊙ ABANDONED GAS WELL
- ⬮ ABANDONED OIL WELL

NOTE: Below make tracing from map, (when no map is obtainable make sketch) showing farm, center of section, this location with measurements and also wells, dry holes, or other locations in the vicinity of this location. Make copy to keep for reference and send original to Columbus office.



REMARKS:

SIGNED

Superintendent or Foreman.

WELL No. 11 (SERIAL No. 286) FARM Fee ACRES

NAME OF STREAM OR WATERS _____ QUADRANGLE _____

OPERATOR Continental Motors Corp. MAP

LOCATION REPORT SENT IN (DATE) 3/3/29

WELL STARTED (DATE) March 1929. WELL COMPLETED (DATE) May 25th, 1929.

OIL WELL

GAS WELL

DRY HOLE

ABANDONED WELL

**CROSS OUT THREE OF THE ABOVE
WELL RECORD**

DATE OF SHOT _____ NUMBER OF QUARTS _____

1st 24 HOURS PRODUCTION _____ BARRELS OR FEET _____

2nd " " "

3rd " " " " " " " "

4th " " " " " "

5th " " " " " "

SAND AND CASING

[illegible]

REMARKS	No information available.
---------	---------------------------

STATE Michigan COUNTY Muskegon DIST. TWP. Muskegon SEC. 22 TOWN 10 N RANGE 16 W
PREC.

NAME OF STREAM OR WATERS _____ QUADRANGLE _____

LOCATION REPORT SENT IN (DATE) 3/3/29

WELL STARTED (DATE) March 1929. WELL COMPLETED (DATE) June 8th. 1929.

ABANDONED WELL

**CROSS OUT THREE OF THE ABOVE
WELL RECORD**

DATE OF SHOT _____ NUMBER OF QUARTS _____

1st 24 HOURS PRODUCTION 10 bbls. BARRELS OR FEET

2nd " " "

3rd " " " " " "

4th " " " " " " "

5th " " " " " "

SAND AND CASING

[illegible][illegible]

NOTE:—MAKE COPY TO KEEP FOR REFERENCE AND SEND ORIGINAL TO CHICAGO OFFICE. LIST MATERIAL CHARGEABLE TO WELL ON OTHER SIDE.

SIGNED _____ SUPT. OR FOREMAN