



Western Michigan University  
ScholarWorks at WMU

---

Legacy Scout Tickets from Pure Oil Company

---

8-20-2021

## MGRRE\_PureOilScoutTickets\_Continental Motors Corp aka Fee\_12\_21121004250000

MGRRE

*Western Michigan University*

Follow this and additional works at: <https://scholarworks.wmich.edu/pure>



Part of the Geology Commons

---

### WMU ScholarWorks Citation

MGRRE, "MGRRE\_PureOilScoutTickets\_Continental Motors Corp aka Fee\_12\_21121004250000" (2021).  
*Legacy Scout Tickets from Pure Oil Company*. 7157.  
<https://scholarworks.wmich.edu/pure/7157>

This Document is brought to you for free and open access via ScholarWorks at WMU. It has been accepted for inclusion in Legacy Scout Tickets from Pure Oil Company by an authorized administrator of ScholarWorks at WMU. See the National Digital Catalogue - Science Base Catalogue for more collections submitted by MGRRE.



---

**MGRRE\_PureOilScoutTickets\_Continental Motors Corp aka  
Fee\_12\_21121004250000**

API 21121004250000

Permit Number 425

Lease Name Continental Motors Corp aka Fee

Well Number 12

County Muskegon

Township 10N

Range 16W

Section 15

2021 DEQ or Pure co\_name Continental Motors Corporation

Pure Number 294

Latitude 43.25294

Longitude -86.19311

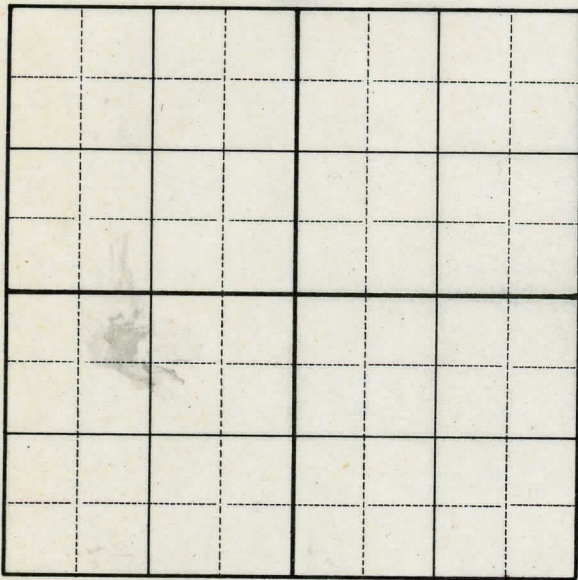
## WELL REPORT - OUTSIDE OPERATIONS

SERIAL NO. 294STATE Michigan ~~P&H~~ CO. MuskegonOPERATOR Continental Motors Corp.FARM Fee WELL NO. Fee-12TWP. ~~SURVEY~~ Muskegon S. 15 T. 10N R. 16WLOC. NW SEWILDCAT ☐ FIELD ☐ FIELD NAME \_\_\_\_\_

MAP NO. \_\_\_\_\_ CO-ORD. \_\_\_\_\_ ELEV. \_\_\_\_\_

STATUS Plugged and abandoned - 7-7-53Total Depth - 1680'

NORTH

DATE 8-26-53 SCOUT JEC

THE PURE OIL COMPANY

LOCATION REPORT

DATE 3-9-29 No. 294  
 STATE Michigan COUNTY MusKegon DIST. MusKegon SEC. 15 TOWN 10N RANGE 16W  
 WELL No. 12 (SERIAL No. 294) FARM Fee 40 ACRES  
 NAME OF STREAM OR WATERS \_\_\_\_\_ QUADRANGLE NW.-SE  
 OPERATOR Continental Motors Corp. MAP MusKegon - 4" = 1 Mile

Feet from North Line of Farm

200 " " East " " "  
 200 " " South " " "  
 200 " " West " " "

Feet from North Line of Section

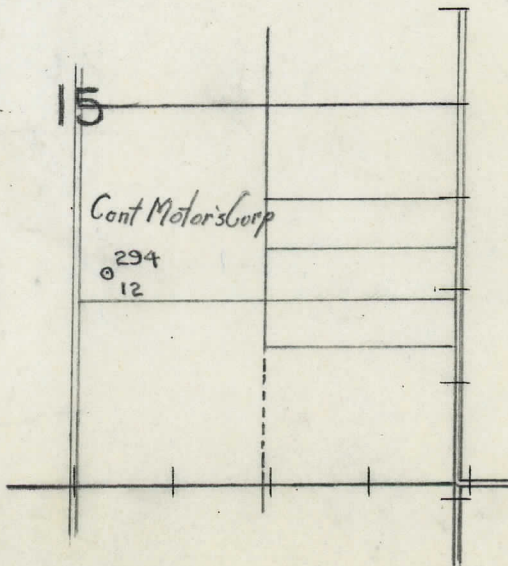
2440 " " East " " "  
 1520 " " South " " "  
 " " West " " "

LEGEND

- |                  |                      |
|------------------|----------------------|
| O LOCATION       | ⊕ DRY HOLE           |
| ① RIG            | ⊕ DRY SHOWING OIL    |
| ⊕ DRILLING       | ⊕ DRY SHOWING GAS    |
| ⊕ GAS WELL       | ⊕ ABANDONED LOCATION |
| ● OIL WELL       | ⊕ ABANDONED GAS WELL |
| ⊕ SMALL OIL WELL | ⊕ ABANDONED OIL WELL |

NOTE: Below make tracing from map, (when no map is obtainable make sketch) showing farm, center of section, this location with measurements and also wells, dry holes, or other locations in the vicinity of this location. Make copy to keep for reference and send original to Columbus office.

Elevation-639  
 Dixie Plane Table



REMARKS:

SIGNED

Superintendent or Foreman.



DATE 3-2-88 LOCATION REPORT No. 524

STATE Michigan COUNTY Muskegon DIST. Muskegon SEC. 15 TOWN 10-N RANGE 16-W

WELL No. 12 (SERIAL No. 294) FARM 7 ll 40 ACRES

NAME OF STREAM OR WATERS QUADRANGLE NW-8E

OPERATOR Continental Motors Corp. MAP Muskegon Co. & Township

Feet from North Line of Farm

200 East 200 South 200 West

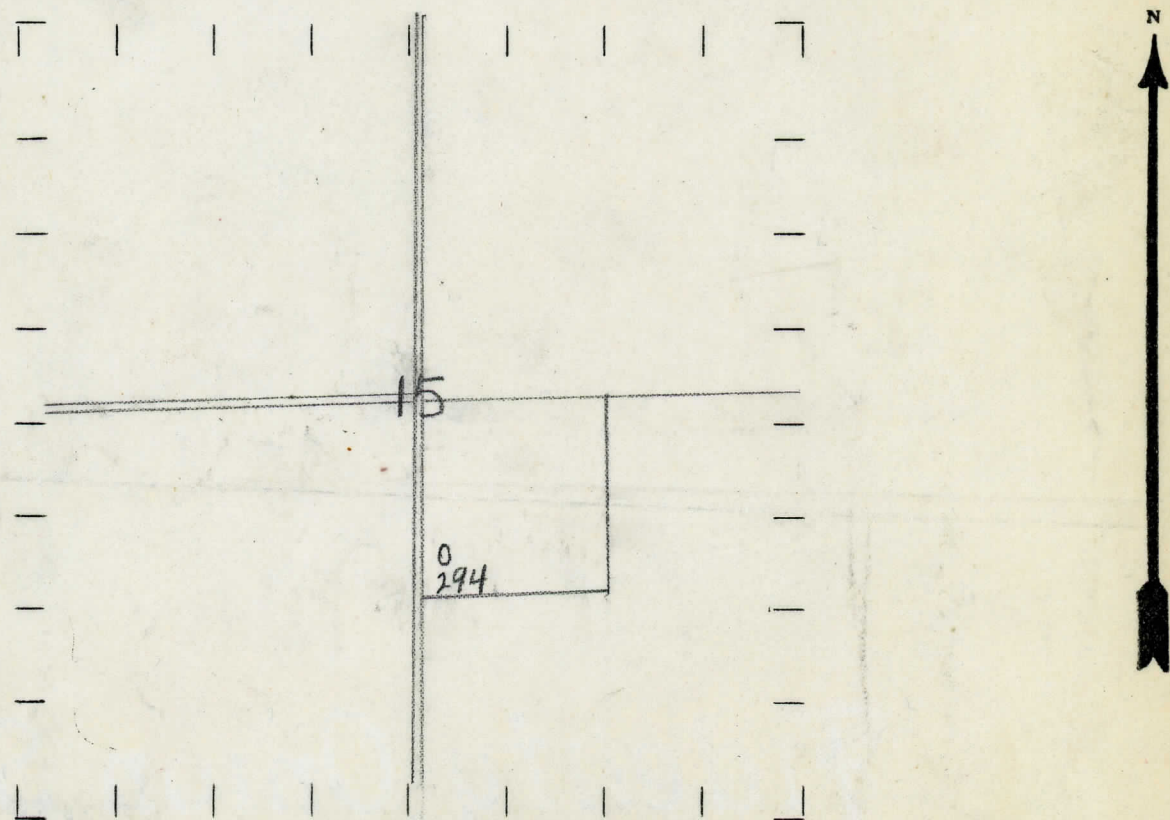
Feet from North Line of Section

2458 East 1508 South

LEGEND

- O LOCATION
- ⊙ RIG
- ⊕ DRILLING
- ⊗ GAS WELL
- OIL WELL
- ⬮ SMALL OIL WELL
- ⊖ DRY HOLE
- ⬮ DRY SHOWING OIL
- ⊗ DRY SHOWING GAS
- ⊖ ABANDONED LOCATION
- ⬮ ABANDONED GAS WELL
- ⬮ ABANDONED OIL WELL

NOTE: Below make tracing from map, (when no map is obtainable make sketch) showing farm, center of section, this location with measurements and also wells, dry holes, or other locations in the vicinity of this location. Make copy to keep for reference and send original to Columbus office.



REMARKS:

SIGNED

Superintendent or Foreman.



## 10

# COMPLETION RECORD

No. 294

DATE April 6th, 1929.

WELL No. 12 (SERIAL No. 294) FARM Ice ACRES

NAME OF STREAM OR WATERS	QUADRANGLE
--------------------------	------------

OPERATOR	Cont. Motors Corp.	MAP		
----------	--------------------	-----	--	--

LOCATION REPORT SENT IN (DATE) March 9th, 1929.

WELL STARTED (DATE) March 1929. WELL COMPLETED (DATE) April 6th. 1929.

## OIL WELL

## **GAS WELL**

# DRY HOLE

## ABANDONED WELL

**CROSS OUT THREE OF THE ABOVE  
WELL RECORD**

DATE OF SHOT \_\_\_\_\_ NUMBER OF QUARTS \_\_\_\_\_

1st 24 HOURS PRODUCTION \_\_\_\_\_ BARRELS OR FEET \_\_\_\_\_

2nd " " "

---

3rd	"	"	"						"	"	"
-----	---	---	---	--	--	--	--	--	---	---	---

4th " " " " " "

5th " " " " " "

## SAND AND CASING

[illegible]

REMARKS	Est. 25 bbls. da. pumping.				
---------	----------------------------	--	--	--	--