



Western Michigan University
ScholarWorks at WMU

Legacy Scout Tickets from Pure Oil Company

8-20-2021

MGRRE_PureOilScoutTickets_Brand_2_21121003970000

MGRRE

Western Michigan University

Follow this and additional works at: <https://scholarworks.wmich.edu/pure>



Part of the Geology Commons

WMU ScholarWorks Citation

MGRRE, "MGRRE_PureOilScoutTickets_Brand_2_21121003970000" (2021). *Legacy Scout Tickets from Pure Oil Company*. 7167.

<https://scholarworks.wmich.edu/pure/7167>

This Document is brought to you for free and open access via ScholarWorks at WMU. It has been accepted for inclusion in Legacy Scout Tickets from Pure Oil Company by an authorized administrator of ScholarWorks at WMU. See the National Digital Catalogue - Science Base Catalogue for more collections submitted by MGRRE.



MGRRE_PureOilScoutTickets_Brand_2_21121003970000

API 21121003970000

Permit Number 397

Lease Name Brand

Well Number 2

County Muskegon

Township 10N

Range 17W

Section 11

2021 DEQ or Pure co_name Grimes, F. S.

Pure Number 304

Latitude 43.26625

Longitude -86.28359

Corrected Location Report

THE PURE OIL COMPANY

DATE 4-20-29

LOCATION REPORT

No. 304

STATE Michigan COUNTY Muskegon DIST. Laketon SEC. 11 TOWN 10N RANGE 17E

WELL No. 2 (SERIAL No. 304) FARM Geo Brand ACRES

NAME OF STREAM OR WATERS QUADRANGLE SE 1/4 SE 1/4

OPERATOR Betty Jane Oil Co. MAP Laketon Twp. 4" = 1 Mile

330 Feet from North Line of Farm

330 " " East " " "

" " South " " "

" " West " " "

Feet from North Line of Section

330 " " East " " "

990 " " South " " "

" " West " " "

LEGEND

O LOCATION

① RIG

⊕ DRILLING

⊗ GAS WELL

● OIL WELL

⬮ SMALL OIL WELL

⊕ DRY HOLE

⬮ DRY SHOWING OIL

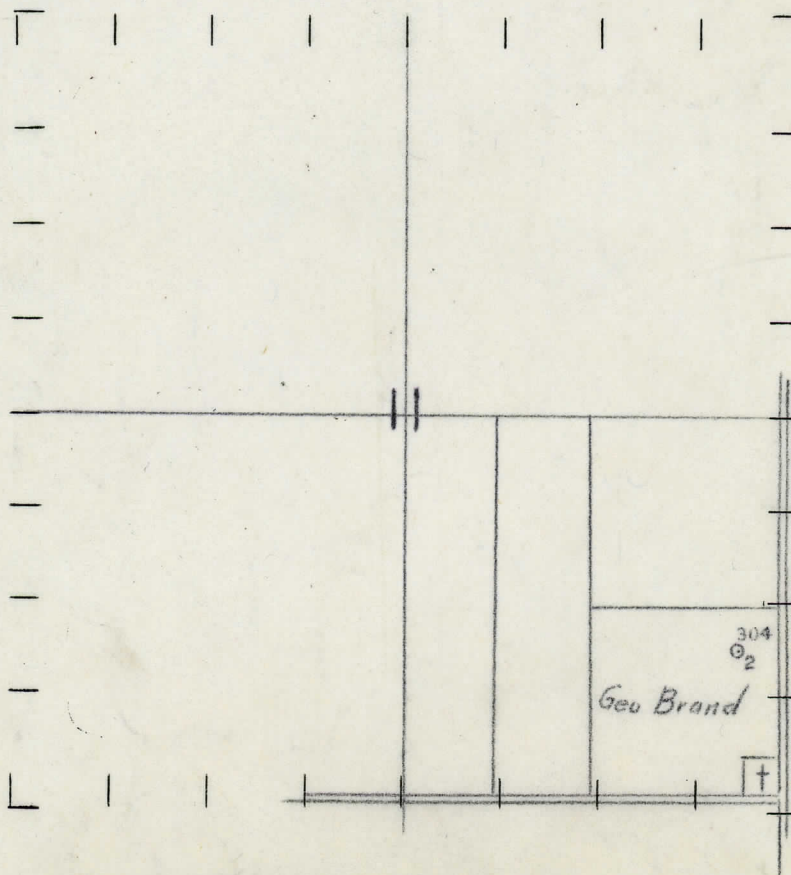
⊗ DRY SHOWING GAS

⊗ ABANDONED LOCATION

⬮ ABANDONED GAS WELL

⬮ ABANDONED OIL WELL

NOTE: Below make tracing from map, (when no map is obtainable make sketch) showing farm, center of section, this location with measurements and also wells, dry holes, or other locations in the vicinity of this location. Make copy to keep for reference and send original to Columbus office.



REMARKS:

SIGNED

Superintendent or Foreman.

STATE Mich COUNTY Muskegon DIST. Laketon SEC. 11 TOWN 10N RANGE 17W
 WELL No. 2 (SERIAL No. 304) FARM Geo Brand ACRES

NAME OF STREAM OR WATERS. QUADRANGLE SE-SE

OPERATOR Betty Jane O.I Co MAP Muskegon Co. Laketon Twp

330 Feet from North Line of Farm

330 " " East " " "

" " South " " "

" " West " " "

Feet from North Line of Section

" " East " " "

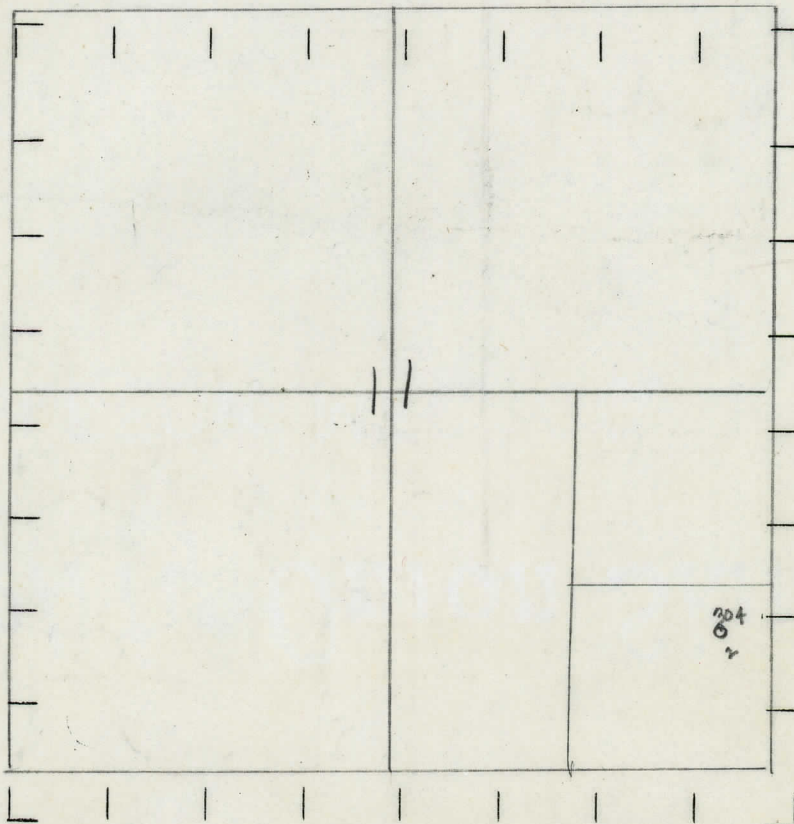
" " South " " "

" " West " " "

LEGEND

- | | |
|------------------|----------------------|
| ○ LOCATION | ⊗ DRY HOLE |
| ① RIG | ⊕ DRY SHOWING OIL |
| ⊕ DRILLING | ⊗ DRY SHOWING GAS |
| ⊗ GAS WELL | ⊗ ABANDONED LOCATION |
| ● OIL WELL | ⊗ ABANDONED GAS WELL |
| ⊕ SMALL OIL WELL | ⊗ ABANDONED OIL WELL |

NOTE: Below make tracing from map, (when no map is obtainable make sketch) showing farm, center of section, this location with measurements and also wells, dry holes, or other locations in the vicinity of this location. Make copy to keep for reference and send original to Columbus office.



REMARKS:

Corrected Location

SIGNED

GA Bell

Superintendent or Foreman.

NAME OF SURVEYOR OR PARTY
WELL No. 5 (SERIAL No. 304) FARM Geo. Brand
STATE Wisc. COUNTY Muskegon DIST. Laketon SEC. 11 TOWN 10N RANGE 13W
BREC. LAB. DIST. LAKETON SEC. 11 TOWN 10N RANGE 13W

STATE Michigan COUNTY Muskegon DIST. Laketon SEC. 11 TOWN 10N RANGE 13W
WELL No. 1 (SERIAL No. 304) FARM Geo. Brand ACRES

NAME OF STREAM OR WATERS QUADRANGLE SE SE

OPERATOR Betty Jane Oil Co. MAP Laketon - 4" = 1 mi

Feet from North Line of Farm

300 " " East " " "

600 " " South " " "

" " West " " "

Feet from North Line of Section

300 " " East " " "

600 " " South " " "

" " West " " "

LEGEND

○ LOCATION

① RIG

⊕ DRILLING

⊗ GAS WELL

● OIL WELL

⬮ SMALL OIL WELL

⊗ DRY HOLE

⬮ DRY SHOWING OIL

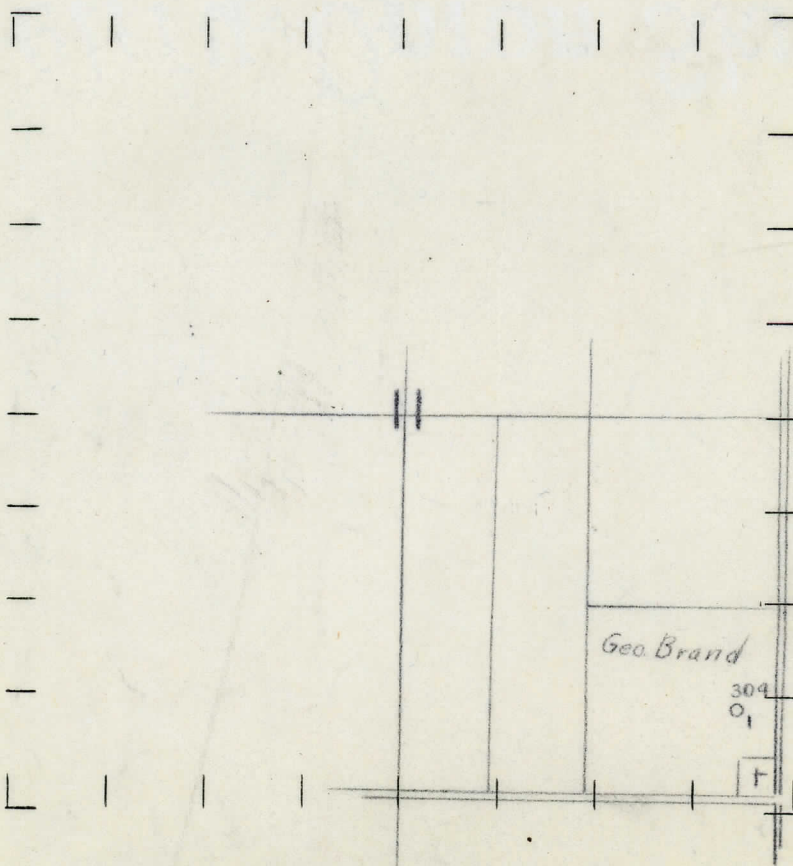
⊗ DRY SHOWING GAS

⊗ ABANDONED LOCATION

⬮ ABANDONED GAS WELL

⬮ ABANDONED OIL WELL

NOTE: Below make tracing from map, (when no map is obtainable make sketch) showing farm, center of section, this location with measurements and also wells, dry holes, or other locations in the vicinity of this location. Make copy to keep for reference and send original to Columbus office.



REMARKS:

SIGNED

Superintendent or Foreman.

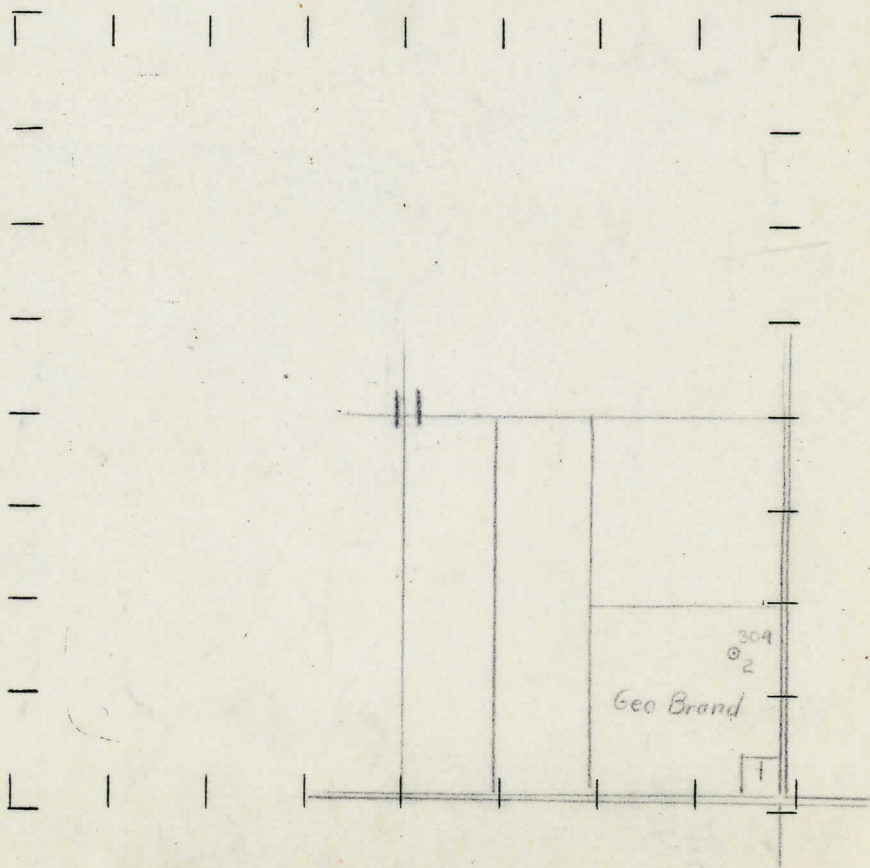
STATE Michigan COUNTY Muskegon DIST. Laketon SEC. 11 TOWN 10N RANGE 17W
 WELL No. 1 (SERIAL No. 304) FARM George Brand ACRES
 NAME OF STREAM OR WATERS QUADRANGLE SE-SE
 OPERATOR Betty Lane Oil Co. MAP Laketon 4" = 1 Mile

330 Feet from North Line of Farm
330 " " East " " "
 " " South " " "
 " " West " " "
330 Feet from North Line of Section
990 " " East " " "
 " " South " " "
 " " West " " "

LEGEND

- | | |
|------------------|----------------------|
| ○ LOCATION | ⊗ DRY HOLE |
| ① RIG | ⬮ DRY SHOWING OIL |
| ⊕ DRILLING | ⊗ DRY SHOWING GAS |
| ⊙ GAS WELL | ⊗ ABANDONED LOCATION |
| ● OIL WELL | ⊙ ABANDONED GAS WELL |
| ⬮ SMALL OIL WELL | ⬮ ABANDONED OIL WELL |

NOTE: Below make tracing from map, (when no map is obtainable make sketch) showing farm, center of section, this location with measurements and also wells, dry holes, or other locations in the vicinity of this location. Make copy to keep for reference and send original to Columbus office.



REMARKS:

SIGNED

Superintendent or Foreman.

STATE MICHIGAN COUNTY MUSKEGON DIST. TWP. LAKETON. SEC 11 TOWN 10-N RANGE 17-W.
PREC.

WELL No. 2 (SERIAL No. 304) FARM GEORGE BRAND. ACRES

NAME OF STREAM OR WATERS QUADRANGLE SE SE

OPERATOR BETTY JANE OIL COMPANY. MAP MUSKEGON CO. & LAKETON TWP.

330 Feet from North Line of Farm

330 " " East " " "

" " South " " "

" " West " " "

Feet from North Line of Section

330 " " East " " "

990 " " South " " "

" " West " " "

LEGEND

O LOCATION

① RIG

⊕ DRILLING

⊗ GAS WELL

● OIL WELL

⬮ SMALL OIL WELL

⊕ DRY HOLE

⬮ DRY SHOWING OIL

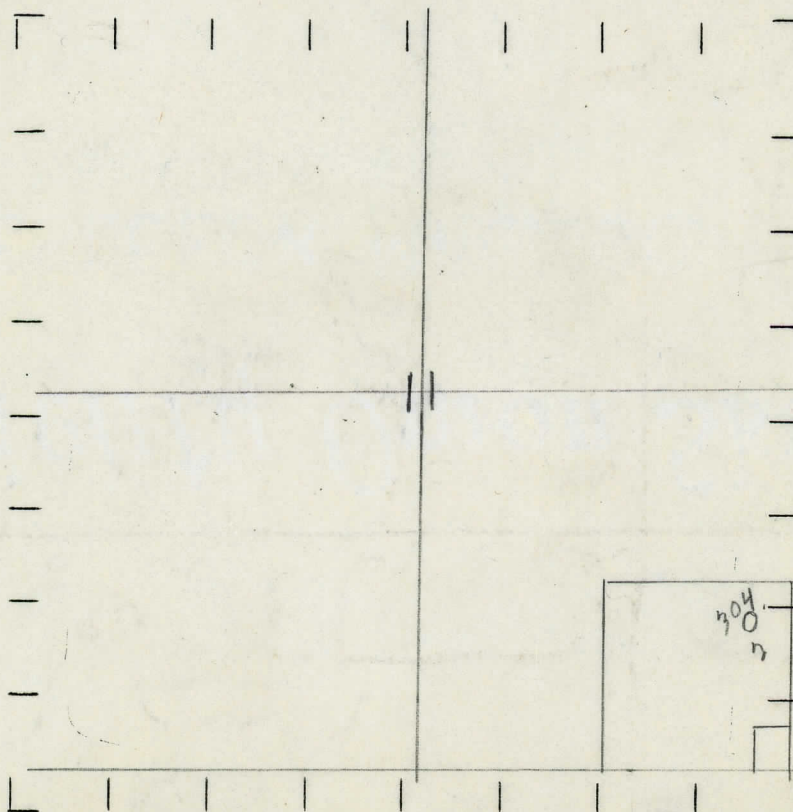
⊗ DRY SHOWING GAS

⊕ ABANDONED LOCATION

⊗ ABANDONED GAS WELL

⬮ ABANDONED OIL WELL

NOTE: Below make tracing from map, (when no map is obtainable make sketch) showing farm, center of section, this location with measurements and also wells, dry holes, or other locations in the vicinity of this location. Make copy to keep for reference and send original to Columbus office.



REMARKS:

SIGNED

Superintendent or Foreman.

SIGNED _____ SUPT. OR FOREMAN