



Western Michigan University  
ScholarWorks at WMU

---

Legacy Scout Tickets from Pure Oil Company

---

8-20-2021

## MGRRE\_PureOilScoutTickets\_Creach aka Crach\_1\_unk

MGRRE

*Western Michigan University*

Follow this and additional works at: <https://scholarworks.wmich.edu/pure>



Part of the Geology Commons

---

### WMU ScholarWorks Citation

MGRRE, "MGRRE\_PureOilScoutTickets\_Creach aka Crach\_1\_unk" (2021). *Legacy Scout Tickets from Pure Oil Company*. 7173.

<https://scholarworks.wmich.edu/pure/7173>

This Document is brought to you for free and open access via ScholarWorks at WMU. It has been accepted for inclusion in Legacy Scout Tickets from Pure Oil Company by an authorized administrator of ScholarWorks at WMU. See the National Digital Catalogue - Science Base Catalogue for more collections submitted by MGRRE.



---

## MGRRE\_PureOilScoutTickets\_Creach aka Crach\_1\_unk

API unk

Permit Number unk

Lease Name Creach aka Crach

Well Number 1

County Muskegon

Township 10N

Range 17W

Section 12

2021 DEQ or Pure co\_name Majestic Oil

Pure Number 310

Latitude 43.2707331

Longitude -86.2720544

## THE PURE OIL COMPANY

## LOCATION REPORT

DATE 3-22-29No. 310STATE Michigan COUNTY Muskegon DIST. Laketon SEC. 12 TOWN 10N RANGE 17W  
TWP. PREC.WELL No. 1 (SERIAL No. 310) FARM Creach ACRESNAME OF STREAM OR WATERS QUADRANGLE NE-SEOPERATOR Majestic Oil Co. MAP Laketon - 4" = 1 Mile67 Feet from North Line of Farm131 " " East " " "

" " South " " "

" " West " " "

2557 Feet from North Line of Section131 " " East " " "2100 " " South " " "

" " West " " "

## LEGEND

O LOCATION

① RIG

⊕ DRILLING

⊗ GAS WELL

● OIL WELL

⬮ SMALL OIL WELL

⊗ DRY HOLE

⬮ DRY SHOWING OIL

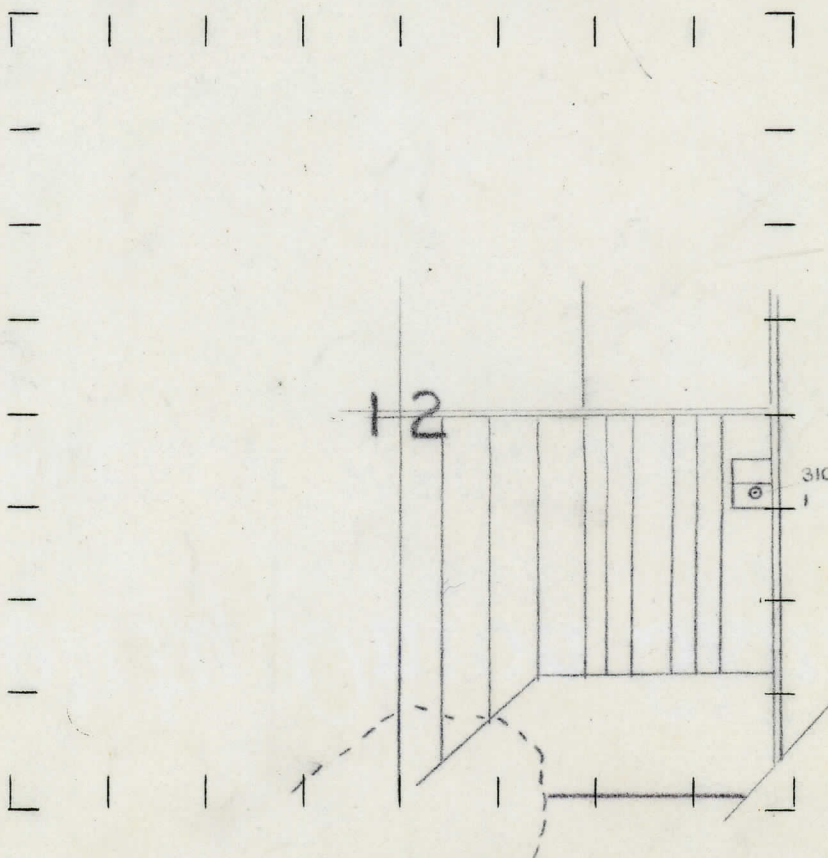
⊗ DRY SHOWING GAS

⊗ ABANDONED LOCATION

⊗ ABANDONED GAS WELL

⬮ ABANDONED OIL WELL

NOTE: Below make tracing from map, (when no map is obtainable make sketch) showing farm, center of section, this location with measurements and also wells, dry holes, or other locations in the vicinity of this location. Make copy to keep for reference and send original to Columbus office.



REMARKS:

SIGNED

Superintendent or Foreman.

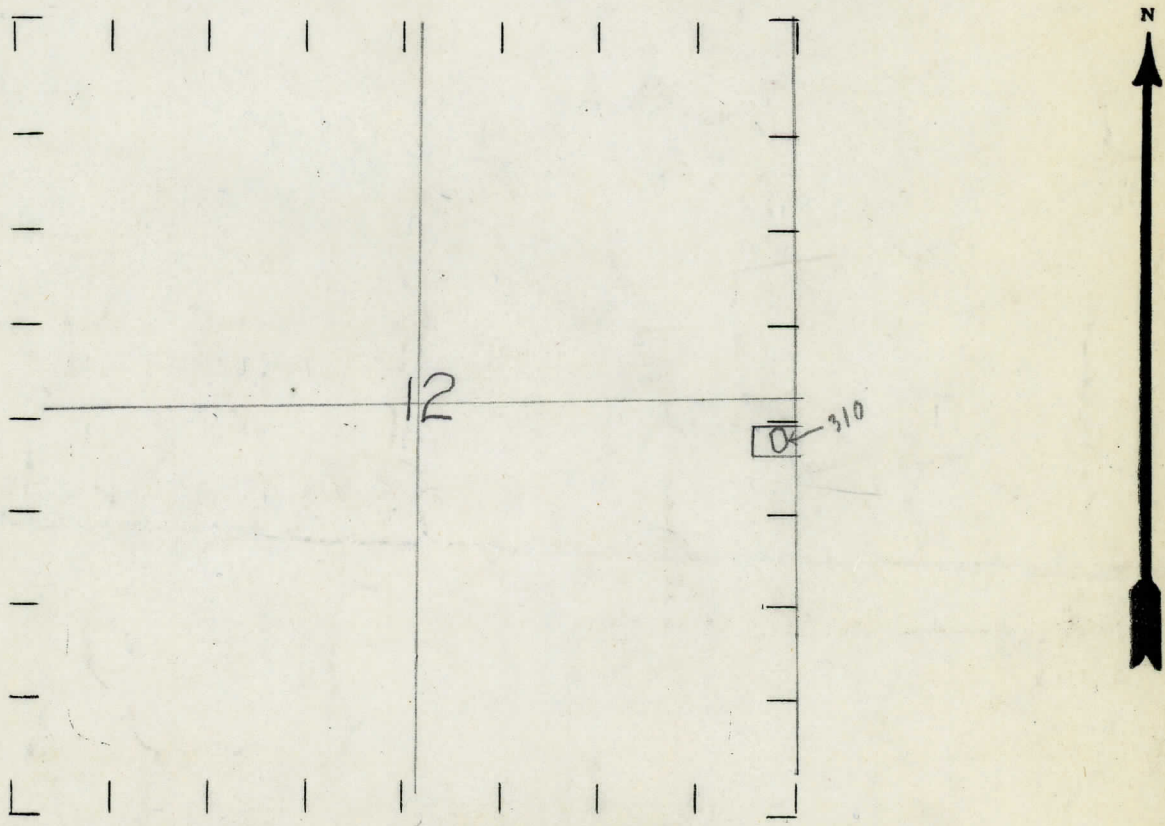


STATE MICHIGAN COUNTY MUSKEGON DIST. LAKETON SEC. 12 TOWN 10-N RANGE 17-W.  
WELL No. 1 (SERIAL No. 310) FARM CREACH ACRES \_\_\_\_\_  
NAME OF STREAM OR WATERS \_\_\_\_\_ QUADRANGLE NE SE  
OPERATOR MAJESTIC OIL COMPANY. MAP MUSKEGON CO. & LAKETON TWP.

67 Feet from North Line of Farm  
131 " " East " " "  
" " South " " "  
" " West " " "  
2857 Feet from North Line of Section  
131 " " East " " "  
" " South " " "  
" " West " " "

- LEGEND**
- |                  |                      |
|------------------|----------------------|
| ○ LOCATION       | ⊕ DRY HOLE           |
| ① RIG            | ⬮ DRY SHOWING OIL    |
| ⊕ DRILLING       | ⊕ DRY SHOWING GAS    |
| ⊗ GAS WELL       | ⊗ ABANDONED LOCATION |
| ● OIL WELL       | ⊗ ABANDONED GAS WELL |
| ⬮ SMALL OIL WELL | ⬮ ABANDONED OIL WELL |

NOTE: Below make tracing from map, (when no map is obtainable make sketch) showing farm, center of section, this location with measurements and also wells, dry holes, or other locations in the vicinity of this location. Make copy to keep for reference and send original to Columbus office.



REMARKS: \_\_\_\_\_  
\_\_\_\_\_  
\_\_\_\_\_

SIGNED \_\_\_\_\_  
Superintendent or Foreman.



DATE May 4th, 1929. Michigan Producing DIVISION **COMPLETION RECORD** No. 510

WELL No. 1 (SERIAL No. 310) FARM Creech ACRES

NAME OF STREAM OR WATERS \_\_\_\_\_ QUADRANGLE \_\_\_\_\_

OPERATOR Majestic Oil Co. MAP

LOCATION REPORT SENT IN (DATE) 3/22/29

WELL STARTED (DATE) March 1929. WELL COMPLETED (DATE) May 4th, 1929.

## OIL WELL

## GAS WELL

## DRY HOLE

## ABANDONED WELL

**CROSS OUT THREE OF THE ABOVE  
WELL RECORD**

DATE OF SHOT \_\_\_\_\_ NUMBER OF QUARTS \_\_\_\_\_

1st 24 HOURS PRODUCTION Est. 500 BARRELS OR FEET[illegible]

3rd " " " " " " " "

4th " " " " " " " "

5th " " " " " "

## SAND AND CASING

[illegible]

REMARKS

SIGNED \_\_\_\_\_ SUPT. OR FOREMAN