



Western Michigan University
ScholarWorks at WMU

Legacy Scout Tickets from Pure Oil Company

8-20-2021

MGRRE_PureOilScoutTickets_Bear Lake Fox Farm_2_unk

MGRRE

Western Michigan University

Follow this and additional works at: <https://scholarworks.wmich.edu/pure>



Part of the Geology Commons

WMU ScholarWorks Citation

MGRRE, "MGRRE_PureOilScoutTickets_Bear Lake Fox Farm_2_unk" (2021). *Legacy Scout Tickets from Pure Oil Company*. 7179.

<https://scholarworks.wmich.edu/pure/7179>

This Document is brought to you for free and open access via ScholarWorks at WMU. It has been accepted for inclusion in Legacy Scout Tickets from Pure Oil Company by an authorized administrator of ScholarWorks at WMU. See the National Digital Catalogue - Science Base Catalogue for more collections submitted by MGRRE.



MGRRE_PureOilScoutTickets_Bear Lake Fox Farm_2_unk

API unk

Permit Number unk

Lease Name Bear Lake Fox Farm

Well Number 2

County Muskegon

Township 10N

Range 17W

Section 12

2021 DEQ or Pure co_name East Ohio Gas Co

Pure Number 316

Latitude 43.2707331

Longitude -86.2720544

THE PURE OIL COMPANY

LOCATION REPORT

No.

316

DATE March 23^d 1929STATE Michigan COUNTY Muskegon DIST. Laketon SEC. 12 TOWN 10 N RANGE 17 W
PREC.WELL No. 2 (SERIAL No. 316) FARM Bear Lake Fox Farm ACRES

NAME OF STREAM OR WATERS QUADRANGLE

OPERATOR East Ohio Gas Co MAP Laketon Twp1287 Feet from North Line of Farm173 " " East " " "

" " South " " "

" " West " " "

3927 Feet from North Line of Section2190 " " East " " "

" " South " " "

" " West " " "

LEGEND

O LOCATION

① RIG

⊕ DRILLING

⊙ GAS WELL

● OIL WELL

⬮ SMALL OIL WELL

⊙ DRY HOLE

⬮ DRY SHOWING OIL

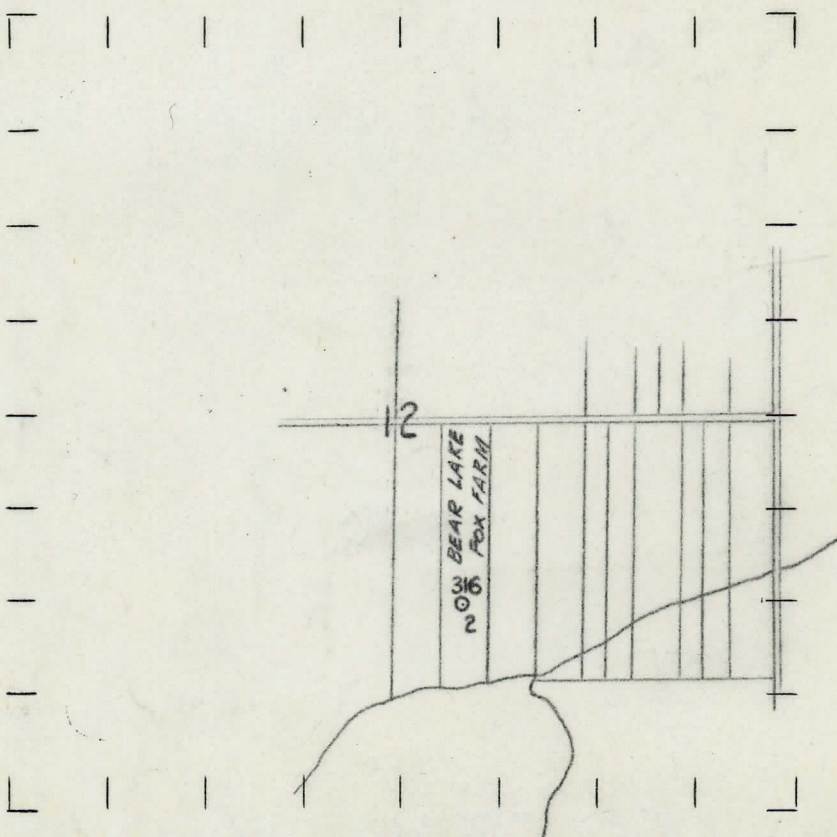
⊙ DRY SHOWING GAS

⊙ ABANDONED LOCATION

⬮ ABANDONED GAS WELL

⬮ ABANDONED OIL WELL

NOTE: Below make tracing from map, (when no map is obtainable make sketch) showing farm, center of section, this location with measurements and also wells, dry holes, or other locations in the vicinity of this location. Make copy to keep for reference and send original to Columbus office.



REMARKS:

SIGNED

Superintendent or Foreman.

STATE MICHIGAN COUNTY MUSKEGON DIST. LAKETON SEC. 12 TOWN 10-N RANGE 17-W
WELL No. 2 (SERIAL No. 316) FARM BLACK LAKE FOX RANCH ACRES
NAME OF STREAM OR WATERS QUADRANGLE SW SE
OPERATOR EAST OHIO GAS CO. MAP MUSKEGON CO. & LAKETON TWP.

1287 Feet from North Line of Farm
173 " " East " " "
" " South " " "
" " West " " "
3927 Feet from North Line of Section
2190 " " East " " "
" " South " " "
" " West " " "

- LEGEND
- O LOCATION

① RIG

⊕ DRILLING

⊙ GAS WELL

● OIL WELL

⬮ SMALL OIL WELL

⊙ DRY HOLE

⬮ DRY SHOWING OIL

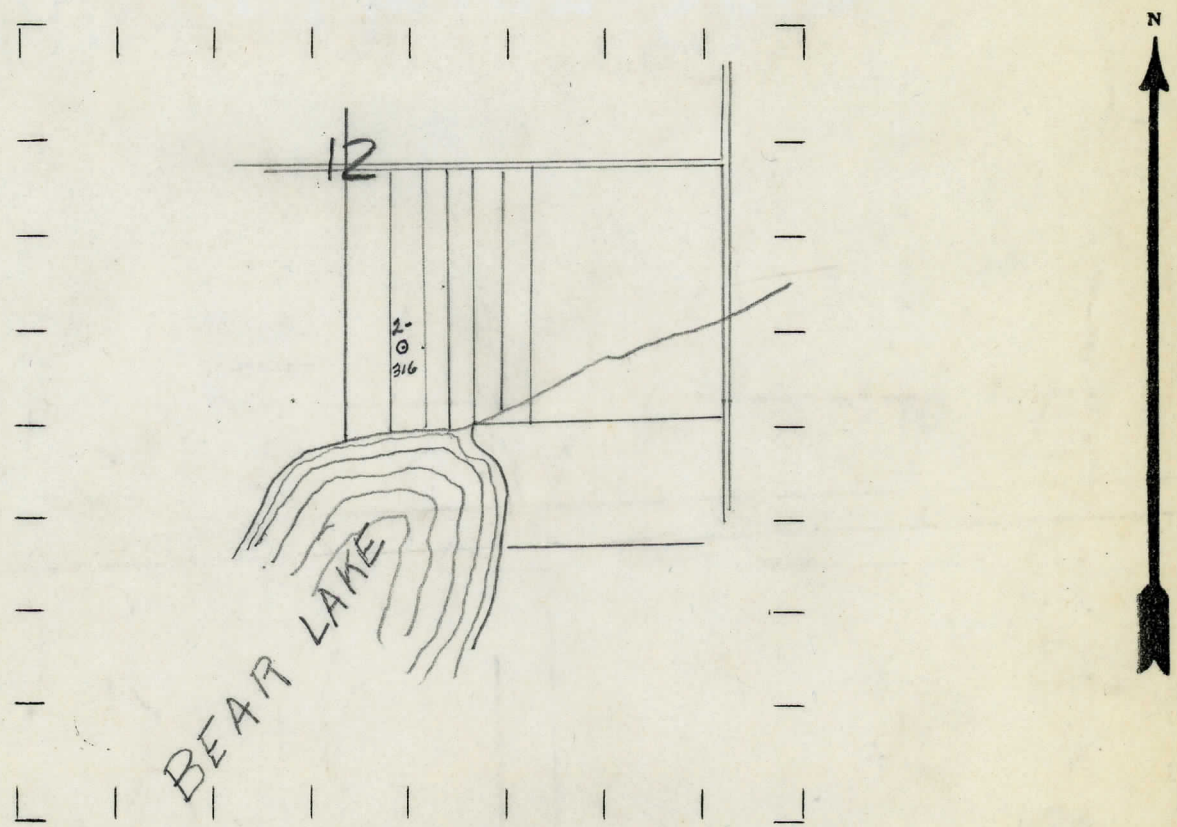
⊙ DRY SHOWING GAS

⊙ ABANDONED LOCATION

⊙ ABANDONED GAS WELL

⬮ ABANDONED OIL WELL

NOTE: Below make tracing from map, (when no map is obtainable make sketch) showing farm, center of section, this location with measurements and also wells, dry holes, or other locations in the vicinity of this location. Make copy to keep for reference and send original to Columbus office.



REMARKS:

SIGNED

Superintendent or Foreman.

DATE June 8th, 1929.

No. -316-

WELL No. 2 (SERIAL No. 316) FARM Bear Lake Fox Farm ACRES

NAME OF STREAM OR WATERS _____ QUADRANGLE _____

OPERATOR East Ohio Gas Company MAP Muskegon Co., Laketon Twp.,

LOCATION REPORT SENT IN (DATE) 3/23/29

WELL STARTED (DATE) March 1929. WELL COMPLETED (DATE) June 8th, 1929.

OIL WELL

GAS WELL

DRY HOLE

ABANDONED WELL

CROSS OUT THREE OF THE ABOVE

WELL RECORD

DATE OF SHOT _____ NUMBER OF QUARTS _____

1st 24 HOURS PRODUCTION	750 bbls.	BARRELS OR FEET
-------------------------	-----------	-----------------

2nd " " " " " " " "

3rd " " " " " "

[illegible]

5th " " " " " " " "

SAND AND CASING

[illegible]

REMARKS

NOTE:—MAKE COPY TO KEEP FOR REFERENCE AND SEND ORIGINAL TO CHICAGO OFFICE. LIST MATERIAL CHARGEABLE TO WELL ON OTHER SIDE.

SIGNED

SUPT. OR FOREMAN