



Western Michigan University  
ScholarWorks at WMU

---

Legacy Scout Tickets from Pure Oil Company

---

8-20-2021

**MGRRE\_PureOilScoutTickets\_Clowar, C.\_1\_21121004500000**

MGRRE

*Western Michigan University*

Follow this and additional works at: <https://scholarworks.wmich.edu/pure>



Part of the Geology Commons

---

#### WMU ScholarWorks Citation

MGRRE, "MGRRE\_PureOilScoutTickets\_Clowar, C.\_1\_21121004500000" (2021). *Legacy Scout Tickets from Pure Oil Company*. 7185.

<https://scholarworks.wmich.edu/pure/7185>

This Document is brought to you for free and open access via ScholarWorks at WMU. It has been accepted for inclusion in Legacy Scout Tickets from Pure Oil Company by an authorized administrator of ScholarWorks at WMU. See the National Digital Catalogue - Science Base Catalogue for more collections submitted by MGRRE.



---

**MGRRE\_PureOilScoutTickets\_Clowar, C.\_1\_21121004500000**

API 21121004500000

Permit Number 450

Lease Name Clowar, C.

Well Number 1

County Muskegon

Township 10N

Range 17W

Section 13

2021 DEQ or Pure co\_name Nelson and Witt, Incorporated

Pure Number 322

Latitude 43.26312

Longitude -86.28177

CORRECTED FARM NAME  
REPORT

THE PURE OIL COMPANY

## LOCATION REPORT

No. 322

DATE 4-10-29

STATE Michigan COUNTY Muskegon DIST. Laketown SEC. 13 TOWN 10N RANGE 17W  
WELL No. 1 (SERIAL No. 322) FARM C. Cloniar ACRES  
NAME OF STREAM OR WATERS Bear Lake QUADRANGLE NW 1/4 NW 1/4  
OPERATOR Witter & Nelson MAP Musk Co - Laketown - 4" = 1 mi

100 Feet from North Line of Farm

100 " " East " " "

100 " " South " " "

100 " " West " " "

100 Feet from North Line of Section

100 " " East " " "

100 " " South " " "

100 " " West " " "

## LEGEND

O LOCATION

① RIG

⊕ DRILLING

⊙ GAS WELL

● OIL WELL

⊙ SMALL OIL WELL

⊙ DRY HOLE

⊙ DRY SHOWING OIL

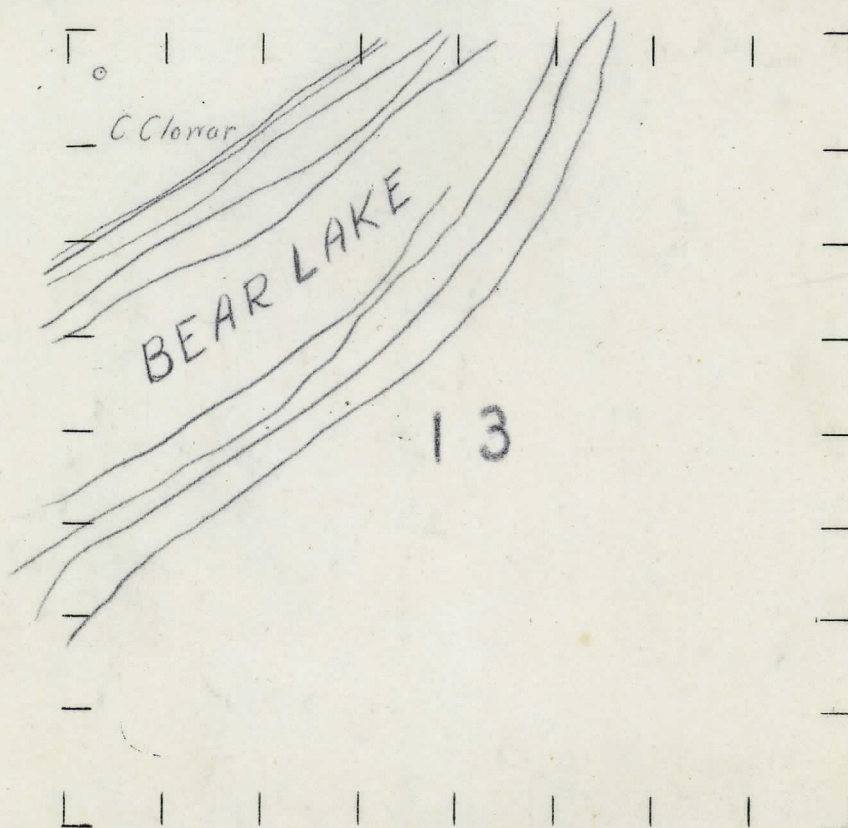
⊙ DRY SHOWING GAS

⊙ ABANDONED LOCATION

⊙ ABANDONED GAS WELL

⊙ ABANDONED OIL WELL

NOTE: Below make tracing from map, (when no map is obtainable make sketch) showing farm, center of section, this location with measurements and also wells, dry holes, or other locations in the vicinity of this location. Make copy to keep for reference and send original to Columbus office.



## REMARKS:

This Plat is to correct the farm name and operator sent in as J. J. Fagan - N. Burns #1

SIGNED

Superintendent or Foreman.



DATE

LOCATION REPORT

No.

DATE 4/7/29

THE FINE OIL COMPANY

LOCATION REPORT

No.

STATE Mich COUNTY Muskegon DIST. Laketon SEC. 13 TOWN 10 N RANGE 17W  
 WELL No. 1 (SERIAL No. 322) FARM G. Clowar ACRES

NAME OF STREAM OR WATERS QUADRANGLE NW NW

OPERATOR Witt And Nelson MAP Muskegon Co Laketon Twp.

100 Feet from North Line of Farm

" " East " " "

" " South " " "

100 " " West " " "

100 Feet from North Line of Section

" " East " " "

" " South " " "

100 " " West " " "

## LEGEND

O LOCATION

① RIG

⊕ DRILLING

⊗ GAS WELL

● OIL WELL

⬮ SMALL OIL WELL

⊖ DRY HOLE

⬮ DRY SHOWING OIL

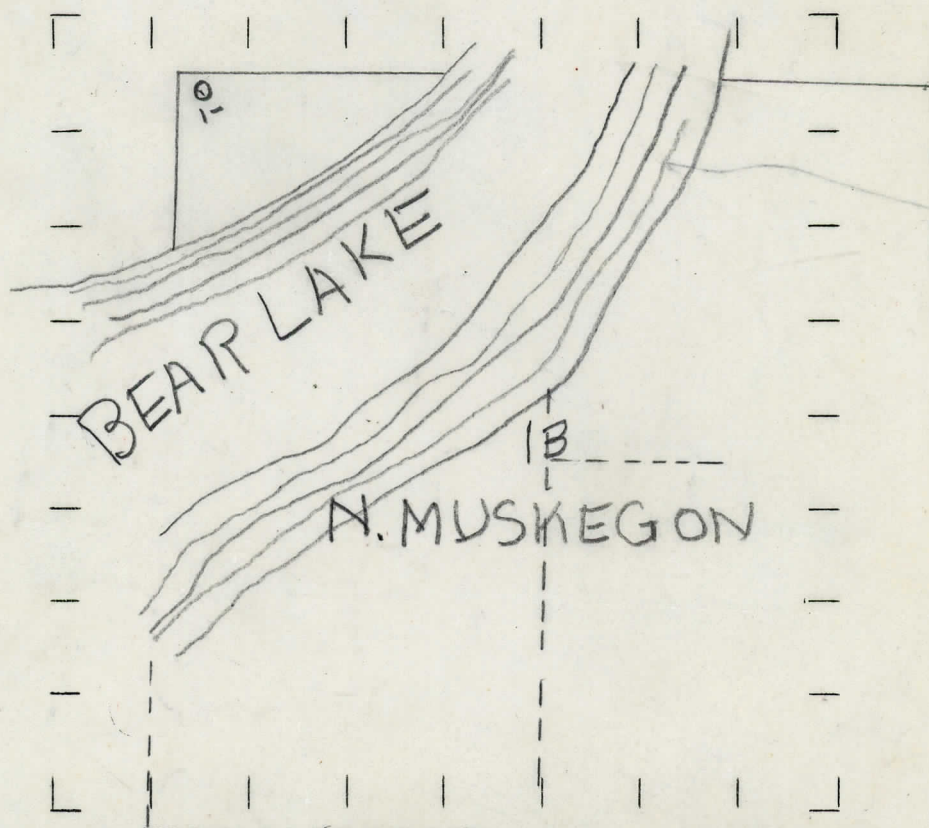
⊖ DRY SHOWING GAS

⊗ ABANDONED LOCATION

⬮ ABANDONED GAS WELL

⬮ ABANDONED OIL WELL

NOTE: Below make tracing from map, (when no map is obtainable make sketch) showing farm, center of section, this location with measurements and also wells, dry holes, or other locations in the vicinity of this location. Make copy to keep for reference and send original to Columbus office.



## REMARKS:

This plat is to correct the farm name and operator on # 322 sent in as J. J. Fagans' N. Burns # 1

SIGNED

*G. H. Bell*

Superintendent or Foreman.

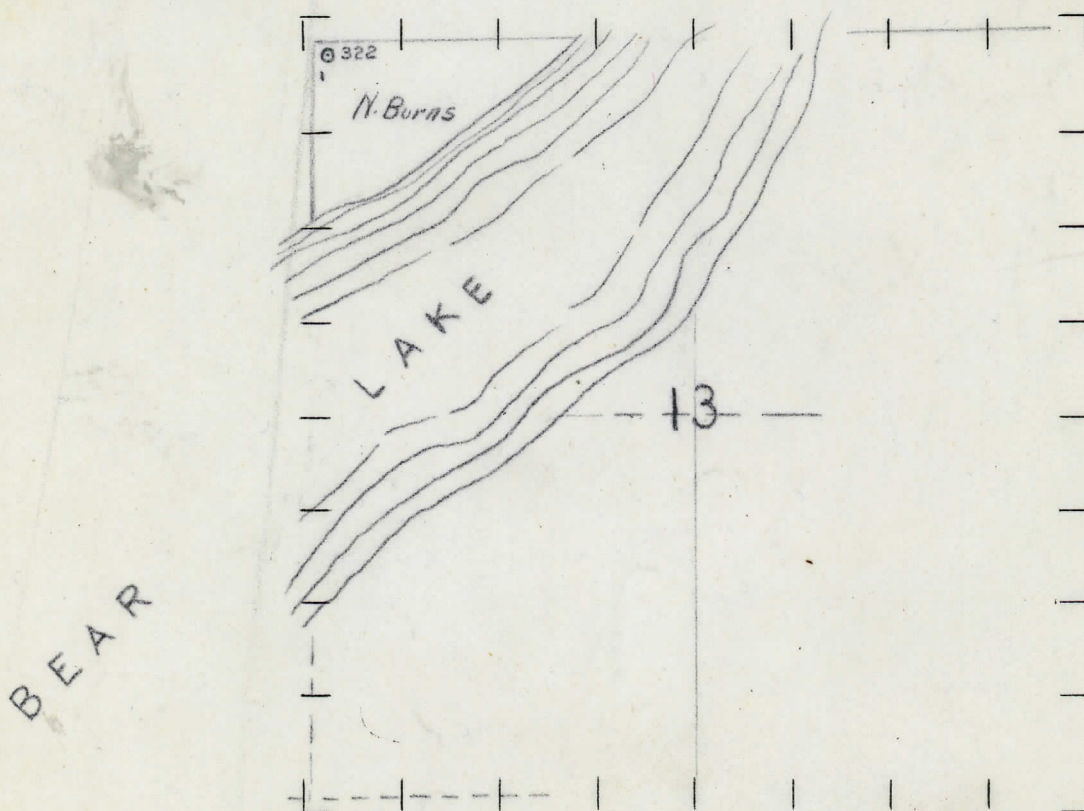


STATE Michigan COUNTY Muskegon DIST. Laketon SEC. 13 TOWN 10N RANGE 17W  
 DATE 4-3-29 LOCATION REPORT No. 322  
 WELL No. 1 (SERIAL No. 322) FARM N. Burns ACRES  
 NAME OF STREAM OR WATERS Bear Lake QUADRANGLE NW 1/4 NW 1/4  
 OPERATOR J. J. Fagan et al MAP Laketon-4-1 m  
100 Feet from North Line of Farm  
 " " East " " "  
 " " South " " "  
100 " " West " " "  
100 Feet from North Line of Section  
 " " East " " "  
 " " South " " "  
100 " " West " " "

**LEGEND**

○ LOCATION	⊕ DRY HOLE
① RIG	⊕ DRY SHOWING OIL
⊕ DRILLING	⊕ DRY SHOWING GAS
⊕ GAS WELL	⊕ ABANDONED LOCATION
● OIL WELL	⊕ ABANDONED GAS WELL
⊕ SMALL OIL WELL	⊕ ABANDONED OIL WELL

NOTE: Below make tracing from map, (when no map is obtainable make sketch) showing farm, center of section, this location with measurements and also wells, dry holes, or other locations in the vicinity of this location. Make copy to keep for reference and send original to Columbus office.



REMARKS:

SIGNED

Superintendent or Foreman.

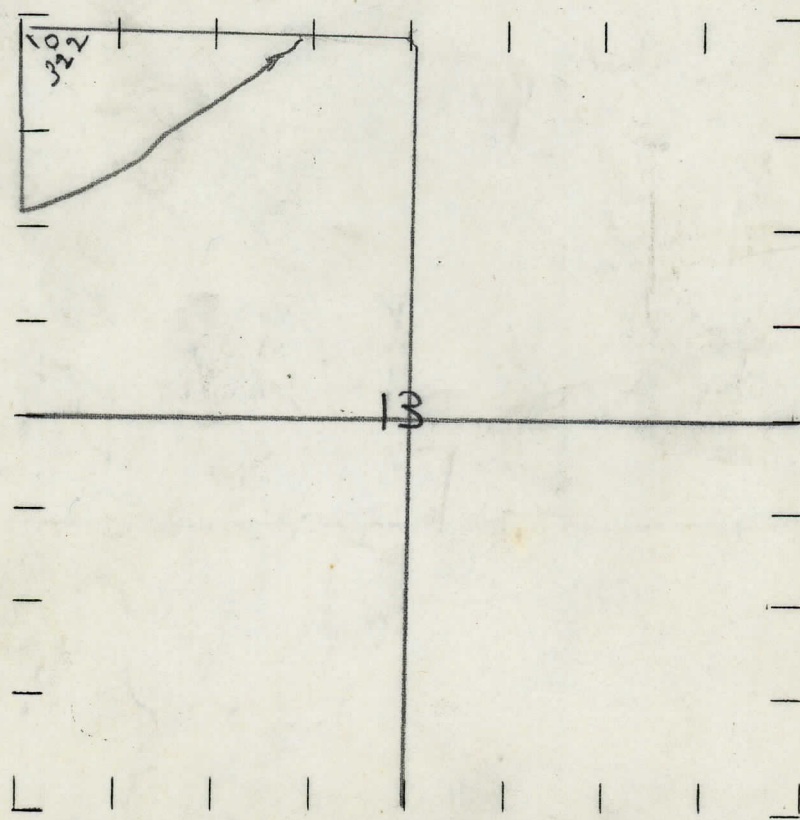


STATE MICHIGAN COUNTY MUSKEGON DIST. TWP. LAKETON SEC. 13 TOWN 10-N. RANGE 17-W.  
WELL No. 1 (SERIAL No. 322) FARM N. BURNS. ACRES  
NAME OF STREAM OR WATERS QUADRANGLE NW NW  
OPERATOR J. J. FAGAN ET AL MAP MUSKEGON CO. & LAKETON TWP.

100 Feet from North Line of Farm  
" " East " " "  
" " South " " "  
100 " " West " " "  
100 Feet from North Line of Section  
" " East " " "  
" " South " " "  
100 " " West " " "

- LEGEND**
- |                  |                      |
|------------------|----------------------|
| ○ LOCATION       | ⊕ DRY HOLE           |
| ⊙ RIG            | ⊕ DRY SHOWING OIL    |
| ⊕ DRILLING       | ⊕ DRY SHOWING GAS    |
| ⊕ GAS WELL       | ⊕ ABANDONED LOCATION |
| ● OIL WELL       | ⊕ ABANDONED GAS WELL |
| ⊕ SMALL OIL WELL | ⊕ ABANDONED OIL WELL |

NOTE: Below make tracing from map, (when no map is obtainable make sketch) showing farm, center of section, this location with measurements and also wells, dry holes, or other locations in the vicinity of this location. Make copy to keep for reference and send original to Columbus office.



REMARKS:

SIGNED

Superintendent or Foreman.



DATE <u>May 18th, 1929.</u>		Michigan Producing DIVISION		No. <u>-322-</u>	
STATE <u>Michigan</u>	COUNTY <u>Muskegon</u>	DIST. TWP. <u>Laketon</u>	SEC. <u>13</u>	TOWN <u>10 N</u>	RANGE <u>18 W</u>
WELL No. <u>1</u> (SERIAL No. <u>322</u> )		FARM <u>C. Clowar</u>		ACRES	
NAME OF STREAM OR WATERS				QUADRANGLE	
OPERATOR <u>Witt-Nelson</u>		MAP			
LOCATION REPORT SENT IN (DATE) <u>4/3/29</u>					

WELL STARTED (DATE) April 1929. WELL COMPLETED (DATE) May 18th, 1929.

OIL WELL	<del>GAS WELL</del>	<del>DRY HOLE</del>	<del>ABANDONED WELL</del>
----------	---------------------	---------------------	---------------------------

**CROSS OUT THREE OF THE ABOVE  
WELL RECORD**

DATE OF SHOT				NUMBER OF QUARTS			
1st 24 HOURS PRODUCTION				150			
2nd	"	"	"	BARRELS OR FEET			
3rd	"	"	"				
4th	"	"	"				
5th	"	"	"				

## SAND AND CASING

[illegible][illegible]